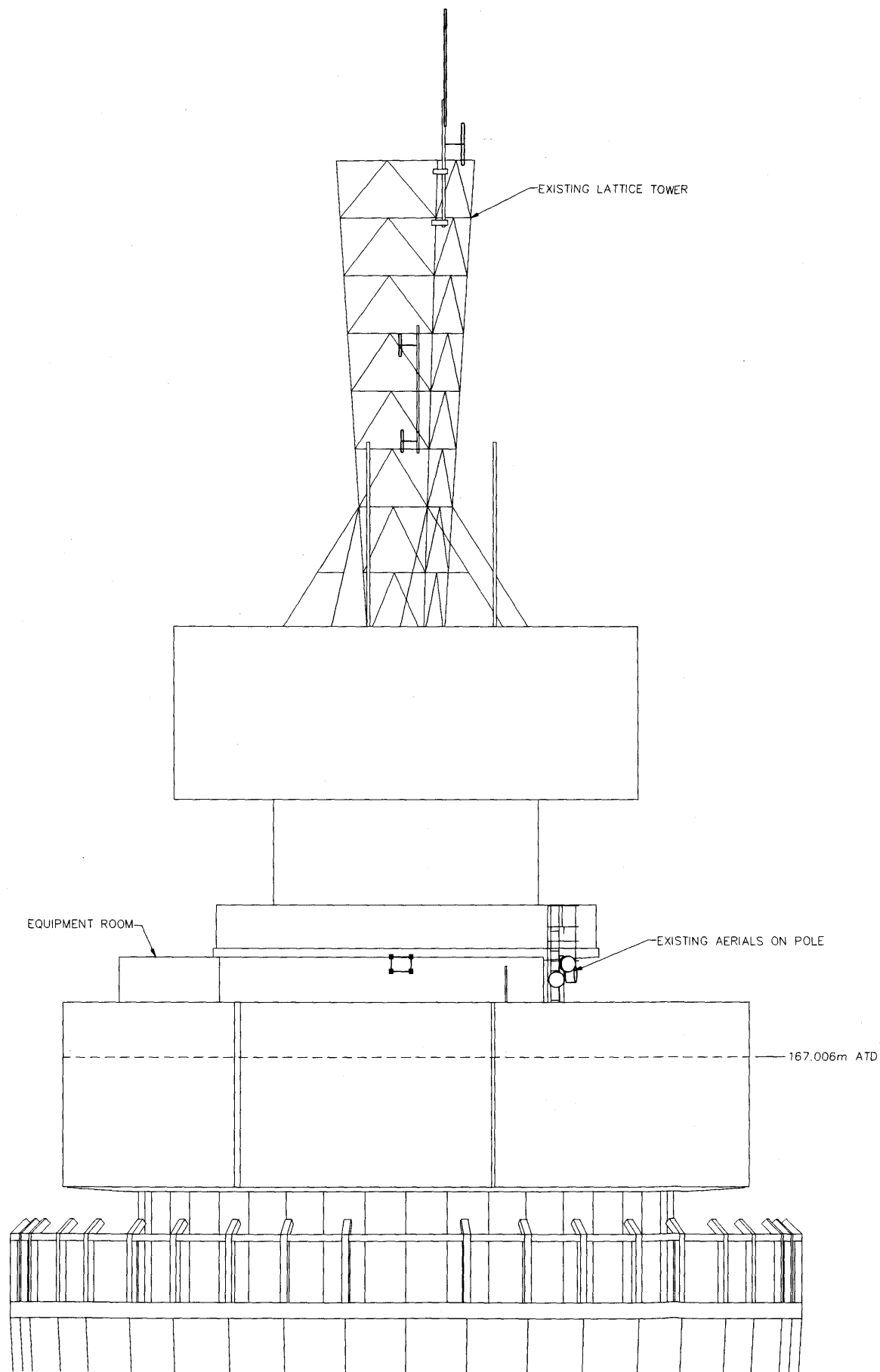


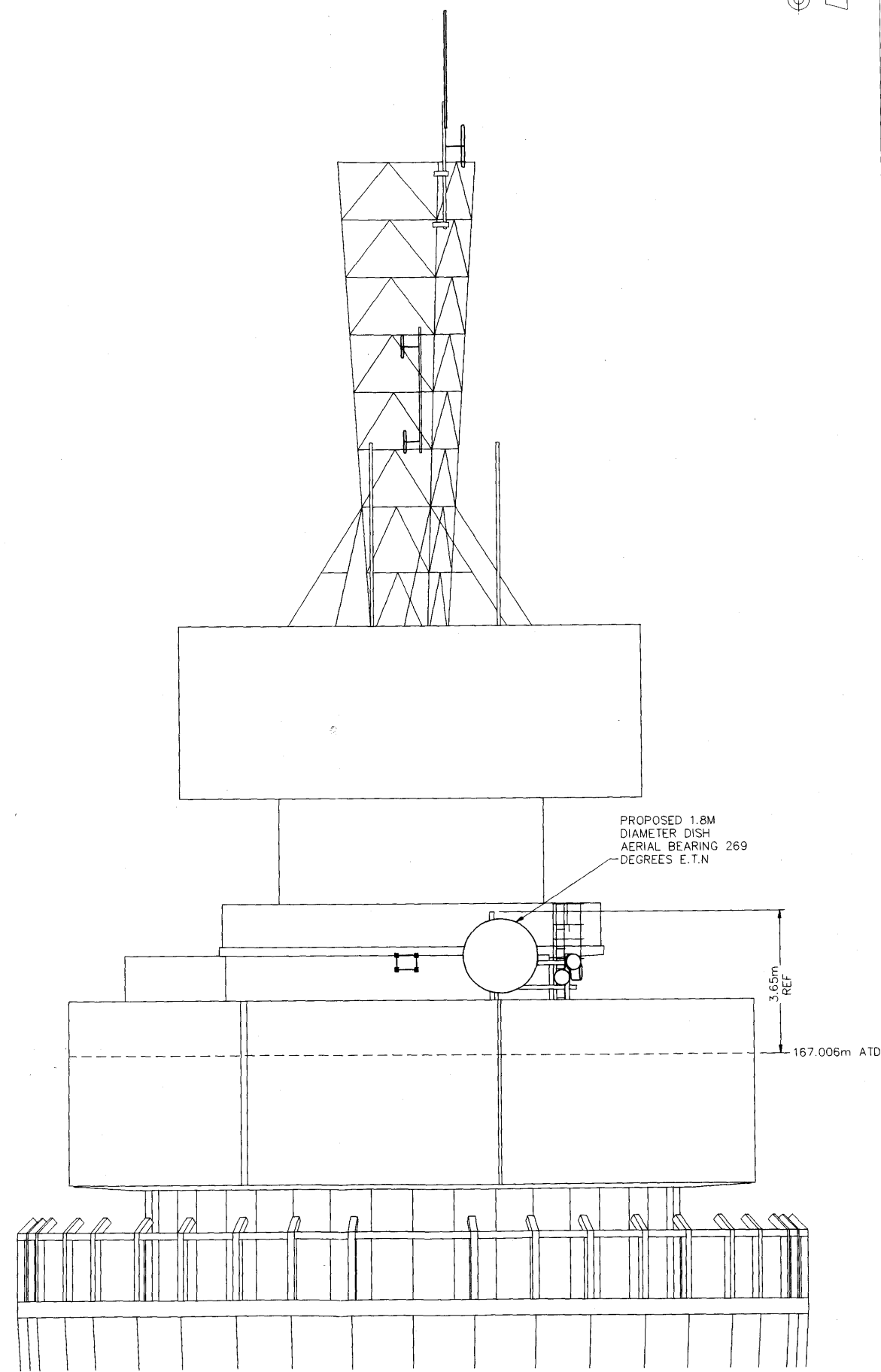
ELEVATION VIEW OF TOWER
FACING WEST

SCALE 1:300



ENLARGED PART ELEVATION VIEW OF TOWER FACING WEST AT
167.006m ATD
SHOWING EXISTING AERIALS

SCALE 1:50



ENLARGED PART ELEVATION VIEW OF TOWER FACING WEST AT
167.006m ATD
SHOWING PROPOSED AERIALS

SCALE 1:50

DRN S.A.D	ANY MODIFICATION TO THE DRAWING OR THE USE OF ALTERNATIVE ITEMS TO THOSE SPECIFIED MUST BE AGREED WITH THE DESIGNER.
CKD MCR	
CERTIFICATION	
DESIGNER	
INCR	
CLIENT	
D.MAIDLOW	
DATE 15/11/11	

DIMENSIONS IN mm UNLESS OTHERWISE STATED		© British Telecommunications plc 2011		DO NOT SCALE ORIGINAL SCALE AS SHOWN	
MATERIAL	SCALES CHANGED AND LARGER DRAWING BLANK ADDED. EXISTING VIEW ADDED.	LONDON TELECOM TOWER		REFERENCES	
FINISH		PROPOSAL FOR			
		3X 1.8M DIAMETER DISH AERIALS			
		& 2X 0.6M DIAMETER DISH AERIALS AT 167M LEVEL			
S.A.D	09/12/11	BT OPERATE	ABEG	WL 4004195	SHT 03 OF 04
AMENDMENT					