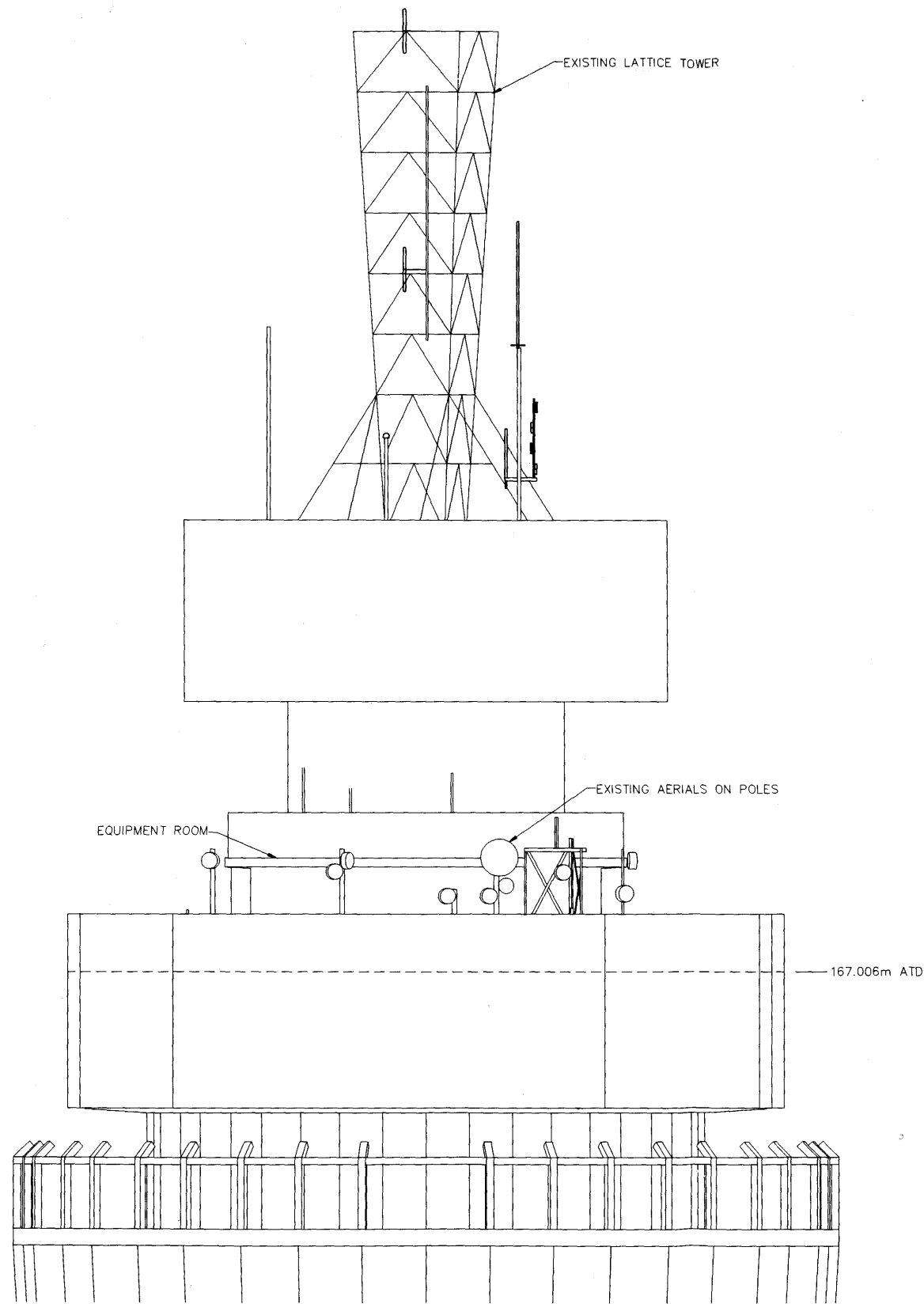
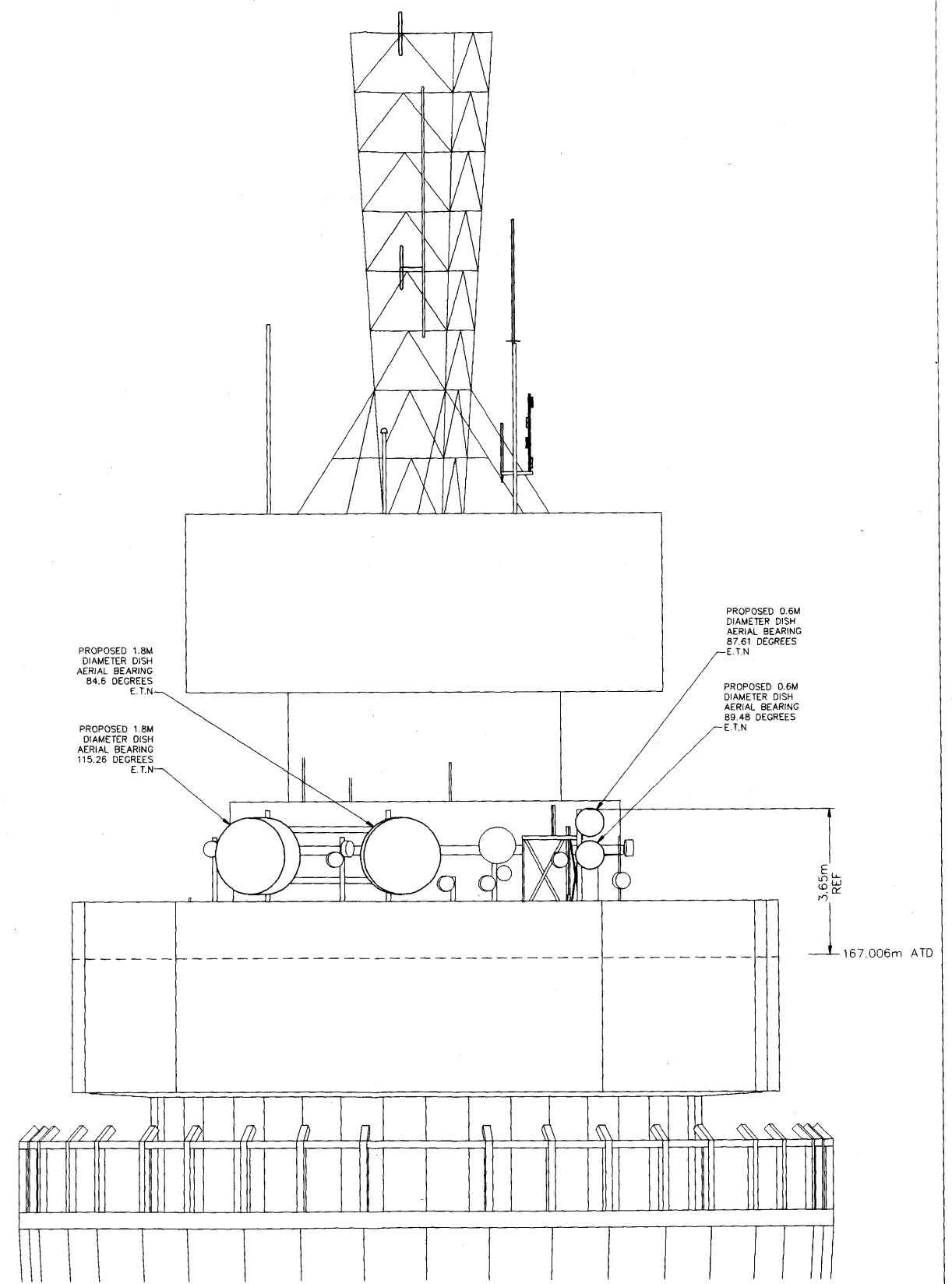


ELEVATION VIEW OF TOWER
FACING EAST
SCALE 1:300



ENLARGED PART ELEVATION VIEW OF TOWER FACING EAST AT
167.006m ATD
SHOWING EXISTING AERIALS
SCALE 1:50



ENLARGED PART ELEVATION VIEW OF TOWER FACING EAST AT
167.006m ATD
SHOWING PROPOSED AERIALS
SCALE 1:50

DRN S.A.D	ANY MODIFICATION TO THE DRAWING OR THE USE OF ALTERNATIVE ITEMS TO THOSE SPECIFIED MUST BE AGREED WITH THE DESIGNER.
CKD IMCR	
CERTIFICATION	
DESIGNER	
IMCR	
CLIENT	
D.MADLOW	
DATE 15/11/11	

DIMENSIONS IN mm UNLESS OTHERWISE STATED		© British Telecommunications plc 2011		DO NOT SCALE ORIGINAL SCALE AS SHOWN	
MATERIAL	SCALES CHANGED AND LARGER DRAWING BLANK ADDED. EXISTING VIEW ADDED.	B	LONDON TELECOM TOWER PROPOSAL FOR 3X 1.8M DIAMETER DISH AERIALS & 2X 0.6M DIAMETER DISH AERIALS AT 167M LEVEL		REFERENCES
FINISH					
S.A.D	09/12/11	BT OPERATE	ABEG	WI 4004195	SHT 04 OF 04