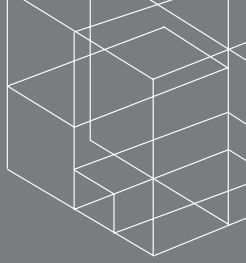


Create your space



SPACE
GLASS

Infinity Glaze Door Systems



Just Sheer Glass Panels - Infinity Glaze Door Systems combines leading innovations in design and technology, to achieve the only frameless door system on the market today and only available through **Space Glass**.

The Slimmest, Finest Lines

Minimum sight lines – only 14mm: Infinity Glaze sliding doors have been designed in response to architect's needs for uninterrupted views, contemporary design, practicality and attention to detail. And the quality of the finished product has far exceeds our client's expectations.

Maximum impact – just sheer glass: We are the only company that manufactures all its components in-house, from our own specially design wheels to the large format glazed units. This enables us to exceed all British and European standards and provide an **insurance guarantee** for all our clients.



Unique Design Features

Patented Infinity Glaze door system includes:

- **Gliding wheel system** – Infinity Glaze doors incorporate a series of rolling wheels held behind a unique resin-coated section. Each wheel can withstand one tonne in weight, so even the largest doors slide effortlessly.
- **Handles integrated into glass** – a choice of stainless steel or powder-coated handles are fitted directly through the glazed unit.
- **14mm sight lines** – where the frame meets the fixed pane, providing the finest sight lines on a sliding doors system available, with no base frame or visible framework.
- **Fully weather-tested** – the Infinity Glaze Door holds the highest weather testing certification - wind and water tested to 1200 pascals - exceeding British and European standards.
- **Largest Format Glazing** – with maximum sliding leaf size of 3m x 6m with a 32mm cavity.
- **Maximum Security** – we use a 6 lever anti-bump cylinder incorporated onto a hook-latch locking system to prevent 'lifting'



Outside space



Adding an outdoor glass room to your home, means you can make the most of your garden space all year round. It will add value to your home and it will provide a great space for dining, entertaining or relaxing in the garden.

Glass Specification

Our double and triple glazed units and door sets are EN7912 registered and comply with all European standards. They achieve an unrivalled U-value of 0.5Wm2k to 1.4Wm2k, depending on the glass specification.

Standard door specification:

- 10mm toughened outer pane
- 32mm argon-filled cavity
- 6mm toughened low-e internal pane

Standard fixed-screen specification:

- 10mm toughened outer pane
- 18mm argon-filled cavity
- 6mm toughened low-e internal pane



A wide range of low-e glasses are available, featuring the latest coatings for maximum thermal insulation and reduction in thermal gain.

Sliding door options are available in bi-parting and tri-sliding combinations.

Frameless doors are also available which incorporate a unique side-hung system, fixing into a multi-locking slim-line aluminium frame.

Slim-line opening roof vent systems are also available.



www.spaceglass.co.uk



Outside space

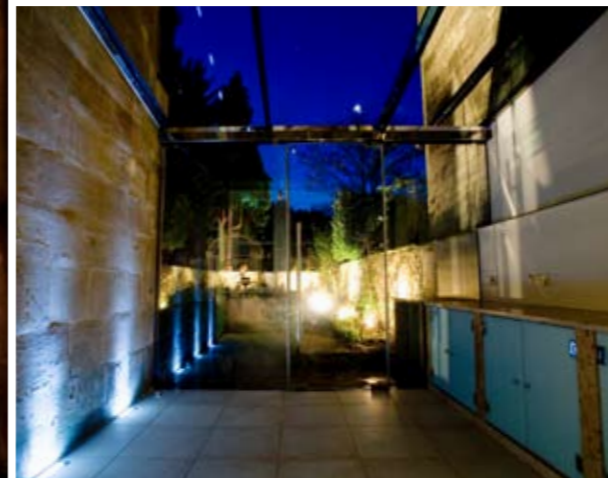


Glass structures with minimal frames and maximum sight-lines create a unique and contemporary feel to a property. And the impact is even more stunning with the use of large format glazing with uninterrupted walls of glass.

Specialist glass manufacturing

Space Glass has invested in its own large format glass manufacturing line, which enables us to supply competitively priced over-sized units featuring the latest technologies in structural glazing:

- Warm-edge spacer bars • Argon gas filled units
- Any glass specification, maximum unit size: 6m x3m
- Multi-laminated, extra toughened glass • Bolt through double-glazed units
- Coloured glass • Units manufactured to the latest European standards
- Integrated 'Pellini' blind systems



We are happy to provide structural glazing on a supply only basis for both commercial and private applications.

If you would like us to provide glass units or laminated glass, please call **01249 700 260** with your glass specifications for a quotation.



www.spaceglass.co.uk



Inside space



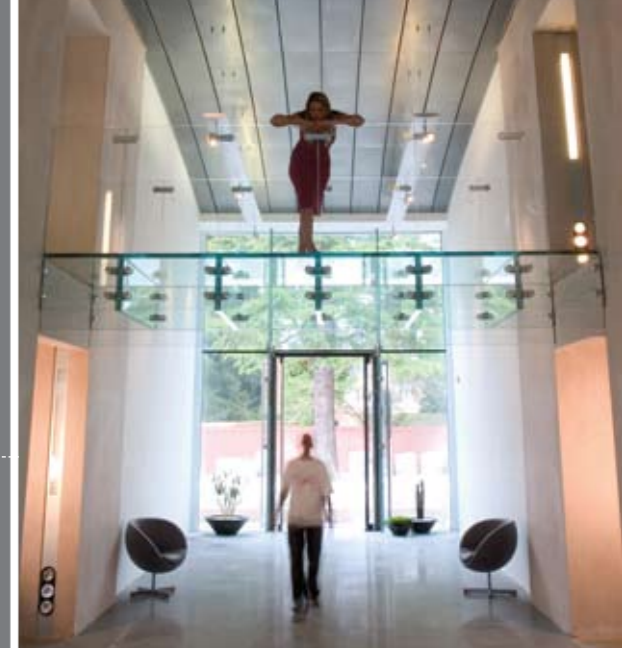
"A contemporary space is a light and bright space. Glass is a key component, enhancing our homes and lifestyles."

Andrew Vince

Inspiration in glass

Space Glass specialises in unique and contemporary glass for private, leisure and commercial applications. We have over 14 years experience and knowledge, working closely with architects and private clients to develop sophisticated designs from initial concepts to final implementation.

We're experts in developing innovative solutions in structural glass and the finished product is always inspirational.



At the heart of every project are precision, functionality and exceptional quality.

Whether it's a frameless glass door system, bridge, staircase, wall or complete glass structure, we design, professionally project manage, manufacture and and oversee all fitting work. All glass and steel components are designed and manufactured to suit each individual project, so they work perfectly within your space.

Make the most of your space, with the latest innovations in glass.

For more details call **01249 700 260** or visit our website.

www.spaceglass.co.uk



Inside space



Every project is individual and requires a flexible approach.

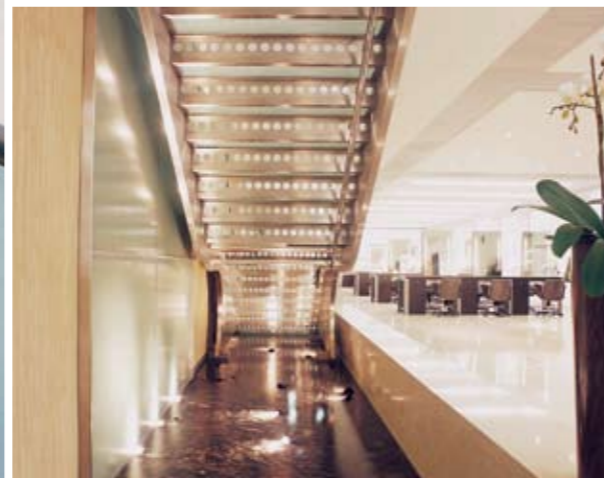
We offer a full design service which includes 3-dimensional designs, to help you visualise your dreams.

Design consultation, drawings and specifications

We can provide architectural drawings, structural calculations, component details and specifications, and also advise you on planning requirements and building regulations.

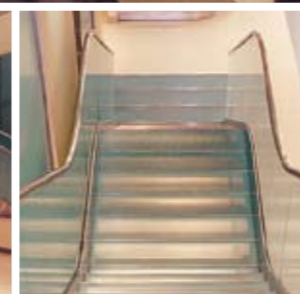
Site surveys enable us to fully discuss your requirements and the options available.

We can offer a wide range of colours, finishes and innovative technical solutions, to enhance your space.

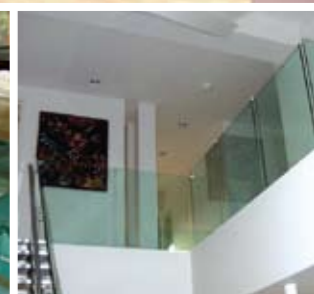


The choice is yours

We work with clients and architects to help develop ideas, and advise on the most suitable design and construction for your project; we're also happy to work with plans provided.



www.spaceglass.co.uk



Contemporary space



We help clients realise their vision in creating a unique and contemporary space that works in harmony with its surrounds. We combine practicality with award-winning solutions that exceed our client's expectations.

Manufacture and installation

Space Glass designs and manufactures all of the components required for every project. We cut, drill, toughen and laminate the glass, as well as make our own silicone-sealed double glazed units. All our steel and aluminium work is unique to the project, and because we make it ourselves, you can choose from a wide variety of finishes, for example polished or brushed stainless steel, powder-coated aluminium to any colour, sliding and folding door systems. This means every detail of every project is custom-made, so you get exactly what you want without the wait.



Make the most of your space with the latest innovations in glass.

To discuss your project, call **01249 700 260** or e-mail **info@spaceglass.co.uk**



www.spaceglass.co.uk



SPACE GLASS



Head office:

Space Glass Ltd
Harthan Park
Corsham
Wiltshire
SN13 0RP

Tel: 01249 700 260

Fax: 01249 700 266

E info@spaceglass.co.uk

W www.spaceglass.co.uk