

PREMIER IN-LINE™ TILE & SLATE VENTILATORS

Specification clauses

Ventilation of roof space

Provide low level/high level roof space ventilation by means of Glidevale Premier In-Line Tile/Slate Ventilators with integral 4mm large insect screen, and AA fire rating to BS 476: Part 3: 2004.

Size/profile _____, colour _____ (matched to the roof covering), and to be installed complete with Glidevale Underlay Opening Protectors. Install at _____ m centres as shown on drawings to provide ventilation area equivalent to _____mm²/m in accordance with Building Regulations Approved Document C2 2004 and BS 5250: 2002/2005. Fix in accordance with manufacturer's instructions.

SVP/mechanical extract terminals

Soil vent pipe stacks/mechanical extract ducts to be terminated at the roof slope by means of Glidevale Premier In-Line Tile/Slate Ventilators with integral 4mm large insect screen, and AA fire rating to BS 476: Part 3: 2004. Size/profile _____, colour _____ (matched to the roof covering), and to be installed with Glidevale Underlay Opening Protector, Soil Universal Adaptor and Flexible Pipe. Install where shown on drawings and fix in accordance with manufacturer's instructions. All joints and connections to be airtight in accordance with Building Regulations Approved Document H 2002, and all pipes and ducts in the roof space to be insulated.

Appearance

Premier In-Line™ Tile and Slate Ventilators are available for use with the roof tile manufacturers' profiles listed on page 31, colour-matched to any of the standard colours for that tile. Other profiles available on request.

Tile ventilators have silica sand entrained in the polymeric resin surface to help them to weather more closely with the surrounding tiles over time. Slate ventilators have a smooth surface.

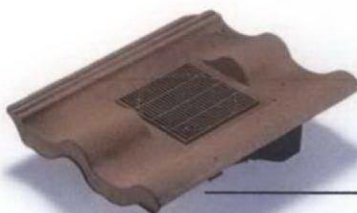
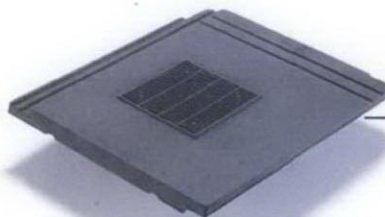
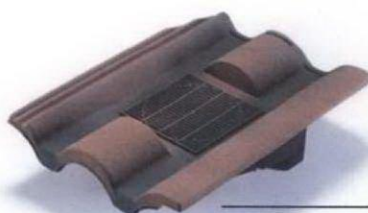
Examples of ventilators, with tiles/slates for which they are designed to be compatible



Redland Mini Stonewold and Stonewold Mk II tiles



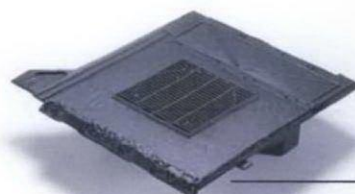
Redland Regent tiles



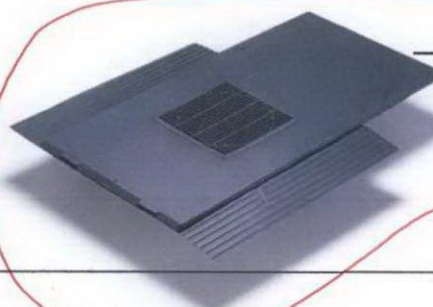
Plain tiles



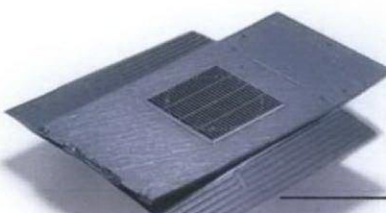
Marley Mendip Double Pantiles



600 x 300mm slate



Redland Cambrian slate



Redland 50/Double Roman tiles



500 x 250mm slate