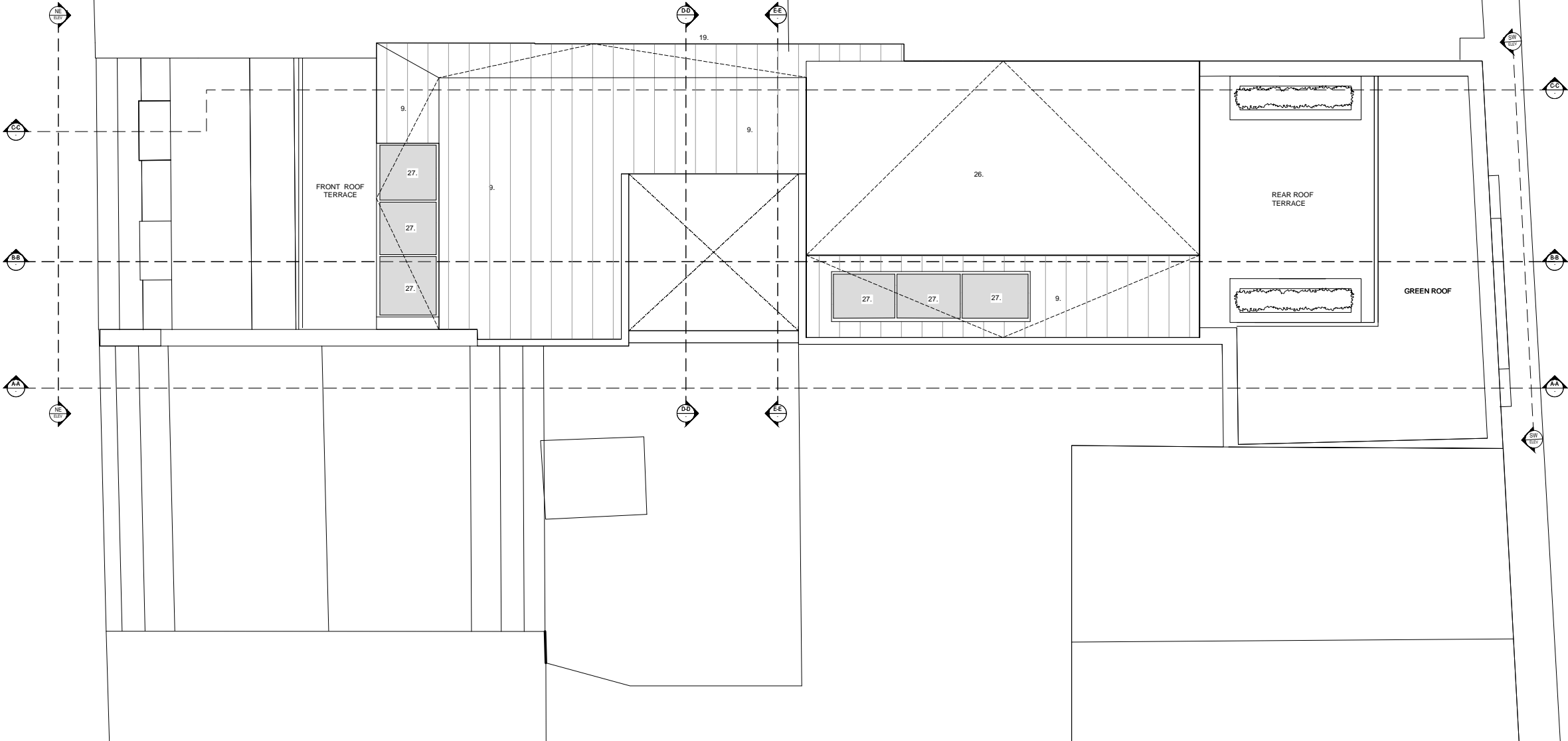




ROOF PLAN - OPTION C - Variant Roof  
SCALE 1 : 100

0.0 1.0 2.0 3.0 4.0 5.0m



GA COMPUTER FILE

NOTES

- LEGEND
- DENOTES EXISTING STRUCTURE RETAINED
  - DENOTES NEW WALL / PARTITION CONSTRUCTION
  - DENOTES EXISTING STRUCTURE REMOVED
  - DENOTES NEW BEAM OVERHEAD
  - DENOTES OUTLINE OF STRUCTURE OVERHEAD
  - DENOTES LINE OF POTENTIAL OVERHEAD HOIST
- EXTERNAL WALL WITH DARK BLUE ENGINEERING BRICK FINISH
  - EXTERNAL WALL WITH WHITE PAINTED BRICK WORK FINISH
  - POWDER COATED ALUMINIUM WINDOW
  - TIMBER CLAD COMMUNAL ENTRANCE DOOR & SIDE PANEL
  - EXTERNAL WALL WITH VERTICAL BRICK WORK FINISH
  - NEW EXTERNAL IRON BALUSTRADE (MINIMUM 100mm ABOVE FINISHED FLOOR LEVEL)
  - LANDSCAPE PLANTERS WITH RENDEZ FINISH
  - EXTERNAL WALL WITH HORIZONTAL TIMBER CLADDING
  - NEW FLAT PITCHED ROOF WITH ZINC CLADDING
  - NEW ALUMINIUM CLAD BAY WINDOW AND FEATURE BAND
  - NEW STAIRWELL
  - GREEN ROOF CONSTRUCTION
  - PARAPET WALL / ROOF DETAIL WITH STONE CAPPING
  - NEW TIMBER DECKING
  - OBSCURED GLAZING
  - NEW FULL HEIGHT POWDER COATED ALUMINIUM GLAZING PANEL
  - NEW LIFT SHAFT POSITION
  - NEW INDIVIDUAL DWELLING ENTRANCE DOOR
  - ZINC CLAD EXTERNAL WALL CONSTRUCTION
  - NEW POWDER COATED ALUMINIUM GLAZED PANEL SET FLUSH WITH EXTERNAL WALL SURFACE
  - NEW 81 FOLD BIN STORE DOOR TO MATCH BRICK WORK
  - EXTERNAL WALL WITH YELLOW LONDON STOCK BRICK FINISH TO MATCH NEIGHBOURING PROPERTIES
  - NEW POWDER COATED ALUMINIUM TOP HUNG DOUBLE GLAZED WINDOW WITH RESTRICTED OPENING TO MAX. 250mm
  - NEW SLATTED ANGLE TIMBER FENCE TO PREVENT OVERLOOKING MINIMUM 1800mm ABOVE FINISHED FLOOR LEVEL
  - NEW SET-BACK ZINC COVERED WALL TO MATCH ROOF
  - P.V. SOLAR PANELS FIXED TO SOUTH FACING SLOPED ROOF
  - POWDER COATED ALUMINIUM ROOFLIGHT

J	10.01.2012	Roof lights and Solar Panels added
I	21.12.2011	Pitched roof to rear with four bed flat option
H	01.12.2011	4th Floor accommodation added
G	04.07.2011	Green roof note added following case officer comments
F	14.04.2011	Amendments as requested in planning officer email 08.04.2011
E	15.03.2011	Amendments to brick finish, fenestration and fencing following comments from Council
D	09.12.2010	Amendments prior to submission to Camden Borough Council
C	30.11.2010	Bay windows amended following comments from comments from Highways Dept. 30.11.2010
B	17.11.2010	Amendments following client comments 17.11.2010
A	15.11.2010	Amendments following client telephone conversation 15.11.2010

REV	DATE	DESCRIPTION
-----	------	-------------

DRAWING ISSUE

Approval

CLIENT

Lear House Properties

GRESFORD  
ARCHITECTS

Unit C1  
3 Bradbury St  
London  
N16 8JN

t: +44 (0) 20 7249 1855  
e: info@gresfordarchitects.co.uk  
f: +44 (0) 7812 9470

PROJECT TITLE

61 Grays Inn Road  
London  
WC1

DRAWING TITLE

Third Floor Plan  
PROPOSED

SCALE	DRAWN
1/100@A3	JMA
DATE	CHECKED
October 2010	-
DWG NO.	REVISION
459-108	J