

# 00. INDEX

Drawing Number	Drawing Title	Description
B04114/00	Index	Index of Drawings.
B04114/01	Location Plan	Scale 1:1250 at A4
B04114/02	Roof Plan	Drawing of block from above, showing equipment positions.
B04114/03	Roof Elevations	Roof view, cable routes and equipments mounting and measurements
B04114/04	South Elevation 1	Elevation view, cable routes, colour, loom sizes at entry point per flat
B04114/05	South Elevations 2	Elevation view, cable routes, colour, loom sizes at entry point per flat
B04114/06	South Elevation 3	Elevation view, cable routes, colour, loom sizes at entry point per flat
B04114/07	Existing Equipment	Elevation view, cable routes, colour, loom sizes at entry point per flat
B04114/08	Antenna, Dish Sizes & Typical Mounting Heights	Measurement of Dishes mounting position / height.

Form No. SCC 013 SCC International – 1 Fieldings Road, Cheshunt, Herts, EN8 9TL, . Tel: 01992 642255. Website: www.scci.co.uk



Please consider the environment before printing this document – Recycle Wherever Possible



Site Reference:	B04114/00	Site Address:	FLATS 126-152 HOLLY LODGE MANSIONS, CAMDEN LONDON N6 6DR		
Date:	11/01/2012	Client:	LBC0741.0	Surveyed By:	G. Henebery
Number of Points:	14	System Type	9WIRE IRS SKY+	Drawn By:	W. Kisala



Each property will have two cables to lounge position.

#### Cable Harness sizes

2-4 cables = 15mm

6-8 cables = 20mm

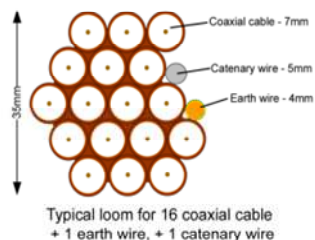
10-14 cables = 30mm

16-18 Cables = 35mm

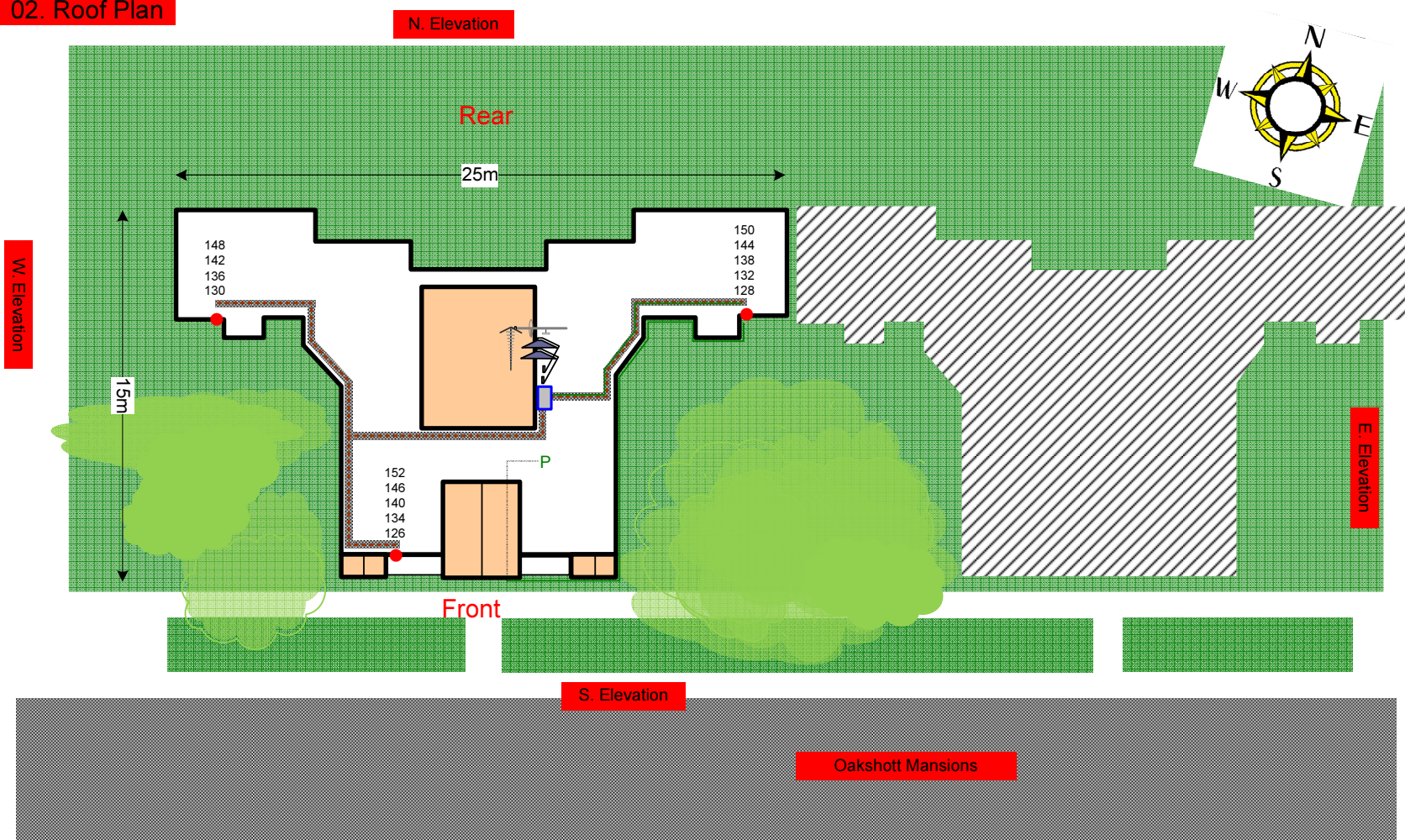
20 cables = 40mm

40 cables = 65mm

60 cables = 90mm



## 02. Roof Plan



Rig, Dishes and H/E all located on roof sidewall of the tank room, Power is located in the hallway entrance to flats, All cables to run on tray on roof. Drop cables to run over the edge of the block then down to all lounge locations at the front and sides of the block. Only black cables to be used onsite.

Form No. SCC 013 SCC International – 1 Fieldings Road, Cheshunt, Herts, EN8 9TL, . Tel: 01992 642255. Website: www.scci.co.uk

Site Reference:	B04114/02	Site Address:	FLATS 126-152 HOLLY LODGE MANSIONS, CAMDEN LONDON N6 6DR
Date:	11/01/2012	Client:	LBC0741.0
Number of Points:	14	System Type:	9WIRE IRS SKY+
		Surveyed By:	G. Henebery
		Drawn By:	W. Kisala

Please consider the environment before printing this document – Recycle Wherever Possible



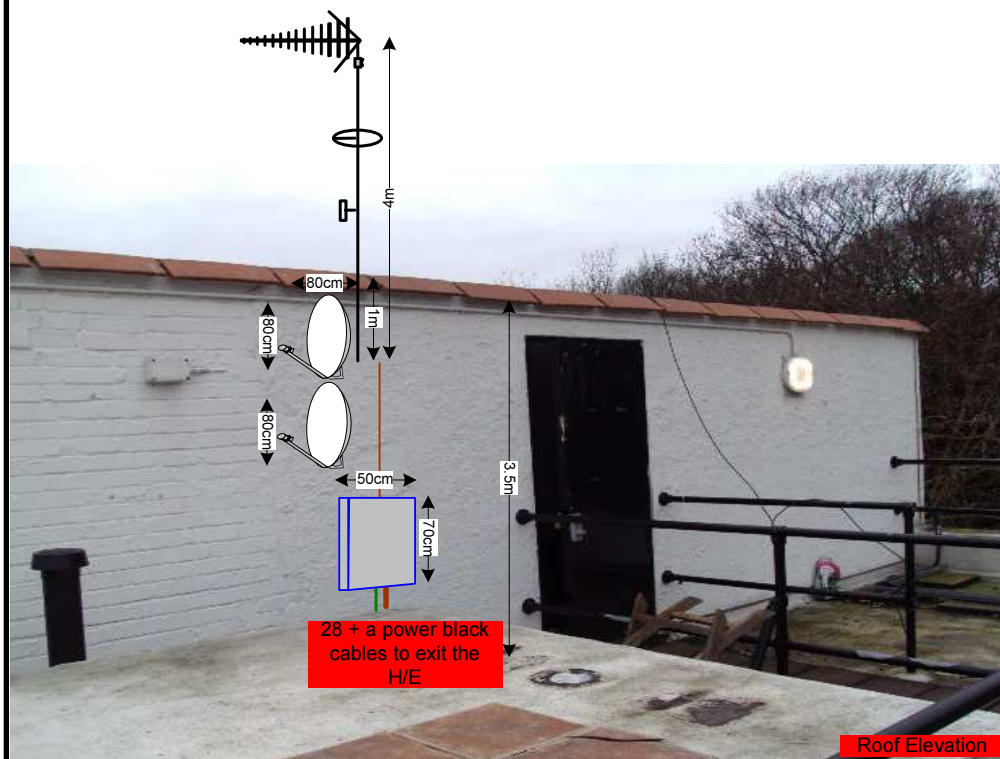
### 03. Roof Elevations

Location of the 4m antenna and 80cm dishes all mounted on the sidewall of the tank room on roof

Roof Elevation



Black cables to exit the H/E then run secured on tray on roof then down on cat wire on the face and sides of the building to all tv points



Roof Elevation

Form No. SCC 013 SCC International – 1 Fieldings Road, Cheshunt, Herts, EN8 9TL, . Tel: 01992 642255. Website: www.scci.co.uk



Please consider the environment before printing this document – Recycle Wherever Possible



Site Reference:	B04114/03	Site Address:	FLATS 126-152 HOLLY LODGE MANSIONS, CAMDEN LONDON N6 6DR
Date:	11/01/2012	Client:	LBC0741.0
Number of Points:	14	System Type:	9WIRE IRS SKY+
		Surveyed By:	G. Henebery
		Drawn By:	W. Kisala



Each property will have two cables to lounge position.

#### Cable Harness sizes

2-4 cables = 15mm

6-8 cables = 20mm

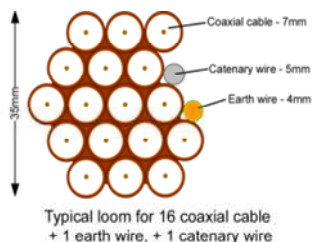
10-14 cables = 30mm

16-18 Cables = 35mm

20 cables = 40mm

40 cables = 65mm

60 cables = 90mm



#### 04. South Elevation 1

Black cables to drop at the front face of the block then clipped to the wall to then feed flats with 2 cables each at entry point



Form No. SCC 013 SCC International – 1 Fieldings Road, Cheshunt, Herts, EN8 9TL, . Tel: 01992 642255. Website: www.scci.co.uk



Please consider the environment before printing this document – Recycle Wherever Possible



Site Reference:	B04114/04	Site Address:	FLATS 126-152 HOLLY LODGE MANSIONS, CAMDEN LONDON N6 6DR
Date:	11/01/2012	Client:	LBC0741.0
Number of Points:	14	System Type:	9WIRE IRS SKY+
		Surveyed By:	G. Henebery
		Drawn By:	W. Kisala



Each property will have two cables to lounge position.

#### Cable Harness sizes

2-4 cables = 15mm

6-8 cables = 20mm

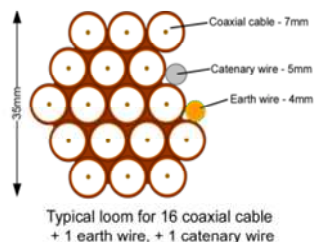
10-14 cables = 30mm

16-18 Cables = 35mm

20 cables = 40mm

40 cables = 65mm

60 cables = 90mm



#### 05. South Elevations 2



Black cables to drop at the front and sides face of the block then clipped to the wall to then feed flats with 2 cables each at entry point



Form No. SCC 013 SCC International – 1 Fieldings Road, Cheshunt, Herts, EN8 9TL, . Tel: 01992 642255. Website: www.scc.co.uk



Please consider the environment before printing this document – Recycle Wherever Possible



Site Reference:	B04114/05	Site Address:	FLATS 126-152 HOLLY LODGE MANSIONS, CAMDEN LONDON N6 6DR
Date:	11/01/2012	Client:	LBC0741.0
Number of Points:	14	System Type:	9WIRE IRS SKY+
		Surveyed By:	G. Henebery
		Drawn By:	W. Kisala



Each property will have two cables to lounge position.

#### Cable Harness sizes

2-4 cables = 15mm

6-8 cables = 20mm

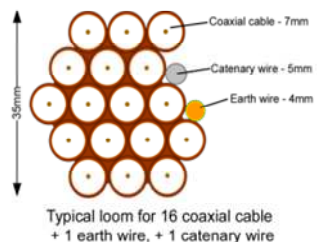
10-14 cables = 30mm

16-18 Cables = 35mm

20 cables = 40mm

40 cables = 65mm

60 cables = 90mm



### 06. South Elevation 3



-3 drops on this elevation  
-Black cables to drop at the front and sides face of the block then clipped to the wall to then feed flats with 2 cables each at entry point.

Form No. SCC 013 SCC International – 1 Fieldings Road, Cheshunt, Herts, EN8 9TL, . Tel: 01992 642255. Website: www.scci.co.uk



Please consider the environment before printing this document – Recycle Wherever Possible

Site Reference:	B04114/06	Site Address:	FLATS 126-152 HOLLY LODGE MANSIONS, CAMDEN LONDON N6 6DR
Date:	11/01/2012	Client:	LBC0741.0
Number of Points:	14	System Type:	9WIRE IRS SKY+
		Drawn By:	W. Kisala
		Surveyed By:	G. Henebery



Each property will have two cables to lounge position.

#### Cable Harness sizes

2-4 cables = 15mm

6-8 cables = 20mm

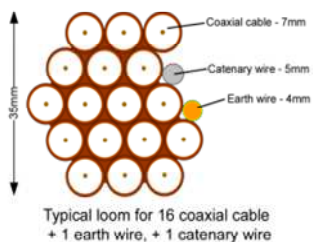
10-14 cables = 30mm

16-18 Cables = 35mm

20 cables = 40mm

40 cables = 65mm

60 cables = 90mm



#### 07. Existing Equipments



Roof Elevation



Roof Elevation

Form No. SCC 013 SCC International – 1 Fieldings Road, Cheshunt, Herts, EN8 9TL, . Tel: 01992 642255. Website: www.scci.co.uk

Site Reference:	B04114/07	Site Address:	FLATS 126-152 HOLLY LODGE MANSIONS, CAMDEN LONDON N6 6DR		
Date:	11/01/2012	Client:	LBC0741.0	Surveyed By:	G. Henebery
Number of Points:	14	System Type:	9WIRE IRS SKY+	Drawn By:	W. Kisala



Please consider the environment before printing this document – Recycle Wherever Possible



Each property will have two cables to lounge position.

Cable Harness sizes

2-4 cables = 15mm

6-8 cables = 20mm

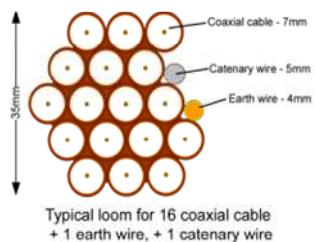
10-14 cables = 30mm

16-18 Cables = 35mm

20 cables = 40mm

40 cables = 65mm

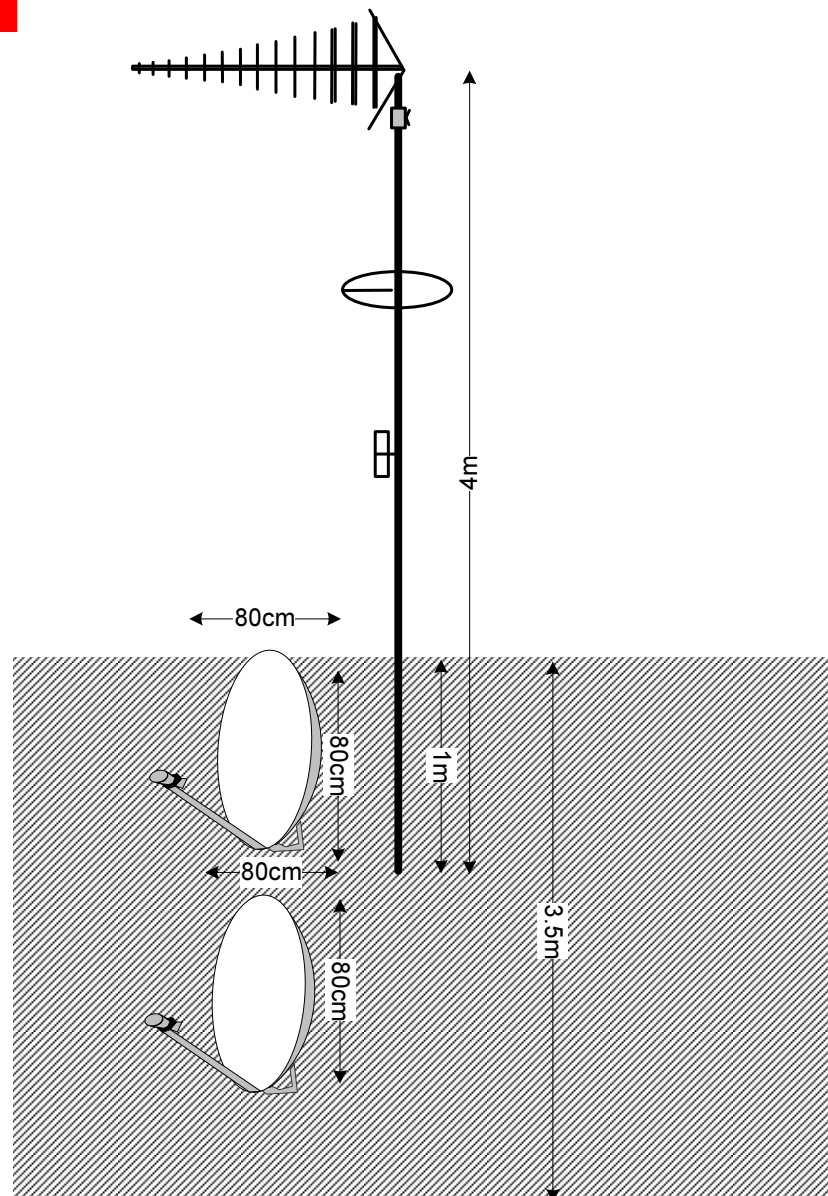
60 cables = 90mm



## 08. Antenna and Dishes Measurements

Location of the 4m antenna and 80cm dishes all mounted on the sidewall of the tank room on roof

Digital TV,  
FM & DAB Radio  
Aerials



Form No. SCC 013 SCC International – 1 Fieldings Road, Cheshunt, Herts, EN8 9TL, . Tel: 01992 642255. Website: www.scci.co.uk

Site Reference:	B04114/08	Site Address:	FLATS 126-152 HOLLY LODGE MANSIONS, CAMDEN LONDON N6 6DR
Date:	11/01/2012	Client:	LBC0741.0
Number of Points:	14	System Type:	9WIRE IRS SKY+
		Surveyed By:	G. Henebery
		Drawn By:	W. Kisala

Please consider the environment before printing this document – Recycle Wherever Possible

