

00. INDEX

Drawing Number	Drawing Title	Description
B04122-23/00	Index	Index of Drawings.
B04122-23/01	Location Plan	Scale 1:1250 at A4
B04122-23/02	Roof Plan	Drawing of block from above, showing equipment positions.
B04122-23/03	Roof Elevations	Roof view, cable routes and equipments mounting and measurements
B04122-23/04	North Elevation 1	Elevation view, cable routes, colour, loom sizes at entry point per flat
B04122-23/05	North Elevation 2	Elevation view, cable routes, colour, loom sizes at entry point per flat
B04122-23/06	South Elevation 1	Elevation view, cable routes, colour, loom sizes at entry point per flat
B04122-23/07	South elevation 2	Elevation view, cable routes, colour, loom sizes at entry point per flat
B04122-23/08	Existing Equipment	Location and description of existing equipment on site before install
B04122-23/09	Antenna, Dish Sizes & Typical Mounting Heights	Measurement of Dishes mounting position / height.

Form No. SCC 013 SCC International – 1 Fieldings Road, Cheshunt, Herts, EN8 9TL, . Tel: 01992 642255. Website: www.scci.co.uk



Please consider the environment before printing this document – Recycle Wherever Possible



Site Reference:	B04122-23/00	Site Address:	FLATS 113-148 MAKEPEACE MANSIONS, CAMDEN LONDON N6 6ER		
Date:	18/11/2011	Client:	LBC0765.0/ 0766.0	Surveyed By:	G. Henebery
Number of Points:	36	System Type	9WIRE IRS SKY+	Drawn By:	W. Kisala



Each property will have two cables to lounge position.

Cable Harness sizes

2-4 cables = 15mm

6-8 cables = 20mm

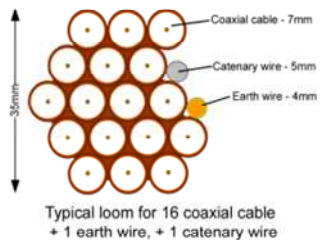
10-14 cables = 30mm

16-18 Cables = 35mm

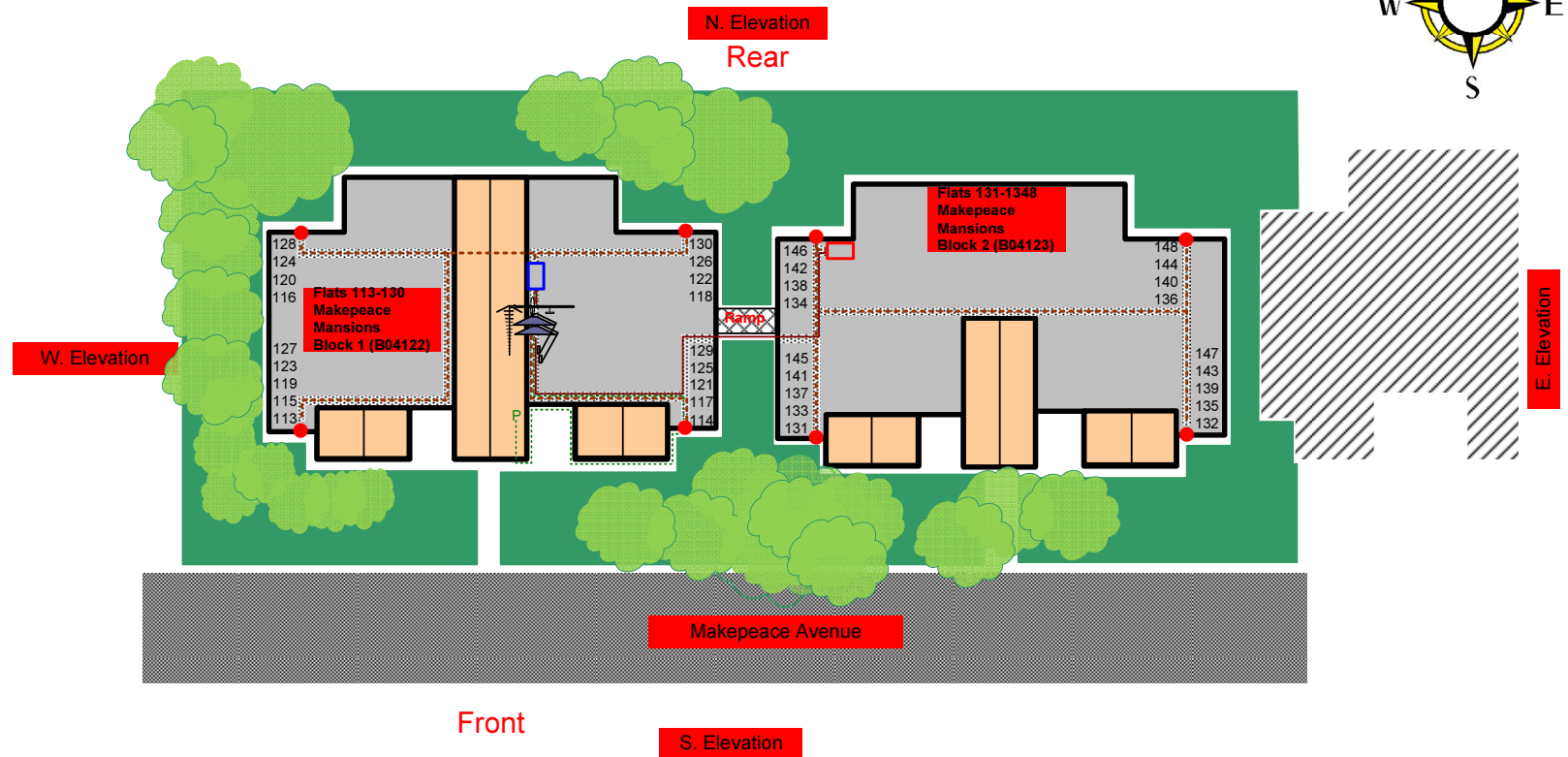
20 cables = 40mm

40 cables = 65mm

60 cables = 90mm



02. Roof Plan



-Rig, Dishes, H/E and R1 all located on roof side of the wall on roof, Power is located in the hallway rear entrance to flats,
-All cables to run on tray on roof. Drop cables to run over the edge of the parapet wall then down to all lounge locations at the front and rear of the block. Both block will be linked by a cat wire side off the ramp side. Note that White cable will be dropped at rear wall of the buildings and Black cables will be dropped at the front face of the buildings

Form No. SCC 013 SCC International – 1 Fieldings Road, Cheshunt, Herts, EN8 9TL, . Tel: 01992 642255. Website: www.scci.co.uk

Site Reference:	B04122-23/02	Site Address:	FLATS 113-148 MAKEPEACE MANSIONS, CAMDEN LONDON N6 6ER		
Date:	18/11/2011	Client:	LBC0765.0/ 0766.0	Surveyed By:	G. Henebery
Number of Points:	36	System Type	9WIRE IRS SKY+	Drawn By:	W. Kisala

Please consider the environment before printing this document – Recycle Wherever Possible

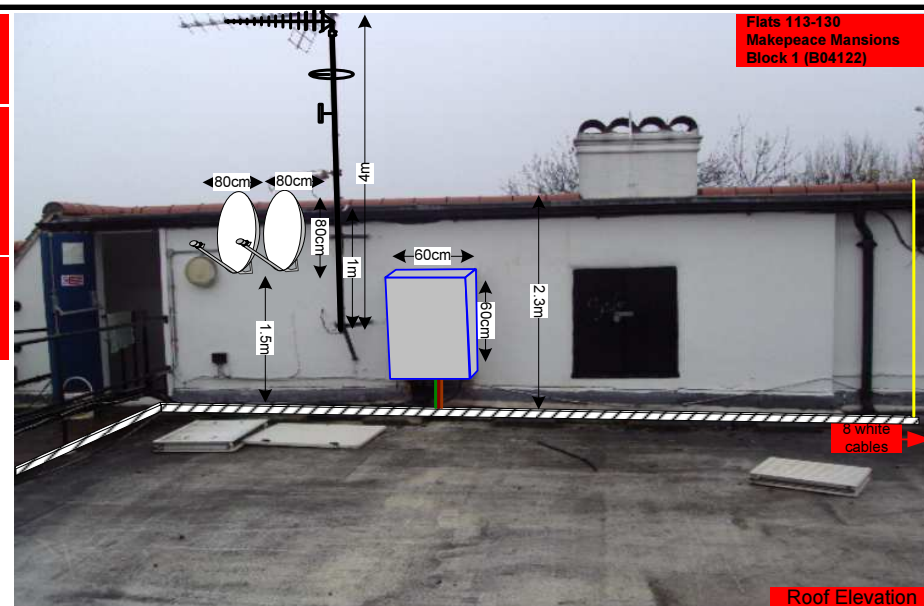


03. Roof Elevation

Location of the 4m Antenna and 80cm dishes on the side of the wall on roof

36 cables to exit the Main cabinet and feed flat at rear and front of the building

Location of the Main cabinet. Sized 60x60cm on the side of the wall on roof



Flats 113-130
Makepeace Mansions
Block 1 (B04122)

8 white cables

Roof Elevation

Roof Elevation

Flats 131-1348
Makepeace Mansions
Block 2 (B04123)



8 white cables

R1

-White cables to run on tray at rear side of the roof then on the side of the ramp on roof then down to lounge points
-Black cables to run from the Main cabinet on roof then secured on tray then to drop at the front face to feed flats.

36 cables to exit the remote cab and feed flat at rear and front of the building

Location of the remote cabinet. Sized 60x60cm on the side of the wall on roof

Form No. SCC 013 SCC International – 1 Fieldings Road, Cheshunt, Herts, EN8 9TL. Tel: 01992 642255. Website: www.scci.co.uk



Please consider the environment before printing this document – Recycle Wherever Possible



Site Reference:	B04122-23/03	Site Address:	FLATS 113-148 MAKEPEACE MANSIONS, CAMDEN LONDON N6 6ER
Date:	18/11/2011	Client:	LBC0765.0/ 0766.0
Number of Points:	36	System Type:	9WIRE IRS SKY+
		Surveyed By:	G. Henebery
		Drawn By:	W. Kisala



Each property will have two cables to lounge position.

Cable Harness sizes

2-4 cables = 15mm

6-8 cables = 20mm

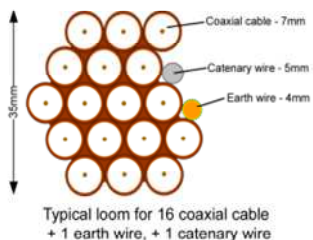
10-14 cables = 30mm

16-18 Cables = 35mm

20 cables = 40mm

40 cables = 65mm

60 cables = 90mm



04. North Elevation 1

Flats 113-130 Makepeace Mansions
Block 1 (B04122)



Black cables to drop at the front face of the block then clipped to the wall to feed flats with 2 cables each at entry point

Form No. SCC 013 SCC International – 1 Fieldings Road, Cheshunt, Herts, EN8 9TL, . Tel: 01992 642255. Website: www.scci.co.uk



Please consider the environment before printing this document – Recycle Wherever Possible

Site Reference:	B04122-23/04	Site Address:	FLATS 113-148 MAKEPEACE MANSIONS, CAMDEN LONDON N6 6ER
Date:	18/11/2011	Client:	LBC0765.0/ 0766.0
Number of Points:	36	System Type:	9WIRE IRS SKY+
		Surveyed By:	G. Henebery
		Drawn By:	W. Kisala



Each property will have two cables to lounge position.

Cable Harness sizes

2-4 cables = 15mm

6-8 cables = 20mm

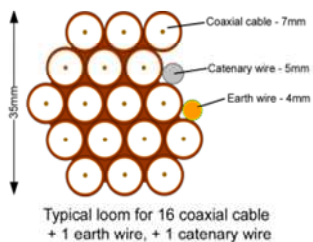
10-14 cables = 30mm

16-18 Cables = 35mm

20 cables = 40mm

40 cables = 65mm

60 cables = 90mm



05. North Elevation 2

Flats 131-1348
Makepeace Mansions
Block 2 (B04123)



Black cables to drop at the front face of the block then clipped to the wall to feed flats with 2 cables each at entry point

Form No. SCC 013 SCC International – 1 Fieldings Road, Cheshunt, Herts, EN8 9TL, . Tel: 01992 642255. Website: www.scci.co.uk



Please consider the environment before printing this document – Recycle Wherever Possible



Site Reference:	B04122-23/05	Site Address:	FLATS 113-148 MAKEPEACE MANSIONS, CAMDEN LONDON N6 6ER		
Date:	18/11/2011	Client:	LBC0765.0/ 0766.0	Surveyed By:	G. Henebery
Number of Points:	36	System Type:	9WIRE IRS SKY+	Drawn By:	W. Kisala



Each property will have two cables to lounge position.

Cable Harness sizes

2-4 cables = 15mm

6-8 cables = 20mm

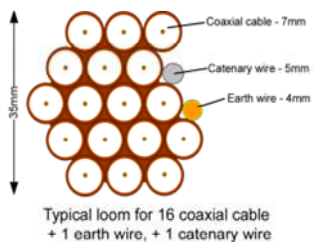
10-14 cables = 30mm

16-18 Cables = 35mm

20 cables = 40mm

40 cables = 65mm

60 cables = 90mm



06. South Elevation 1

Flats 131-1348 Makepeace Mansions
Block 2 (B04123)



White cables to drop at rear face of the block then clipped to the wall to feed flats with 2 cables each at entry point

Form No. SCC 013 SCC International – 1 Fieldings Road, Cheshunt, Herts, EN8 9TL, . Tel: 01992 642255. Website: www.scci.co.uk



Please consider the environment before printing this document – Recycle Wherever Possible



Site Reference:	B04122-23/06	Site Address:	FLATS 113-148 MAKEPEACE MANSIONS, CAMDEN LONDON N6 6ER
Date:	18/11/2011	Client:	LBC0765.0/ 0766.0
Number of Points:	36	System Type:	9WIRE IRS SKY+
		Surveyed By:	G. Henebery
		Drawn By:	W. Kisala



Each property will have two cables to lounge position.

Cable Harness sizes

2-4 cables = 15mm

6-8 cables = 20mm

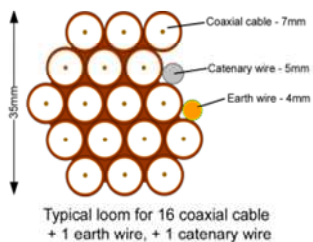
10-14 cables = 30mm

16-18 Cables = 35mm

20 cables = 40mm

40 cables = 65mm

60 cables = 90mm



07. South Elevation 2

Flats 113-130 Makepeace
Mansions
Block 1 (B04122)



White cables to drop at rear face of the block then clipped to the wall to feed flats with 2 cables each at entry point

Form No. SCC 013 SCC International – 1 Fieldings Road, Cheshunt, Herts, EN8 9TL, . Tel: 01992 642255. Website: www.scci.co.uk



Please consider the environment before printing this document – Recycle Wherever Possible



Site Reference:	B04122-23/07	Site Address:	FLATS 113-148 MAKEPEACE MANSIONS, CAMDEN LONDON N6 6ER		
Date:	18/11/2011	Client:	LBC0765.0/ 0766.0	Surveyed By:	G. Henebery
Number of Points:	36	System Type:	9WIRE IRS SKY+	Drawn By:	W. Kisala



Each property will have two cables to lounge position.

Cable Harness sizes

2-4 cables = 15mm

6-8 cables = 20mm

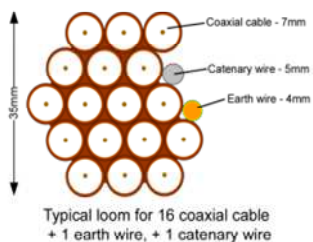
10-14 cables = 30mm

16-18 Cables = 35mm

20 cables = 40mm

40 cables = 65mm

60 cables = 90mm



08. Existing Equipments



Form No. SCC 013 SCC International – 1 Fieldings Road, Cheshunt, Herts, EN8 9TL, . Tel: 01992 642255. Website: www.scci.co.uk



Please consider the environment before printing this document – Recycle Wherever Possible



Site Reference:	B04122-23/08	Site Address:	FLATS 113-148 MAKEPEACE MANSIONS, CAMDEN LONDON N6 6ER
Date:	18/11/2011	Client:	LBC0765.0/ 0766.0
Number of Points:	36	System Type:	9WIRE IRS SKY+
		Surveyed By:	G. Henebery
		Drawn By:	W. Kisala



Each property will have two cables to lounge position.

Cable Harness sizes

2-4 cables = 15mm

6-8 cables = 20mm

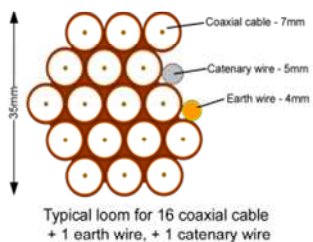
10-14 cables = 30mm

16-18 Cables = 35mm

20 cables = 40mm

40 cables = 65mm

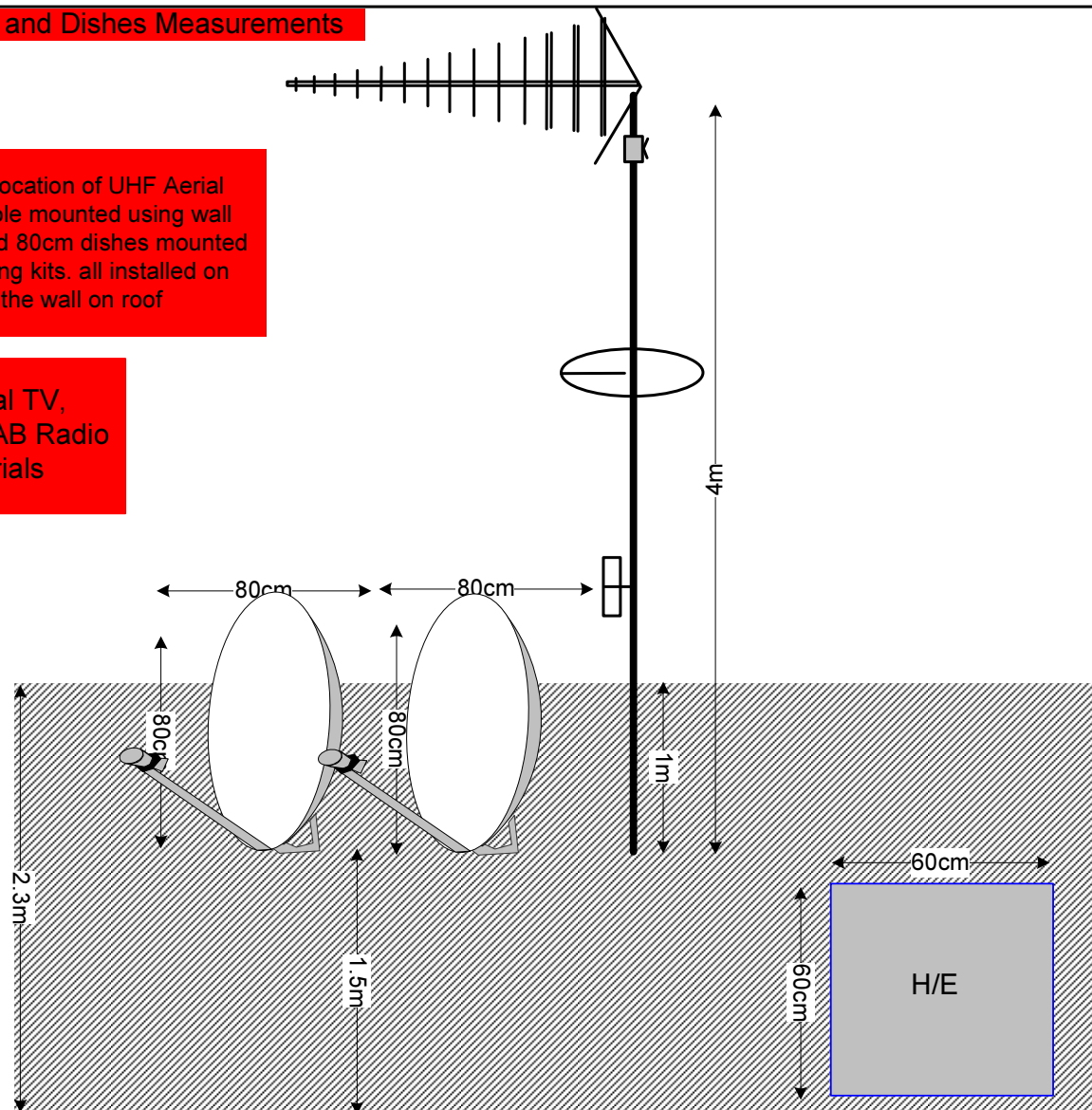
60 cables = 90mm



09. Antenna and Dishes Measurements

Proposed location of UHF Aerial on a 4m pole mounted using wall bracket and 80cm dishes mounted using lashing kits. all installed on the side of the wall on roof

Digital TV,
FM & DAB Radio
Aerials



Form No. SCC 013 SCC International – 1 Fieldings Road, Cheshunt, Herts, EN8 9TL, . Tel: 01992 642255. Website: www.scci.co.uk

Site Reference:	B04122-23/09	Site Address:	FLATS 113-148 MAKEPEACE MANSIONS, CAMDEN LONDON N6 6ER
Date:	18/11/2011	Client:	LBC0765.0/ 0766.0
Number of Points:	36	System Type:	9WIRE IRS SKY+
		Surveyed By:	G. Henebery
		Drawn By:	W. Kisala

Please consider the environment before printing this document – Recycle Wherever Possible

