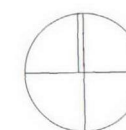


Key:

Private Residential



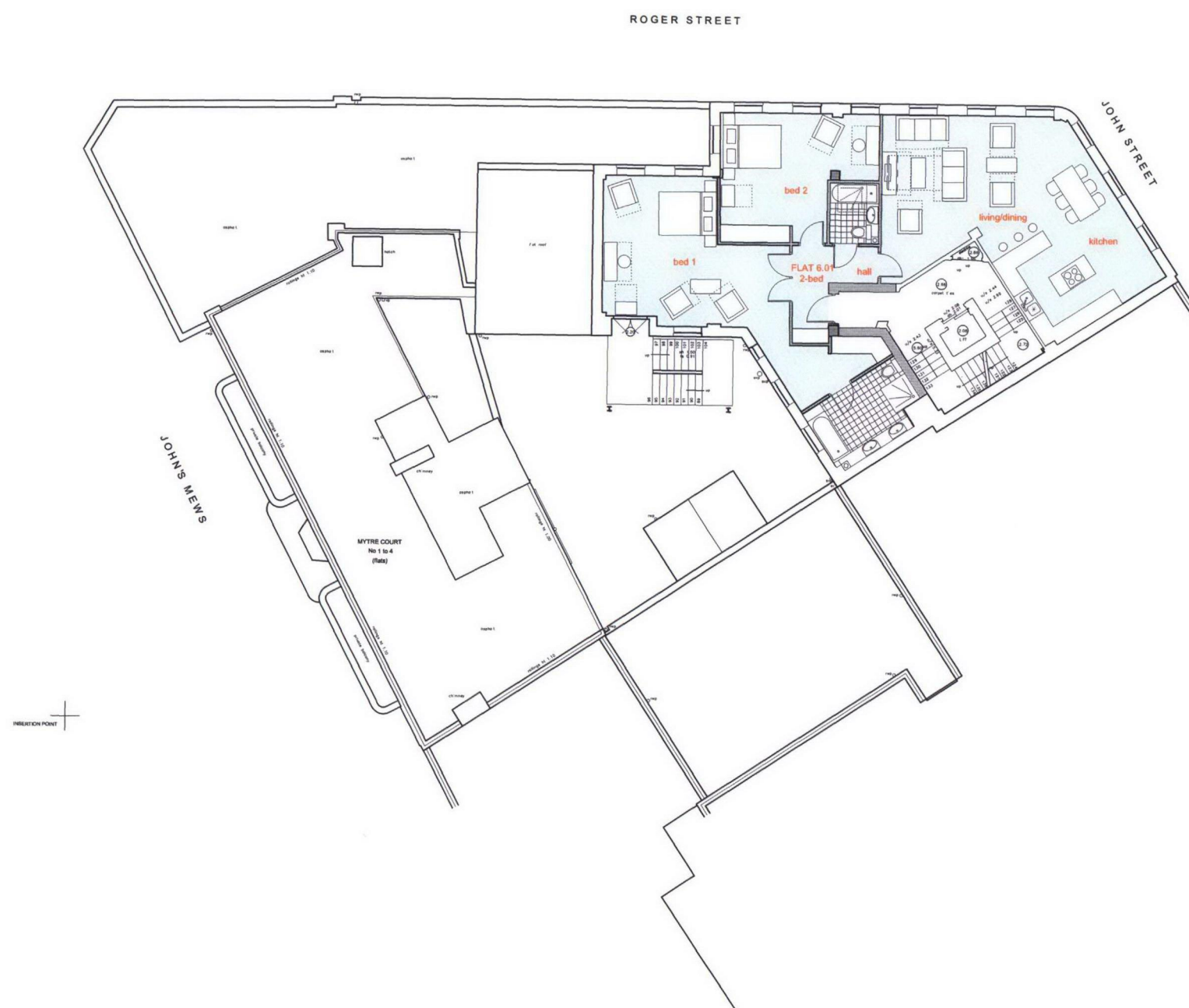
Flat 6.01 (2-BED) - 127sq.m.



0m 5m

Revisions:

00 08 Nov 11  
01 15 Dec 11



Haines House,  
21 John Street,  
London W1CN

for

One West  
Smithfield LLP.  
1237-D2107-rev01

Scale: 1:100 @ A3  
Date: 08 Nov 11

Sixth floor plan:  
Proposed

Planning