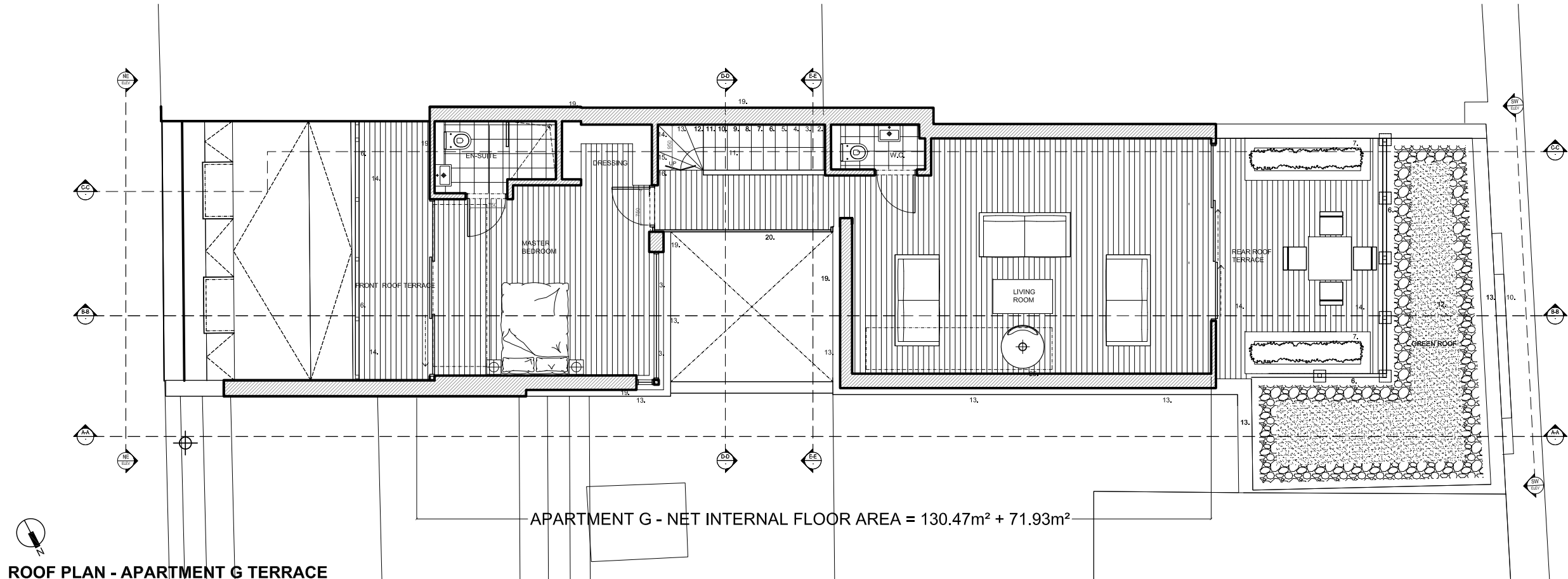
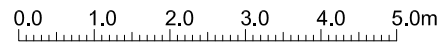


THIRD FLOOR PLAN - APARTMENT G

SCALE 1 : 100



ROOF PLAN - APARTMENT G TERRACE

SCALE 1 : 100



GA COMPUTER FILE

NOTES

- LEGEND**
- DENOTES EXISTING STRUCTURE RETAINED
 - DENOTES NEW WALL / PARTITION CONSTRUCTION
 - DENOTES EXISTING STRUCTURE REMOVED
 - DENOTES NEW BEAM OVERHEAD
 - DENOTES OUTLINE OF STRUCTURE OVERHEAD
 - DENOTES LINE OF POTENTIAL OVERHEAD HOIST
 - 1. EXTERNAL WALL WITH DARK BLUE ENGINEERING BRICK FINISH
 - 2. EXTERNAL WALL WITH WHITE PAINTED BRICK WORK FINISH
 - 3. POWDER COATED ALUMINIUM WINDOW
 - 4. TIMBER CLAD COMMUNAL ENTRANCE DOOR & SIDE PAN
 - 5. EXTERNAL WALL WITH VERTICAL BRICK WORK FINISH
 - 6. NEW EXTERNAL IRON BALUSTRADE (MINIMUM 100MM ABOVE FINISHED FLOOR LEVEL)
 - 7. LANDSCAPE PLANTERS WITH RENDER FINISH
 - 8. EXTERNAL WALL WITH HORIZONTAL TIMBER CLADDING
 - 9. NEW FLAT/PITCHED ROOF WITH ZINC CLADDING
 - 10. NEW ALUMINIUM CLAD BAY WINDOW AND FEATURE SAND.
 - 11. NEW STAIRWELL
 - 12. GREEN ROOF CONSTRUCTION
 - 13. PARAPET WALL / ROOF DETAIL WITH STONE CAPPING
 - 14. NEW TIMBER DECKING
 - 15. OBSCURED GLAZING
 - 16. NEW FULL HEIGHT POWDER COATED ALUMINIUM GLAZING PANEL
 - 17. NEW LIFT SHAFT POSITION
 - 18. NEW INDIVIDUAL DWELLING ENTRANCE DOOR
 - 19. ZINC CLAD EXTERNAL WALL CONSTRUCTION
 - 20. NEW POWDER COATED ALUMINIUM GLAZED PANEL SET FLUSH WITH EXTERNAL WALL SURFACE
 - 21. NEW 81 FOLD BIN STORE DOOR TO MATCH BRICK WORK
 - 22. EXTERNAL WALL WITH YELLOW LONDON STOCK BRICK FINISH TO MATCH NEIGHBOURING PROPERTIES
 - 23. NEW POWDER COATED ALUMINIUM TOP HUNG DOUBLE GLAZED WINDOW WITH RESTRICTED OPENING TO MAX. 250mm
 - 24. NEW SLATTED ANGLED TIMBER FENCE TO PREVENT OVERLOOKING MINIMUM 100MM ABOVE FINISHED FLOOR LEVEL
 - 25. NEW SET-BACK ZINC COVERED WALL TO MATCH ROOF
 - 26. P.V. SOLAR PANELS FIXED TO SOUTH FACING SLOPED ROOF
 - 27. POWDER COATED ALUMINIUM ROOFLIGHT

H	21.12.2011	4th Floor revised to include top floor of 4 bed flat.
G	04.07.2011	Green roof note added following case officer comments
F	14.04.2011	Amendments as requested in planning officer email -08.04.2011
E	15.03.2011	Amendments to brick finish, fenestration and fencing following comments from Council
D	09.12.2010	Amendments prior to submission to Camden Borough Council
C	30.11.2010	Bay windows amended following comments from comments from Highways Dept, 30.11.2010
B	17.11.2010	Amendments following client comments 17.11.2010
A	15.11.2010	Amendments following client telephone conversation 15.11.2010

REV	DATE	DESCRIPTION
		DRAWING ISSUE
		Approval
		CLIENT

Lear House Properties

**GRESFORD
ARCHITECTS**

Unit C1
3 Bradbury St
London
N16 8JN

t: +44 (0) 20 7249 1855
ec: info@gresfordarchitects.co.uk
f: +44 (0) 7812 9470

PROJECT TITLE
**61 Grays Inn Road
London
WC1**

DRAWING TITLE
**Third Floor Plan
PROPOSED**

SCALE 1/100@A3	DRAWN JMA
DATE October 2010	CHECKED -
DWG NO. 459-102	REVISION H