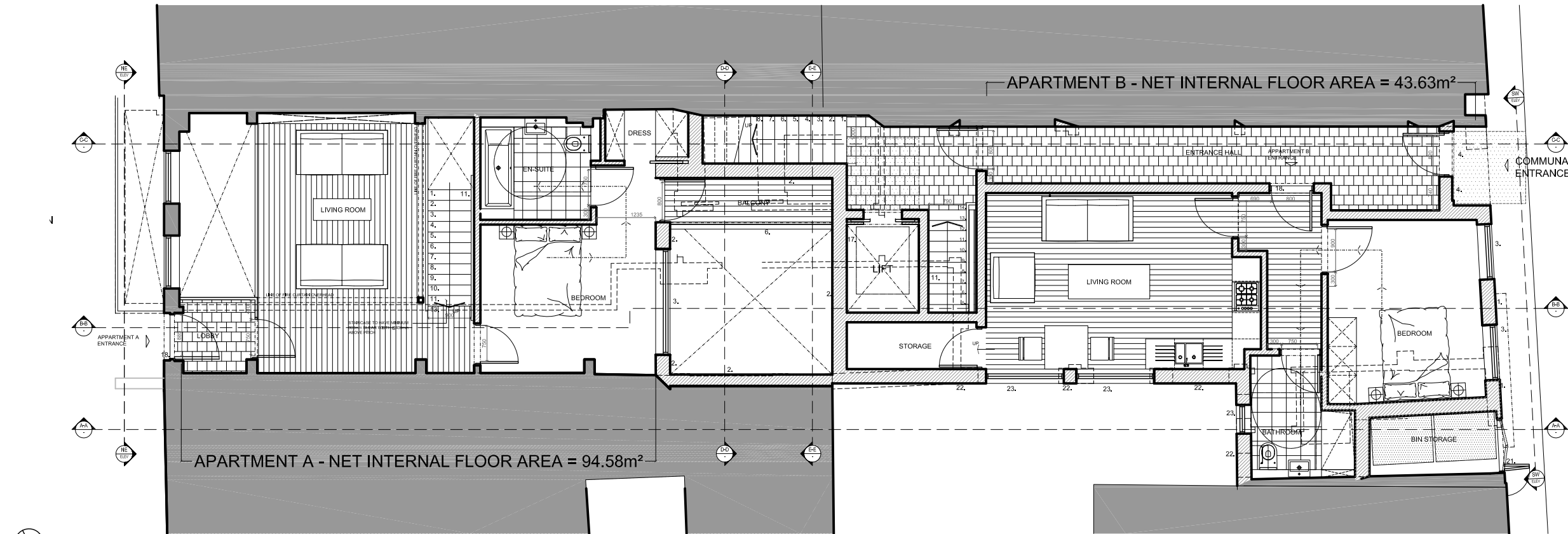


BASEMENT FLOOR PLAN - APARTMENT A & STORE

SCALE 1 : 100

0.0 1.0 2.0 3.0 4.0 5.0m



GROUND FLOOR PLAN - APARTMENTS A & B

SCALE 1 : 100

0.0 1.0 2.0 3.0 4.0 5.0m

GA COMPUTER FILE

NOTES

- LEGEND**
- DENOTES EXISTING STRUCTURE RETAINED
 - DENOTES NEW WALL / PARTITION CONSTRUCTION
 - DENOTES EXISTING STRUCTURE REMOVED
 - DENOTES NEW BEAM OVERHEAD
 - DENOTES OUTLINE OF STRUCTURE OVERHEAD
 - DENOTES LINE OF POTENTIAL OVERHEAD HOIST
- EXTERNAL WALL WITH DARK BLUE ENGINEERING BRICK FINISH
 - EXTERNAL WALL WITH WHITE PAINTED BRICK WORK FINISH
 - POWDER COATED ALUMINIUM WINDOW
 - TIMBER CLAD COMMUNAL ENTRANCE DOOR & SIDE PANEL
 - EXTERNAL WALL WITH VERTICAL BRICK WORK FINISH
 - NEW EXTERNAL IRON BALUSTRADE (MINIMUM 1100mm ABOVE FINISHED FLOOR LEVEL)
 - LANDSCAPE PLANTERS WITH RENDER FINISH
 - EXTERNAL WALL WITH HORIZONTAL TIMBER CLADDING
 - NEW FLAT/PITCHED ROOF WITH ZINC GLAZING
 - NEW ALUMINIUM CLAD BAY WINDOW AND FEATURE BAND
 - NEW STAIRWELL
 - GREEN ROOF CONSTRUCTION
 - PARAPET WALL / ROOF DETAIL WITH STONE FINISH
 - NEW TIMBER DECKING
 - OBSCURED GLAZING
 - NEW FULL HEIGHT POWDER COATED ALUMINIUM GLAZING PANEL
 - NEW LIFT SHAFT POSITION
 - NEW INDIVIDUAL DWELLING ENTRANCE DOOR
 - ZINC CLAD EXTERNAL WALL CONSTRUCTION
 - NEW POWDER COATED ALUMINIUM GLAZED PANEL SET FLUSH WITH EXTERNAL WALL SURFACE
 - NEW BI FOLD BIN STORE DOOR TO MATCH BRICK WORK
 - EXTERNAL WALL WITH YELLOW LONDON STOCK BRICK FINISH TO MATCH NEIGHBOURING PROPERTIES
 - NEW POWDER COATED ALUMINIUM TOP HUNG DOUBLE GLAZED WINDOW WITH RESTRICTED OPENING TO MAX. 200mm
 - NEW SLATTED ANGLED TIMBER FENCE TO PREVENT OVERLOOKING MINIMUM 1800mm ABOVE FINISHED FLOOR LEVEL
 - NEW SET-BACK ZINC COVERED WALL TO MATCH ROOF
 - P.V. SOLAR PANELS FIXED TO SOUTH FACING SLOPED ROOF

I	04.07.2011	Green roof note added, basement floor level altered following comments from case officer.
H	27.05.2011	Amendments to bin store as requested by local authority
G	13.05.2011	Amendments as requested in planning officer email 10.05.2011
F	14.04.2011	Amendments as requested in planning officer email 08.04.2011
E	15.03.2011	Amendments to brick finish, fenestration and fencing following comments from Council
D	09.12.2010	Amendments prior to submission to Camden Borough Council
C	30.11.2010	Bay windows amended following comments from comments from Highways Dept. 30.11.2010
B	17.11.2010	Amendments following client comments 17.11.2010
A	15.11.2010	Amendments following client telephone conversation 15.11.2010

REV	DATE	DESCRIPTION
-----	------	-------------

DRAWING ISSUE

Approval

CLIENT

Lear House Properties

**GRESFORD
ARCHITECTS**

Unit C1
3 Bradbury St
London
N16 8JN

t: +44 (0) 20 7248 1855
ec: info@gresfordarchitects.co.uk
f: +44 (0) 7812 9470

PROJECT TITLE

61 Grays Inn Road
London
WC1

DRAWING TITLE

Basement & Ground Floor Plans
PROPOSED

SCALE	DRAWN
1/100@A3	JMA
DATE	CHECKED
October 2010	-
DWG NO.	REVISION
459-100	I