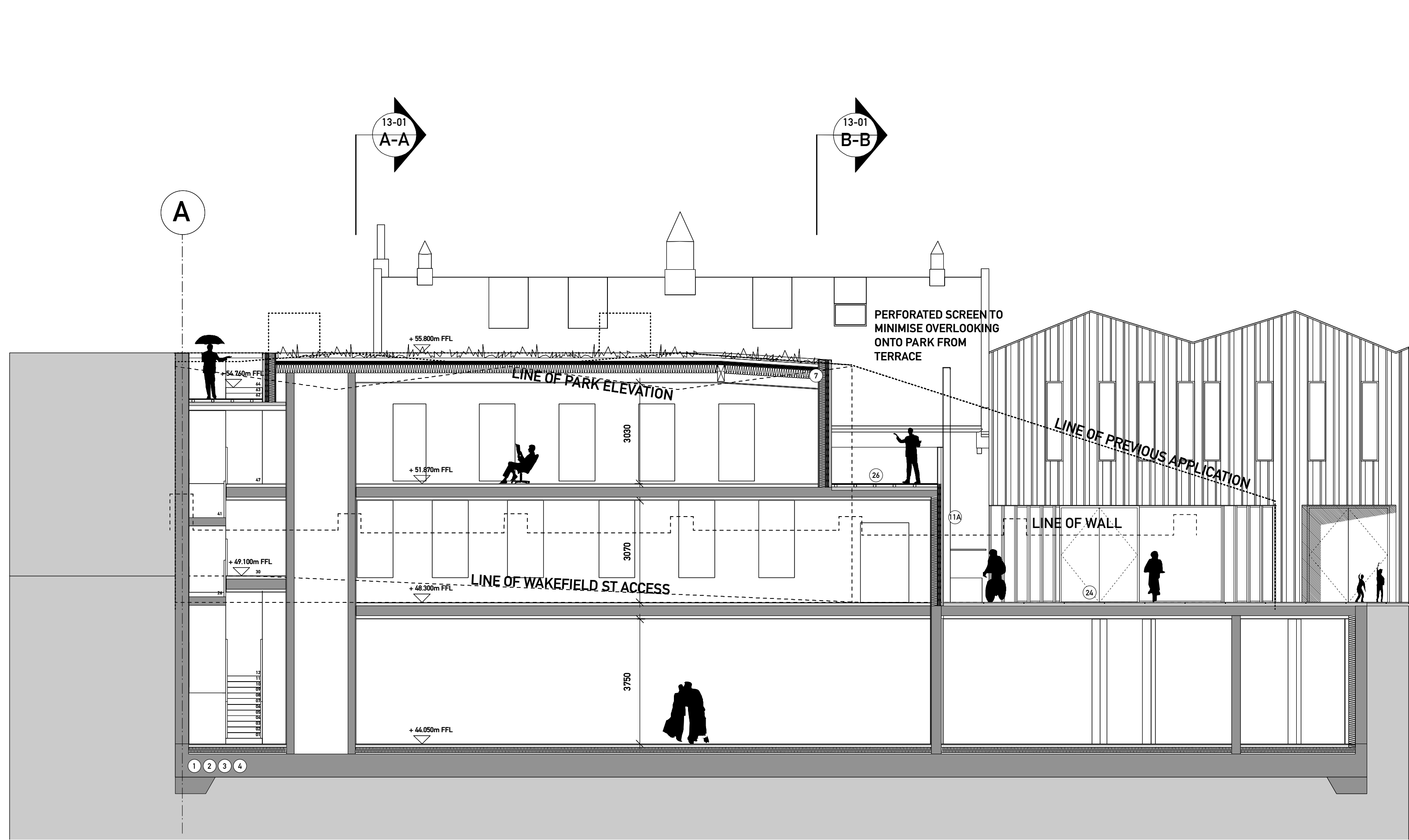
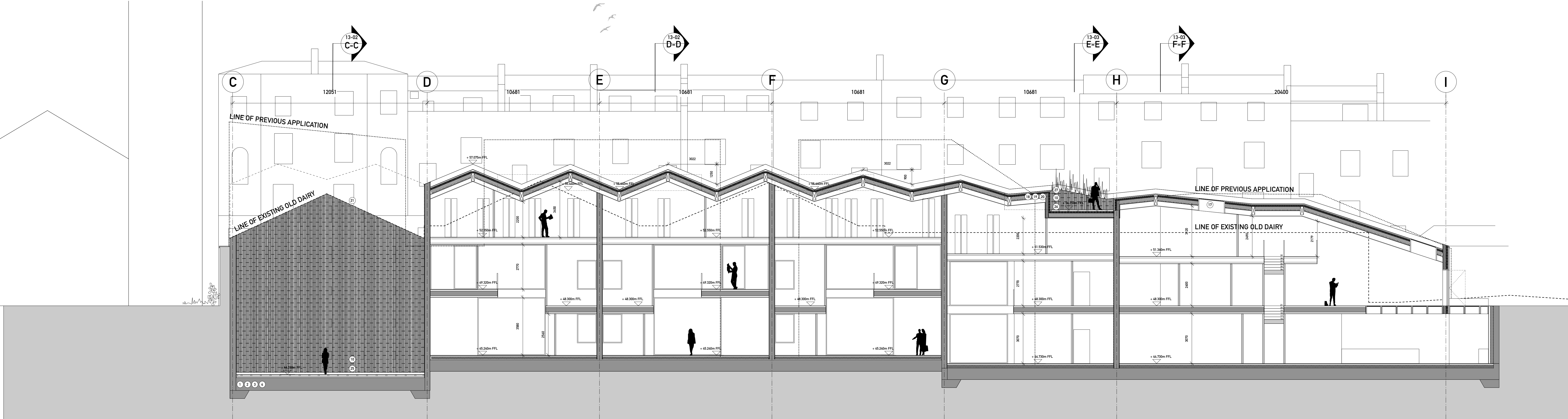


SECTION G-G



SECTION H-H



LINE OF PREVIOUS APPLICATION  
LINE OF EXISTING OLD DAIRY

DRAWING TO BE READ IN CONJUNCTION WITH THE SPECIFICATION AND ALL RELEVANT DRAWINGS. DO NOT SCALE FROM THIS DRAWING.

MATERIAL SPECIFICATION:

1. Basement to be waterproofed to grade 2 using specialist concrete admixture, waterproof to be used at all joints.  
2. 300mm raft foundation under basement.  
3. 300mm flat concrete slab with 150mm insulation.  
4. 200mm concrete retaining structure to basement perimeter, underpinning to listed wall according to engineer's method statement.  
5. Core buildinging concrete walls 200mm.  
6. All steel columns under flat slab to be 225mm diameter fireproofed with intumescent paint.  
7. Wall + Roof Construction to incorporate continuous insulation in addition to insulation within the structure, to achieve a value of 0.133 kWh/m<sup>2</sup>.

- FLOOR CONSTRUCTION:  
8. Floating floor + 18mm plywood slab, metal web floor system, W500.  
9. 40mm concrete.  
10. Glazed floor sections.  
11. Structural laminated glass floor panels, anti-slip surface finish.

- CERAMIC CLADDING:  
12. Glazed facade: glazed ceramic cladding, 100mm x 100mm and 100mm x 100mm, varied tones of white and cream, hung on aluminium sections. Vertical joints lagged, horizontal joints open maximum 10mm. To courtyard, undercroft, roof terrace and garden wall to rear of residential and commercial units as per Drawing. Manufacturer: RBB ceramics.

- METAL CLADDING:  
13. Copper-alloy cladding comprising 1.5mm thick TECUB Brass Profiled Elements.  
14. Support structure: Curved or similar secondary metal support system.  
15. Cladding system: Wet-lap Profiled TECUB Brass Cladding System.  
16. Cladding panel: Pre-fabricated finished brass, minimum 1mm.  
17. Finish: Natural patina, brushed finish or other surface as architect's approved sample.  
18. Contractor design to include adequate measures to prevent bi-metallic or chemical corrosion of adjacent materials to the brass.  
19. Copper-alloy profiled cladding, TECUB Brass or similar approved.  
20. Copper-alloy cladding, TECUB Brass or similar approved.

- GLAZING:  
21. Ground + lower ground floor facade, glazing to incorporate sliders and openings, aluminium frame, polycarbonate powder coated to match metal cladding.  
22. Upper ground floor facade position to be mechanically adjustable for increased privacy.  
23. For hardwood timber sliding windows behind metal fins, Fixed fins 130mm x 220mm and flush with facade or regular openings, sliding fins 130mm x 220mm and flush with facade. Thermal glass substrate.  
24. 2 glazing unit face from facade. Thermal glass substrate.  
25. Inward opening aluminium windows, 500mm x 2400mm/2 x 300mm x 2400mm, insulated profile, metal frame, thermal glass substrate, insect mesh around window to maximise reflectance.  
26. Glazed roof supported on 70mm x 400mm concrete fins at approx 1m centres.  
27. Rooflights, framesless, steel, flush with standing seam roof manufacturer The Rooflight Company range Neo (or similar).

- ROOF FINISHES:  
28. Standing seam copper-alloy to match profiled metal cladding, TECUB or similar.  
29. All gutters and downpipes to be concealed.  
30. Forecourt cladding to match profiled metal cladding, TECUB or similar.  
31. Brown roof over Unit 1 to increase biodiversity.

- BRICK CLADDING:  
32. Porcelain bricks 220mm x 100mm x 50mm, warm red, header bond with alternating bricks profiled + recessed, within integrated steel frame with aluminium brick profiled + recessed, within integrated steel frame.  
33. Windows to sit behind fixed brick facade. Sligger band setting out to base missing bricks as shown on elevation.

- EXTERNAL FLOOR FINISHES:  
34. Forecourt + reinforced limestone external paving, flamed finish.  
35. Basement courtyard + limestone external paving, flamed finish.  
36. Forecourt balustrade + limestone external paving, flamed finish.  
37. Unit 1 terrace + Roof Terrace + Cedar decking with rough planned finish.

- OTHER:  
38. Deeply glazed roof access hatch to private terrace.  
39. Note: Roof terrace to be fitted with beacon alarm system for fire safety purposes. Final solution to be approved by building control officer.  
40. Forecourt balustrade - to match profiled metal cladding, TECUB or similar.  
41. Roof terrace planter - to match profiled metal cladding, TECUB or similar.  
42. Glazed Terrace Balustrade.

- LANDSCAPE SPECIFICATION:  
43. FLOOR FINISHES: natural (or 10).  
44. Reclaimed and reuse existing granite sets, flat topped and smooth laid.  
45. Pavement width: 1.8m, precast concrete panels with circular glass pavement lights. Manufacturer: Lustrate or similar.  
46. Shared surface: natural (or 10).  
47. Robust large format limestone paving suitable for heavy duty access by emergency and servicing vehicles.  
48. Manufacturer: Hardscape.

- FOOTPATH, FORECOURT + COURTYARDS:  
49. Limestone paving, varied smooth and rough split texture, 100mm x 300mm.  
50. Thin gills with limestone edging and line grilles.  
51. Manufacturer: Hardscape.

- LIGHTING:  
52. Recessed flush into soffits of building overhangs.  
53. Manufacturer: Lush Position.

- CYCLE PARKING:  
54. Drivined stands of stainless steel tube, with concealed flaps, set in areas of free access.  
55. Manufacturer: Hardscape.

- PLANTING:  
56. Native species planted in zone along listed wall.

Project:  
1250  
Old Dairy

Drawing Title:  
Section G-G + H-H

Stage:  
Planning

Drawing no:  
1250-13-004

Date: 10.02.2012

Scale: 1:100

Format: A1++

Status: INFORMATION

Drawn by: LL

Revision: -

SESS