

Exitg wall
damaged by
tree roots

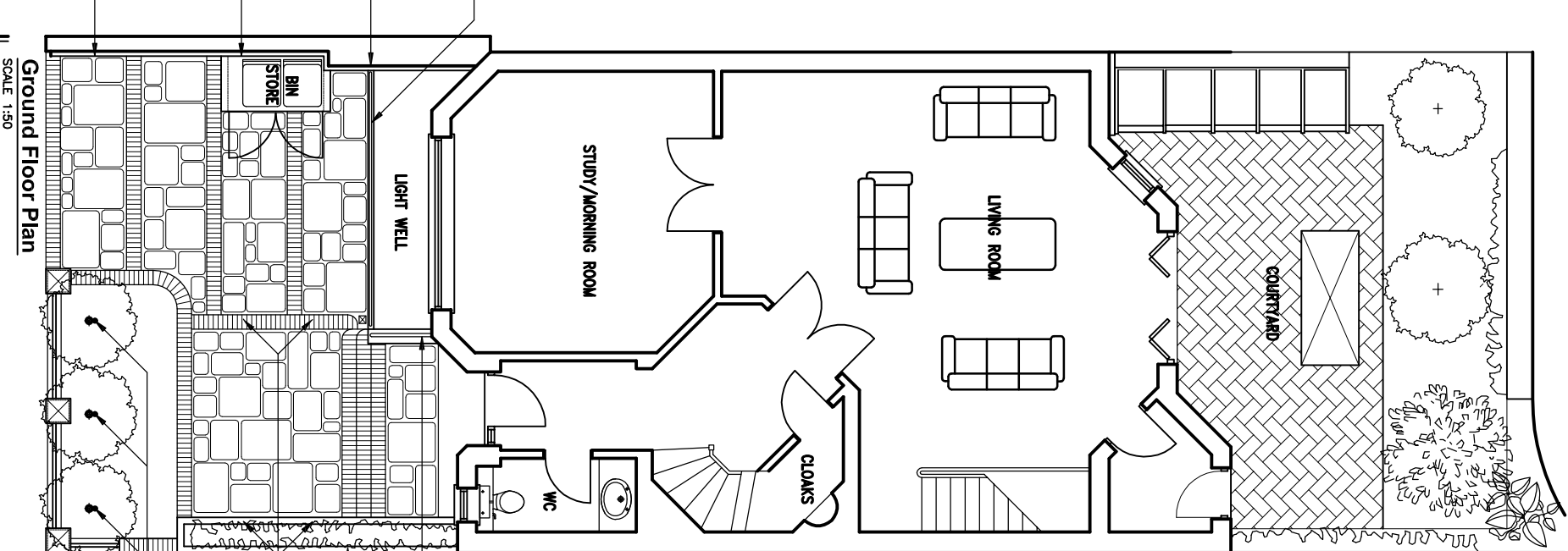
Damaged wall

New railings to match
railings on perimeter
wall

Mid brown coloured
external quality timber
lath cladding to extg
patched up wall

Mid brown coloured
external quality timber
bin store to match
cladding

Mid brown coloured
external quality timber
lath cladding to extg
patched up wall

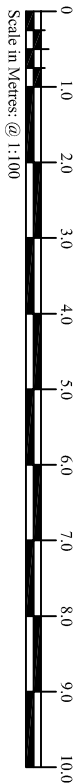


Damaged wall taken
down and rebuilt with
same bricks. New
banister railings to
match railings on
perimeter wall

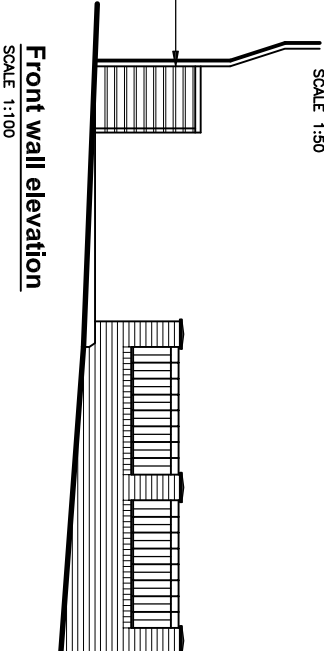
Brick Planter to replace
extg

Floor level low wattage
lights

Fixed low wattage
external lights secured
in position and located
on centre axis of trunk
so that light cannot
shine into house
windows opposite



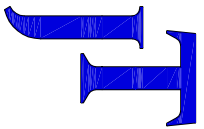
Mid brown coloured
external quality timber
bin store to match
cladding



New perimeter stock
bricks (to be in-keeping
with surrounding area)
new steel railings
painted black

Rev.

Project: PROPOSED MODIFICATIONS TO 10 CHRISTCHURCH HILL HAMPSTEAD HEATH, LONDON NW3 1LB			
Drawing Title: EXISTING & PROPOSED PLANS			
Drawn: JT	Date: SEPTEMBER 2011	Scale: 1:100 @ A3	
Drawing No. 09 1034 97			



JOHN TURNER
Plan & Design
11 The Weavers
Old Mill Lane
Old Town
Swindon
SN3 1SE
Tel: 01793 484687
Fax: 01793 638695
Email: john.plan@ntworld.com