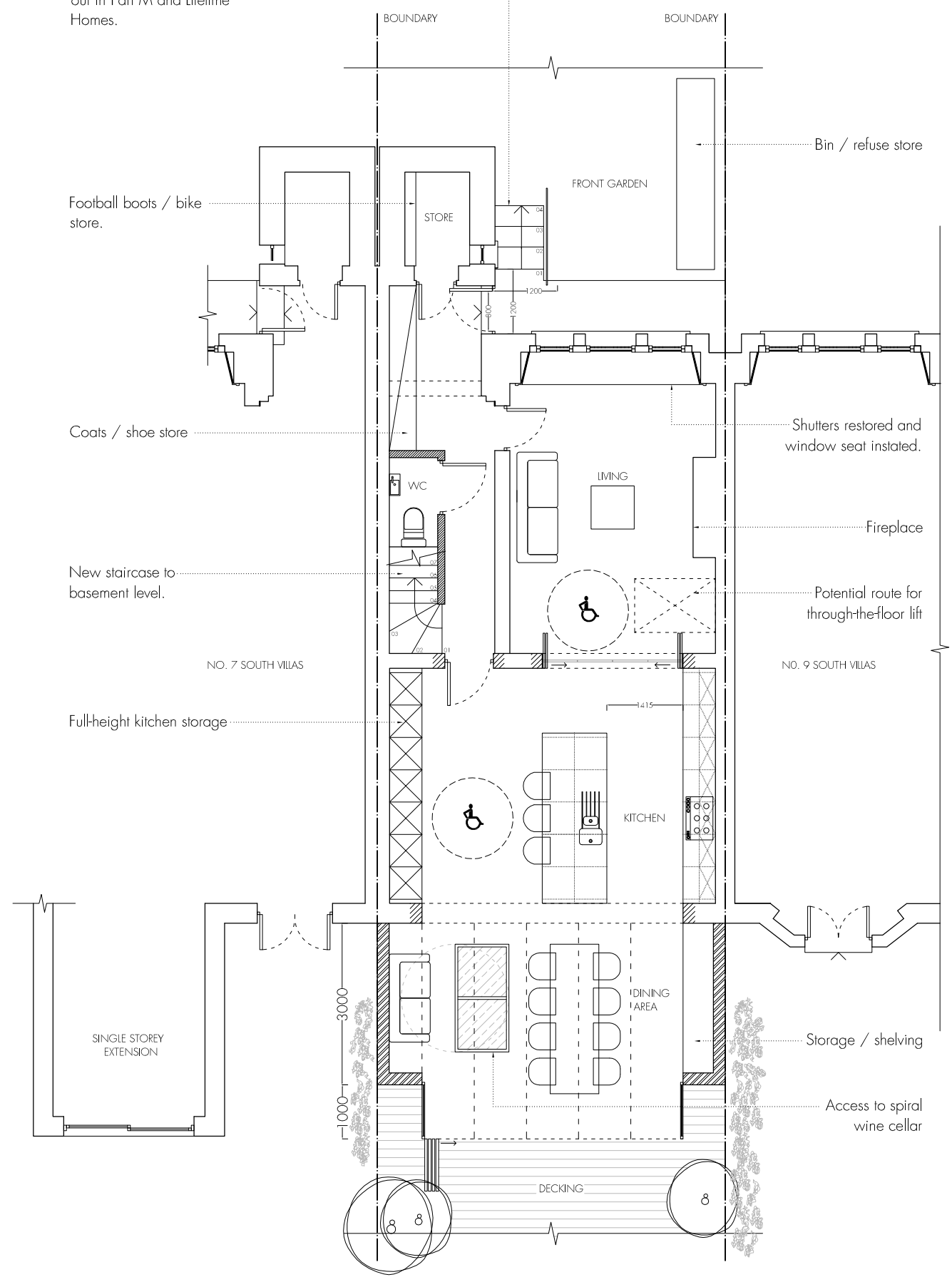


New ambulant steps to conform with standards as set out in Part M and Lifetime Homes.



LOWER GROUND FLOOR PLAN

Steps overhaul

Door relocated to original position. See no. 9 and 10 South Villas.

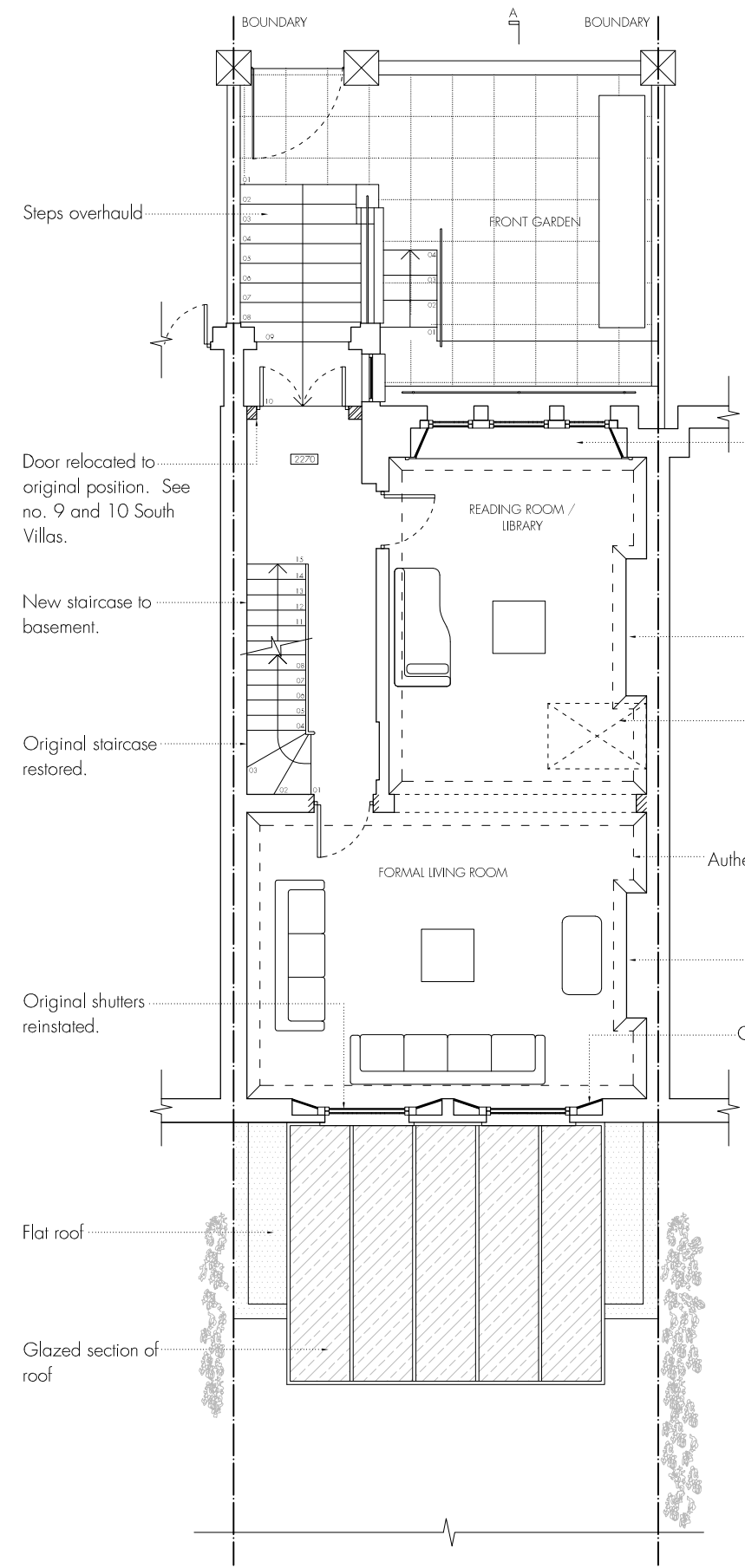
New staircase to basement.

Original staircase restored.

Original shutters reinstated.

Flat roof

Glazed section of roof



GROUND FLOOR PLAN

Do not scale off this drawing.

All indicated dimensions to be checked and verified on site by the Main Contractor before commencement of any fabrication drawings or work whatsoever on site.

Report all discrepancies to the Architect immediately. This drawing is to be read in conjunction with all the related Architect's and Structural Engineer's drawings, details and all relevant information.

rev.	rev. date	rev. description
------	-----------	------------------



**tasou**  
associates  
architects + structural engineers

4 Amwell Street, London, EC1R 1UQ T: 020 7713 7070 F: 020 7713 7071 E: tasou@tasou.co.uk		
project		
8 South Villas London NW1 9BS		
drwg title		
Approved Lower Ground and Ground Floor Plan		
date	drwg no.	rev.
October 2011	PP/01	
scale @ A1	job no.	
1:50	1326	