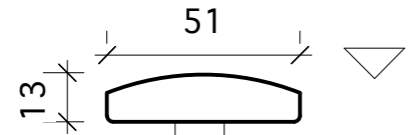


PROPOSED rear elevation 1:100

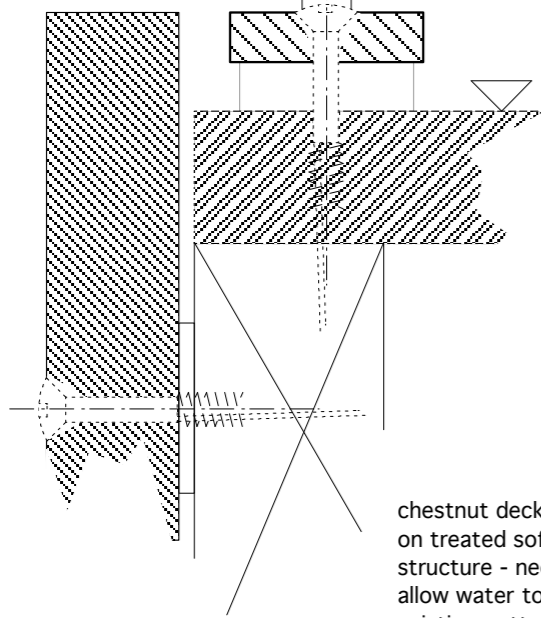
PROPOSED handrail detail A East+South sides 1:2



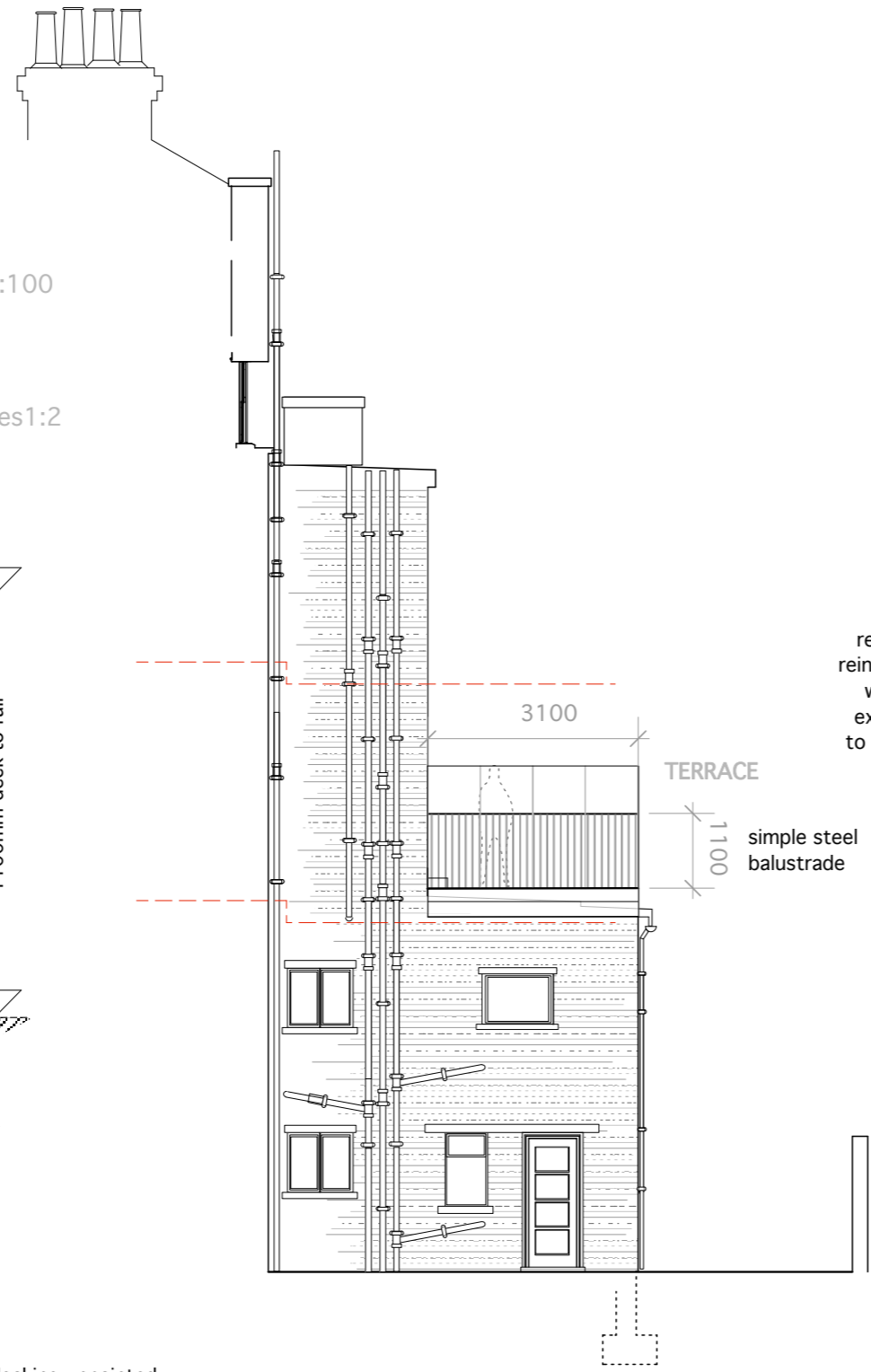
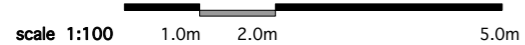
Iron balustrade and rail:  
The Real Wrought Iron Company  
Lyndhurst, Carlton Husthwaite,  
Thirsk, North Yorkshire YO7 2BJ  
www.realwroughtiron.com

1100mm deck to rail

35mm thick chestnut planking - unpainted



chestnut decking unpainted  
on treated softwood sub-  
structure - neoprene blocks  
allow water to run under to  
existing guttering

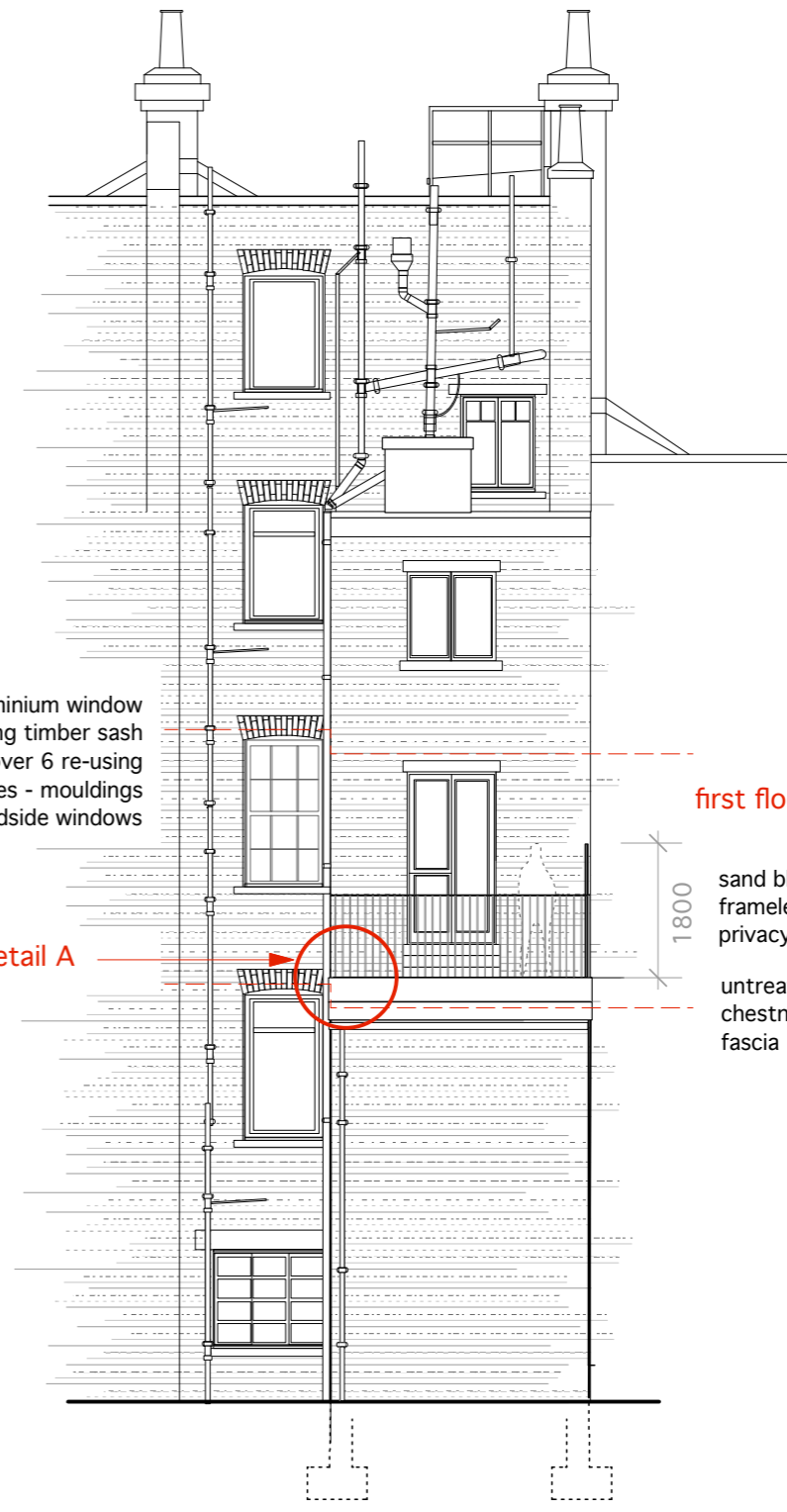


TERRACE

1100  
simple steel  
balustrade

remove aluminium window  
reinstall sliding timber sash  
window 6 over 6 re-using  
existing boxes - mouldings  
to match roadside windows

detail A



first floor flat

1800  
sand blasted  
frameless  
privacy screen  
untreated  
chestnut  
fascia

Arts Lettres Techniques Limited 2012 copyright is retained ©

arts lettres techniques ARCHITECT copyright is retained ©  
33A ARLINGTON ROAD LONDON NW1 7ES T/F (020) 7383 4778 Alan.Chandler@member.riba.org ALL DIMENSIONS MUST BE VERIFIED ON SITE  
PROJECT PRINCESS ROAD NUMBER PR 007 SCALE 1:100/1:2 @ A3  
SUBJECT proposed rear elevation / detail REVISION A DATE 04/02/12