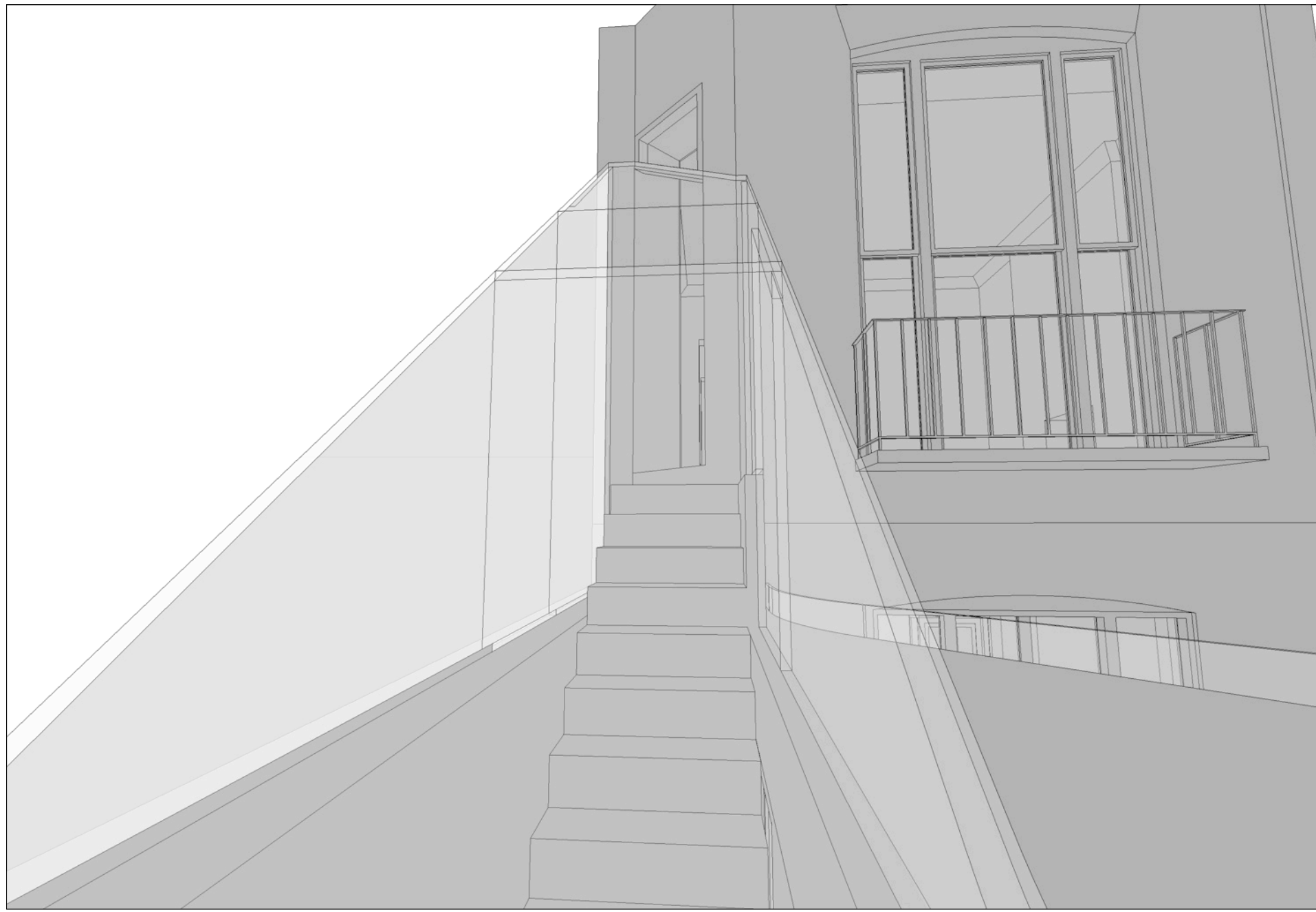


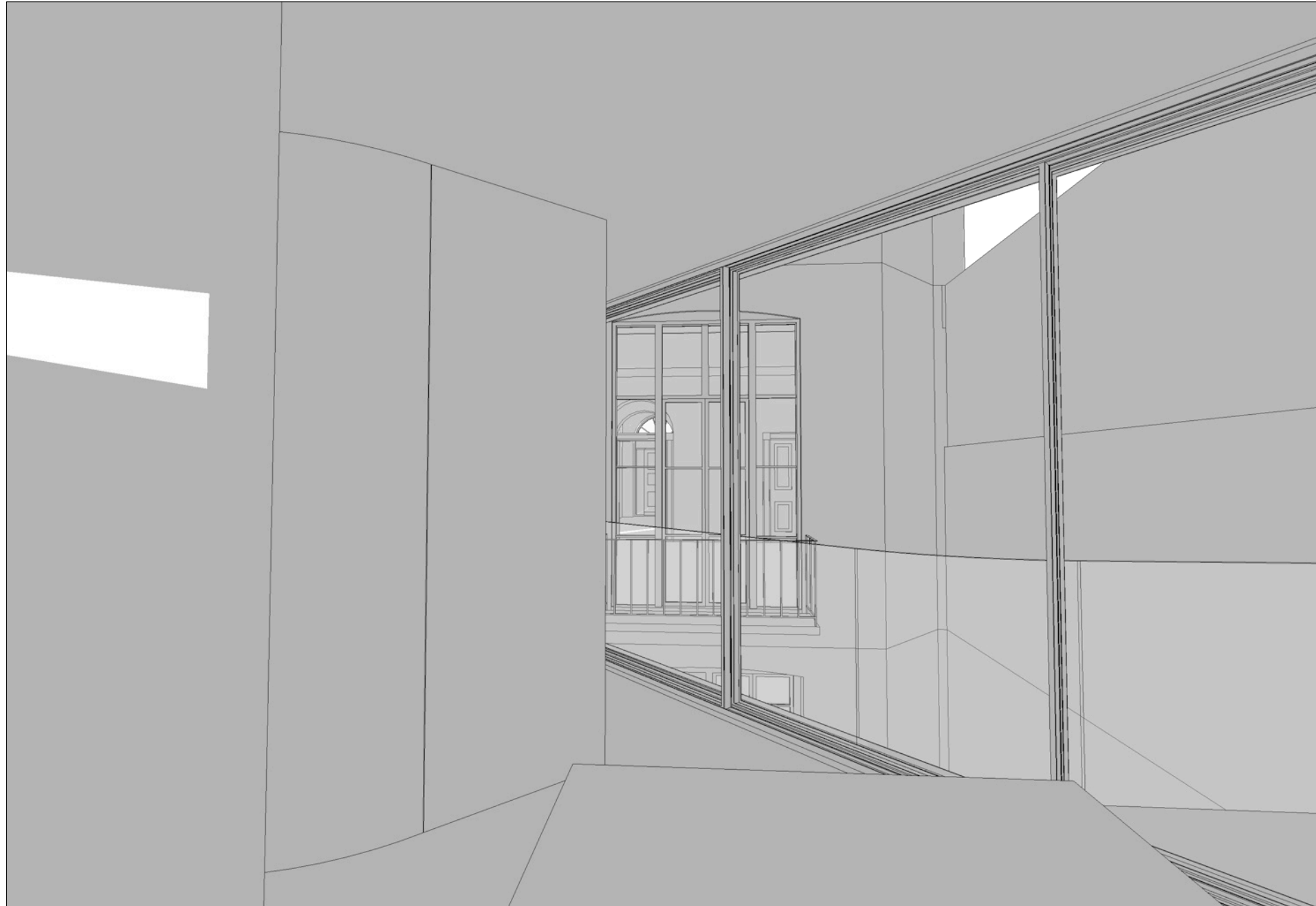
△ view from upper ground floor rear reception room towards proposed extension



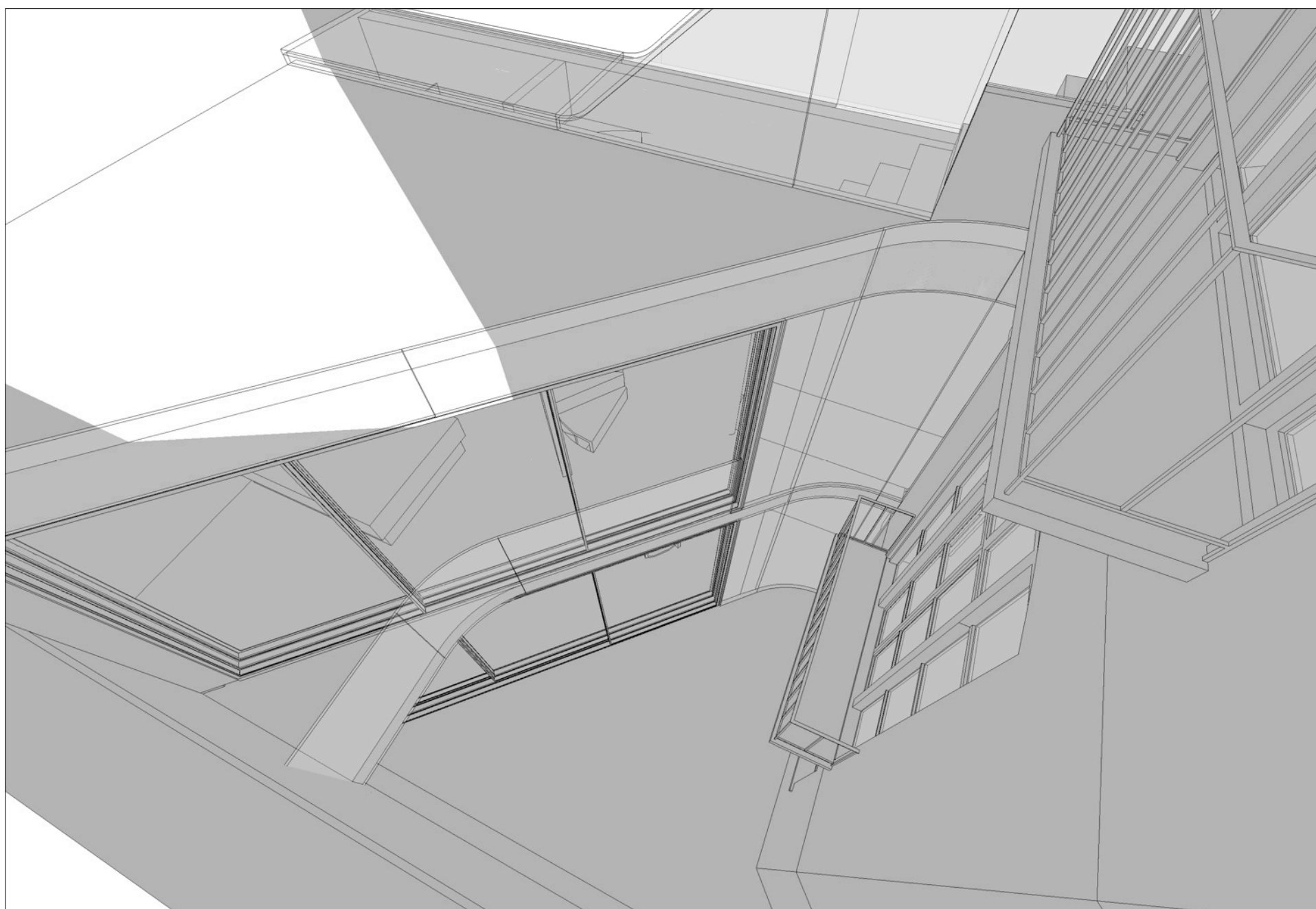
△ stair connection between proposed extension and first floor of main house



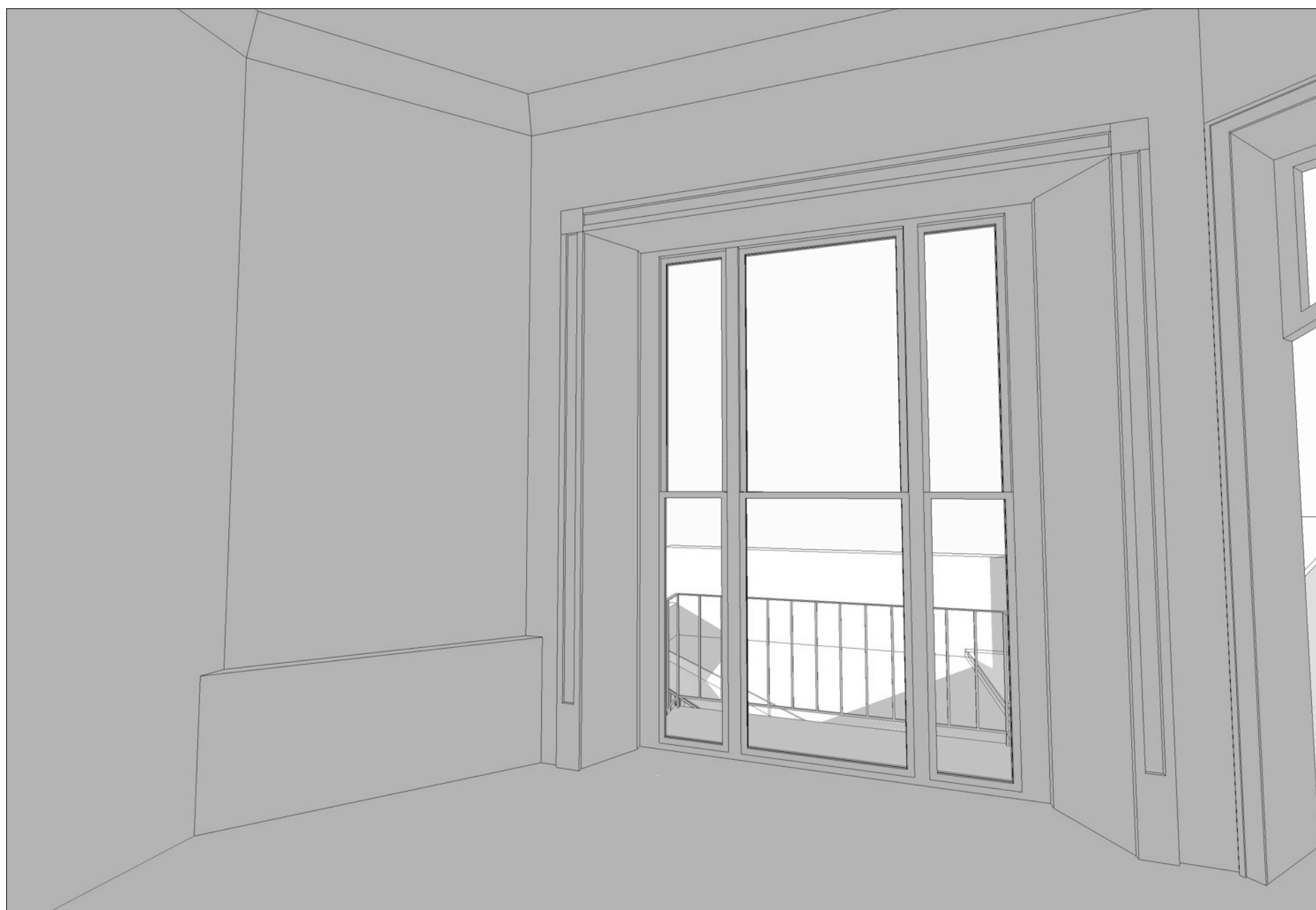
△ view from lower ground floor of proposed extension towards main house



△ view from upper ground floor of proposed extension towards main house



△ view of courtyard from above



△ view from first floor bedroom of main house towards proposed extension

220_V_120

3D Views
Proposed

Scale: NTS @ A1

25 January 2012
Revision: F

20 Mecklenburgh Square
London WC1N 2AD

Drawing Purpose: PLANNING

The information on this drawing is copyright of Barnaby Gunning Architects.
Do not scale from this drawing.
Dimensions are to be verified on site prior to construction.

Notes

Barnaby Gunning Architects

63 Loudoun Road, London NW8 0DQ, UK
via Bellezza 7, 20136 Milano, Italy
+441 20 73 72 24 24
www.barnabygunning.com