

00. INDEX

Drawing Number	Drawing Title	Description
B13038/00	Index	Index of Drawings.
B13038/01	Location Plan	Scale 1:1250 at A4.
B13038/02	Block Plan	Photo of Site from above.
B13038/03	Roof Plan	Drawing of block from above, showing equipment positions.
B13038/04	Roof Elevation	Description and location of the antenna and dishes + mounting and measurements and Description and location of the main cabinet size, colour + measurements.
B13038/05	East Elevation	Description and location of the Remote cabinet size, colour + measurements.
B13038/06	East Elevation 2	Description of Cable routes, loom sizes and entry points.
B13038/07	West Elevation 1	Description of Cable routes, loom sizes and entry points.
B13038/08	East Elevation 3	Description of Cable routes, loom sizes and entry points.
B13038/09	East Elevation 4	Description of Cable routes, loom sizes and entry points.
B13038/10	Existing Equipments	Description, location and view of the existing equipment on site before install.
B13038/11	Antenna, Dish Sizes & Typical Mounting Heights	Sketch of the Antenna and Dishes + mounting, position and height.

Form No. SCC 013 SCC International – 1 Fieldings Road, Cheshunt, Herts, EN8 9TL, . Tel: 01992 642255. Website: www.scci.co.uk



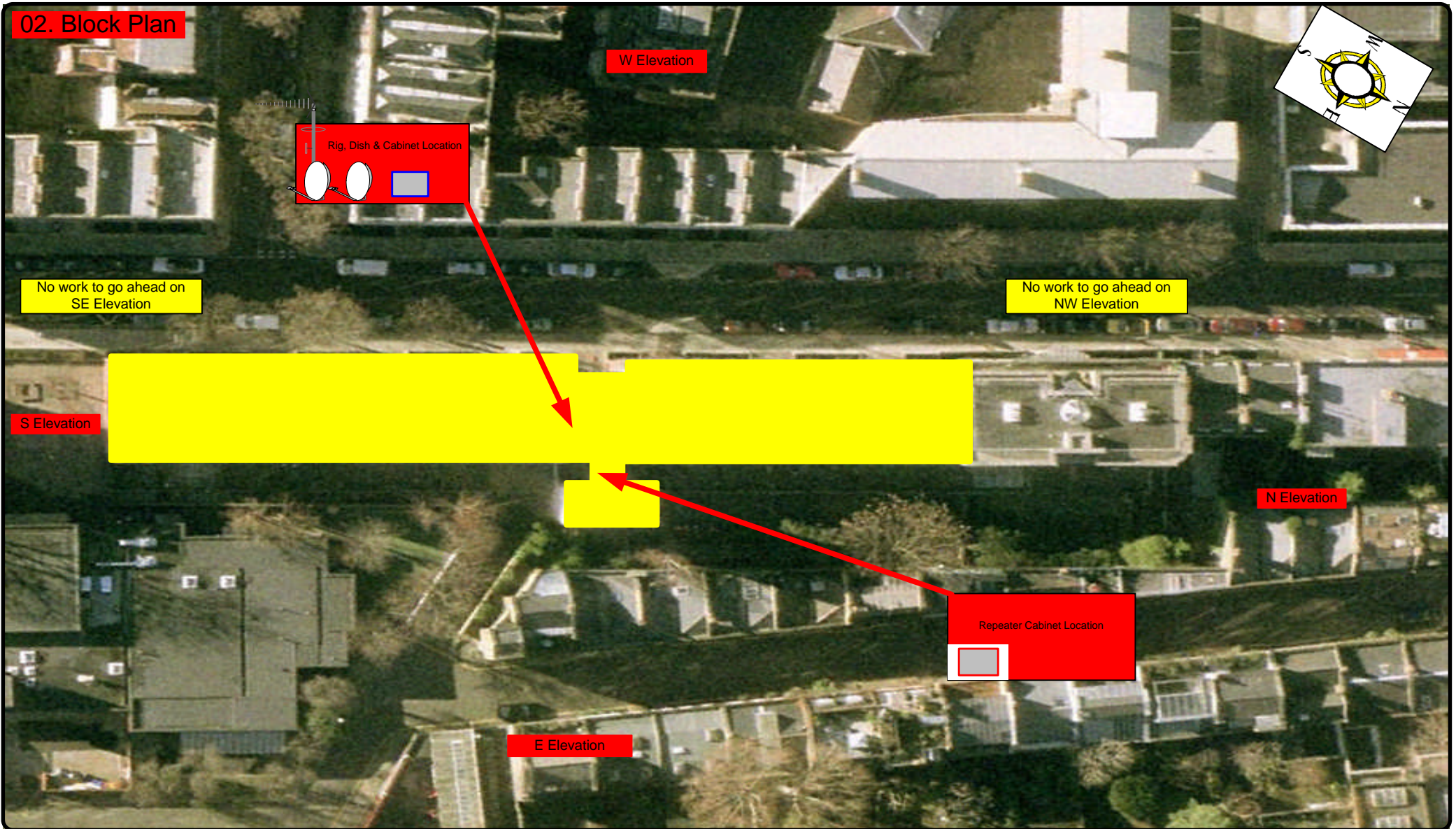
Please consider the environment before printing this document – Recycle Wherever Possible



Drawing No.	B13038/00	Site Address:	20-48 Millman Street, London, WC1N 3EQ		
Date:	31 st Jan 12	Site Ref:	LBC 007.0	Surveyed By:	Chris Gibson
Number of Points:	49	System Type	9Wire IRS Sky Plus	Drawn By:	Tom Chesterman



02. Block Plan



Form No. SCC 013 SCC International – 1 Fieldings Road, Cheshunt, Herts, EN8 9TL, . Tel: 01992 642255. Website: www.scci.co.uk



Please consider the environment before printing this document – Recycle Wherever Possible



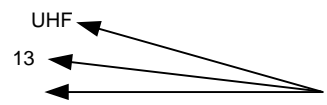
Drawing No.	B13038/02	Site Address:	20-48 Millman Street, London, WC1N 3EQ		
Date:	31 st Jan 12	Site Ref:	LBC 007.0	Surveyed By:	Chris Gibson
Number of Points:	49	System Type	9Wire IRS Sky Plus	Drawn By:	Tom Chesterman



03. Roof Plan

W Elevation

-Loom work from H/E on the roof of the building to run in Brown PVC cables to exit the H/E and run on tray to drop locations. To feed flats at front and rear wall of the building.
-2 cables per flat at entry points.

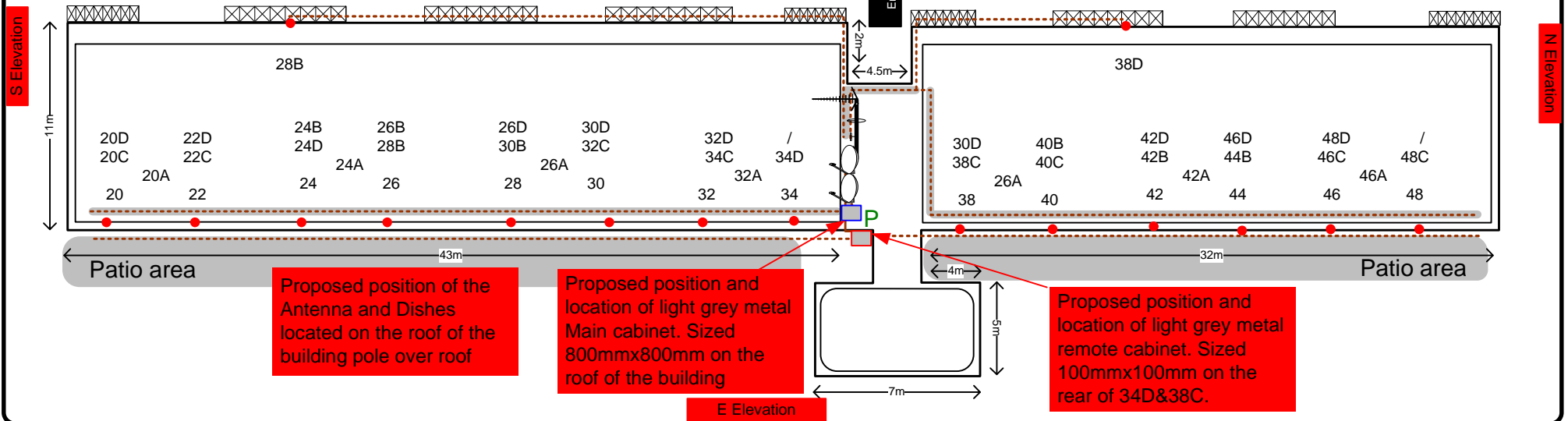


Gt Orman Street

Doughty Mews

Pathway

Pathway



Proposed position of the Antenna and Dishes located on the roof of the building pole over roof

Proposed position and location of light grey metal Main cabinet. Sized 800mmx800mm on the roof of the building

Proposed position and location of light grey metal remote cabinet. Sized 100mmx100mm on the rear of 34D&38C.

E Elevation

Form No. SCC 013 SCC International – 1 Fieldings Road, Cheshunt, Herts, EN8 9TL. . Tel: 01992 642255. Website: www.scci.co.uk

Please consider the environment before printing this document – Recycle Wherever Possible

Drawing No.	B13038/03	Site Address:	20-48 Millman Street, London, WC1N 3EQ		
Date:	31 st Jan 12	Site Ref:	LBC 007.0	Surveyed By:	Chris Gibson
Number of Points:	49	System Type	9Wire IRS Sky Plus	Drawn By:	Tom Chesterman



Each property will have two cables to lounge position.

Cable Harness sizes

2-4 cables = 15mm

6-8 cables = 20mm

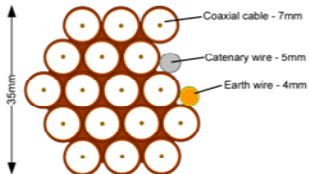
10-14 cables = 30mm

16-18 Cables = 35mm

20 cables = 40mm

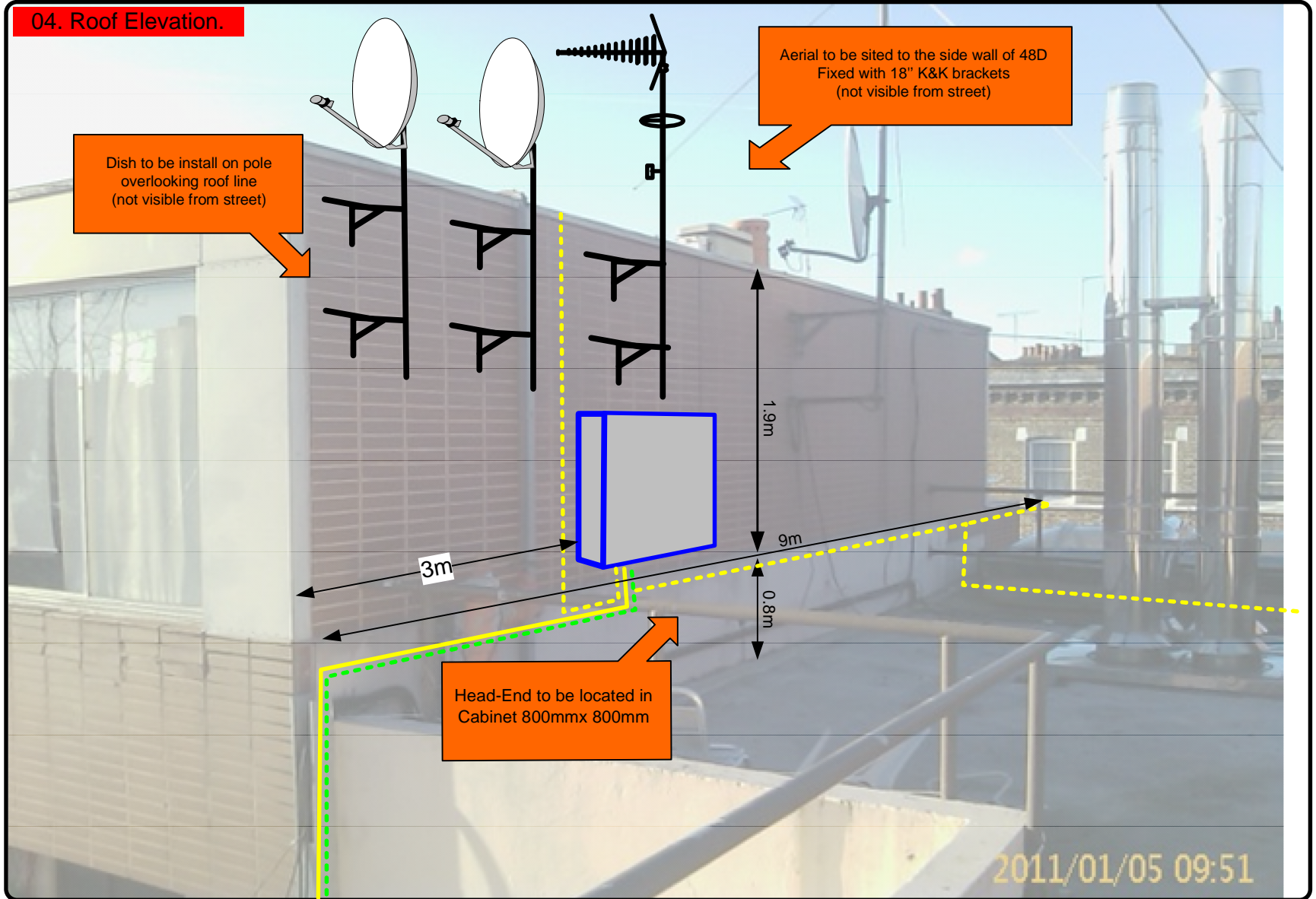
40 cables = 65mm

60 cables = 90mm



Typical loom for 16 coaxial cable
+ 1 earth wire, + 1 catenary wire

04. Roof Elevation.



Dish to be install on pole overlooking roof line (not visible from street)

Aerial to be sited to the side wall of 48D Fixed with 18" K&K brackets (not visible from street)

Head-End to be located in Cabinet 800mmx 800mm

2011/01/05 09:51

Form No. SCC 013 SCC International – 1 Fieldings Road, Cheshunt, Herts, EN8 9TL, . Tel: 01992 642255. Website: www.scci.co.uk

Please consider the environment before printing this document – Recycle Wherever Possible

Drawing No.	B13038/04	Site Address:	20-48 Millman Street, London, WC1N 3EQ		
Date:	31 st Jan 12	Site Ref:	LBC 007.0	Surveyed By:	Chris Gibson
Number of Points:	49	System Type	9Wire IRS Sky Plus	Drawn By:	Tom Chesterman



Each property will have two cables to lounge position.

Cable Harness sizes

2-4 cables = 15mm

6-8 cables = 20mm

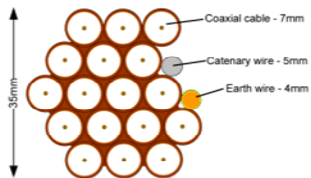
10-14 cables = 30mm

16-18 Cables = 35mm

20 cables = 40mm

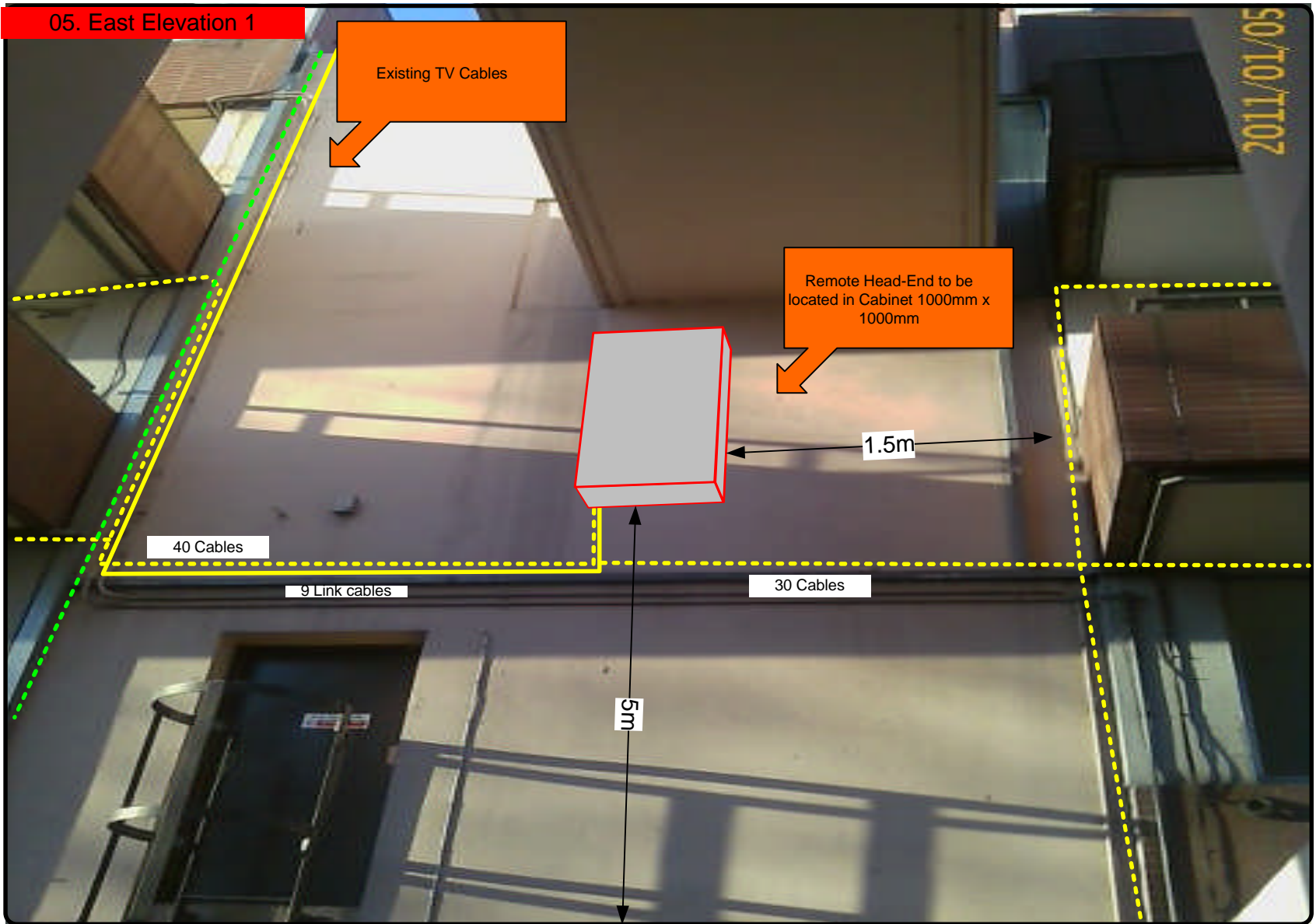
40 cables = 65mm

60 cables = 90mm



Typical loom for 16 coaxial cable + 1 earth wire, + 1 catenary wire

05. East Elevation 1



Form No. SCC 013 SCC International – 1 Fieldings Road, Cheshunt, Herts, EN8 9TL, . Tel: 01992 642255. Website: www.scci.co.uk

Please consider the environment before printing this document – Recycle Wherever Possible

Drawing No.	B13038/05	Site Address:	20-48 Millman Street, London, WC1N 3EQ		
Date:	31 st Jan 12	Site Ref:	LBC 007.0	Surveyed By:	Chris Gibson
Number of Points:	49	System Type	9Wire IRS Sky Plus	Drawn By:	Tom Chesterman



Each property will have two cables to lounge position.

Cable Harness sizes

2-4 cables = 15mm

6-8 cables = 20mm

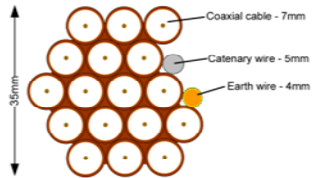
10-14 cables = 30mm

16-18 Cables = 35mm

20 cables = 40mm

40 cables = 65mm

60 cables = 90mm



Typical loom for 16 coaxial cable + 1 earth wire, + 1 catenary wire

06. East Elevation 2

-Loom work from H/E on the roof of the building to run in Brown PVC cables to exit the H/E and run on tray to drop locations. To feed flats at front and rear wall of the building.
-2 cables per flat at entry points.



Drawing No.	B13038/06	Site Address:	20-48 Millman Street, London, WC1N 3EQ		
Date:	31 st Jan 12	Site Ref:	LBC 007.0	Surveyed By:	Chris Gibson
Number of Points:	49	System Type	9Wire IRS Sky Plus	Drawn By:	Tom Chesterman



Each property will have two cables to lounge position.

Cable Harness sizes

2-4 cables = 15mm

6-8 cables = 20mm

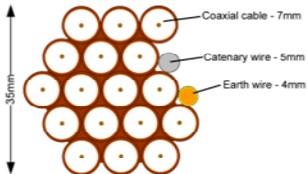
10-14 cables = 30mm

16-18 Cables = 35mm

20 cables = 40mm

40 cables = 65mm

60 cables = 90mm



Typical loom for 16 coaxial cable + 1 earth wire, + 1 catenary wire

07. West Elevation 1

Rig + Dish location on roof

-Loom work from H/E on the roof of the building to run in Brown PVC cables to exit the H/E and run on tray to drop locations. To feed flats at front and rear wall of the building.
-2 cables per flat at entry points.



Drawing No.	B13038/07	Site Address:	20-48 Millman Street, London, WC1N 3EQ		
Date:	31 st Jan 12	Site Ref:	LBC 007.0	Surveyed By:	Chris Gibson
Number of Points:	49	System Type	9Wire IRS Sky Plus	Drawn By:	Tom Chesterman



Each property will have two cables to lounge position.

Cable Harness sizes

2-4 cables = 15mm

6-8 cables = 20mm

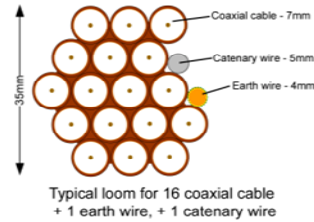
10-14 cables = 30mm

16-18 Cables = 35mm

20 cables = 40mm

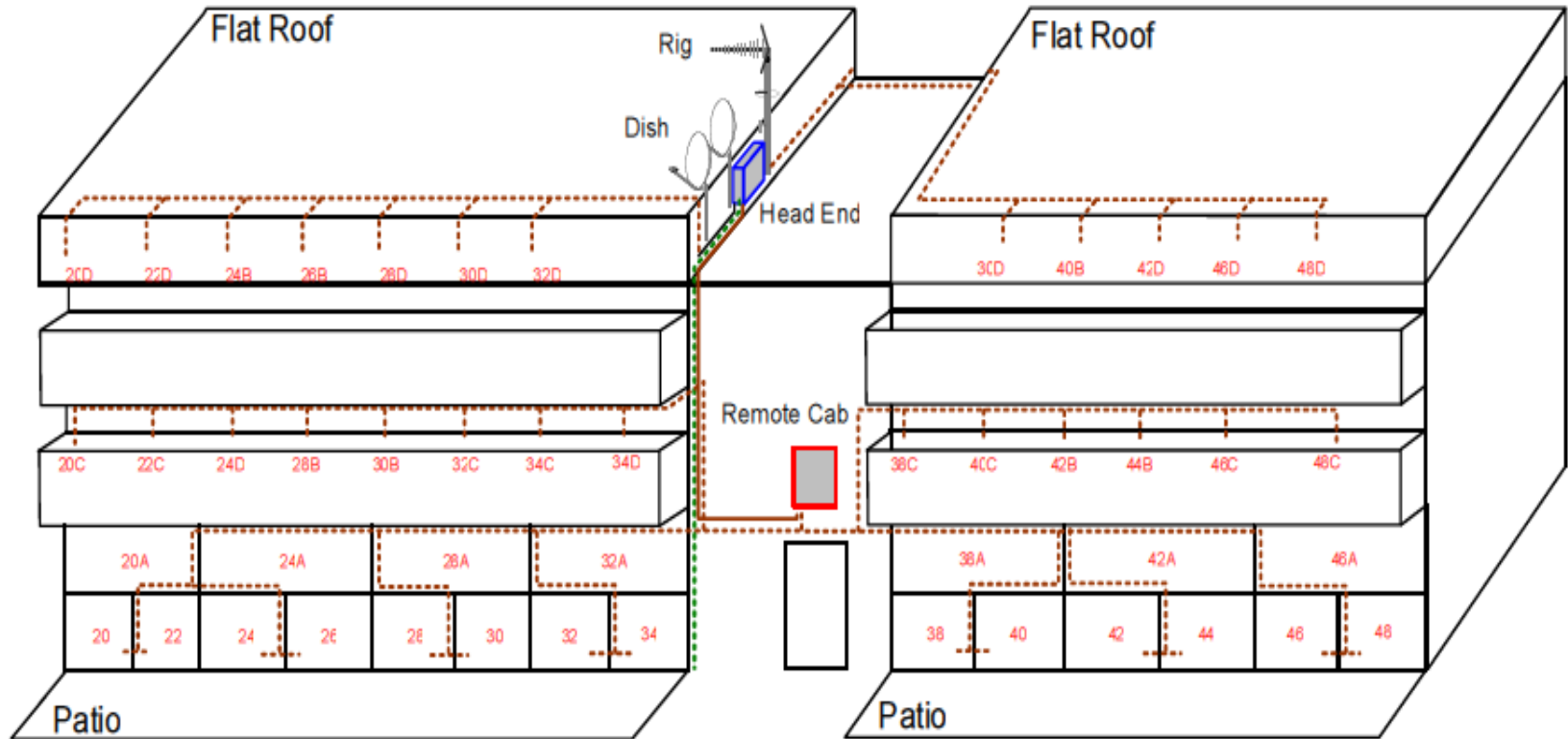
40 cables = 65mm

60 cables = 90mm



08. East Elevation 3

2 x Flats on front of building



Form No. SCC 013 SCC International – 1 Fieldings Road, Cheshunt, Herts, EN8 9TL, . Tel: 01992 642255. Website: www.scci.co.uk

Drawing No.	B13038/08	Site Address:	20-48 Millman Street, London, WC1N 3EQ		
Date:	31 st Jan 12	Site Ref:	LBC 007.0	Surveyed By:	Chris Gibson
Number of Points:	49	System Type	9Wire IRS Sky Plus	Drawn By:	Tom Chesterman



Please consider the environment before printing this document – Recycle Wherever Possible



Each property will have two cables to lounge position.

Cable Harness sizes

2-4 cables = 15mm

6-8 cables = 20mm

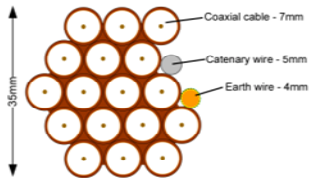
10-14 cables = 30mm

16-18 Cables = 35mm

20 cables = 40mm

40 cables = 65mm

60 cables = 90mm



Typical loom for 16 coaxial cable
 + 1 earth wire, + 1 catenary wire

07. East Elevation 4



-Galvanised metal trunking to be use to run cables along the corridor then into flats.
 -Metal. 7.5mmx5mm.

Form No. SCC 013 SCC International – 1 Fieldings Road, Cheshunt, Herts, EN8 9TL, . Tel: 01992 642255. Website: www.scci.co.uk

Please consider the environment before printing this document – Recycle Wherever Possible

Drawing No.	B13038/09	Site Address:	20-48 Millman Street, London, WC1N 3EQ		
Date:	31 st Jan 12	Site Ref:	LBC 007.0	Surveyed By:	Chris Gibson
Number of Points:	49	System Type	9Wire IRS Sky Plus	Drawn By:	Tom Chesterman



Each property will have two cables to lounge position.

Cable Harness sizes

2-4 cables = 15mm

6-8 cables = 20mm

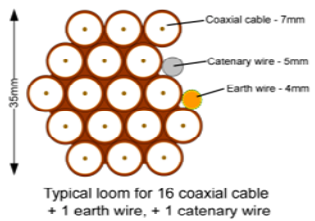
10-14 cables = 30mm

16-18 Cables = 35mm

20 cables = 40mm

40 cables = 65mm

60 cables = 90mm



10. Existing Equipments



Roof Elevation

Form No. SCC 013 SCC International – 1 Fieldings Road, Cheshunt, Herts, EN8 9TL . Tel: 01992 642255. Website: www.scci.co.uk



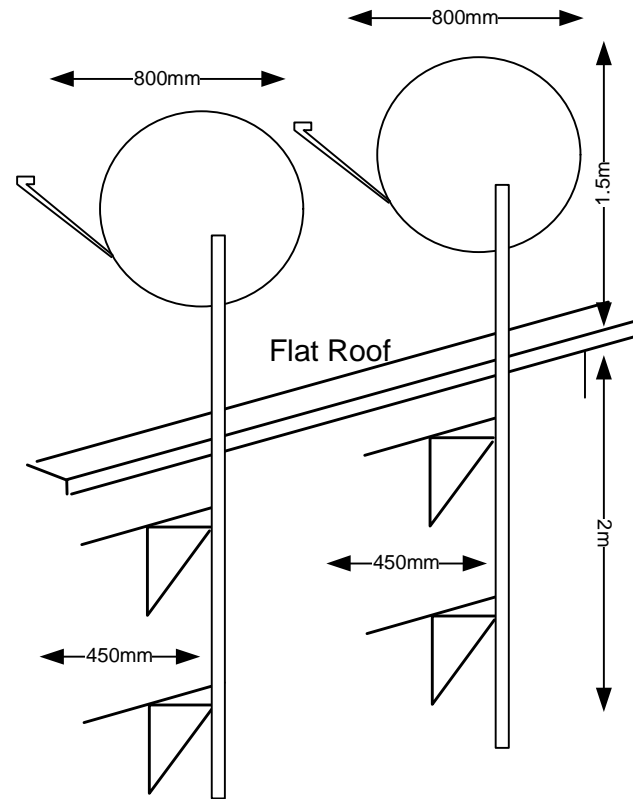
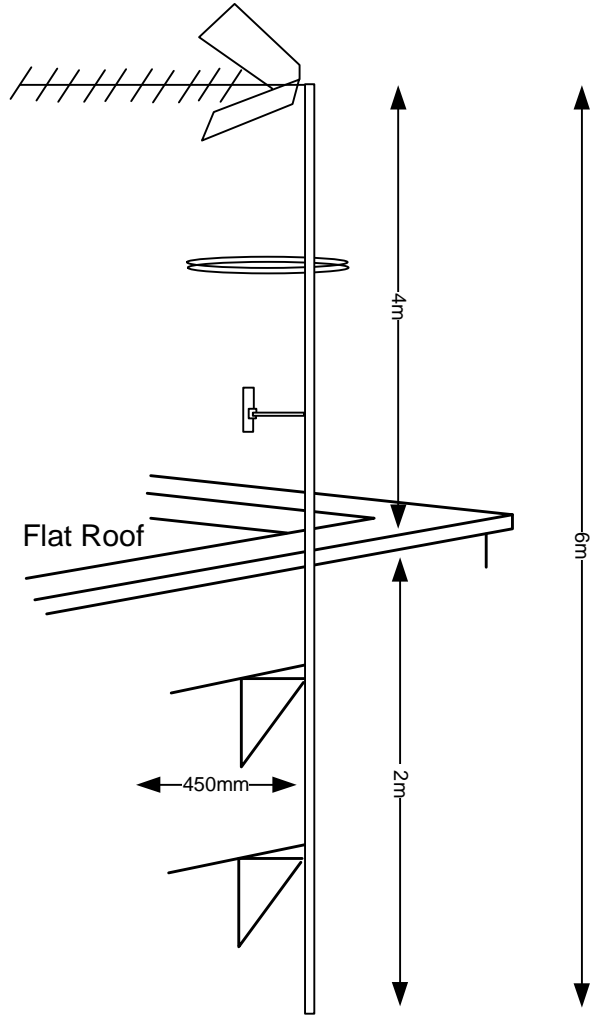
Please consider the environment before printing this document – Recycle Wherever Possible



Drawing No.	B13038/10	Site Address:	20-48 Millman Street, London, WC1N 3EQ		
Date:	31 st Jan 12	Site Ref:	LBC 007.0	Surveyed By:	Chris Gibson
Number of Points:	49	System Type	9Wire IRS Sky Plus	Drawn By:	Tom Chesterman



11. Antenna and Dishes Measurements



Form No. SCC 013 SCC International – 1 Fieldings Road, Cheshunt, Herts, EN8 9TL, . Tel: 01992 642255. Website: www.scci.co.uk



Please consider the environment before printing this document – Recycle Wherever Possible



Drawing No.	B13038/11	Site Address:	20-48 Millman Street, London, WC1N 3EQ		
Date:	31 st Jan 12	Site Ref:	LBC 007.0	Surveyed By:	Chris Gibson
Number of Points:	49	System Type	9Wire IRS Sky Plus	Drawn By:	Tom Chesterman

