

00. INDEX

Drawing Number	Drawing Title	Description
B45214/00	Index	Index of Drawings.
B45214/01	Location Plan	Scale 1:1250 at A4.
B45214/01	Block Plan	Photo of site from above
B45214/02	Roof Plan	Drawing of block from above, showing equipment positions.
B45214/03	Roof Elevation	Description and location of the antenna, dishes and Main Cabinet + mounting and measurements
B45214/04	North East Elevation	Description of Cable routes, loom sizes and entry points.
B45214/05	Existing Equipments	Description, location and view of the existing equipment on site before install.
B45214/06	Antenna, Dish Sizes & Typical Mounting Heights	Sketch of the Antenna and Dishes + mounting, position and height.

Form No. SCC 013 SCC International – 1 Fieldings Road, Cheshunt, Herts, EN8 9TL, . Tel: 01992 642255. Website: www.scci.co.uk



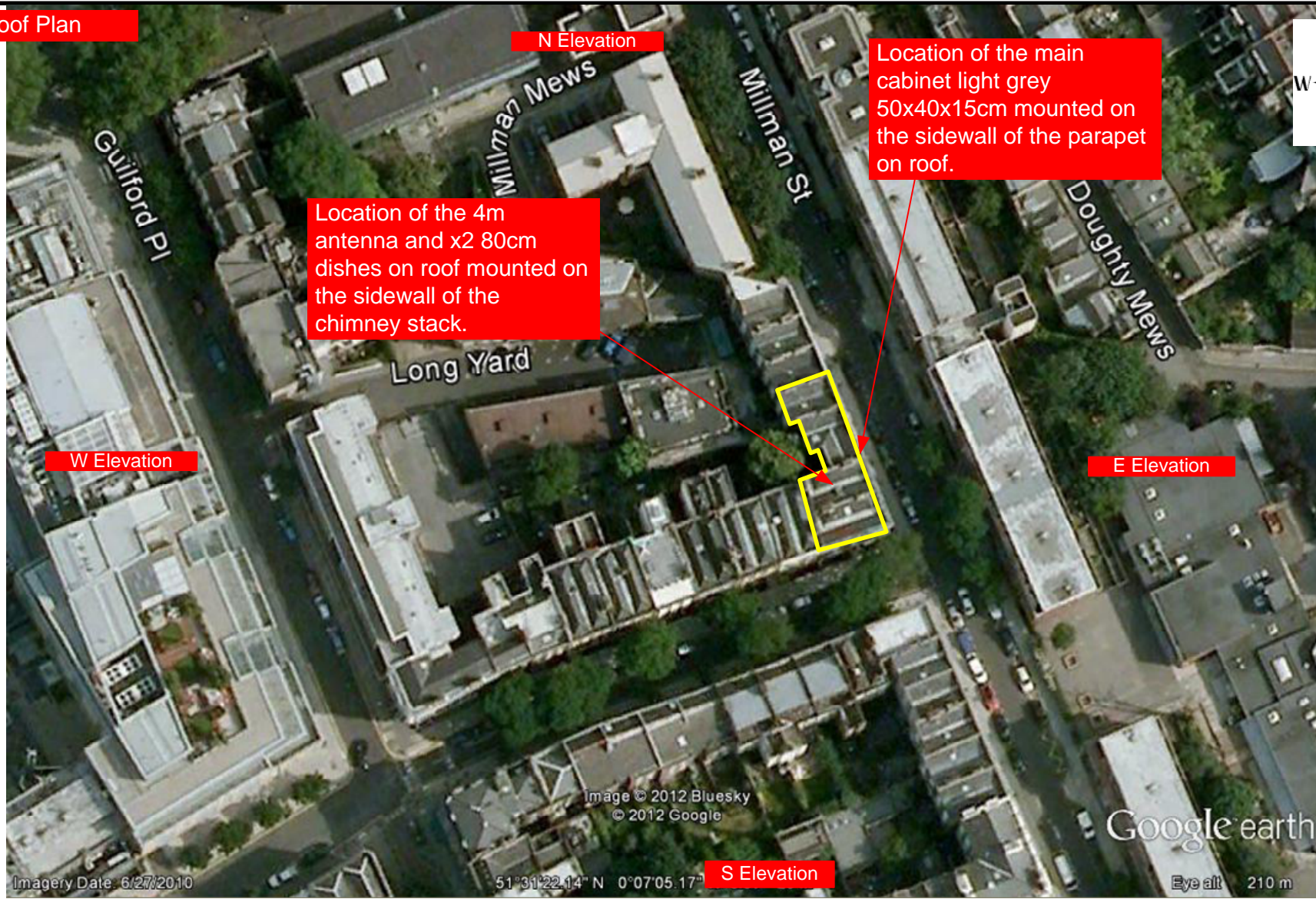
Please consider the environment before printing this document – Recycle Wherever Possible



Drawing No.	B45214/00	Site Address:	1-3 MILLMAN STREET, LONDON WC1N 3EA		
Date:	02 Feb 2012	Site Ref:	LBC 0850.0	Surveyed By:	G. Henebery
Number of Points:	5	System Type	9Wire IRS Sky Plus	Drawn By:	W. Kisala



03. Roof Plan



Form No. SCC 013 SCC International – 1 Fieldings Road, Cheshunt, Herts, EN8 9TL, . Tel: 01992 642255. Website: www.scci.co.uk

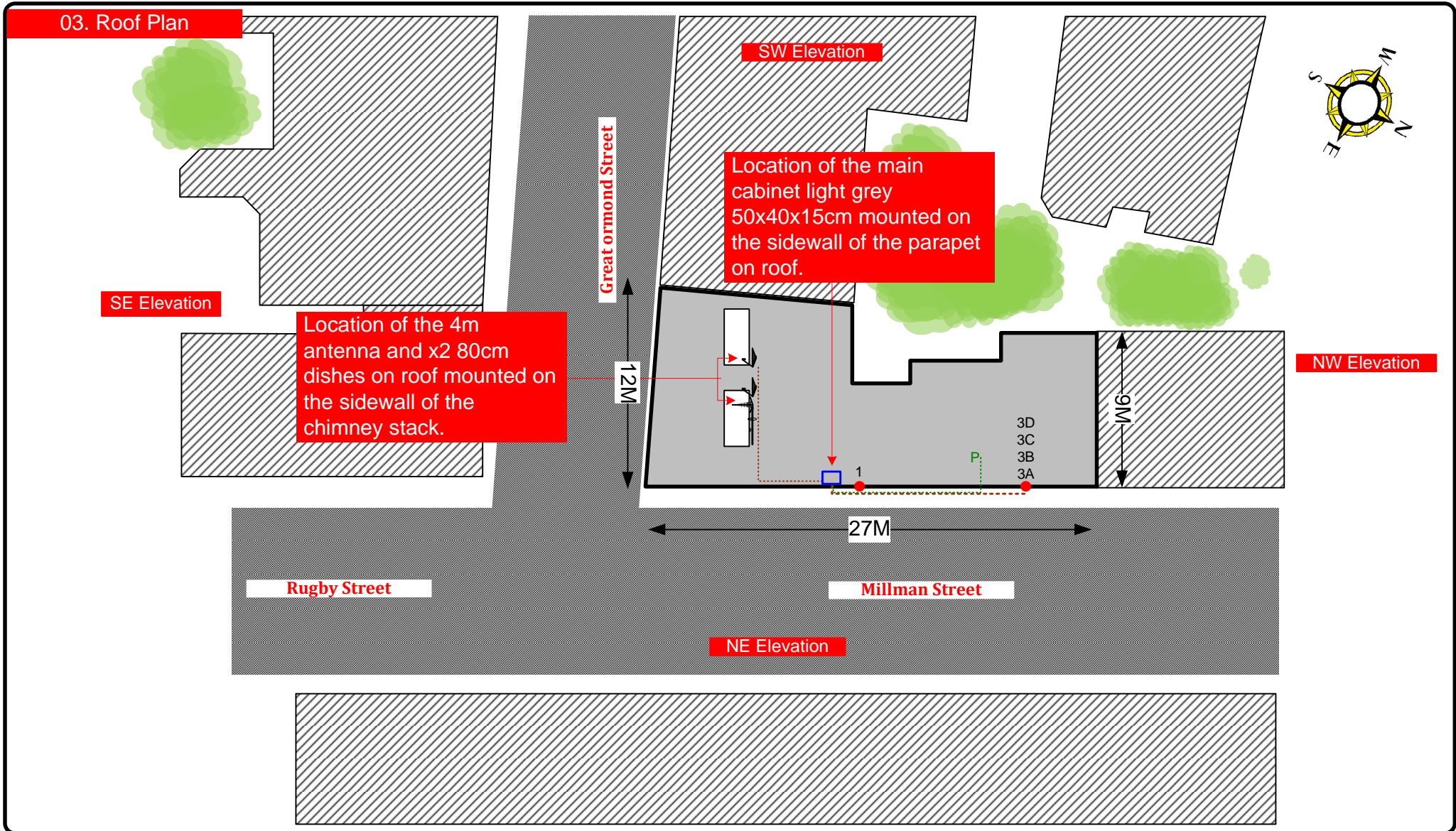


Please consider the environment before printing this document – Recycle Wherever Possible



Drawing No.	B45214/02	Site Address:	1-3 MILLMAN STREET, LONDON WC1N 3EA		
Date:	02 Feb 2012	Site Ref:	LBC 0850.0	Surveyed By:	G. Henebery
Number of Points:	5	System Type	9Wire IRS Sky Plus	Drawn By:	W. Kisala





Form No. SCC013 SCC International – 1 Fieldings Road, Cheshunt, Herts, EN8 9TL, . Tel: 01992 642255. Website: www.scci.co.uk



Please consider the environment before printing this document – Recycle Wherever Possible



Drawing No. B45214/02

Site Address: 1-3 MILLMAN STREET, LONDON WC1N 3EA

Date: 02 Feb 2012

Site Ref: LBC 0850.0

Surveyed By: G. Henebery

Number of Points: 5

System Type: 9Wire IRS Sky Plus

Drawn By: W. Kisala



Each property will have two cables to lounge position.

Cable Harness sizes

2-4 cables = 15mm

6-8 cables = 20mm

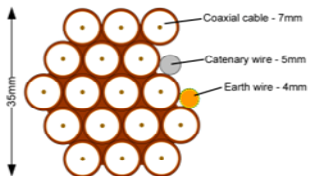
10-14 cables = 30mm

16-18 Cables = 35mm

20 cables = 40mm

40 cables = 65mm

60 cables = 90mm



Typical loom for 16 coaxial cable + 1 earth wire, + 1 catenary wire

04. Roof Elevation.



Antenna and Main cabinet (Light grey 50x40x10.5cm) will be installed on roof on the the sidewall of the parapet. Using lashing kits.

4m antenna and x2 80cm Dishes to be installed on the sidewall of the chimney stacks on roof. Dishes Mounted on 2 pole of 1.5m each using wall bracket.



Drawing No.	B45214/03	Site Address:	1-3 MILLMAN STREET, LONDON WC1N 3EA		
Date:	02 Feb 2012	Site Ref:	LBC 0850.0	Surveyed By:	G. Henebery
Number of Points:	5	System Type	9Wire IRS Sky Plus	Drawn By:	W. Kisala



Each property will have two cables to lounge position.

Cable Harness sizes

2-4 cables = 15mm

6-8 cables = 20mm

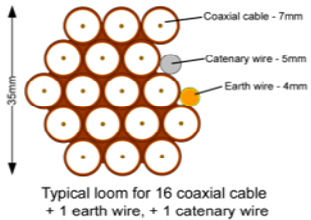
10-14 cables = 30mm

16-18 Cables = 35mm

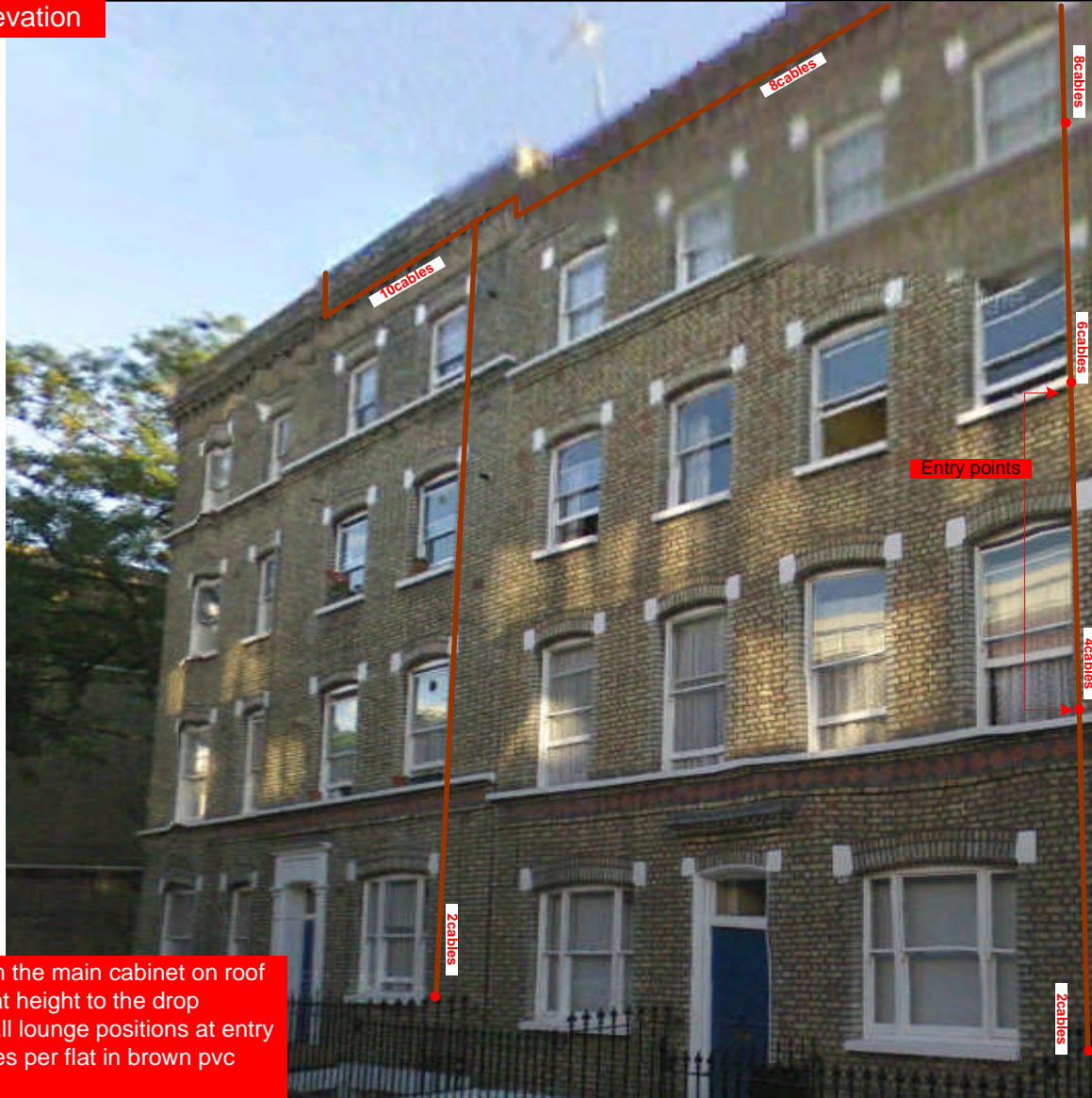
20 cables = 40mm

40 cables = 65mm

60 cables = 90mm



05. N. East Elevation



Cables to run from the main cabinet on roof then horizontally at height to the drop vertically to feed all lounge positions at entry points with 2 cables per flat in brown pvc cables

Form No. SCC 013 SCC International – 1 Fieldings Road, Cheshunt, Herts, EN8 9TL, . Tel: 01992 642255. Website: www.scci.co.uk

Please consider the environment before printing this document – Recycle Wherever Possible

Drawing No.	B45214/04	Site Address:	1-3 MILLMAN STREET, LONDON WC1N 3EA		
Date:	02 Feb 2012	Site Ref:	LBC 0850.0	Surveyed By:	G. Henebery
Number of Points:	5	System Type	9Wire IRS Sky Plus	Drawn By:	W. Kisala



Each property will have two cables to lounge position.

Cable Harness sizes

2-4 cables = 15mm

6-8 cables = 20mm

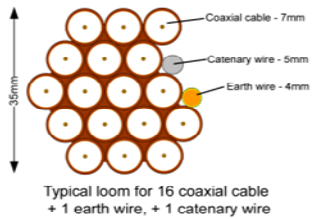
10-14 cables = 30mm

16-18 Cables = 35mm

20 cables = 40mm

40 cables = 65mm

60 cables = 90mm



06. Existing Equipments



Form No. SCC 013 SCC International – 1 Fieldings Road, Cheshunt, Herts, EN8 9TL. . Tel: 01992 642255. Website: www.scci.co.uk

Drawing No.	B45214/05	Site Address:	1-3 MILLMAN STREET, LONDON WC1N 3EA		
Date:	02 Feb 2012	Site Ref:	LBC 0850.0	Surveyed By:	G. Henebery
Number of Points:	5	System Type	9Wire IRS Sky Plus	Drawn By:	W. Kisala



Please consider the environment before printing this document – Recycle Wherever Possible

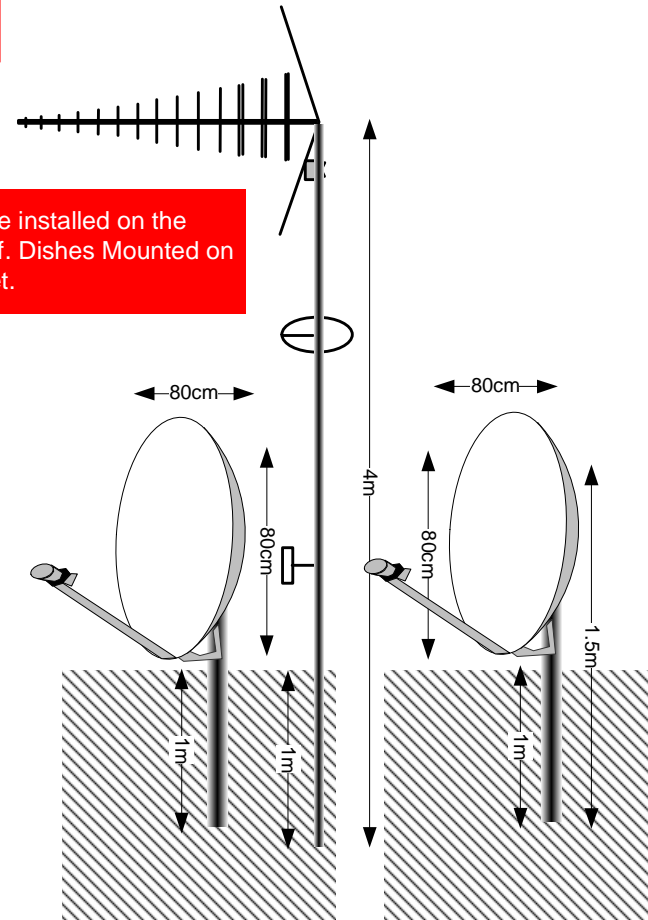
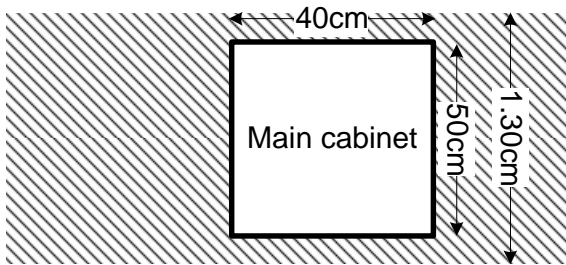


07. Antenna and Dishes Measurements

Digital TV,
FM & DAB Radio
Aerials

4m antenna and x2 80cm Dishes to be installed on the sidewall of the chimney stacks on roof. Dishes Mounted on 2 pole of 1.5m each using wall bracket.

Antenna and Main cab (Light grey 50x40x10.5cm) will be installed on roof on the the sidewall of the parapet. Using lashing kits.



Form No. SCC 013 SCC International – 1 Fieldings Road, Cheshunt, Herts, EN8 9TL, . Tel: 01992 642255. Website: www.scci.co.uk



Please consider the environment before printing this document – Recycle Wherever Possible



Drawing No.	B45214/06	Site Address:	1-3 MILLMAN STREET, LONDON WC1N 3EA	
Date:	02 Feb 2012	Site Ref:	LBC 0850.0	Surveyed By:
Number of Points:	5	System Type	9Wire IRS Sky Plus	Drawn By:
				W. Kisala

