

Site 15-17 Macklin Street, London, WC2B 5NG

Client Durley Investment Corporation

Engineer Price and Myers

Job Number
J11081

Sheet
2/12



View of the findings encountered in Trial Pit No 2, looking east (21/04/2011)



Geotechnical &
Environmental
Associates

Tythenhanger House
Coursers Road
St Albans
Herts AL4 0PG

Site

15-17 Macklin Street, London, WC2B 5NG

Trial Pit
Number

3

Excavation Method
Manual

Dimensions
800 x 1400 x 3100

Ground Level (mOD)

Client
Durley Investment Corporation

Job
Number
J11081

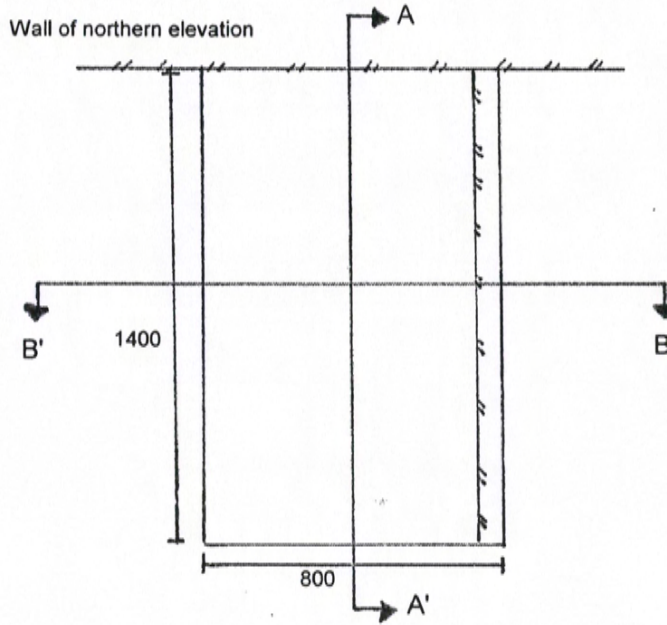
Location

Dates
19/05/2011

Engineer
Price & Myers

Sheet
1/3

PLAN



Remarks:
All dimensions in millimetres

Scale:
1:20

Logged by:
ML

Excavation Method
Manual

Dimensions
800 x 1400 x 3100

Ground Level (mOD)

Client
Durley Investment Corporation

Job Number
J11081

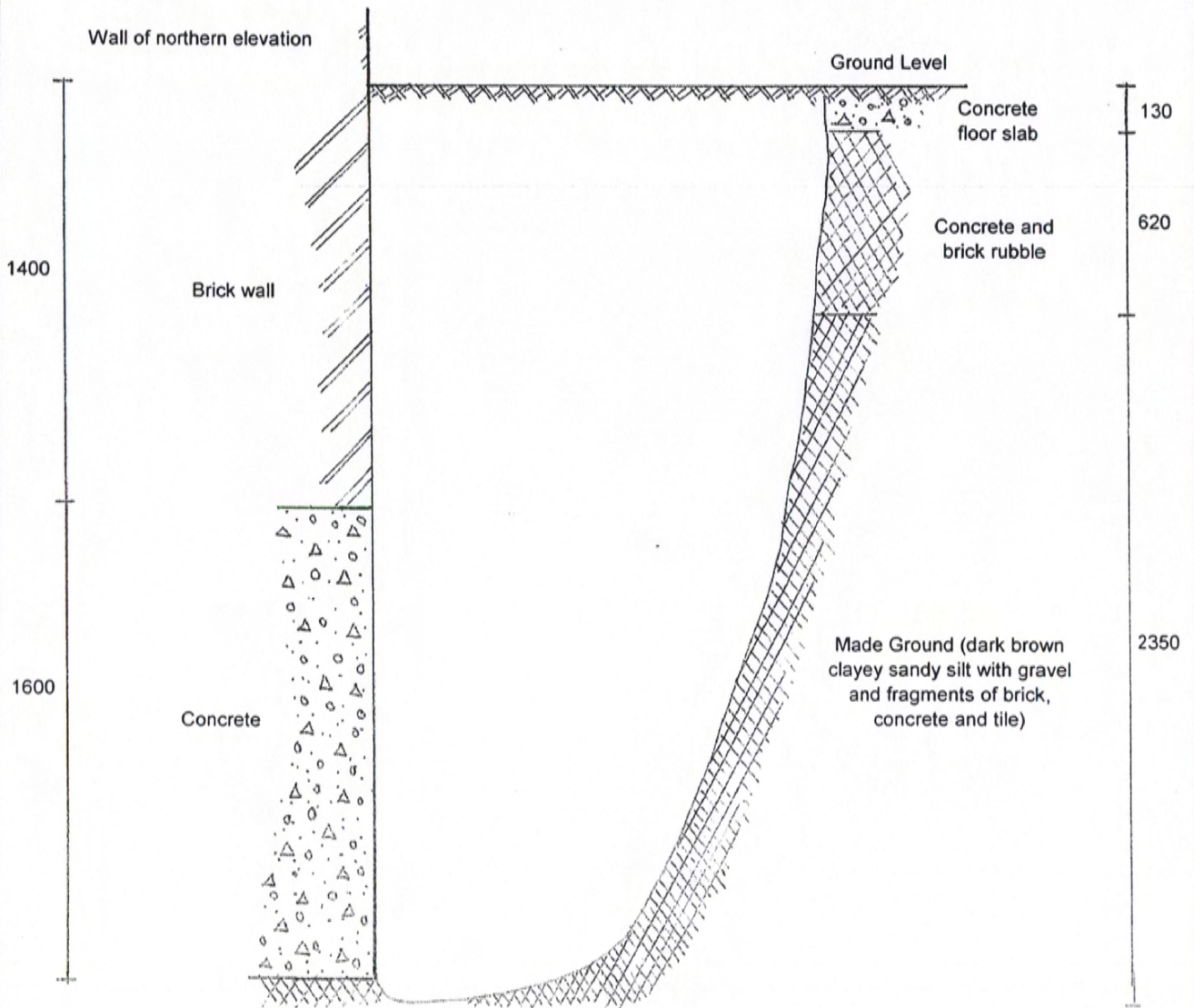
Location

Dates
19/05/2011

Engineer
Price & Myers

Sheet
2/3

SECTION A - A'



Remarks:
All dimensions in millimetres

Scale:
1:20

Logged by:
ML



Geotechnical & Environmental Associates

Tythenhanger House
Coursers Road
St Albans
Herts AL4 0PG

Site

15-17 Macklin Street, London, WC2B 5NG

Trial Pit Number

3

Excavation Method
Manual

Dimensions

800 x 1400 x 3100

Ground Level (mOD)

Client

Durley Investment Corporation

Job

Number

J11081

Location

Dates

19/05/2011

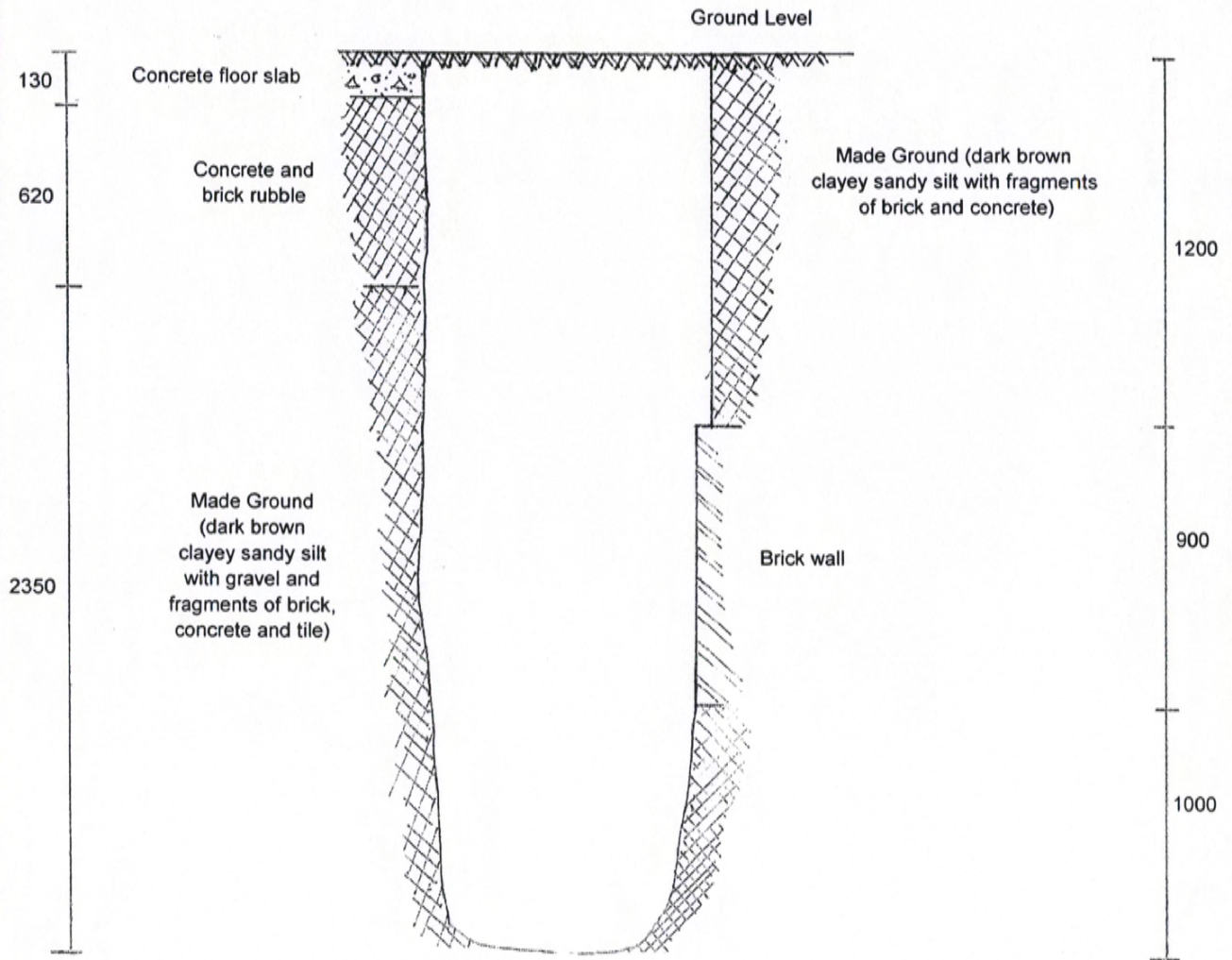
Engineer

Price and Myers

Sheet

3/3

SECTION B - B'



Remarks:

All dimensions in millimetres

Scale:

1:20

Logged by:

ML

Site 15-17 Macklin Street, London, WC2B 5NG

Client Durley Investment Corporation

Engineer Price and Myers

Job Number
J11081
Sheet
3/12



View of the footings in Trial Pit No 3, looking north (19/05/2011)