

00. INDEX

Drawing Number	Drawing Title	Description
B13012/00	Index	Index of Drawings.
B13012/01	Location Plan	Scale 1:1250 at A4.
B13012/02	Roof Plan	Drawing of block from above, showing equipment positions.
B13012/03	Roof Elevation 1	Description and location of the antenna, dishes and Main Cabinet + mounting and measurements
B13012/04	Roof Elevation 2	Description of Cable routes, loom sizes and entry points
B13012/05	Internal View	Description of cables routes and trunking to entry points
B13012/06	Existing Equipments	Description, location and view of the existing equipment on site before install.
B13012/07	Antenna, Dish Sizes & Typical Mounting Heights	Sketch of the Antenna and Dishes + mounting, position and height.

Form No. SCC 013 SCC International – 1 Fieldings Road, Cheshunt, Herts, EN8 9TL, . Tel: 01992 642255. Website: www.scci.co.uk



Please consider the environment before printing this document – Recycle Wherever Possible

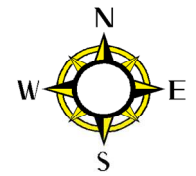


Drawing No.	B13012/00	Site Address:	1-10 COUNTY HOUSE, LONDON W1T 6AA		
Date:	25 Jan 2012	Site Ref:	LBC 0733.0	Surveyed By:	G. Henebery
Number of Points:	10	System Type	9Wire IRS Sky Plus	Drawn By:	W. Kisala



02. Roof Plan

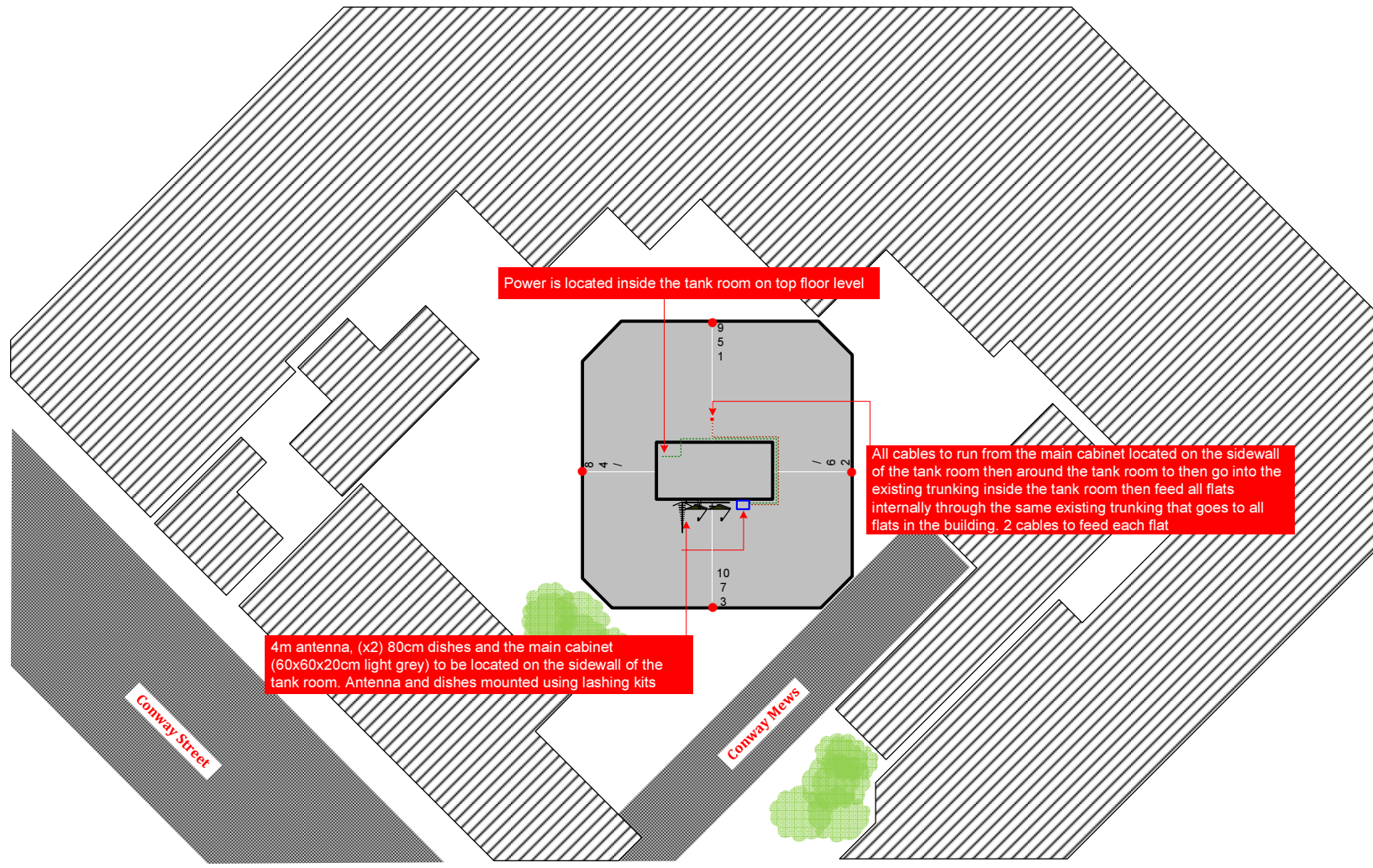
N Elevation



W Elevation

E Elevation

S Elevation



Power is located inside the tank room on top floor level

All cables to run from the main cabinet located on the sidewall of the tank room then around the tank room to then go into the existing trunking inside the tank room then feed all flats internally through the same existing trunking that goes to all flats in the building. 2 cables to feed each flat

4m antenna, (x2) 80cm dishes and the main cabinet (60x60x20cm light grey) to be located on the sidewall of the tank room. Antenna and dishes mounted using lashing kits

Form No. SCC 013 SCC International – 1 Fieldings Road, Cheshunt, Herts, EN8 9TL, . Tel: 01992 642255. Website: www.scci.co.uk



Please consider the environment before printing this document – Recycle Wherever Possible



Drawing No.	B13012/03	Site Address:	1-10 COUNTY HOUSE, LONDON W1T 6AA		
Date:	25 Jan 2012	Site Ref:	LBC 0733.0	Surveyed By:	G. Henebery
Number of Points:	10	System Type	9Wire IRS Sky Plus	Drawn By:	W. Kisala



Each property will have two cables to lounge position.

Cable Harness sizes

2-4 cables = 15mm

6-8 cables = 20mm

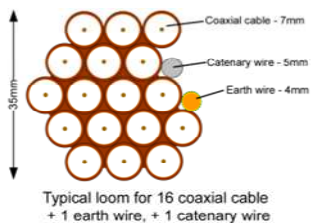
10-14 cables = 30mm

16-18 Cables = 35mm

20 cables = 40mm

40 cables = 65mm

60 cables = 90mm



03. Roof Elevation 1



Antenna, dishes (x2 80cm) and Main cab (Light grey 60cmx60cmx20cm) will be installed on the sidewall of the tank room on roof. Antenna will be 4m pole. All mounted using lashing kits.

Form No. SCC 013 SCC International – 1 Fieldings Road, Cheshunt, Herts, EN8 9TL, . Tel: 01992 642255. Website: www.scci.co.uk



Please consider the environment before printing this document – Recycle Wherever Possible



Drawing No.	B13012/03	Site Address:	1-10 COUNTY HOUSE, LONDON W1T 6AA
Date:	25 Jan 2012	Site Ref:	LBC 0733.0
Number of Points:	10	System Type	9Wire IRS Sky Plus
		Surveyed By:	G. Henebery
		Drawn By:	W. Kisala



Each property will have two cables to lounge position.

Cable Harness sizes

2-4 cables = 15mm

6-8 cables = 20mm

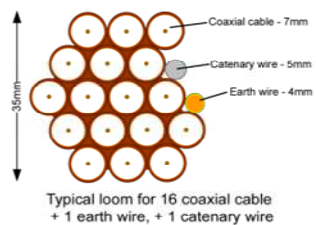
10-14 cables = 30mm

16-18 Cables = 35mm

20 cables = 40mm

40 cables = 65mm

60 cables = 90mm



04. Roof Elevation 2



20 cables to exit the main cabinet located on the tank room wall then go through the riser down to trunking then shared with 2 cables each for all flat on each floor. Note that the trunking is an existing one and already been used for the existing system

Form No. SCC 013 SCC International – 1 Fieldings Road, Cheshunt, Herts, EN8 9TL, . Tel: 01992 642255. Website: www.scci.co.uk



Please consider the environment before printing this document – Recycle Wherever Possible



Drawing No.	B13012/04	Site Address:	1-10 COUNTY HOUSE, LONDON W1T 6AA
Date:	25 Jan 2012	Site Ref:	LBC 0733.0
Number of Points:	10	System Type	9Wire IRS Sky Plus
		Surveyed By:	G. Henebery
		Drawn By:	W. Kisala



Each property will have two cables to lounge position.

Cable Harness sizes

2-4 cables = 15mm

6-8 cables = 20mm

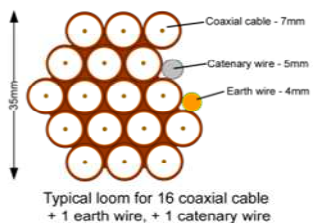
10-14 cables = 30mm

16-18 Cables = 35mm

20 cables = 40mm

40 cables = 65mm

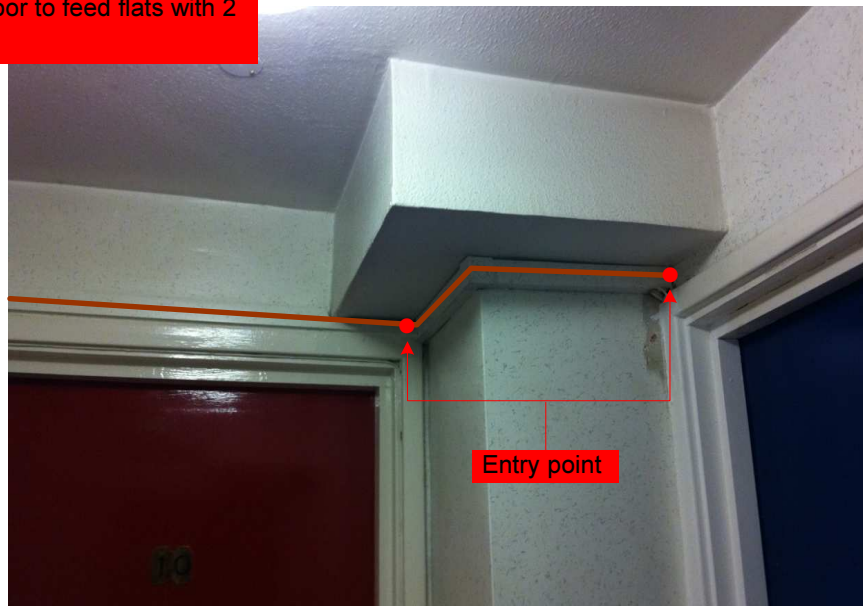
60 cables = 90mm



05. Internal View



All cables to run internally from the roof riser then shared in each floor to feed flats with 2 cables per flat.



Entry point

Form No. SCC 013 SCC International – 1 Fieldings Road, Cheshunt, Herts, EN8 9TL. Tel: 01992 642255. Website: www.scci.co.uk

Drawing No.	B13012/05	Site Address:	1-10 COUNTY HOUSE, LONDON W1T 6AA	
Date:	25 Jan 2012	Site Ref:	LBC 0733.0	Surveyed By: G. Henebery
Number of Points:	10	System Type:	9Wire IRS Sky Plus	Drawn By: W. Kisala



Please consider the environment before printing this document – Recycle Wherever Possible



Each property will have two cables to lounge position.

Cable Harness sizes

2-4 cables = 15mm

6-8 cables = 20mm

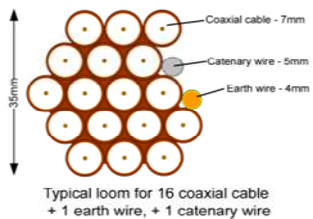
10-14 cables = 30mm

16-18 Cables = 35mm

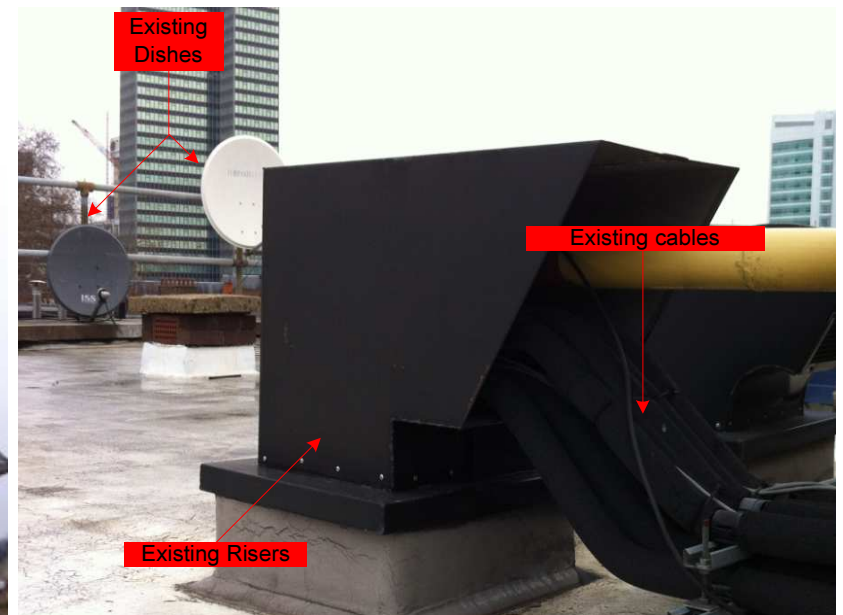
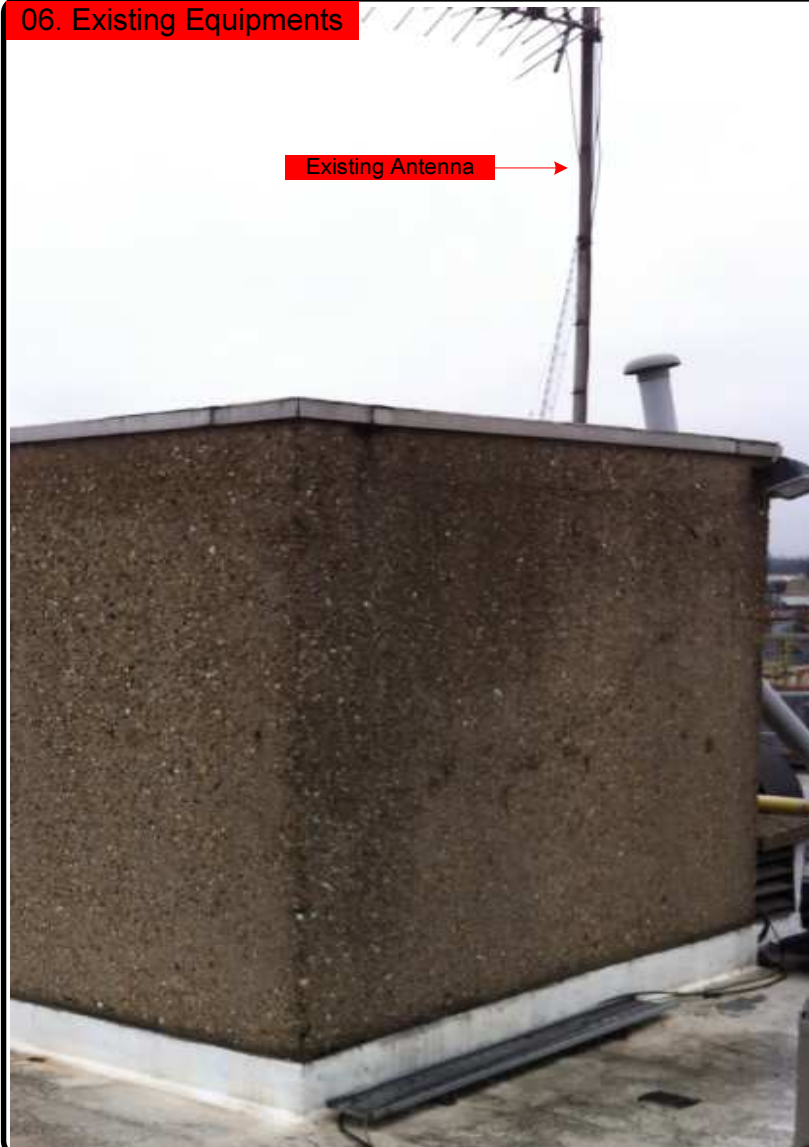
20 cables = 40mm

40 cables = 65mm

60 cables = 90mm



06. Existing Equipments



Form No. SCC 013 SCC International – 1 Fieldings Road, Cheshunt, Herts, EN8 9TL, . Tel: 01992 642255. Website: www.scci.co.uk

Drawing No.	B13012/06	Site Address:	1-10 COUNTY HOUSE, LONDON W1T 6AA		
Date:	25 Jan 2012	Site Ref:	LBC 0733.0	Surveyed By:	G. Henebery
Number of Points:	10	System Type	9Wire IRS Sky Plus	Drawn By:	W. Kisala



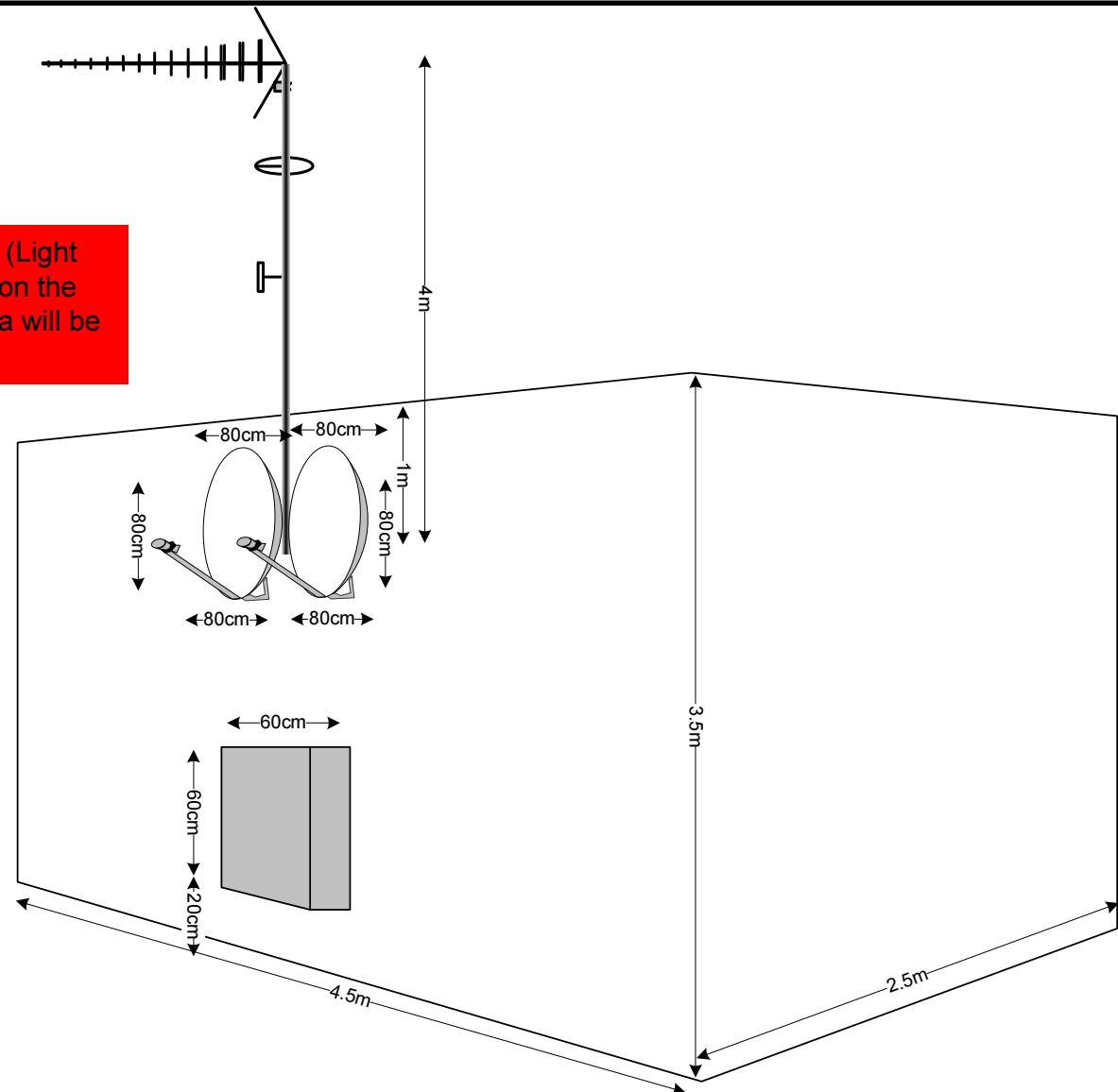
Please consider the environment before printing this document – Recycle Wherever Possible



07. Antenna and Dishes Measurements

Digital TV,
FM & DAB Radio
Aerials

Antenna, dishes (x2 80cm) and Main cab (Light grey 60cmx60cmx20cm) will be installed on the sidewall of the tank room on roof. Antenna will be 4m pole. All mounted using lashing kits.



Form No. SCC 013 SCC International – 1 Fieldings Road, Cheshunt, Herts, EN8 9TL, . Tel: 01992 642255. Website: www.scci.co.uk



Please consider the environment before printing this document – Recycle Wherever Possible



Drawing No.	B13012/07	Site Address:	1-10 COUNTY HOUSE, LONDON W1T 6AA
Date:	25 Jan 2012	Site Ref:	LBC 0733.0
Number of Points:	10	System Type	9Wire IRS Sky Plus
		Drawn By:	W. Kisala

