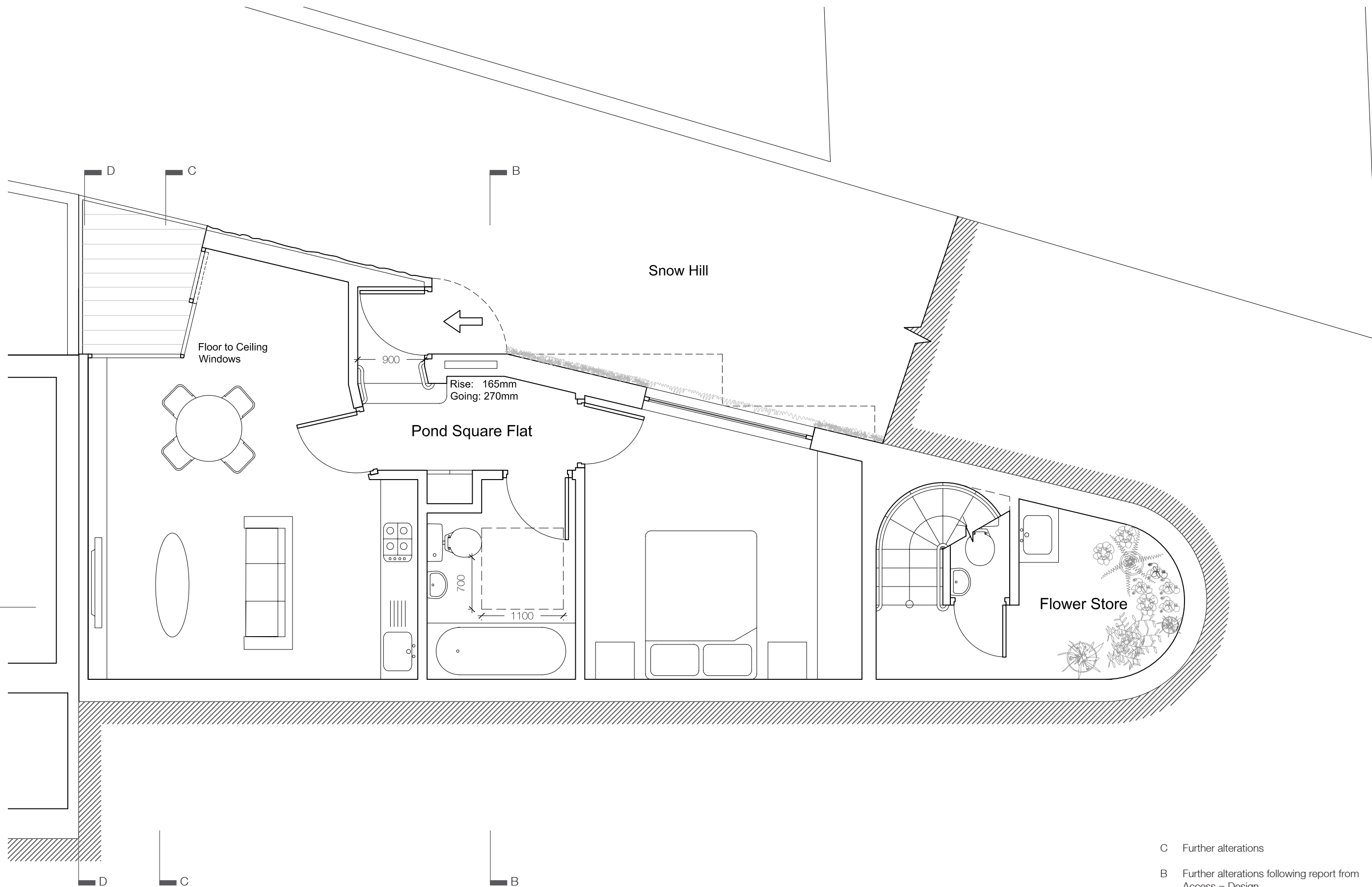




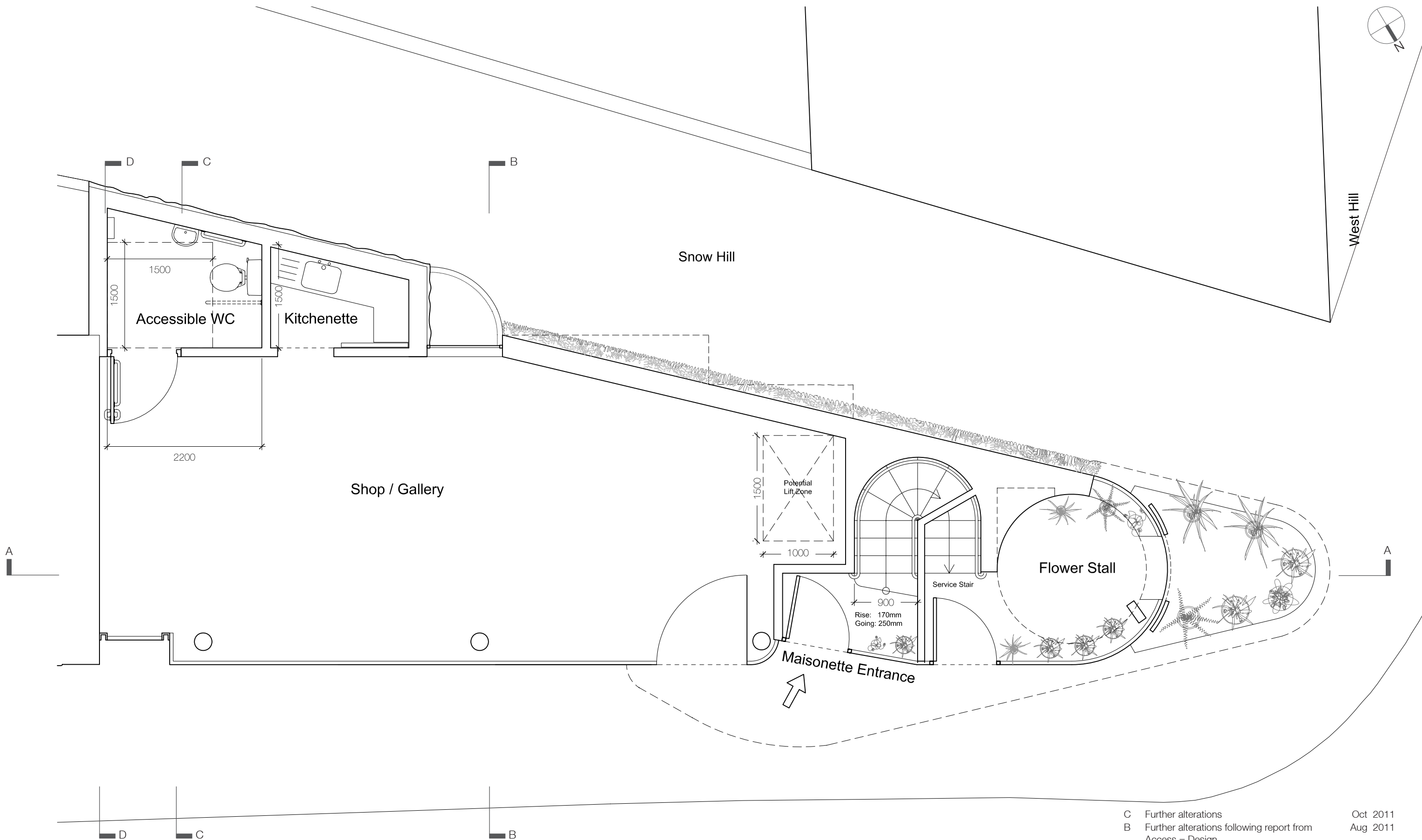
West Hill



C	Further alterations	Oct 2011
B	Further alterations following report from Access = Design	Aug 2011
A	Alterations to Lifetime Homes Standards	July 2011

69 Highgate High Street, London
P010 Pond Square Level Plan
1:50 @ A3 July 2010
Birds Portsmouth Russum Architects





C	Further alterations	Oct 2011
B	Further alterations following report from Access = Design	Aug 2011
A	Alterations to Lifetime Homes Standards	July 2011

69 Highgate High Street, London

P011 Highgate High Street Level Plan

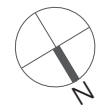
1:50 @ A3 July 2010

Birds Portchmouth Russum Architects



Note on potential stairlift:

The Stannah Type 260 'Starla' stairlift can be fitted to curved or even spiral staircases. The minimum width required for the operation of the stairlift is 679mm. The proposed stair is 900mm.



West Hill

Snow Hill

High Street Maisonette

Void

Rise: 170mm
Going: 250mm

C	Further alterations	Oct 2011
B	Further alterations following report from Access = Design	Aug 2011
A	Alterations to Lifetime Homes Standards	July 2011

69 Highgate High Street, London

P012 First Floor Plan

1:50 @ A3 July 2010

Birds Portchmouth Russum Architects



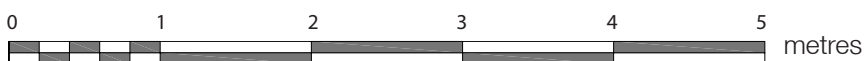
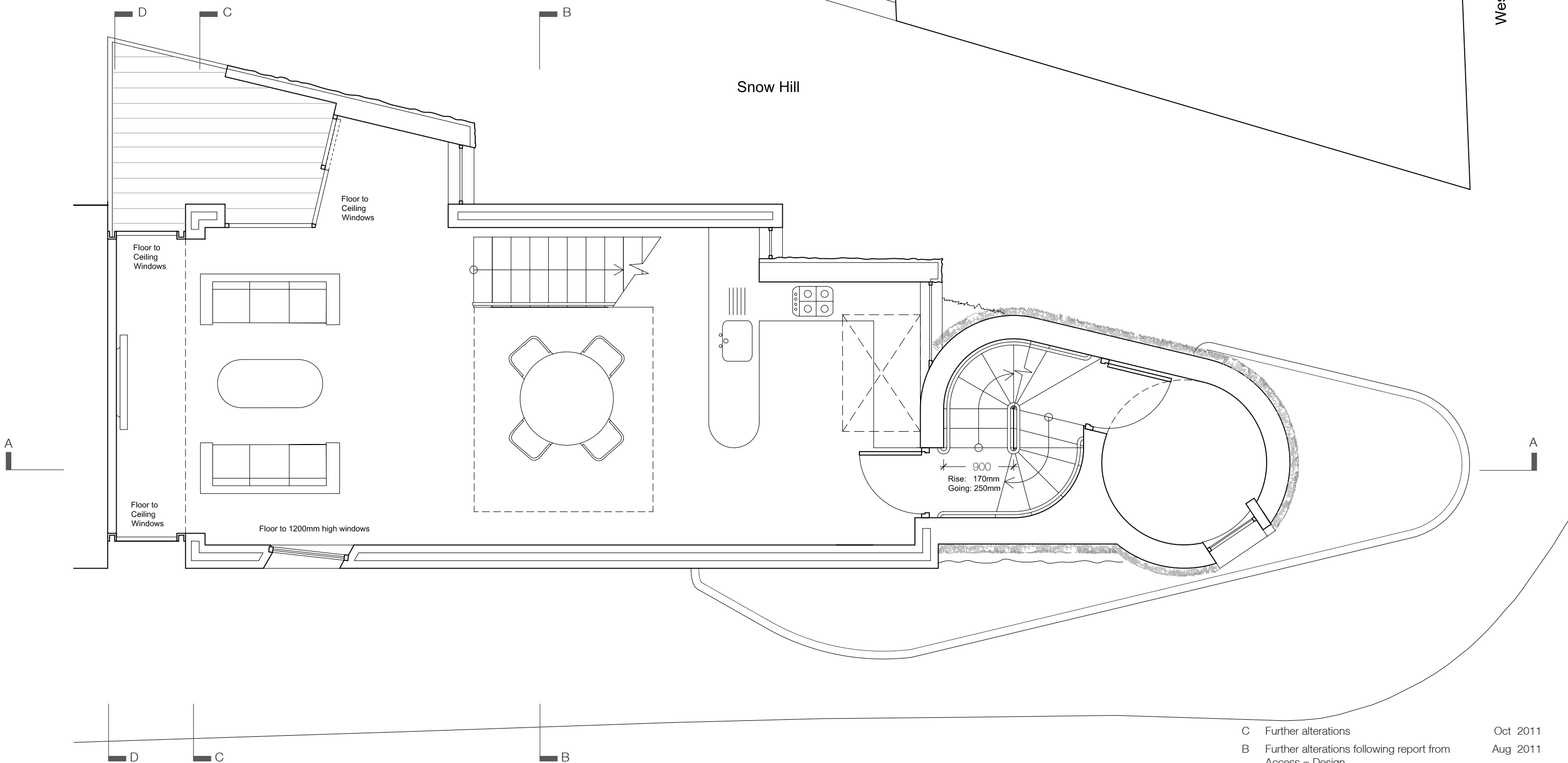
Highgate High St

0 1 2 3 4 5 metres



West Hill

Snow Hill



Highgate High St

C	Further alterations	Oct 2011
B	Further alterations following report from Access = Design	Aug 2011
A	Alterations to Lifetime Homes Standards	July 2011

69 Highgate High Street, London

P013 Second Floor Plan

1:50 @ A3 July 2010

Birds Portchmouth Russum Architects





West Hill

Snow Hill

Highgate High St

C	Further alterations	Oct 2011
B	Further alterations following report from Access = Design	Aug 2011
A	Alterations to Lifetime Homes Standards	July 2011

69 Highgate High Street, London

P014 Upper Gallery Plan

1:50 @ A3 July 2010

Birds Portchmouth Russum Architects

