


Drawing Number	Drawing Title	Description
E014025/00	Index	Index of Drawings.
E014025/01	Location Plan	Scale 1:1250 at A4
E014025/02	Block Plan	Photo of Site from above.
E014025/03	Roof Plan	Drawing of block from above, showing equipment positions.
E014025/04	S Elevation 1	Location of the Main cabinet, Aerial and Dishes
E014025/05	S Elevation 2	Side entrance front face of the building
E014025/06	North  Elevations	Rear View description of drop Cables and looms per flats
E014025/07	Antenna, Dish Sizes & Typical Mounting Heights	Measurement of Dishes mounting position / height.



Drawing No.

E014025/00

Site Address:

6-10 GAISFORD STREET, CAMDEN LONDON NW5 2ED

Date:

21/09/2011

Site Ref:

LBC 0446.0

Surveyed By:

G. Henebery

Number of Points:

5

System Type

9Wire IRS Sky Plus

Drawn By:

W. Kisala



02. Block Plan



N Elevation

E Elevation

W Elevation

S Elevation

Proposed position and location of light grey metal remote cabinet. Sized 70cmx50cm on the side wall of the storage area

Proposed position of the Antenna and Dishes located on roof mounted on a non-pen mount

Form No. SCC 013 SCC International – 1 Fieldings Road, Cheshunt, Herts, EN8 9TL, . Tel: 01992 642255. Website: www.scci.co.uk

Please consider the environment before printing this document – Recycle Wherever Possible

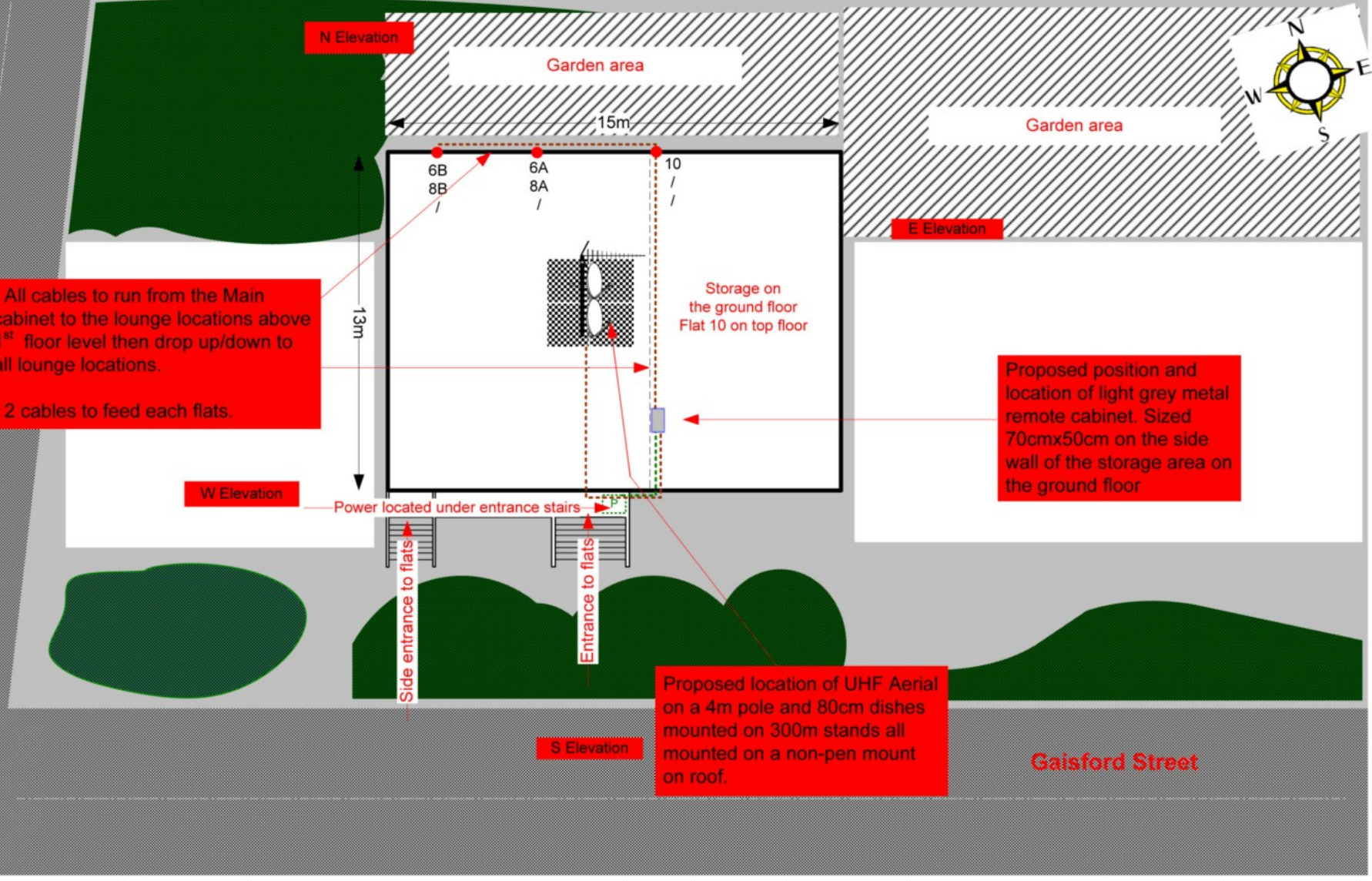
Drawing No.	E014025/02	Site Address:	6-10 GAISFORD STREET, CAMDEN LONDON NW5 2ED		
Date:	21/09/2011	Site Ref:	LBC 0446.0	Surveyed By:	G. Henebery
Number of Points:	5	System Type	9Wire IRS Sky Plus	Drawn By:	W. Kisala



03. Roof Plan

Worsley Mews

- All cables to run from the Main cabinet to the lounge locations above 1st floor level then drop up/down to all lounge locations.
 - 2 cables to feed each flats.



Form No. SCC 013 SCC International – 1 Fieldings Road, Cheshunt, Herts, EN8 9TL . Tel: 01992 642255. Website: www.scci.co.uk

Please consider the environment before printing this document – Recycle Wherever Possible

Drawing No.	E014025/03	Site Address:	6-10 GAISFORD STREET, CAMDEN LONDON NW5 2ED		
Date:	21/09/2011	Site Ref:	LBC 0446.0	Surveyed By:	G. Henebery
Number of Points:	5	System Type	9Wire IRS Sky Plus	Drawn By:	W. Kisala



Each property will have two cables to lounge position.

Cable Harness sizes

2-4 cables = 15mm

6-8 cables = 20mm

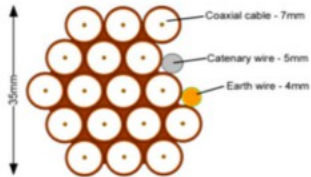
10-14 cables = 30mm

16-18 Cables = 35mm

20 cables = 40mm

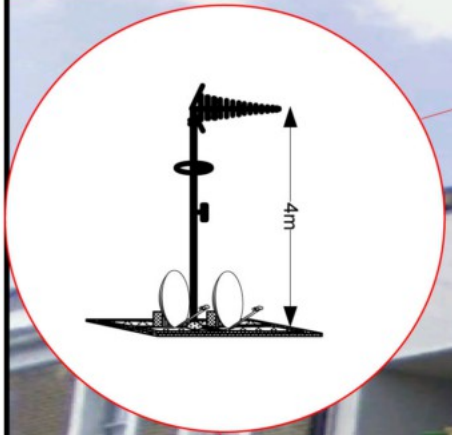
40 cables = 65mm

60 cables = 90mm



Typical loom for 16 coaxial cable + 1 earth wire, + 1 catenary wire

04.S Elevation 1.



Proposed location of UHF Aerial on a 4m pole and 80cm dishes mounted on 300mm stands all mounted on a non-pen mount on roof out of reach and non visible to public.



-Power cable
-coaxial cable
-Earth cable

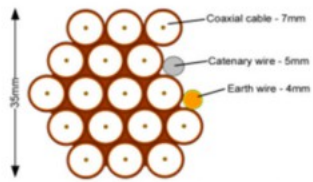
Drawing No.	E014025/04	Site Address:	6-10 GAISFORD STREET, CAMDEN LONDON NW5 2ED		
Date:	21/09/2011	Site Ref:	LBC 0446.0	Surveyed By:	G. Henebery
Number of Points:	5	System Type:	9Wire IRS Sky Plus	Drawn By:	W. Kisala



Each property will have two cables to lounge position.

Cable Harness sizes

- 2-4 cables = 15mm
- 6-8 cables = 20mm
- 10-14 cables = 30mm
- 16-18 Cables = 35mm
- 20 cables = 40mm
- 40 cables = 65mm
- 60 cables = 90mm



Typical loom for 16 coaxial cable + 1 earth wire, + 1 catenary wire

05. S Elevation 2



Side entrance to flats (front face of the building)

Form No. SCC 013 SCC International – 1 Fieldings Road, Cheshunt, Herts, EN8 9TL, . Tel: 01992 642255. Website: www.scci.co.uk

Please consider the environment before printing this document – Recycle Wherever Possible

Drawing No.	E014025/05	Site Address:	6-10 GAISFORD STREET, CAMDEN LONDON NW5 2ED		
Date:	21/09/2011	Site Ref:	LBC 0446.0	Surveyed By:	G. Henebery
Number of Points:	5	System Type	9Wire IRS Sky Plus	Drawn By:	W. Kisala



Each property will have two cables to lounge position.

Cable Harness sizes

2-4 cables = 15mm

6-8 cables = 20mm

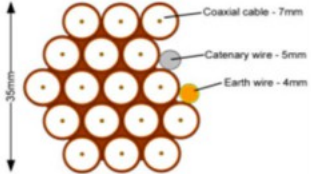
10-14 cables = 30mm

16-18 Cables = 35mm

20 cables = 40mm

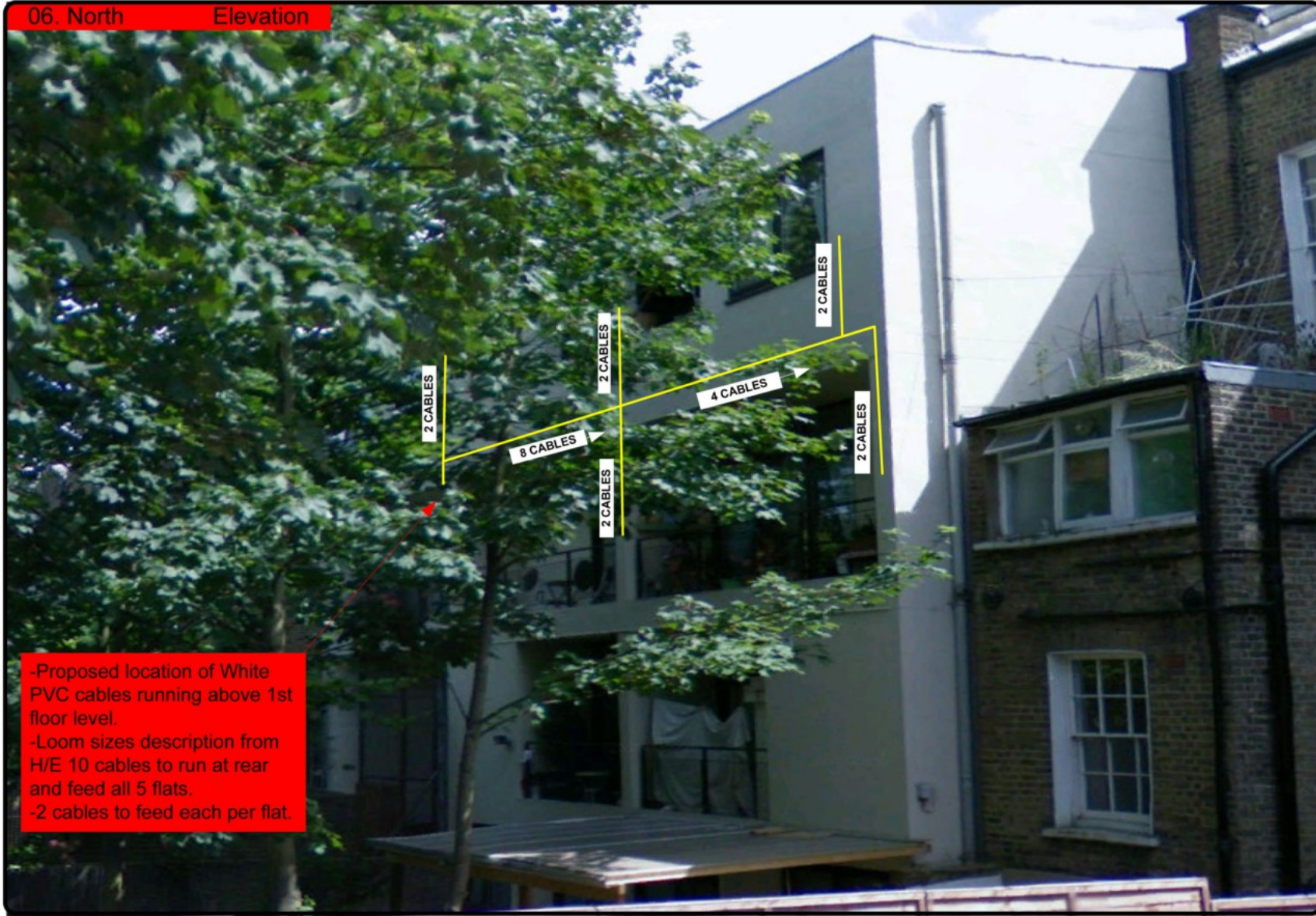
40 cables = 65mm

60 cables = 90mm



Typical loom for 16 coaxial cable + 1 earth wire, + 1 catenary wire

06. North Elevation

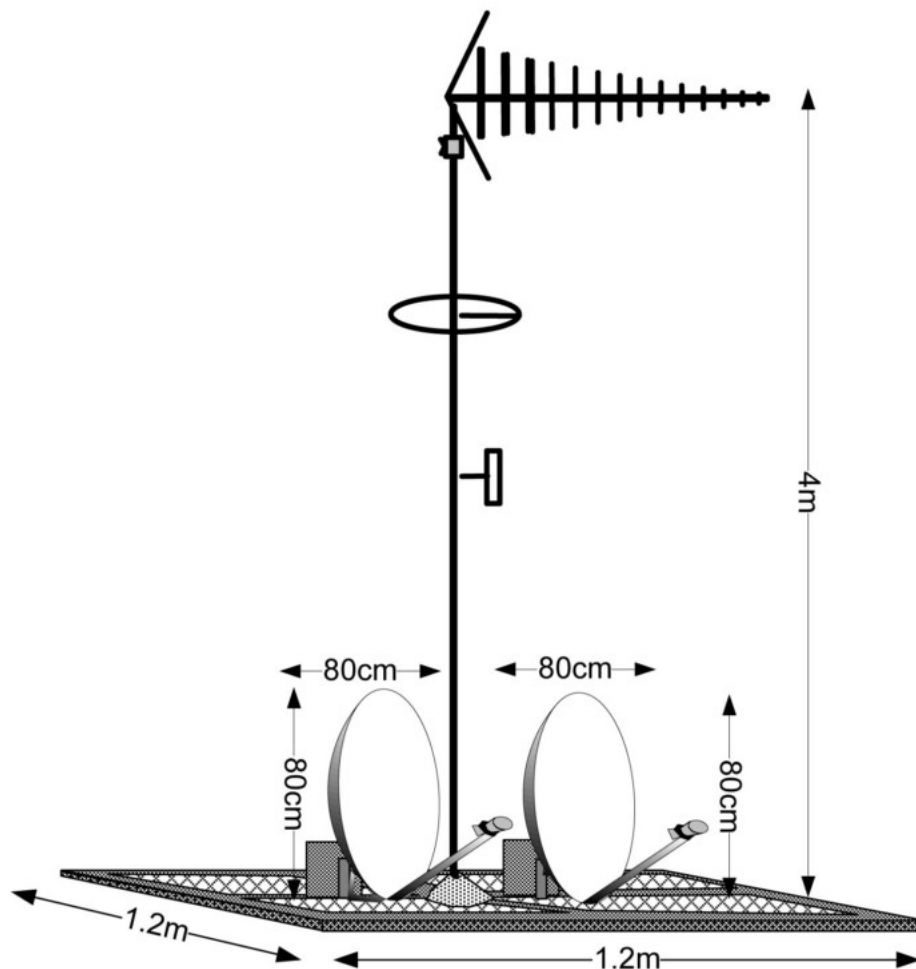


-Proposed location of White PVC cables running above 1st floor level.
 -Loom sizes description from H/E 10 cables to run at rear and feed all 5 flats.
 -2 cables to feed each per flat.

Drawing No.	E014025/06	Site Address:	6-10 GAISFORD STREET, CAMDEN LONDON NW5 2ED		
Date:	21/09/2011	Site Ref:	LBC 0446.0	Surveyed By:	G. Henebery
Number of Points:	5	System Type	9Wire IRS Sky Plus	Drawn By:	W. Kisala



07. Antenna and Dishes Measurements



Digital TV,
FM & DAB Radio
Aerials

Proposed location of UHF Aerial on a 4m pole and 80cm dishes mounted on 300cm Stands on a non-pen mount.

Form No. SCC 013 SCC International – 1 Fieldings Road, Cheshunt, Herts, EN8 9TL, . Tel: 01992 642255. Website: www.scci.co.uk

Please consider the environment before printing this document – Recycle Wherever Possible

Drawing No.	E014025/07	Site Address:	6-10 GAISFORD STREET, CAMDEN LONDON NW5 2ED		
Date:	21/09/2011	Site Ref:	LBC 0446.0	Surveyed By:	G. Henebery
Number of Points:	5	System Type	9Wire IRS Sky Plus	Drawn By:	W. Kisala

