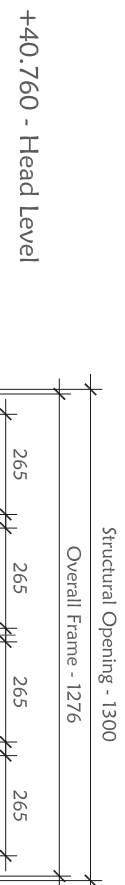


TYPE - R

QUANTITY: 1



Window reference nos:
B1/CF-W01.B1/FF-W01 (Froms one glazed curtain wall unit)

Wall finish type:
Rendered on ground floor level.
Facing brickwork above ground floor

Top hung reversible light

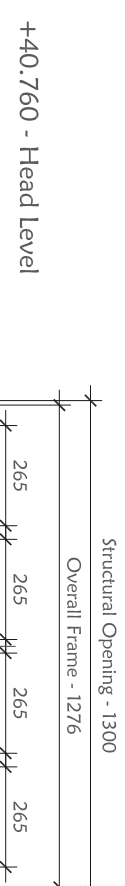
ALUMINIUM COVERED INSULATED PANEL

Sidelung projecting light

ALUMINIUM COVERED INSULATED PANEL

TYPE - S

QUANTITY: 1



Window reference nos:
B1/CF-W03.B1/FF-W11 (Froms one glazed curtain wall unit)

Wall finish type:
Rendered on ground floor level.
Facing brickwork above ground floor

Top hung reversible light

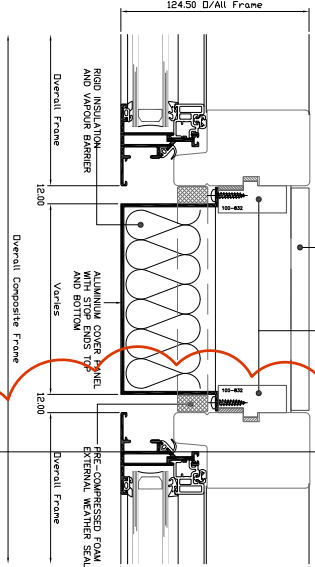
ALUMINIUM COVERED INSULATED PANEL

Sidelung projecting light

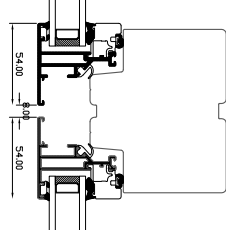
ALUMINIUM COVERED INSULATED PANEL

Notes:
To be designed to match type R in appearance but with obscured glazing

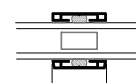
Typical aluminum panel & glazed panel junction detail



Typical mullion detail

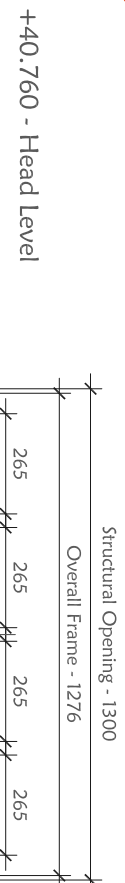


Typical glazing bar detail



TYPE - T

QUANTITY: 1



Window reference nos:
B1/CF-W01.B1/FF-W01 (Froms one glazed curtain wall unit)

Wall finish type:
Rendered on ground floor level.
Facing brickwork above ground floor

Top hung reversible light

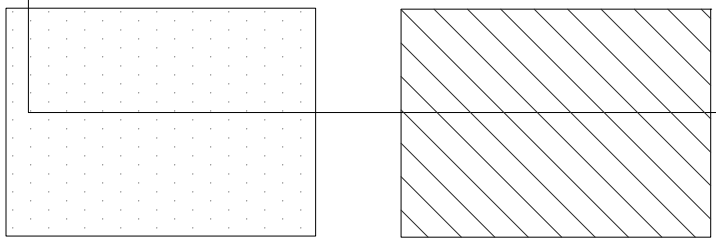
ALUMINIUM COVERED INSULATED PANEL

- GENERAL NOTES
1. Do not scale this drawing for construction purposes.
 2. All dimensions in this drawing are metric.
 3. This drawing & all other drawings & schedules/specifications, details etc relating to this product are copyright of PMA in strict conjunction with all other relevant architect's structural engineer's & service engineer's drawings, calculations, details & specifications.
 4. The contractor shall check all dimensions & setting out information on this or other documents shall be reported to the architect & seek confirmation.
 5. All proprietary products shall be used & fixed in strict accordance with manufacturer's printed recommendations, notes, specifications etc.
 6. PMA drawings stamped 'PMA FOR CONSTRUCTION' shall be used on site.

NOTES -

- 1) Glazing to be low-e double glazed powder coated aluminium window units - refer to specification for further details.
- 2) Sizes of structural opening to be checked on site prior to commencing with window manufacture.
- 3) The window frame sizes have been drawn to the same dimensions as the structural opening sizes. The window manufacturer is responsible for making allowance for the necessary tolerance between frame size and structural opening size. Refer to window jamb, sill & head details for further information and contact the Architect with any queries.
- 4) The windows drawn here represent design intent - actual design to be by window manufacturer and must be approved by the Architect prior to manufacture.
- 5) Some instances of window types may be 'handed' - please check against plans and elevations prior to manufacture and inform Architect of any discrepancies.
- 6) This drawing is to be read in conjunction with the CA elevations and plans.
- 7) Balconies / Juliet balconies have been omitted for clarity - refer to elevations.
- 8) All doors (including to balconies) will require level thresholds, to comply with building regulations part M.
- 9) Habitable rooms to have min 1/20th floor area of opening lights.
- 10) All glazing below 800mm in windows, doors and side screens to be safety glass as described in diagram 1 of approved document N. Manifestation to be used as set out in diagram 5 of approved document N.
- 11) Windows and all associated elements to achieve max U-value of 2.0W/m²K.
- 12) Kitchens and bathroom windows to have 4000mm² trickle ventilators. Window in all other habitable rooms to contain 8000mm² trickle vents.

KEY



C	05/03/2012	Jamb and Head details revised to comply with planning conditions	RS/NP
B	05/03/2012	Jamb and Head details revised to suit planning conditions	RS/NP
A	27/02/2012	Detail References Added	RS/NP
No.	Date	Description	Chk.
Revision			
Originator/Author			
pma chartered architects			
PO Box 1034, Wembley, Middlesex HA0 9GY. e: pma@pm-architects.com			
T: +44 (0) 7887 646 957. F: +44 (0) 784504www.pma-architects.com			
Client			
SARENA LTD.			

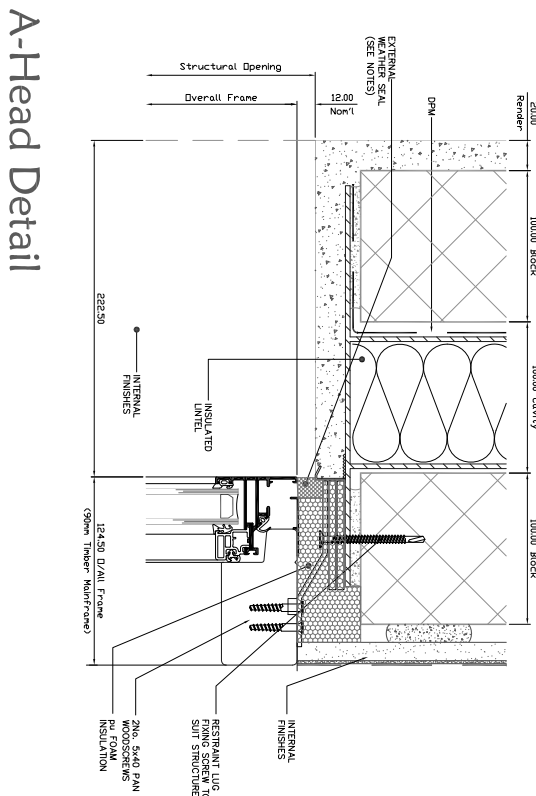
Job Title
2 DUMPTON PLACE, PRIMROSE HILL, NW1 8JB
Job Number: 02DP

Drawing Title
WINDOW SCHEDULE - B1 USE & TYPICAL DETAILS

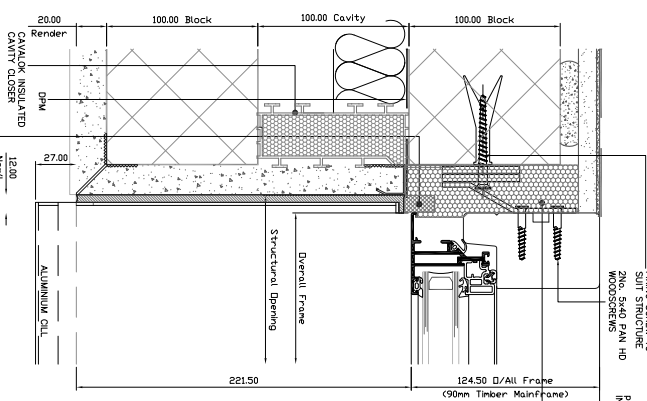
Scale	Drawn By
1:20@A1 & 1:40@A3	RS
Date of	Checked By
09/03/2012	NP
Drawing Originator/Project Reference	Drawing Number
PM A 02DP	6063 C

BUILDING REGULATIONS

Drawing Status



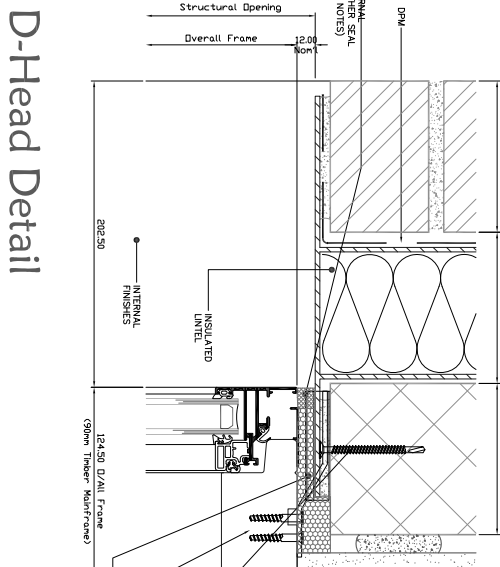
A-Head Detail



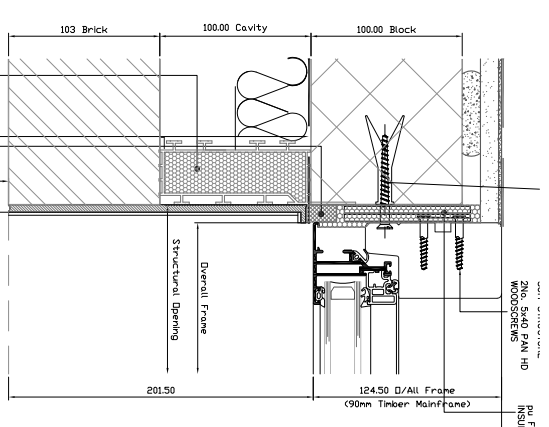
B-Jamb Detail

TYPICAL WINDOW DETAILS - RENDERED WALLS

TYPICAL WINDOW DETAILS - BRICKWORK WALLS



D-Head Detail



E-Jamb Detail