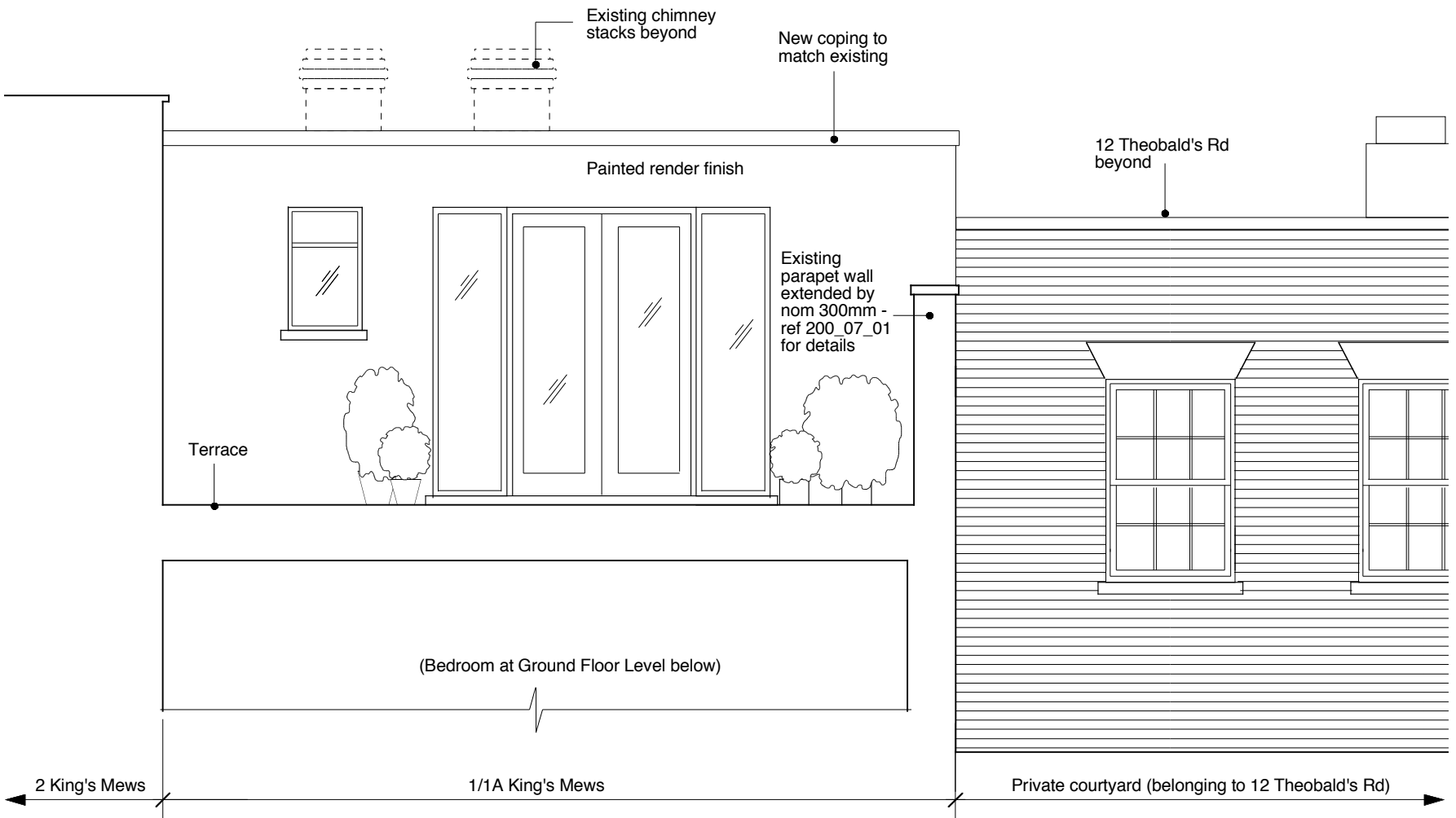
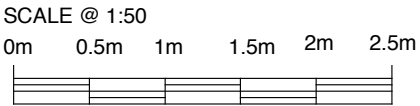


PROPOSED PART-SIDE ELEVATION (ELEVATION X)  
 Scale 1:50@A3  
 Refer to Campbell Architects' dwg 1176\_15\_211 for full details (Planning Ref 2011/1302/P)



PROPOSED REAR ELEVATION (ELEVATION Y)  
 Scale 1:50@A3  
 Refer to Campbell Architects' dwg 1176\_15\_211 for full details (Planning Ref 2011/1302/P)



<p>GENERAL NOTES:</p> <p>DO NOT SCALE FROM THIS DRAWING.</p> <p>ALL DIMENSIONS MUST BE CHECKED ON SITE AND ANY DISCREPANCIES VERIFIED WITH THE ARCHITECT.</p>	<p>CLIENT</p> <p><b>ADTECH HOLDINGS</b></p>	<p>JOB TITLE</p> <p><b>1 KING'S MEWS LONDON WC1</b></p>	<p>DRAWING TITLE</p> <p><b>PRIVACY SCREEN DETAILS - 2 of 3</b></p>	<p>SCALE</p> <p><b>1:50 @A3</b></p> <p>DATE</p> <p><b>4.4.12</b></p>	<p><b>FT ARCHITECTS LTD</b></p> <p>Hamilton House          Mableton Place          Bloomsbury          WC1H 9BB</p> <p>020 7963 0388          www.ftarchitects.co.uk</p>	<p>DRAWING No.</p> <p><b>200_07_02</b></p> <p>REVISION</p> <p>-</p>
---	---	---	--	--	--	---