

Site Name: London (Camden Town)

Site No: 2024

Address: 189 /191 Camden High Street, Camden Town, London, NW1 7BP

Drawing No: SAN01-RBS-2024-V

Drawn By: Marc Bayliss

Date: 026/01/12

Revision Details:

FOR INTERNAL USE ONLY

CLIENT APPROVAL:

Date Reviewed: _____

Reviewed By: _____

Any changes requested by the client to be detailed below:

Scheme Approved (subject to any changes detailed above):

Signed On Behalf Of Client

Existing Elevation Signage

Site Name: London (Camden Town)

Site No: 2024



Proposed Elevation Signage

Site Name: London (Camden Town)

Site No: 2024

Proposed Signage

- A Sign Type L1A, L4**
 - A1 L1A** Flat cut individual acrylic letters fitted by simple-fix locator fixings.
Opal 050 letters
Size: 224mm x 1250mm
 - B L4** Shallow folded aluminium panel finished Red Ral 3020.
 - B1** Panel size: 300mm x 6500mm
 - B2** Panel size: 300mm x 5985mm

- C Sign Type P1 + P1a shroud (2-off)**

Aluminium projecting sign. Panels from 14g aluminium powder coated red Ral 3020. Panels fret cut to accept step inlaid opal 050 acrylic logo.
Sign externally illuminated by aluminium light trough powder coated red Ral 3020, containing Tridonic Talexx Engine Image LED system and acrylic diffuser.
Shroud fabricated from aluminium, powder coated black.
Size: 700mm x 600mm

- D ATM Details**
 - D1** Flat aluminium panel finished blue to cover existing text
 - D2** Acrylic header panel finished red, with Santander text



Proposed Elevation Signage

Site Name: London (Camden Town)

Site No: 2024



Proposed Signage

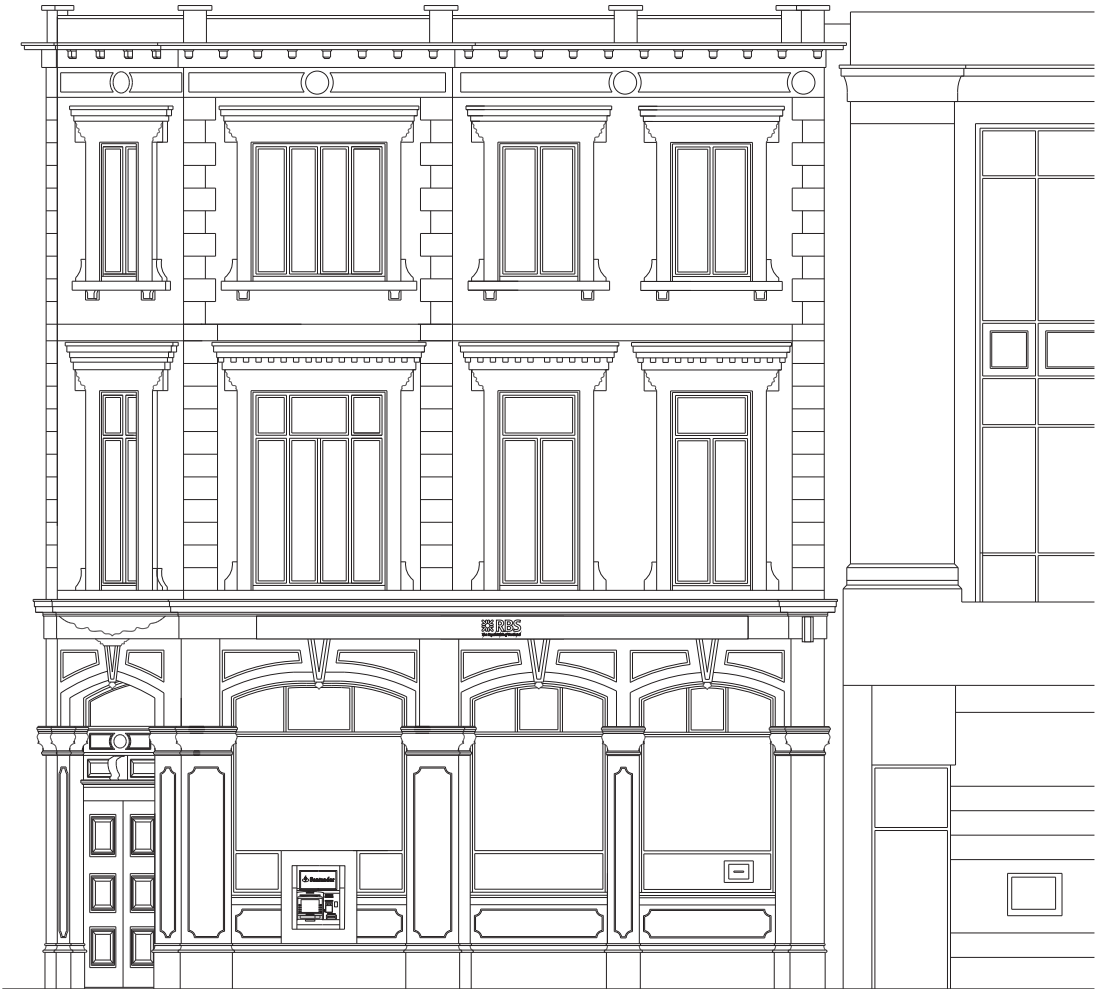
- A Sign Type L1A, L4**
 - A1 L1A** Flat cut individual acrylic letters fitted by simple-fix locator fixings.
Opal 050 letters
Size: 224mm x 1250mm
 - B L4** Shallow folded aluminium panel finished Red Ral 3020.
 - B1** Panel size: 300mm x 6500mm
 - B2** Panel size: 300mm x 5985mm
- C Sign Type P1 + P1a shroud (2-off)**

Aluminium projecting sign. Panels from 14g aluminium powder coated red Ral 3020. Panels fret cut to accept step inlaid opal 050 acrylic logo.
Sign externally illuminated by aluminium light trough powder coated red Ral 3020, containing Tridonic Talexx Engine Image LED system and acrylic diffuser.
Shroud fabricated from aluminium, powder coated black.
Size: 700mm x 600mm
- D ATM Details**
 - D1** Flat aluminium panel finished blue to cover existing text
 - D2** Acrylic header panel finished red, with Santander text

Existing Elevation Signage
Scale 1:100 @ A3

Site Name: London (Camden Town)

Site No: 2024



Existing Elevation Signage
Scale 1:100 @ A3

Site Name: London (Camden Town)

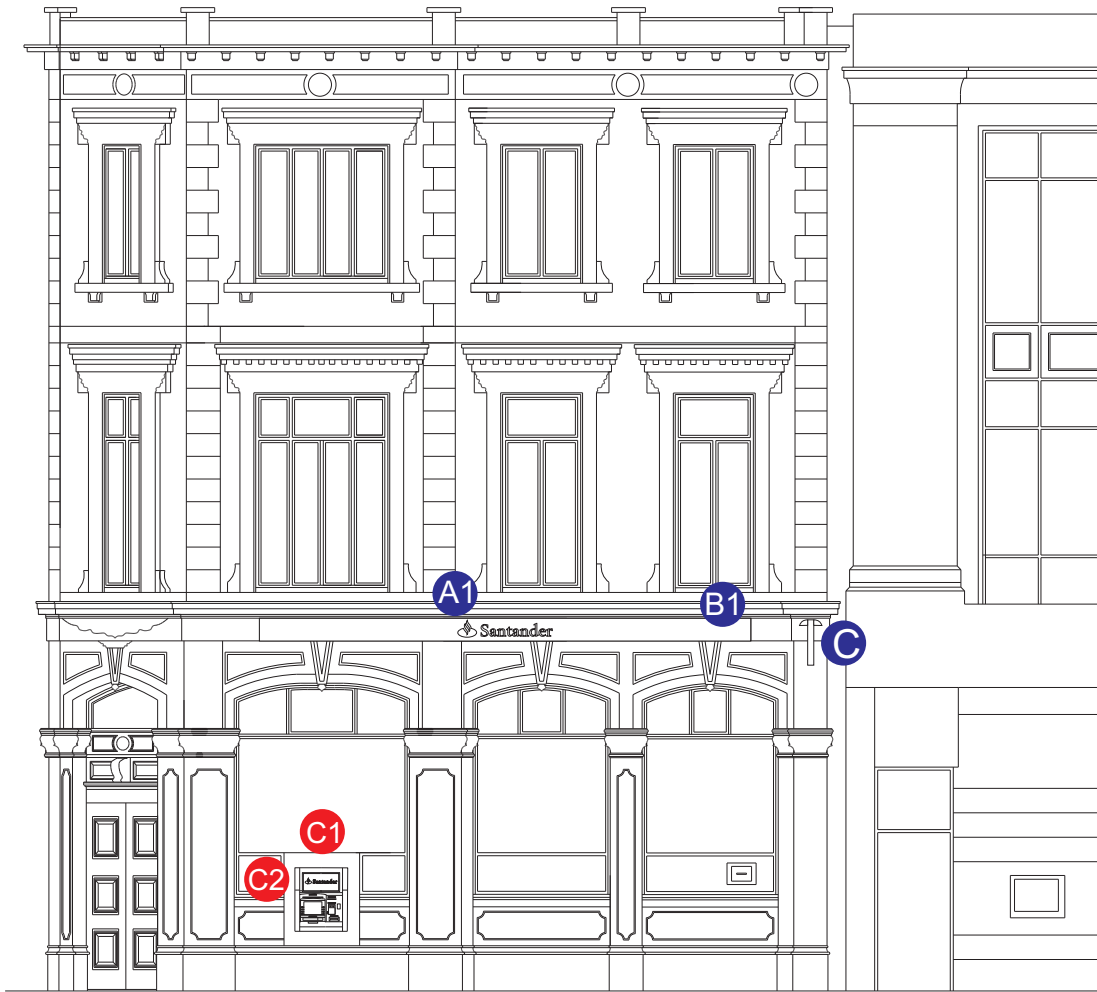
Site No: 2024



Proposed Elevation Signage
Scale 1:100 @ A3

Site Name: London (Camden Town)

Site No: 2024



Proposed Signage

- A Sign Type L1A, L4**
- A1 L1A** Flat cut individual acrylic letters fitted by simple-fix locator fixings.
Opal 050 letters
Size: 224mm x 1250mm
- B L4** Shallow folded aluminium panel finished Red Ral 3020.
- B1** Panel size: 300mm x 6500mm
- B2** Panel size: 300mm x 5985mm

C Sign Type P1 + P1a shroud (2-off)

Aluminium projecting sign. Panels from 14g aluminium powder coated red Ral 3020. Panels fret cut to accept step inlaid opal 050 acrylic logo. Sign externally illuminated by aluminium light trough powder coated red Ral 3020, containing Tridonic Talexx Engine Image LED system and acrylic diffuser. Shroud fabricated from aluminium, powder coated black.
Size: 700mm x 600mm

D ATM Details

- D1** Flat aluminium panel finished blue to cover existing text
- D2** Acrylic header panel finished red, with Santander text

Proposed Elevation Signage
Scale 1:100 @ A3

Site Name: London (Camden Town)

Site No: 2024



Proposed Signage

- A Sign Type L1A, L4**
 - A1 L1A** Flat cut individual acrylic letters fitted by simple-fix locator fixings.
Opal 050 letters
Size: 224mm x 1250mm
 - B L4** Shallow folded aluminium panel finished Red Ral 3020.
 - B1** Panel size: 300mm x 6500mm
 - B2** Panel size: 300mm x 5985mm
- C Sign Type P1 + P1a shroud (2-off)**

Aluminium projecting sign. Panels from 14g aluminium powder coated red Ral 3020. Panels fret cut to accept step inlaid opal 050 acrylic logo. Sign externally illuminated by aluminium light trough powder coated red Ral 3020, containing Tridonic Talexx Engine Image LED system and acrylic diffuser. Shroud fabricated from aluminium, powder coated black.
Size: 700mm x 600mm
- D ATM Details**
 - D1** Flat aluminium panel finished blue to cover existing text
 - D2** Acrylic header panel finished red, with Santander text

Sign Type L1A - Construction details
Flat cut descaled stainless steel letters on locators

A1



Scale 1:5 @ A3

Individual letters on locators - size and colour site specific

Please refer to individual site drawings for colours and sizes.

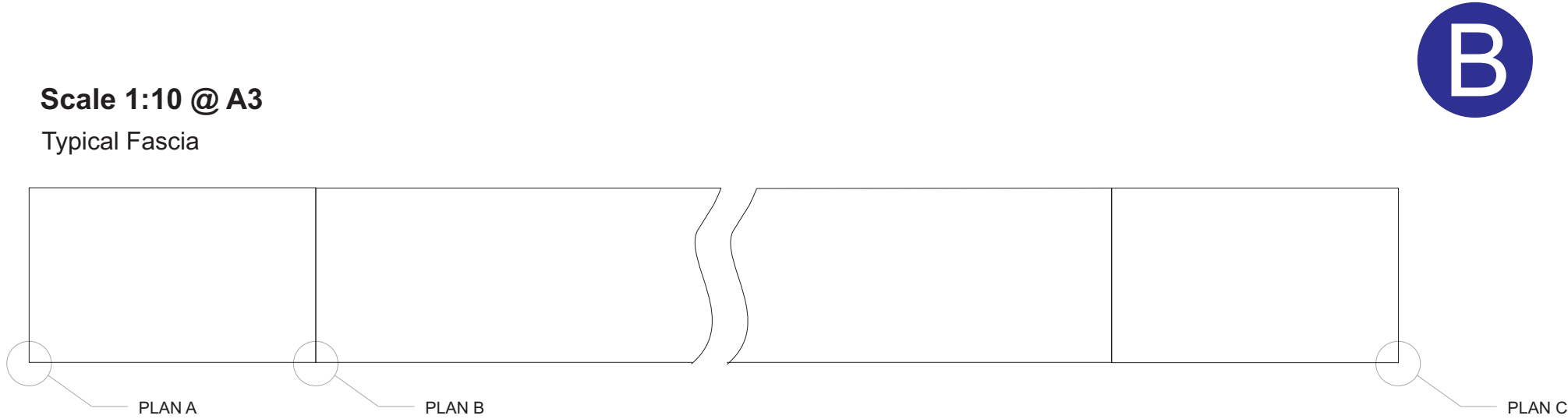
5mm acrylic
Letter faces
Logo & text

Simplefix
Locators

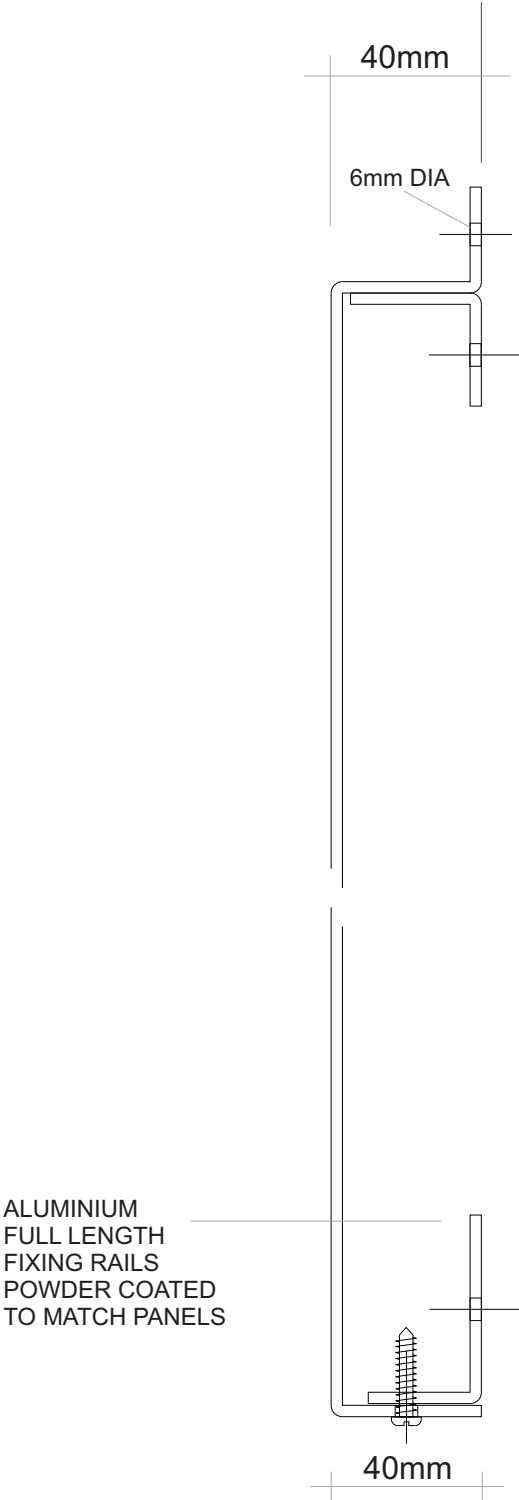
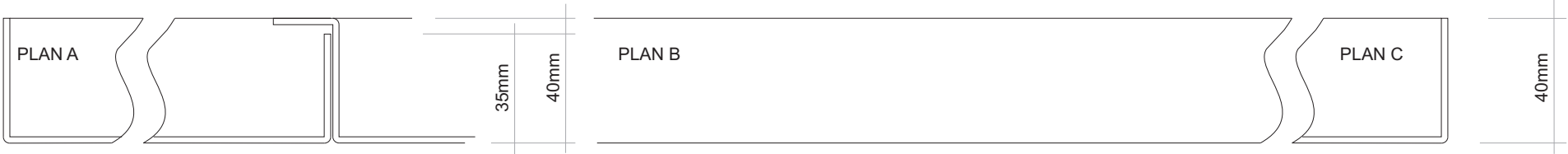
Scale 1:2 @ A3

Sign Type L4 - Construction details

Scale 1:10 @ A3
Typical Fascia



Scale 1:2 @ A3



Scale 1:2 @ A3