

Construction Notes
Part B

Fire Detection
To all rooms indicated provide and install hard wired smoke/heat detectors as required complete with internal sounder. All to comply with requirements detailed in Schedule of Employers Requirements.

Fire Doors
To all rooms indicated provide and hang new 44mm solid core fire resisting doors complete with rebated intumescent, smoke seals and door closers

Part B & E - Wall and Floor Construction
Provide and install new separating walls and floors using Sound Reduction System's Maxi 60 wall and floor system, infill studs/joists with 50mm Rockwool Roll min. 45kg/m³. Fix SRS resilient bars to studs/joists using 30mm screws, to resilient bars fix 1No layer of Maxiboard ensuring all abutting edges are glued together using grip fix. Seal perimeter and any joints with flexible silicone sealant. Overlay with 15mm Fireline board and plaster skim, ready for decoration.
To opposite side of studs fix 1No layer of Fireline board and plaster skim to provide 60 min fire resistance.
To opposite side of floor fix 2No layers 3mm plywood and lay Acoustlay 3 carpet underlay including staircase
NB: Ensure all gaps, joints etc are well sealed with flexible silicone sealant.

Part C1 & F - Ventilation
Provide minimum 10,000mm²/m to roofspace at eaves height and 5,000mm²/m to roofspace at ridge height using combination of ventilated soffits and slates, over fascia ventilator and top edge abutment ventilating system as detailed in the specification.

Provide new mechanical ventilation fans to bathrooms and kitchens as follows:
• Kitchen - 60/s extract
• Bathroom - 15/s extract linked to light with 15 minute overrun
Ensure fans fitted with triple pole isolator switches fixed to external face of bathroom as indicated.

Construction Notes

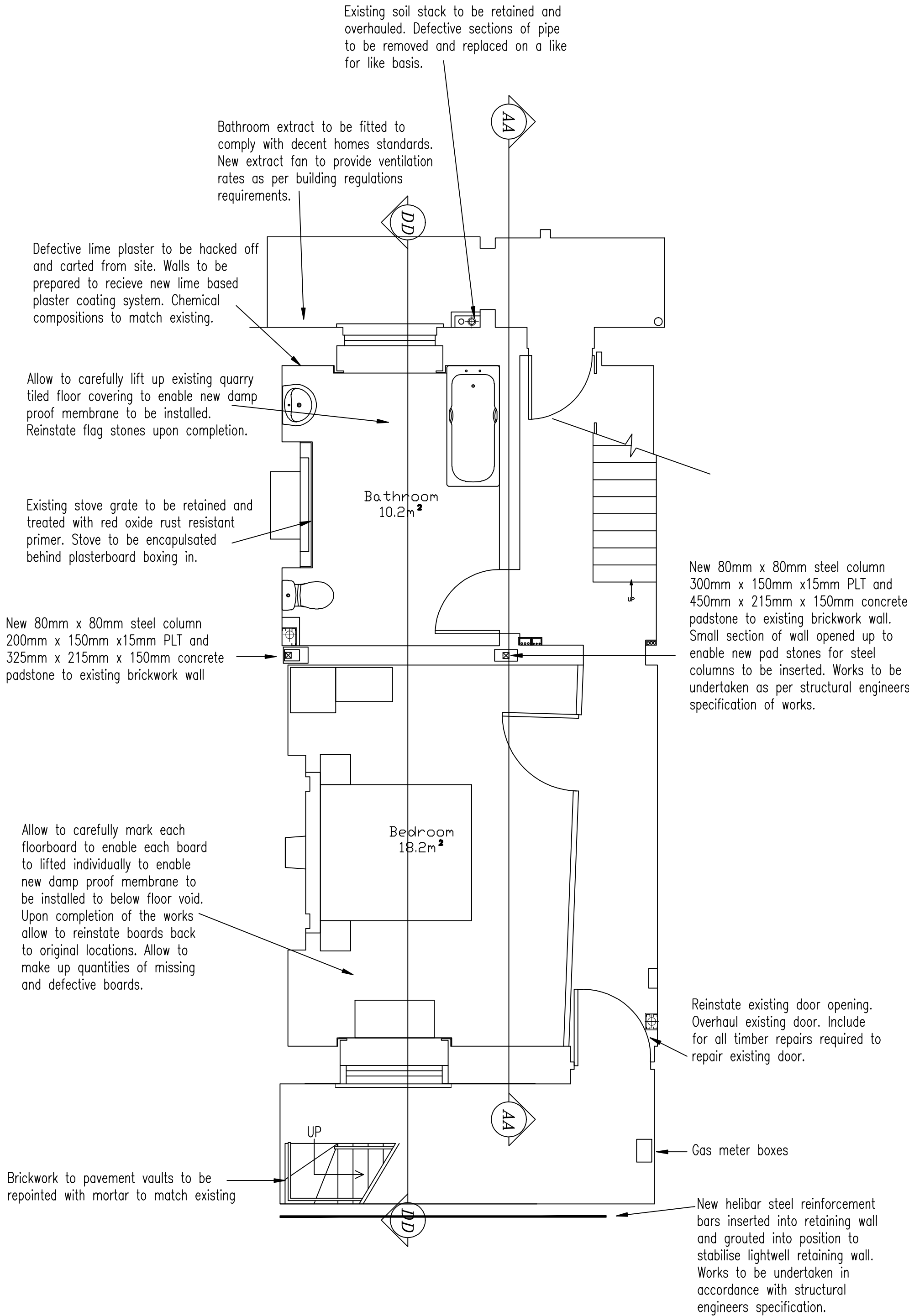
Part H - Below Ground Drainage
New drainage runs minimum 1:40 fall with trench bottom well compacted and levelled, all with flexibly jointed couplings and 150mm pea shingle bedding and surround. All to be tested to the approval of the CA & Local Authority Inspector. All to comply with Part H

Part H - Above Ground Drainage
Provide new plumbing pipework and rainwater goods, connect into new and existing gullies. All new gullies and pipework to be laid in accordance with the specification and to comply with Part H. New soil stacks to be constructed from 100mm cast iron soil pipework.

Part H - Sanitaryware
All appliances to have 75mm deep seal bottle traps with anti-siphon valves to end of runs with rodding eyes to all bends and junctions.
• 32mm wastes to wash basins
• 38mm wastes to showers, sinks & washing machines

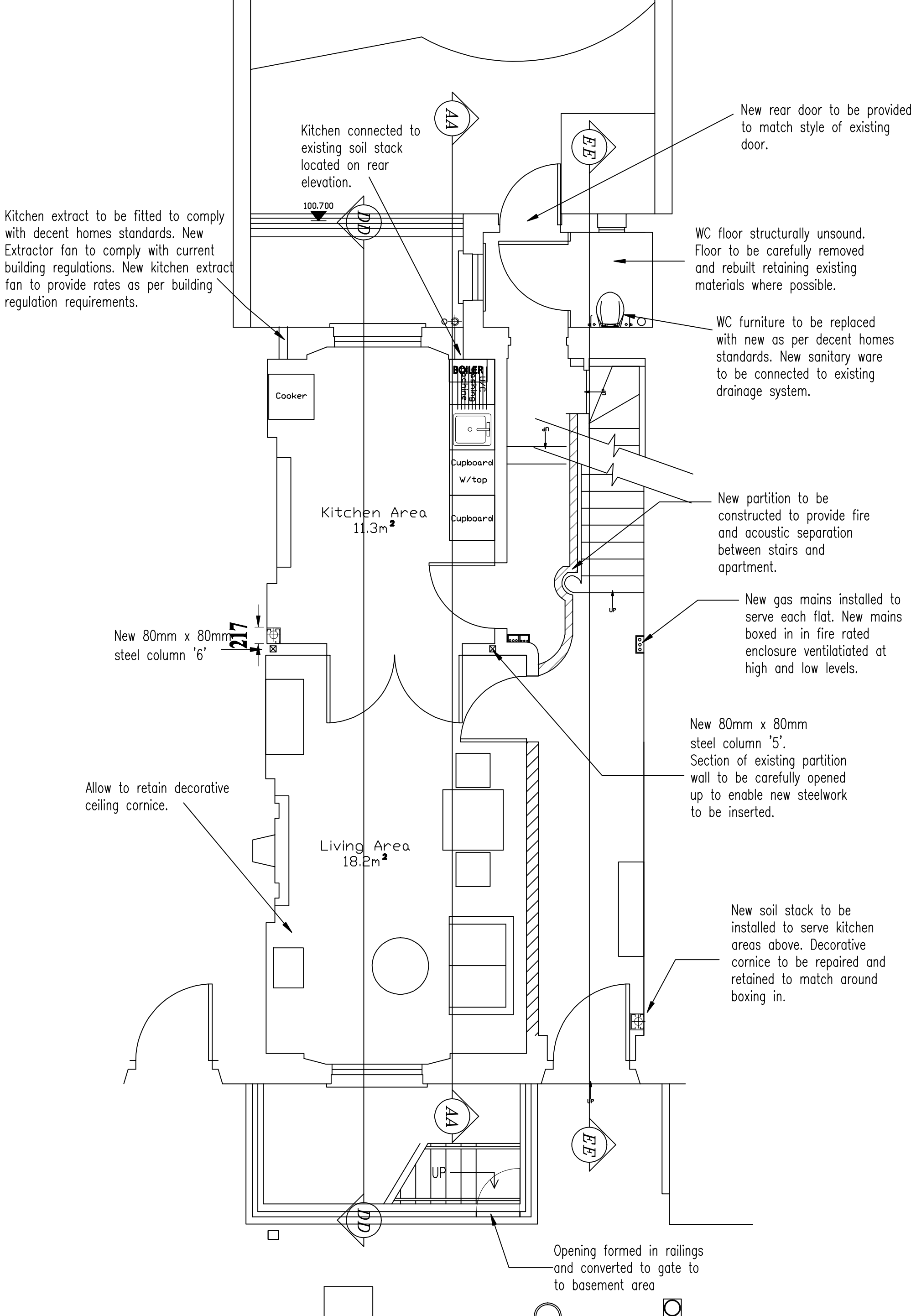
Part G - Sanitation, Hot water and Water Efficiency
To all new hot water services ensure Type 2 TMV's are fitted to provide hot water supply cut off valve in the event of cold water supply failure in accordance with Part G and BS EN 1111.

Part P - Electrical Installation
All electrical work will be designed, installed and tested by a competent person to meet the requirements of Part P, and that prior to completion an appropriate BS7671 certificate will be issued for the work by a person competent to do so.



BASEMENT LEVEL

TOTAL FLOOR AREA: 40.6M²



GROUND FLOOR

TOTAL FLOOR AREA: 29.5m²
TOTAL DWELLING AREA: 70.1m²

Do not scale from this drawing
All dimensions to be checked on site

Notes:

1x 1 Bedroom Flat - Basement & Ground Floor
1x Studio Flat - 1st Floor
2x 1 Bedroom Flats - 2nd & 3rd Floor

Amendments:

C	Partitioning amended proposed riser routes shown.	13/9/12
B	Hallway Partition amended	20/12/11
A	Partitions and layouts amended	13/12/11

Drawing type:
Listed Building Consent

Client:
LONDON BOROUGH OF CAMDEN

Project:
9 Calthorpe Street
London, WC1Z 0JP

Title:
Proposed Refurbishment Plans
Basement and Ground Floor

Scale: 1:50 @A1 Date: 05/07/11

Drawn: JP Checked: JS

Dwg.no: 114061/14

Rev: C

Watts.

Watts Group PLC
1 Great Tower Street
London EC3R 5AA

T: +44 (0)20 7280 8000
F: +44 (0)20 7280 8001

W: Watts-international.com