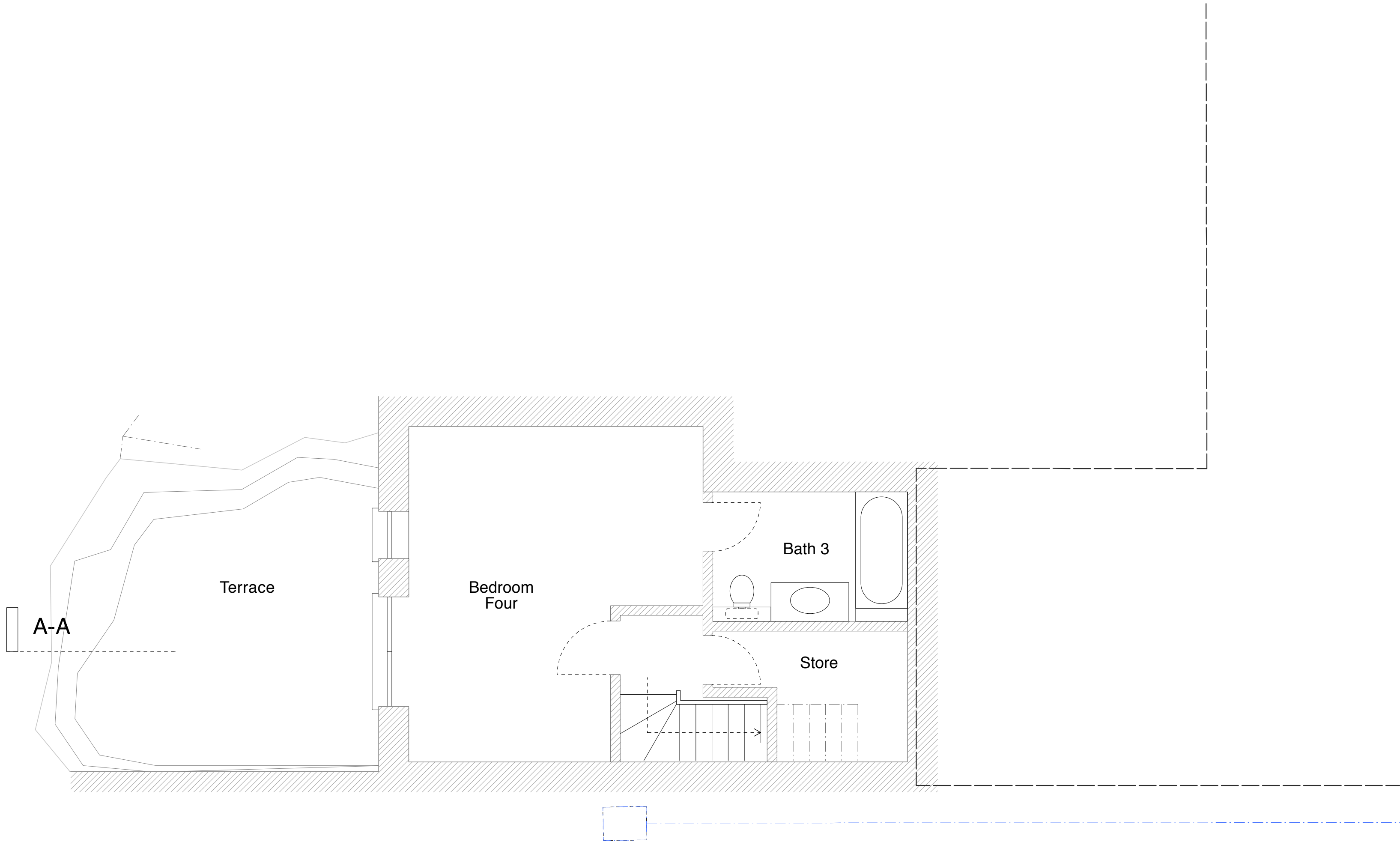


Proposed: Basement Floor Plan



General Notes

All dimensions to be verified on site
To be read in conjunction with all relevant documents
In the event of discrepancy notify the Architect immediately
This document is copyright of Hugh Cullum Architects Ltd

Issue		Status		
SK	Information	F	Feasibility	D Design
P	Permissions	S	Scheme	T Tender
C	Construction	E	Existing Condition	

Drawing Notes

Materials:

All construction materials and external detailing to extension and infill above ground level to match existing:

Extension

Walls: Red stock brickwork
Roof: Clay tiles with stained timber fascia
Windows: Painted timber frames


Conservatory


Structure: Painted timber
Roof: Single ply membrane with lead flashing
Windows: Painted timber frames
Rooflight: Powder coated metal

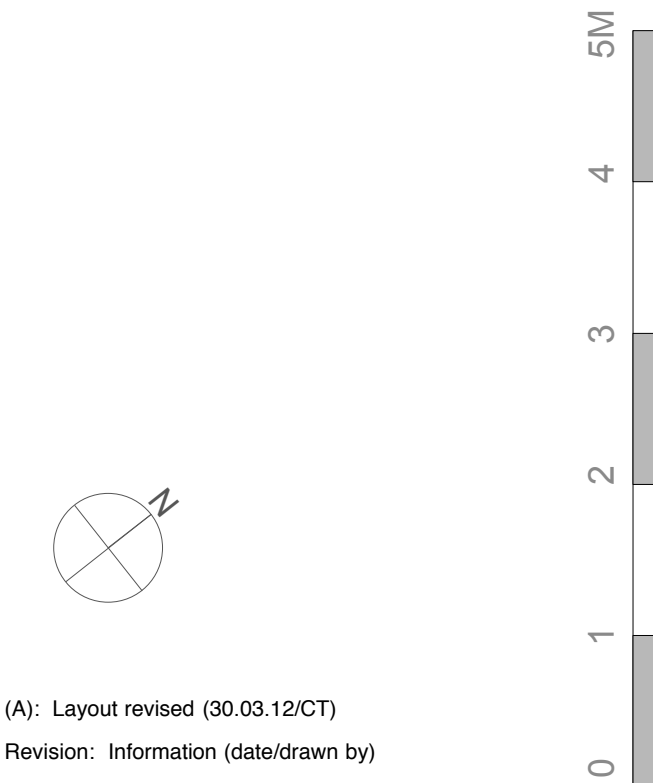
Basement materials

Walls: Red stock facing brickwork
Doors: Powder coated metal

Key

 Proposed demolition

 New construction



(A): Layout revised (30.03.12/CT)
Revision: Information (date/drawn by)

HUGH CULLUM
ARCHITECTS LTD
Bloomsbury Design
61b Judd Street
London WC1H 9QT
t 020 7383 7647
f 020 7387 7645
mail@hughcullum.com

17 Bracknell Gardens

Proposed
Basement Floor Plan
1:50@A2 February 2012

BG017-P021(A)