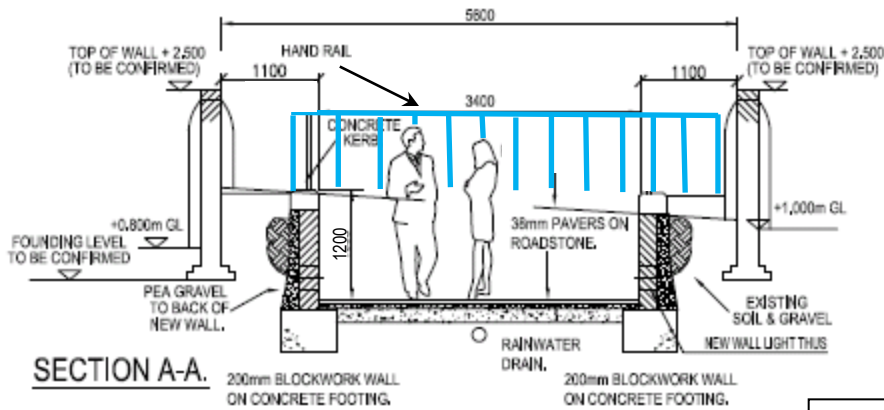
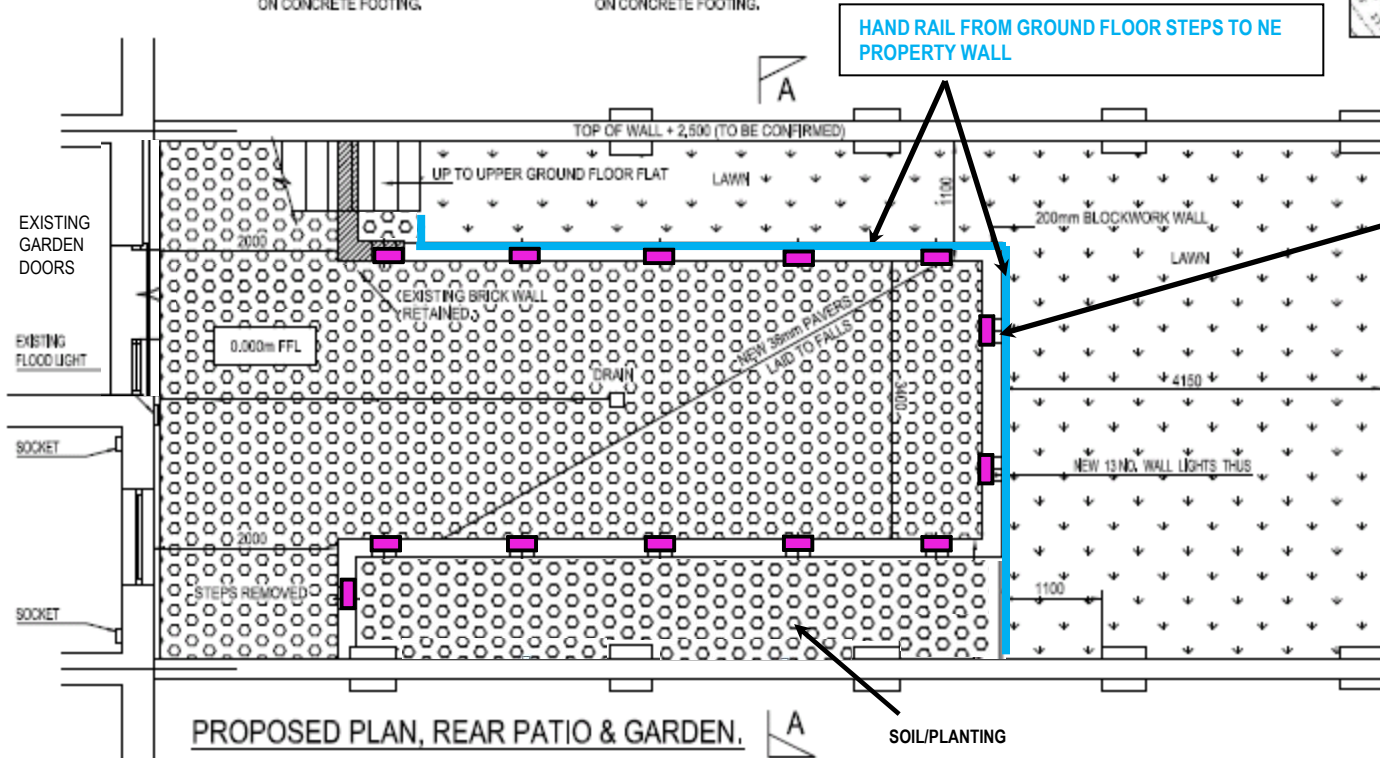
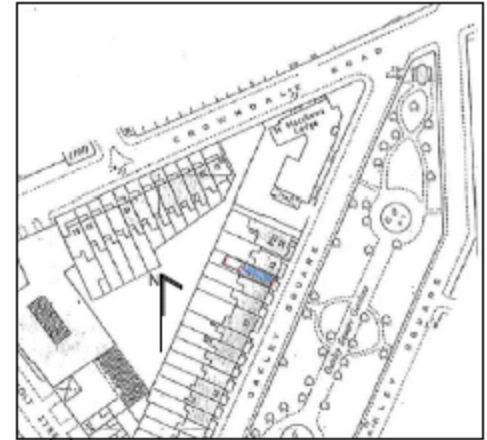
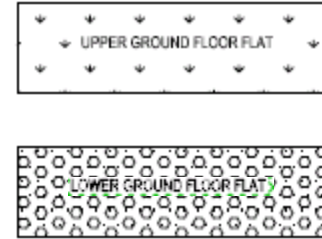


# A3 – Garden Design Plans (Proposed with railings and lighting – Section A-A)



## KEY



HAND RAIL FROM GROUND FLOOR STEPS TO NE PROPERTY WALL

13 GLS Energy Efficient Recessed Brick Lights - 9w. Installed in retaining walls 20cm from ground.



| Rev | Date | By | App'd | Comments |
|-----|------|----|-------|----------|
|     |      |    |       |          |
|     |      |    |       |          |
|     |      |    |       |          |

|       |           |            |         |
|-------|-----------|------------|---------|
| Date  | Aug 2010  | Drawn by   | Corovan |
| Scale | 1:50 @ A3 | Check'd by | 1985    |