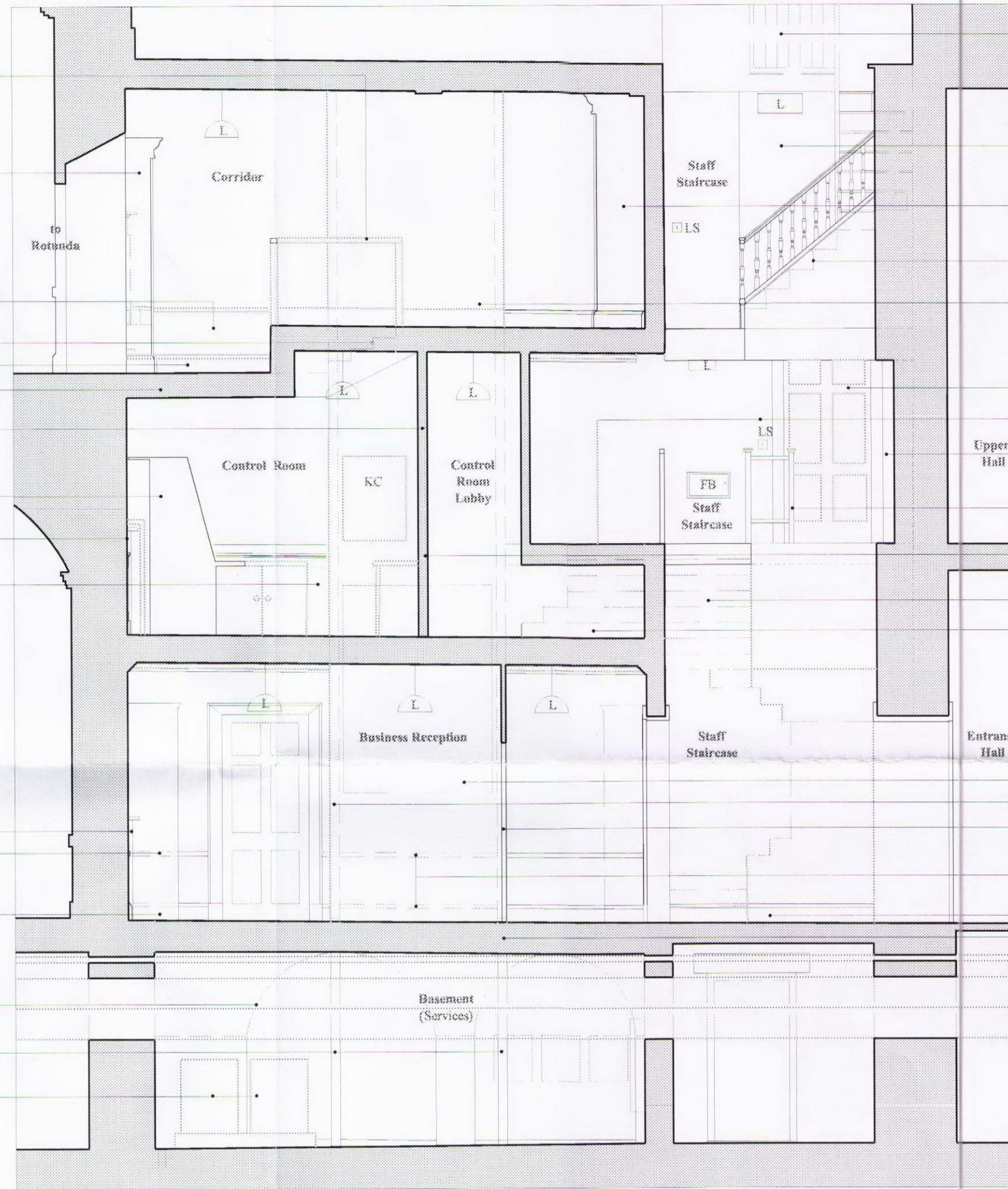


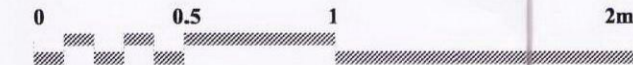


Section A - A
As proposed

- handrail to new steps
- reused adapted cupboard (non openable) to cover existing fireplace behind
- new plain wainscot panelling
- retained skirting in lift shaft
- new steps to lowered level
- lower existing skirting
- partially lower floor to enable level access to Rotunda/Lecture Theatre
- modern security partition with door and hatch to Control Room
- new Control Room furniture
- boxed in fireplace behind new Control Room furniture
- existing wainscot panelling (to be retained behind lift shaft, underneath extended landing and new Control Room furniture)
- lift shaft (brickwork)
- lift
- fireplace
- decorative dado rail
- skirting
- brickwork vaults, all to be limewashed
- new steel column with bracket to support existing services
- Relocated server on MDF pallets



Section B - B
As proposed



- security door to offices on 2nd floor
- understairs cupboard (containing services)
- modern shelf
- lino covered steps
- lift shaft (painted plaster)
- door to Adam Staircase with uncovered architrave
- extended landing for level entrance to lift
- partially opened up cupboard with new lintel above (to gain more wheelchair turning circle space)
- newel post of handrail (adapted to accommodate new landing width)
- security alarmed door to Control Room
- altered staircase (lino covered)
- new steps leading from extended landing into Control Room
- lift
- lift shaft (painted plaster)
- glass partition with access controlled door
- dado and skirting behind lift shaft to be left in place
- skirting
- glass partition with access control door

Key

FA	Fire alarm
LS	Light switch
L	Lamp
FL	Fluorescent lamp
A/C	A/C unit
FB	Fuse board
SP	Services panel
KC	Keys cupboard

Please note:
Services to run along lift shaft from ground to mezzanine floor.
New lighting to Business Reception, Control Room, Control Room Lobby, Corridors and Mezzanine floor.

Rev	Date	comment
-	March 2012	LBC application & Tender

DESIGN

**Caring for Kenwood
Lift Access
Sections - as proposed**

Scale 1:50 @ A2	Date March 2012	Drawn ML	No. 5166-03 / 204	Rev. -
--------------------	--------------------	-------------	----------------------	-----------

CARDEN & GODFREY
Architects

Carden & Godfrey Limited
33 Clerkenwell Close
London EC1R 0AU
Telephone: 020 7490 0300
Facsimile: 020 7490 0004
mail@cardenandgodfrey.co.uk

© Carden & Godfrey Ltd own the copyright of this drawing and design which must not be reproduced in whole or part without the written permission of Carden & Godfrey Ltd