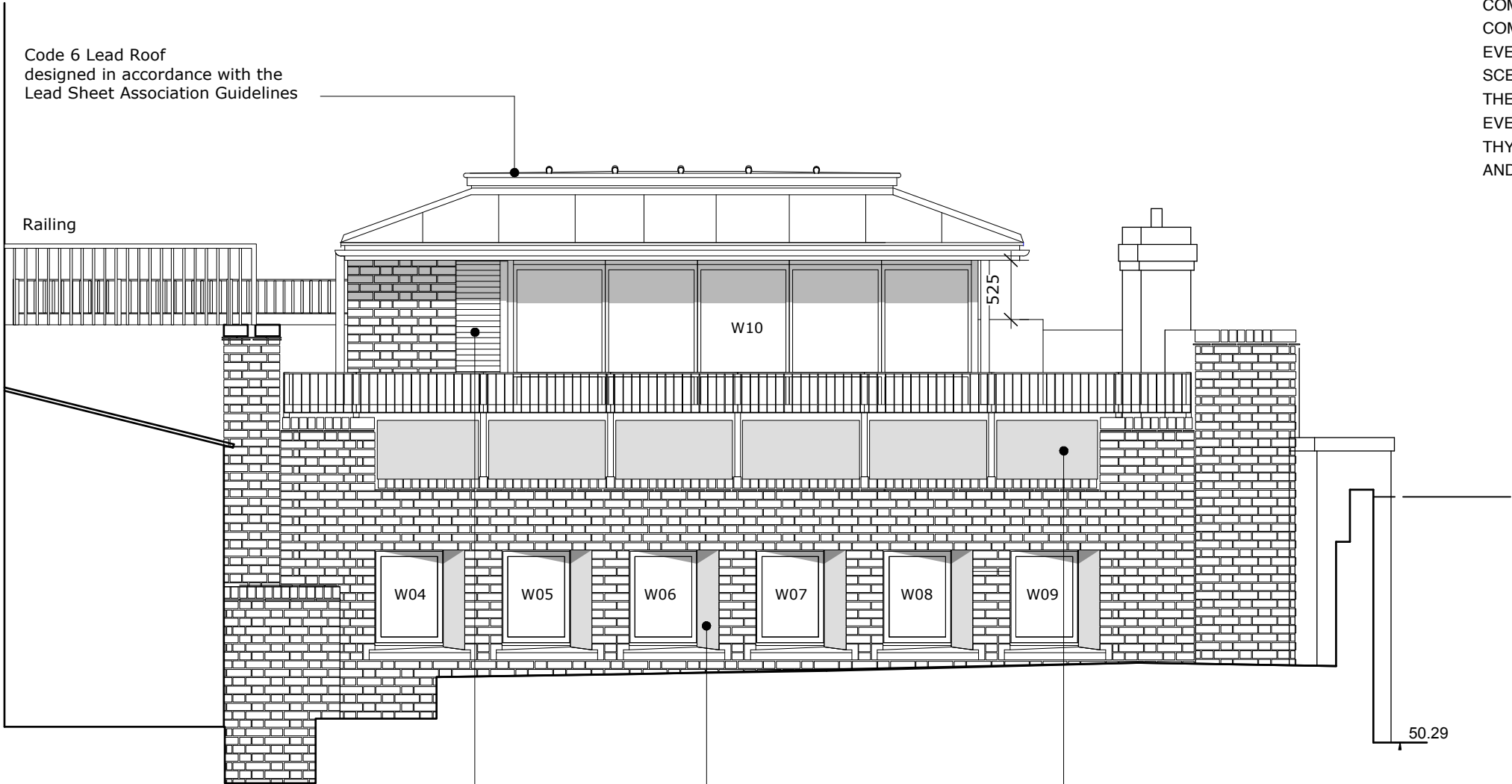


NOTES

A NESTING BOX FOR HOUSE SPARROWS OR TITS WILL BE FIXED UNDER THE EAVES TO ENCOURAGE NESTING.

THE PLANTS ON THE TERRACE WILL BE CHOSEN FOR YEAR-ROUND INTEREST: WINTER EVERGREENS, AUTUMN COLOUR AND SUMMER FLOWERING. CLIMBING PLANTS WILL PARTIALLY CONCEAL THE RAILINGS AND TUMBLE DOWN THE BRICKWORK HELPING THE BUILDING TO INTEGRATE COMFORTABLY INTO ITS SETTING. FOR INSTANCE WE MIGHT COMBINE TRACHELOSPERMUM JASMINOIDES, WHICH IS AN EVERGREEN CLIMBER WITH DELICATE LEAVES AND WHITE SCENTED FLOWERS WITH A SUMMER FLOWERING ROSE. THEN FOR LOW-LEVEL PLANTING WE MIGHT USE AN EVERGREEN HEBE AND INTERSPERSE IT WITH LAVENDER, THYME AND MARJORAM WHICH ARE SUMMER FLOWERING AND WHICH ATTRACT BUTTERFLIES.



Ventilation Louvre powder-coated dark grey to match the lead roof. To provide secure ventilation without the requirement for air-conditioning.

Precast reconstituted stone structural window linings and window cills. The linings provide the required support for the Flemish Bond London Stock brickwork and structural support for the terrace construction above.

6 individual lead-clad permanently-fixed planting boxes below the railing. Boxes are placed in line with the brickwork to allow sufficient width for the fire escape route across the terrace.

AS PROPOSED

S.H. ARCHITECTS LIMITED 17 POWIS MEWS LONDON W11 1JN TEL +44(0)20 7792 2631 FAX +44(0)20 7727 3328 mail@sophiehicks.com				DRAWING: PROPOSED WEST ELEVATION SCALE: 1:50@A3 DATE: 29/MAR/12 DRAWN: TH STATUS: STAGE D JOB NO: RS01 CLIENT: - PROJECT: 1 REGENT SQUARE, WC1H 8HZ Rear Ground Floor flat COPYRIGHT IS RESERVED.			
P2	23-04-12	Ventilation added and notes for Planning	TH	SH	DRAWING No.		
P1	03-04-12	Preliminary- First Issue	TH	SH	REVISION		
REV	DATE	NOTES	DESIGNED BY	CHECKED BY	RS01_L_10	P2	

NOTE:
CONSTRUCTION AND IMPLEMENTATION OF DESIGNS CONTAINED IN THIS DRAWING IS THE RESPONSIBILITY OF THE CONTRACTOR. EXCEPTING THE PROJECT WHO MUST ENSURE THAT ALL LOCAL LAWS AND REGULATIONS ARE COMPLIED WITH.
S.H. ARCHITECTS LTD. DOES NOT ACCEPT ANY RESPONSIBILITY.