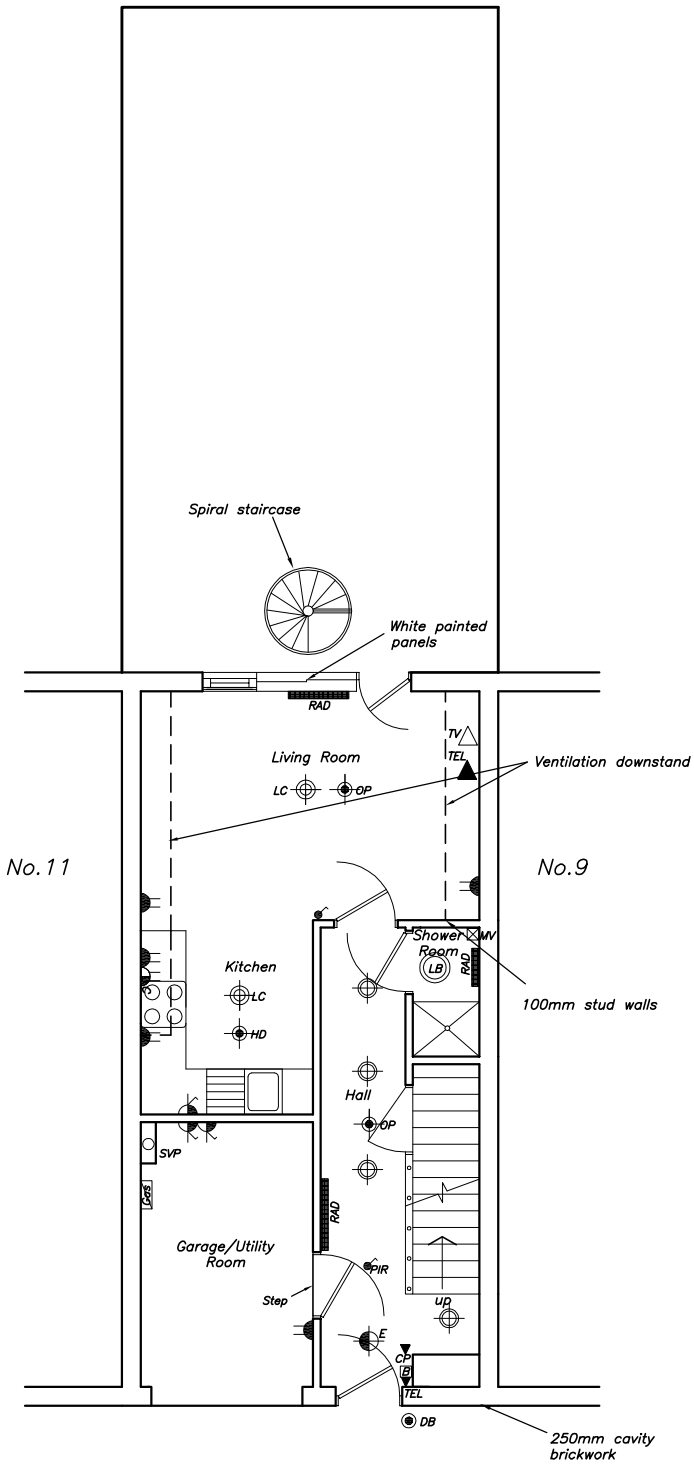
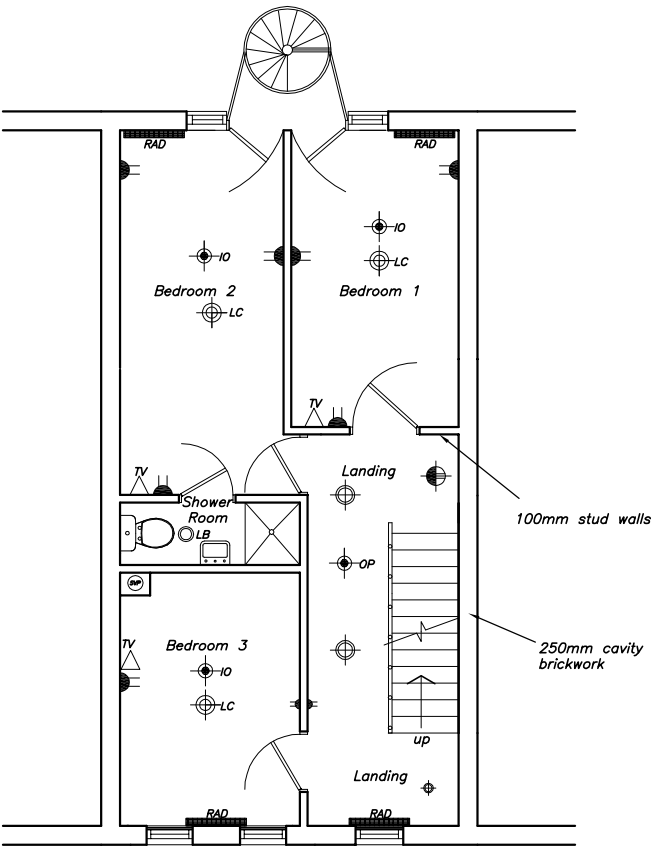


Notes :-
1. This drawing to be read in conjunction with all relevant Architects, Engineers & Specialist drawings and specifications.

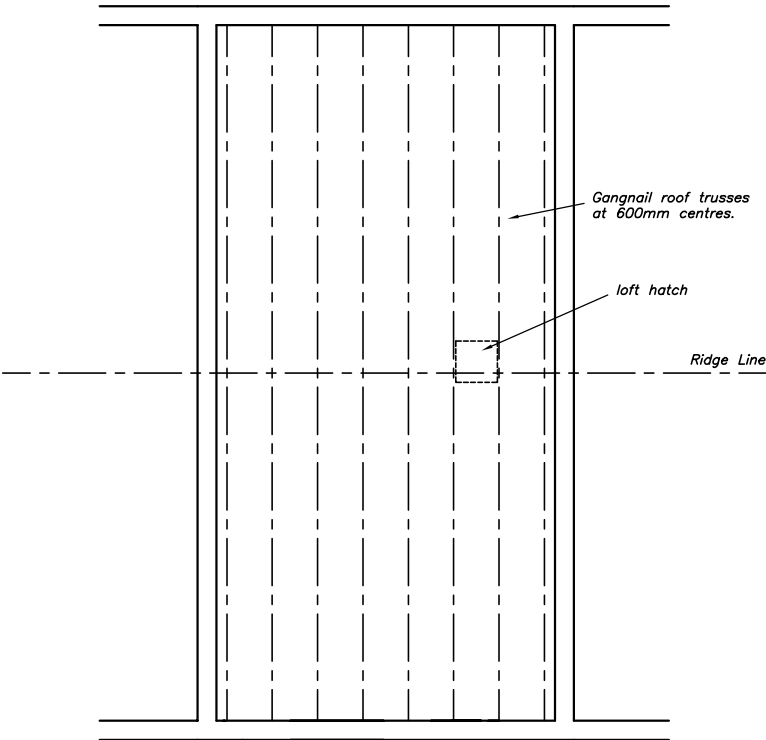
Key	
	Blank plate SW
	1G 1Way plate SW
	Passive InfraRed SW
	Double socket outlet
	Fused spur & sockets for E/cooker, Hob
	Switched spur outlet
	Television point
	Telephone point
	Door Bell button
	Recessed Halogen spotlight
	Emergency lighting
	Low Energy Ceiling lights
	Low Energy Bathroom light
	Mains operated Optical Detector
	Mains operated Ionisation Detector
	Test and Locate Point
	Gas Meter
	MV Mechanical Ventilation 15min overrun



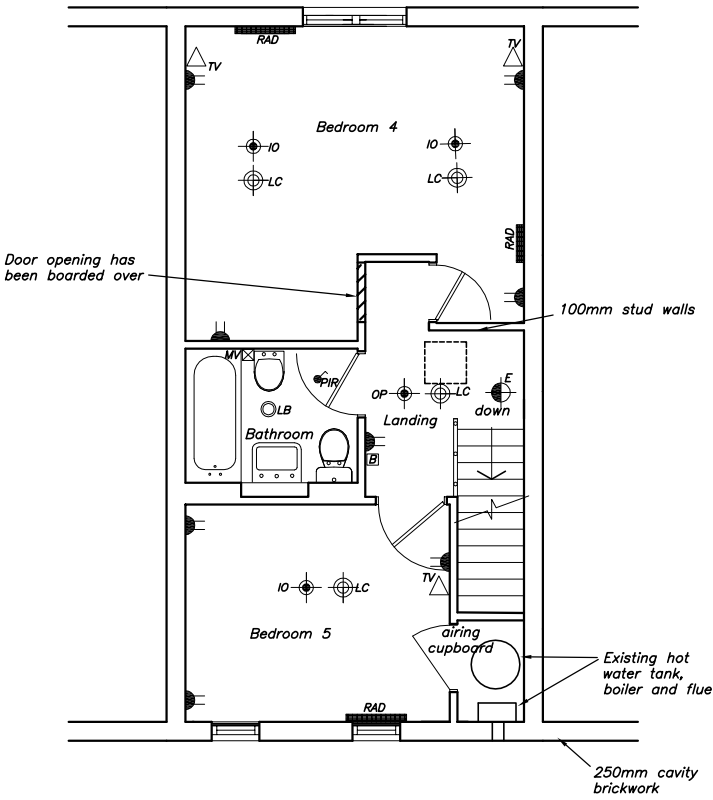
Existing Ground Floor Plan



Existing First Floor Plan



Loft Plan



Existing Second Floor Plan

B.	16.04.12	ISSUED FOR BUILDING CONTROL APPROVAL	
A	06.04.12	GENERALLY REVISED	
.	30.03.12	ISSUED FOR CLIENTS COMMENTS	
Rev	Date	Comment	
<div><div>scale 1:50 @ A1</div><div>0 1 2 3</div><div>0 2 4 6</div><div>scale 1:50 @ A3</div></div> <div>METRES</div>			
<div>clive adams associates ltd</div> <div>Consulting Engineers</div> <div>15 The Parade, Harold Park, Romford, Essex, RM3 0AQ.</div> <div>Telephone: (01708)344344 Facsimile: (01708)349606</div> <div>E-mail address: design@cliveaa.com</div>			
Project			
10 St Pauls Mews, NW1			
Title			
Existing Ground Floor, First Floor and Second Floor Plans			
Drawn	Checked	Date	Scale
K.R.	C.I.A.	Mar 12	1:50@A1
Drawing No			Rev
7027/01			B.
Cod File: \\network\Drawings\Miscellaneous\10 StPaulsMews\7027			