

No dimension should be scaled off this drawing
Site dimensions must be checked before
manufacture. If in doubt please ask.

Notes:

GENERAL NOTES:

27 FLATS TOTAL - 184 BED

BUILDINGS TO INCLUDE
COMPREHENSIVE FIRE SYSTEM
FIRE PROTECTION - WITH SPRINKLERS
FIRE ALARM SYSTEM - FULLY
ADDRESSABLE

HMO Requirements Compliance Checklist
All Flats exceed these requirements

Minimum Bedroom Size - 2 Beds: 11.0 M² [118.4 SF]

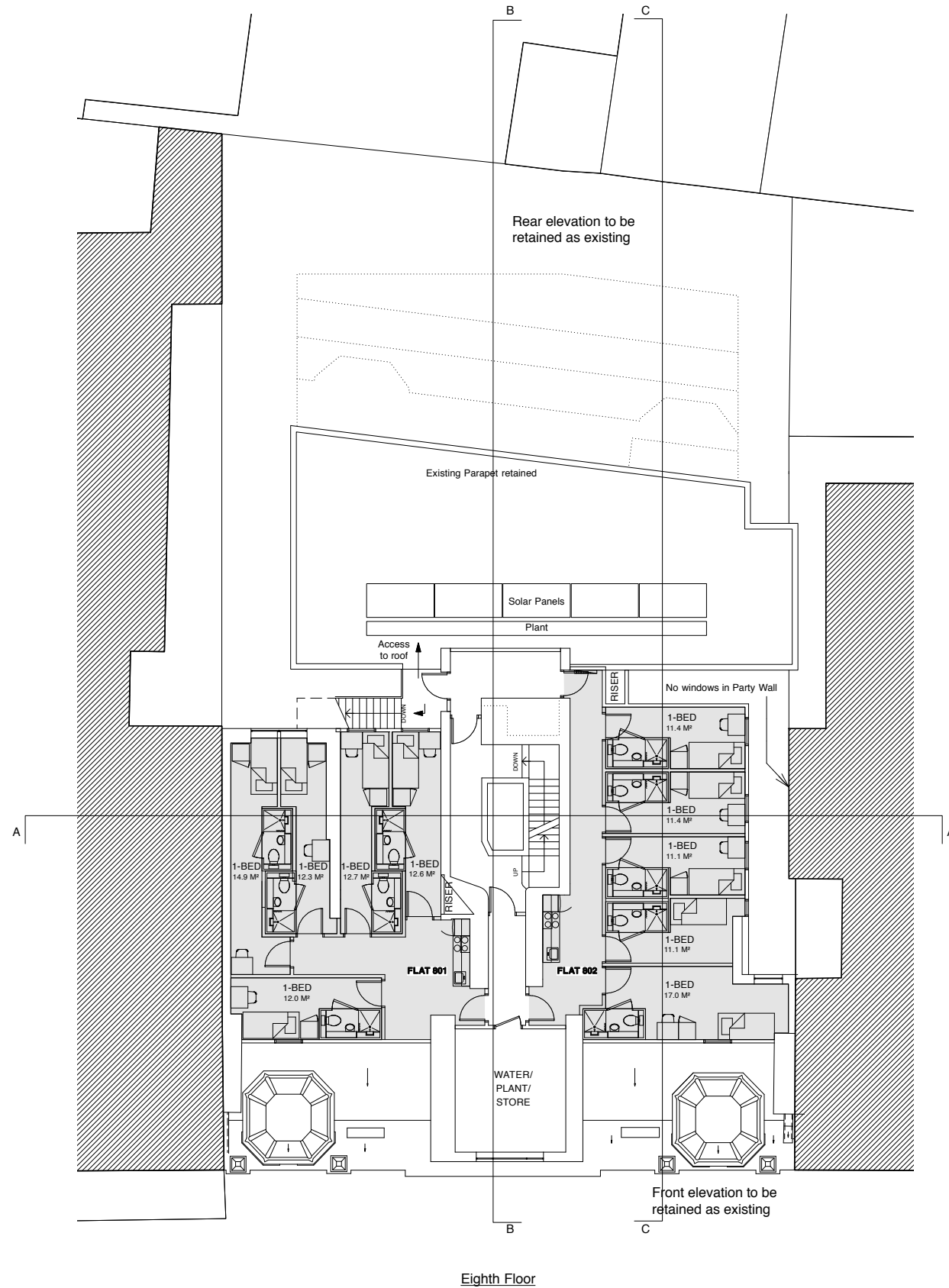
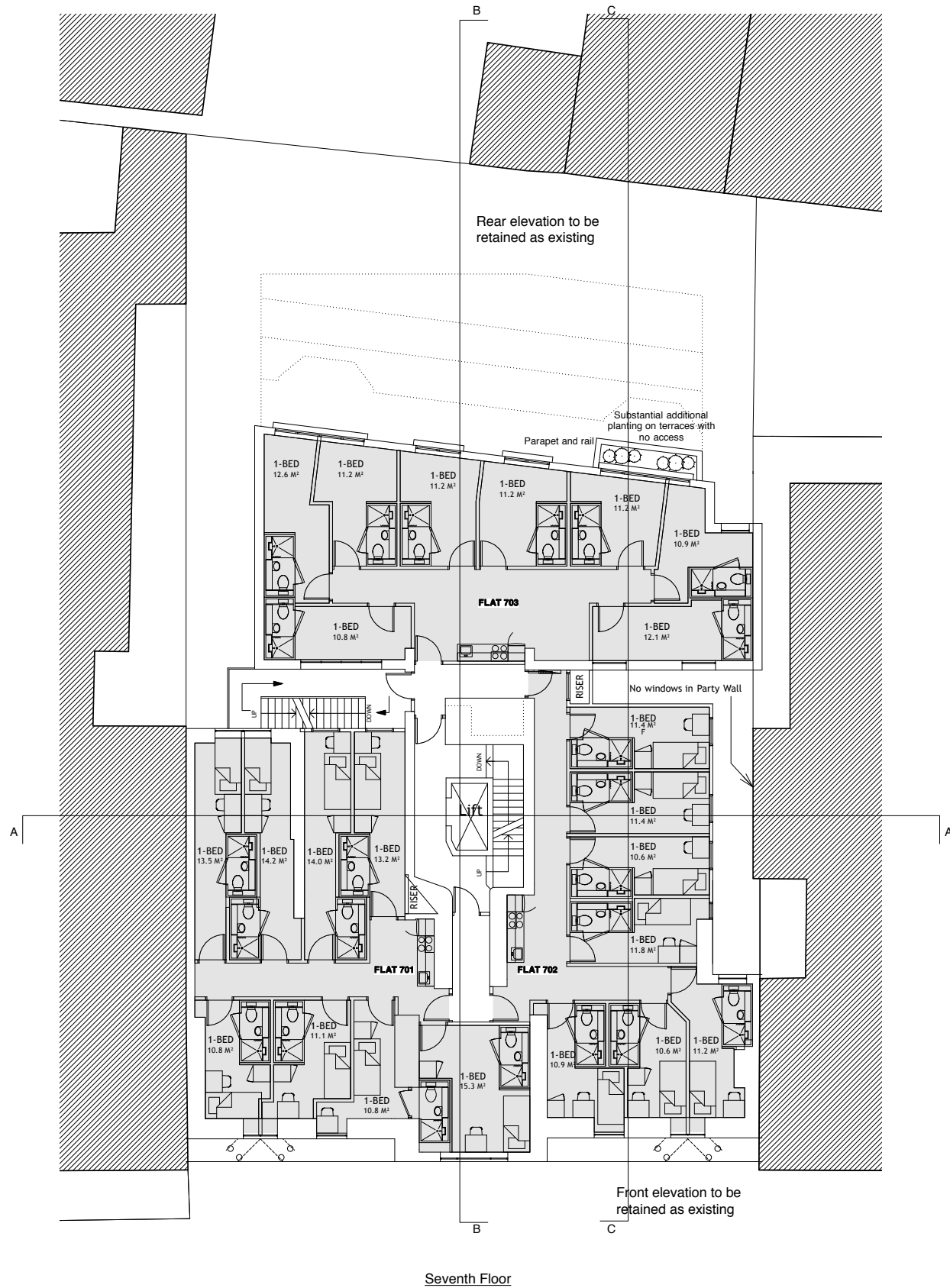
Minimum Bedroom Size - 1 Bed: 9.0 M² [96.9 SF]

Minimum Bedroom Size where Kitchen not
Enclosed: 12.0 M² [129.2 SF]

Minimum Kitchen/Diner Size - up to 4 persons: 8.0
M² [86.1 SF]

Minimum Kitchen Work Length - up to 4 persons: 2.3
M [7.6 Ft]

Minimum Full Bath Size: 2.8 M² [30.1 SF]



A	12.4.2012	8th floor layout altered	
letter	date	revision	initial

date March 2012
job name

Southampton Row, London

title
Proposed - Seventh & Eighth
Floor Plans

scale
1:100 @ A1

job no. drawing no.
1130 G107A

Casson Conder Partnership Architects
29a Thurloe Place London SW7 2HQ Tel 020 7584 4581