

No dimension should be scaled off this drawing  
Site dimensions must be checked before  
manufacture. If in doubt please ask.

Notes:

**GENERAL NOTES:**

**27 FLATS TOTAL - 184 BED**

**BUILDINGS TO INCLUDE**  
**COMPREHENSIVE FIRE SYSTEM**  
**FIRE PROTECTION - WITH SPRINKLERS**  
**FIRE ALARM SYSTEM - FULLY**  
**ADDRESSABLE**

HMO Requirements Compliance Checklist  
All Flats exceed these requirements

Minimum Bedroom Size - 2 Beds: 11.0 M<sup>2</sup> [118.4 SF]

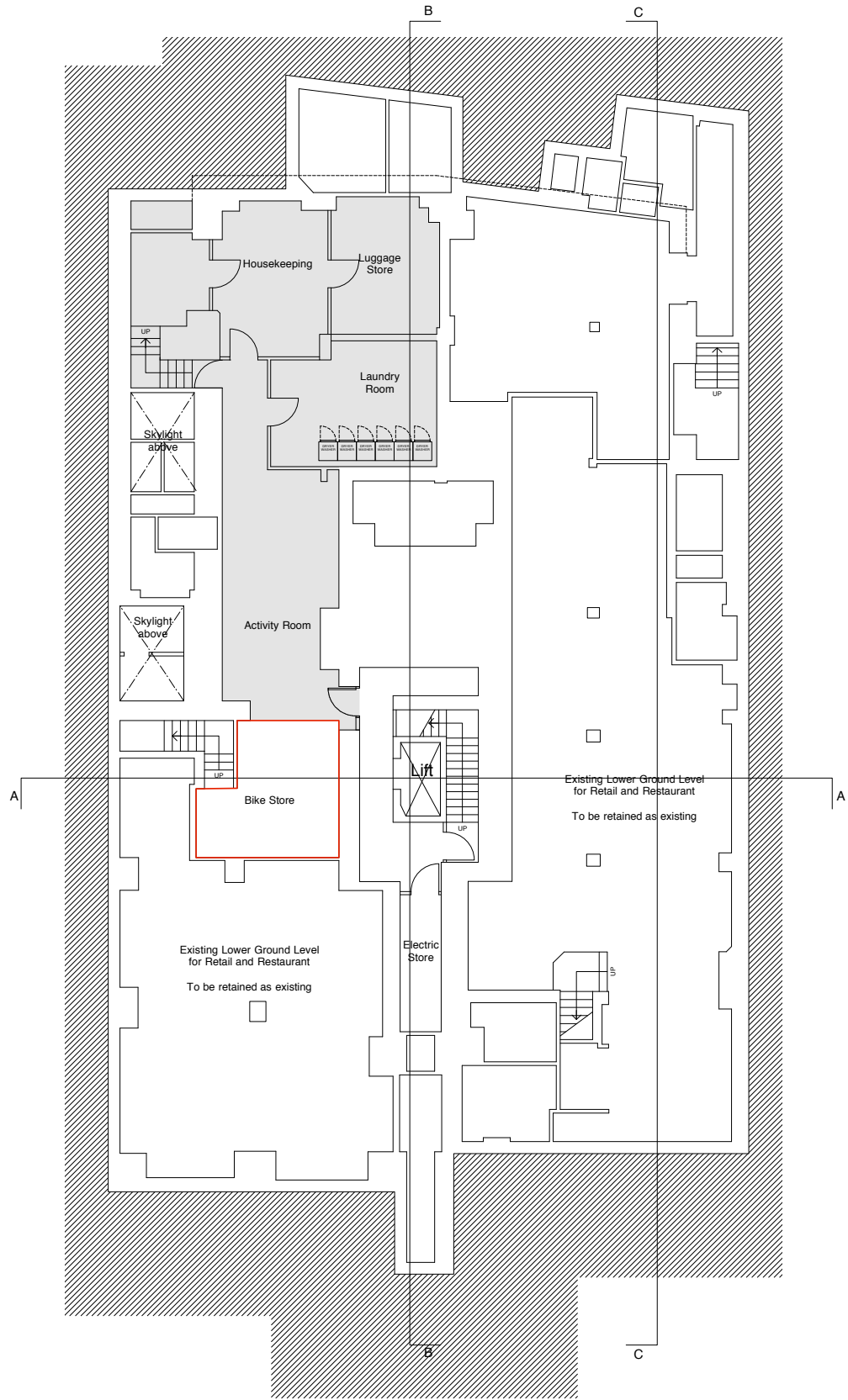
Minimum Bedroom Size - 1 Bed: 9.0 M<sup>2</sup> [96.9 SF]

Minimum Bedroom Size where Kitchen not  
Enclosed: 12.0 M<sup>2</sup> [129.2 SF]

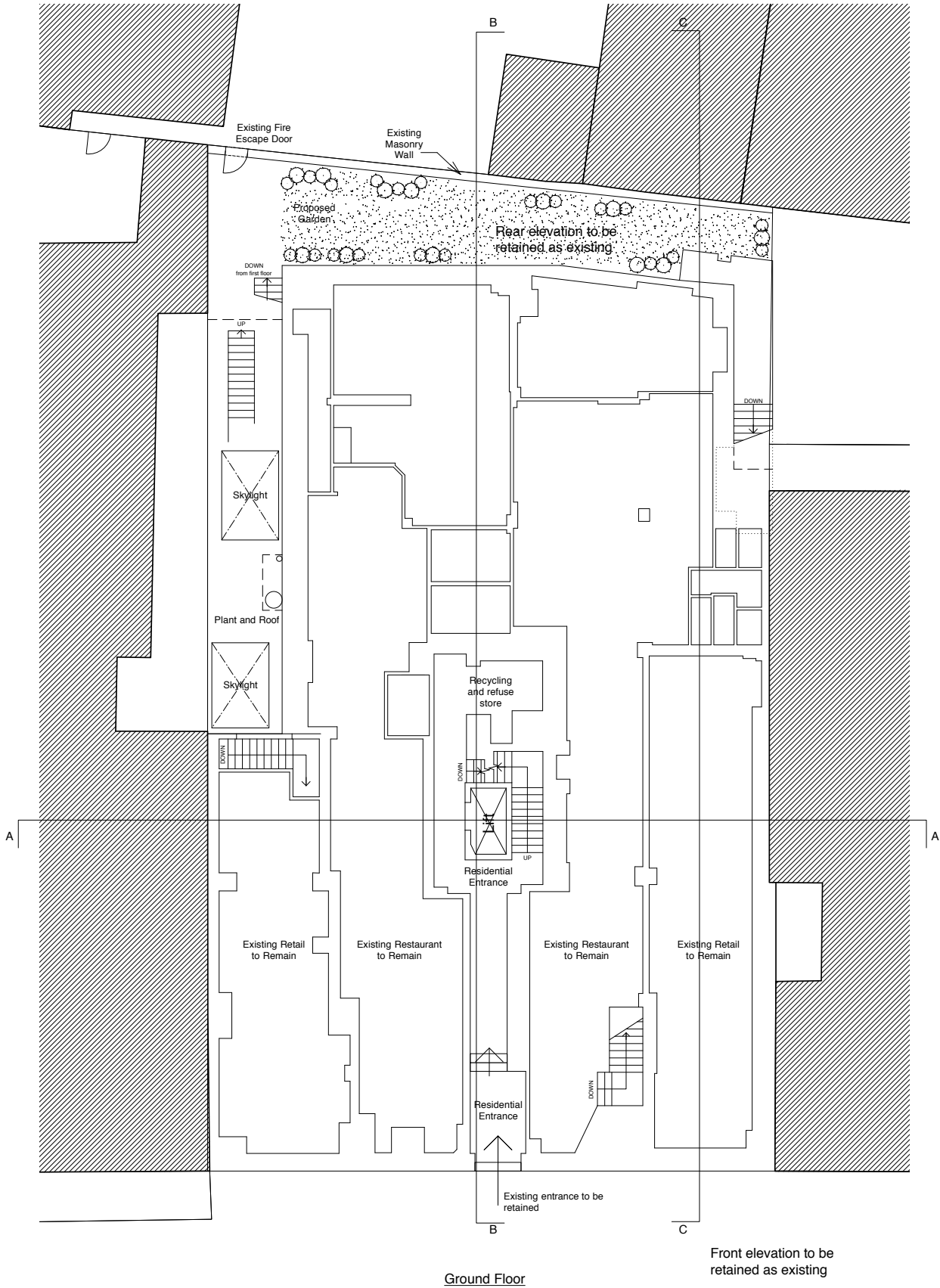
Minimum Kitchen/Diner Size - up to 4 persons: 8.0  
M<sup>2</sup> [86.1 SF]

Minimum Kitchen Work Length - up to 4 persons: 2.3  
M [7.6 Ft]

Minimum Full Bath Size: 2.8 M<sup>2</sup> [ 30.1 SF]



Lower Ground Floor



Ground Floor

SOUTHAMPTON ROW

A	12.4.2012	Bike store added	
letter	date	revision	initial

date March 2012

job name

Southampton Row, London

title

Proposed - Lower Ground  
& Ground Floor Plans

scale

1:100 @ A1

job no.

drawing no.

1130

G103A