



Rugby School

**Rokeby House  
Lamb's Conduit Street  
Camden  
WC1N 3LX**

## **Proposed Passenger Lift & Penthouse Extension**



### **PROPOSED 3D VIEWS**

November 2011



architecture  
with knowledge

ahp ltd, 18 St. Johns Hill, Sevenoaks, Kent, TN13 3NP  
Tel: 01732 463916 Email: info@ahpltd.co.uk Web: www.ahpltd.co.uk



Rokeby House - Proposed South Elevation Viewed From Rear of Spens House

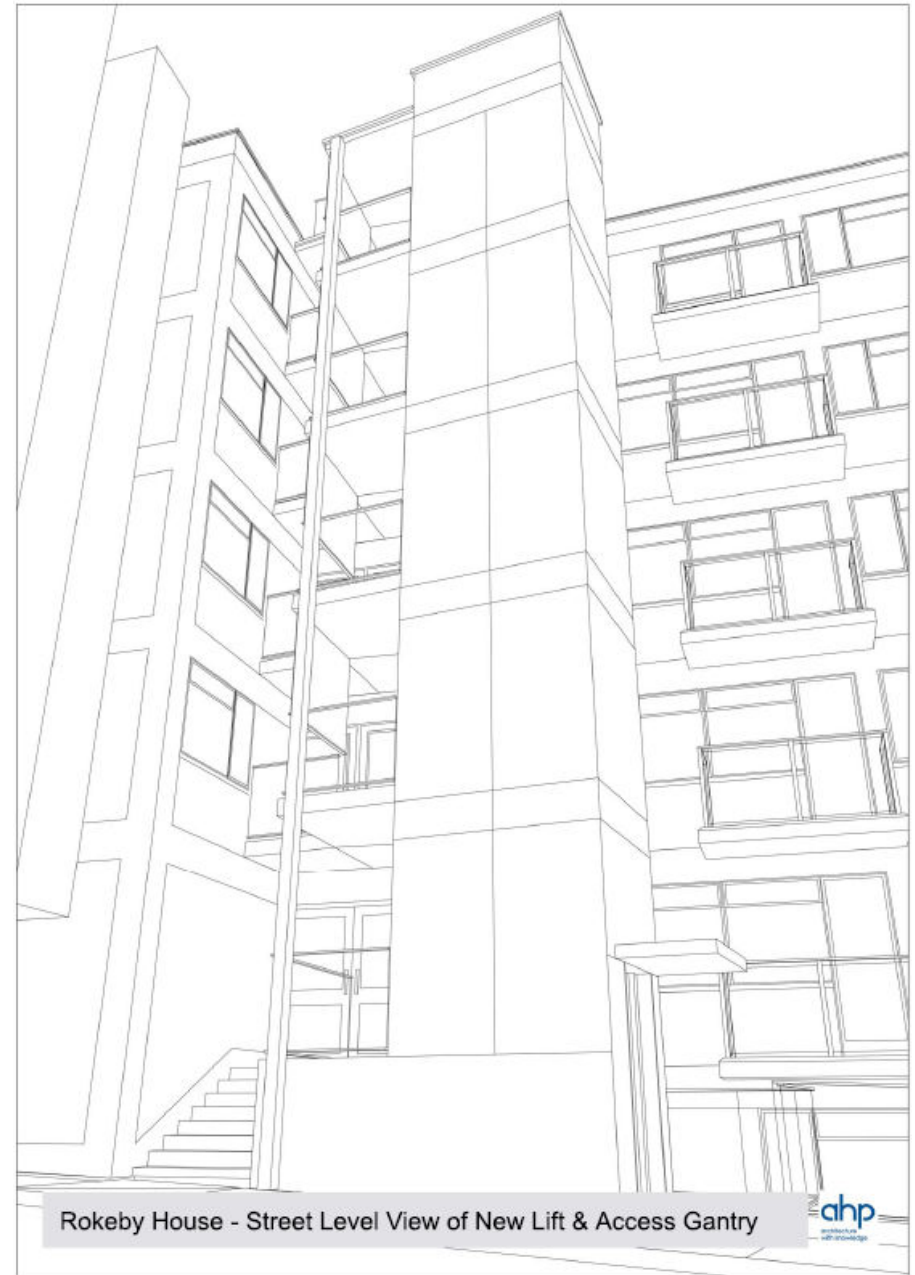


Rokeby House - Proposed South Elevation Looking West from Long Yard



Rokeby House - Proposed Aerial View Looking West







Rokeby House - Aerial View of New Lift & Access Gantry