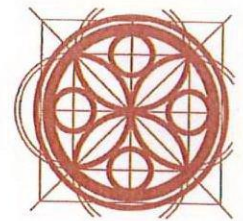




By Appointment to
Her Majesty The Queen
Building Facade Restoration
and Conservation



PAYE

David Willats
Structuretone Ltd
Royal College of General Practitioners
30 Euston Square
London
NW1 2ER

14th March 2012

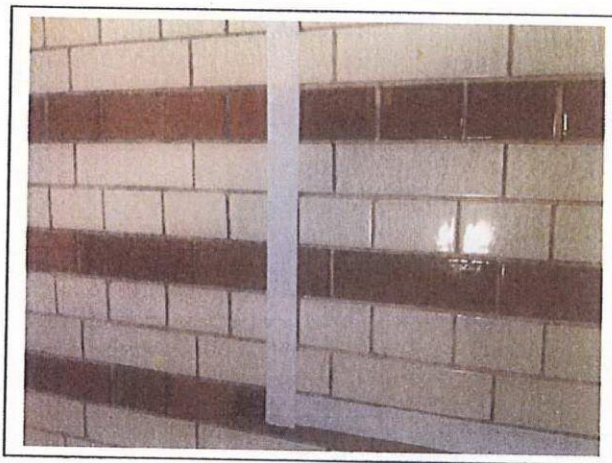
By Post & E-mail
Ref:AH/DW/11211/L10216
dave.willats@structuretone.co.uk

Dear David,

30 Euston Square – Cleaning Sample Approval

Further to the recent cleaning trial process and subsequent approval we confirm the cleaning process we are adopting as follows:

1. General Clean to Tiles / Faience:



In accordance with the approved cleaning sample, as pictured above, we are to use the following method:

Jangro Multi Purpose Cleaner is an alkaline liquid hard surface cleaner and degreaser. The cleaner will be applied using hand held spray guns, applied onto a cloth and then onto the relevant tiled area. Once applied, the material will be left to dwell.



PAYE Stonework & Restoration Ltd
Stationmasters House, Mottingham Station Approach, London SE9 4EL
Tel: 020-8857 9111 Fax: 020-8857 9222
e-mail: PAYE@PAYE.net Website: www.PAYE.net
Reg. No. 2743908 VAT No. 608 0053 77





-2-

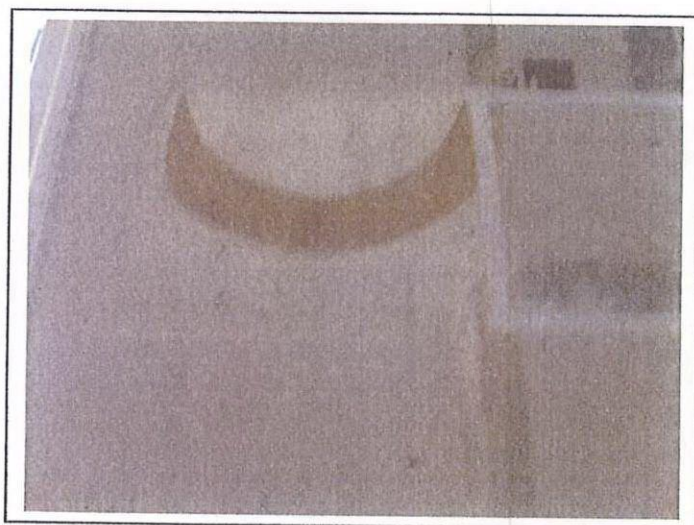
The compatibility test carried out on the stair core allowed us to ascertain the thickness and dwell time of the material.

Progressively apply the cleaner to affected areas and leave to dwell in accordance with the results from the compatibility test.

Following this dwell period, the cleaner is removed and the substrate is polished using hand towels.

Polythene sheeting will be dressed down onto the floor slab with saw dust laid over, locally when the cleaner is being removed to capture any waste water.

Paint / Artex Removal

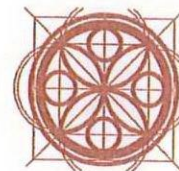


In accordance with the approved cleaning sample, as pictured above, we are to use the following method:

Kling-Strip is a thixotropic paste which, when applied to the surface, will gradually dissolve and absorb the paint / artex. The gel can then be carefully scraped off to expose the tiled substrate behind.

The compatibility test carried out on the ground floor allowed us to ascertain the thickness and dwell time of the material.

Progressively apply the paste to affected areas to a thickness applicable following the compatibility test.



-3-

Once fully coated, the tiled walls will be wrapped in a thin polythene film of cling film. The paste is then allowed to absorb the paint for a period of approximately 1 week.

Following this dwell period, the poultice is removed and the substrate is polished using hand towels.

Polythene sheeting is dressed down onto the floor slab, locally when the poultice is being removed to capture the waste poultice.

Waste material shall be bagged up and the bags will be taped. The bags will be removed to a central area where they will be carted off site by the main contractor.

Assuring you of our continued best attention to your requirements.

Yours sincerely,

Adam Hickey
Project Manager
PAYE

CC: M Kember , A Ashton