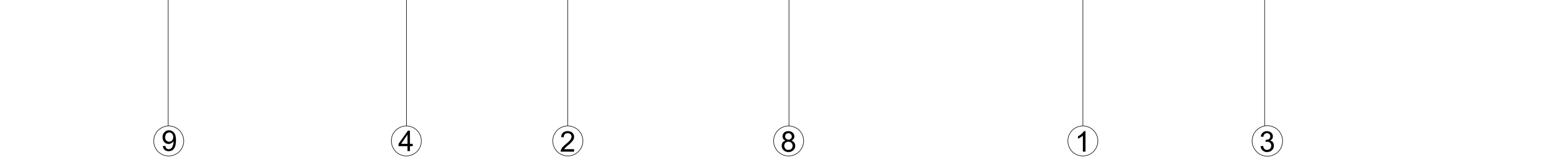
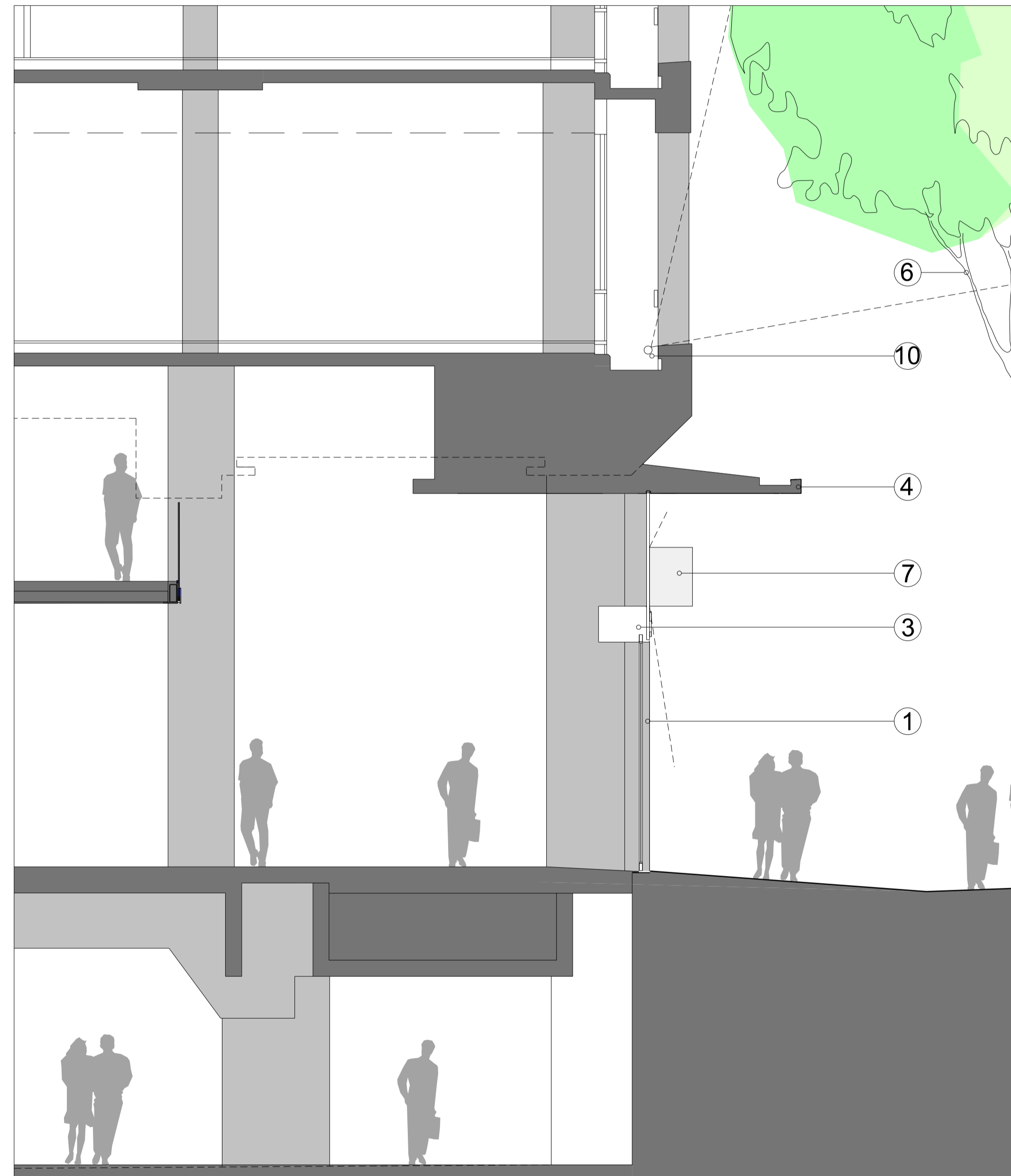


SITE KEY



1
PL.110 Proposed detailed elevation 1.50 @ A1



2
PL.110 Proposed detailed section 1.50 @ A1

PROPOSED



Notes:

Detail Sections/Elevations for indicative purposes only

Materials Key

- ① Proposed glazed shop front
- ② Metal cladding to column
- ③ Glazing transom/signage band
- ④ Proposed canopy
- ⑤ Integrated lighting to column detail
- ⑥ Existing trees
- ⑦ Projecting signage to shop front with integrated lighting
- ⑧ Automatic sliding glass doors
- ⑨ Metal skirting / kick plate detail
- ⑩ Position for 'effect' tree lighting within existing balcony zone

16.03.12 Issued for planning

Revision:

ORMS

Architecture
Design

1 Pine Street London EC1R 0JH
T 0207 833 8533 F 0207 837 7575
E orms@orms.co.uk

Project **CENTRAL CROSS**

Drawing title **Indicative Bay Elevations and Sections**

Scale 1:50 @ A1 Drwg. No.

Date December '11 **1917 PL 110** Rev. 1

Status For information For tender For construction

Do not scale. All dimensions to be confirmed on site. Information contained in this drawing is the sole copyright of ORMS Designers & Architects Ltd. and is not to be reproduced without permission.