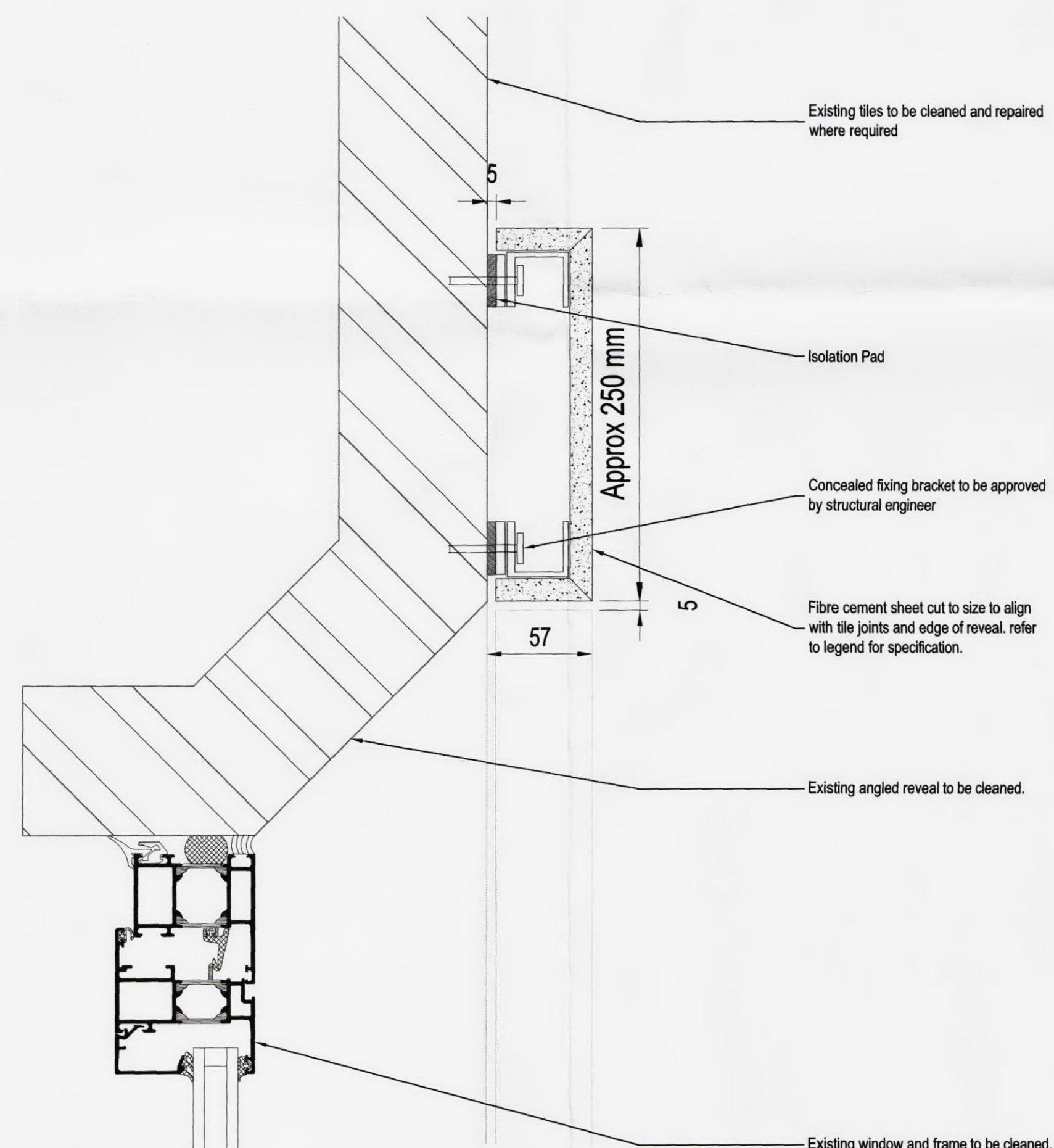
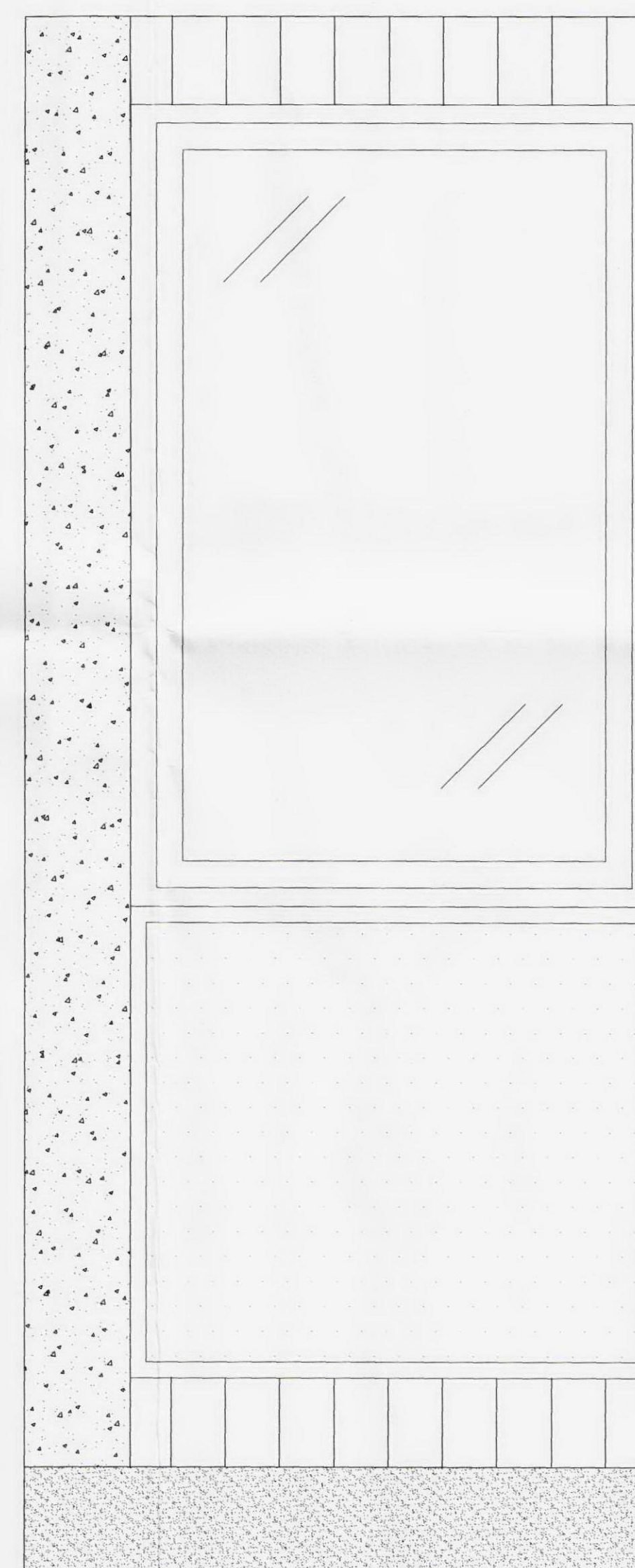


01 Detail Plan Section of Facade Elements
Scale 1:2.5



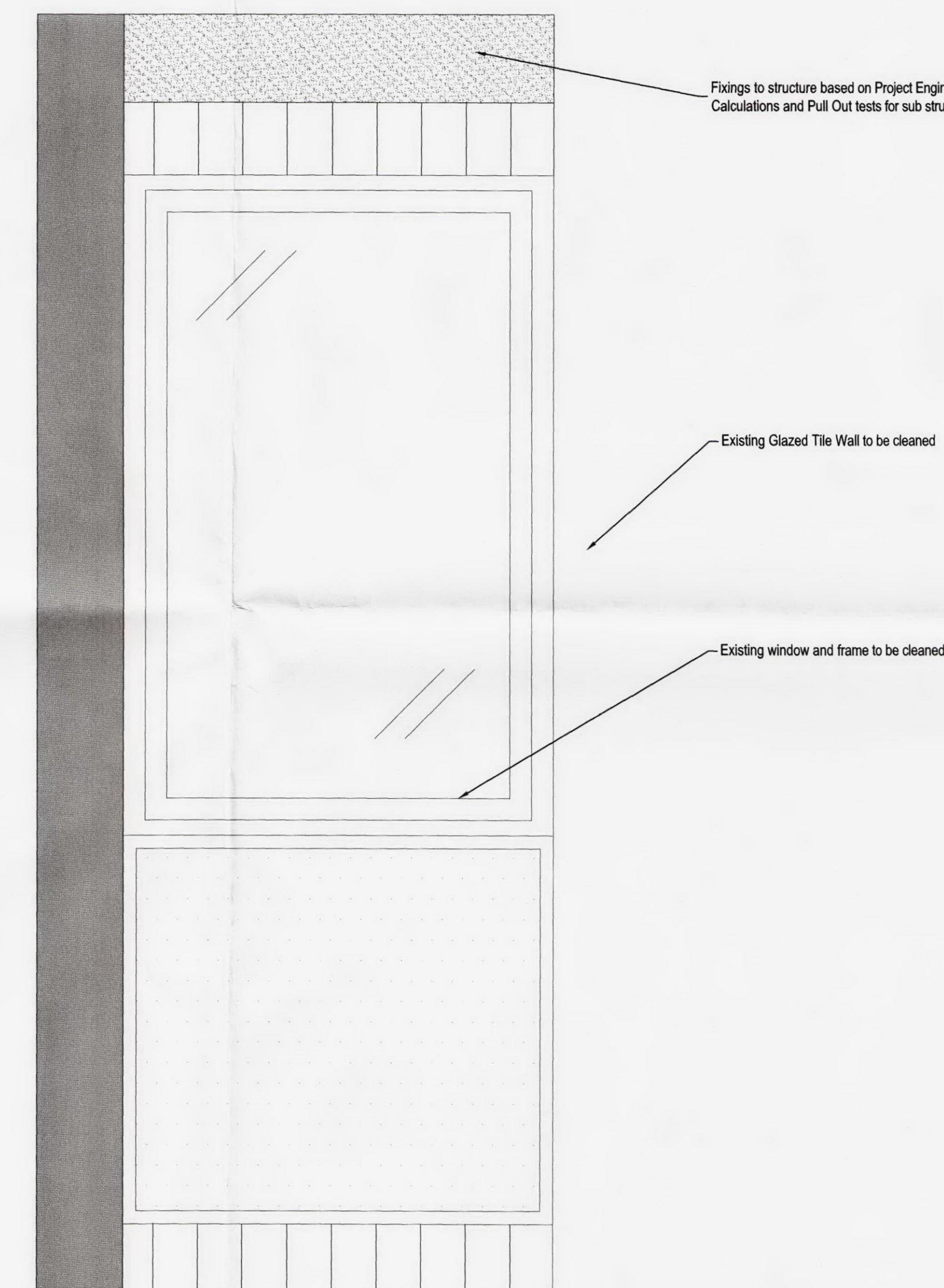
02 Head of Window Detail Section
-- Scale 1:2.5



03 Typical Window Elevation
-- Scale 1:10

- GENERAL NOTES:**

01. RAINSCREEN CLADDING SHOWN IS TYPICAL AND IS TO BE APPLIED TO LIGHTWELLS (1-3 INCLUSIVE)
02. CLADDING MATERIALS
 1. CLADDING SOLUTIONS - FIBRE C - COLOUR - IVORY FINISH - MATT
 2. CLADDING SOLUTIONS - FIBRE C - COLOUR - VENICE GREEN FINISH - MATT
 3. CLADDING SOLUTIONS - FIBRE C COLOUR - SILVERGREY FINISH - MATT
03. THE 3 COLOURS OF PANEL TO BE APPLIED RANDOMLY FOR ALL WINDOWS. 2 COLOURS PER WINDOW.
04. ALL LIGHT WELLS TO BE THOROUGHLY CLEANED AND ANY BROKEN OR MISSING TILES REPLACED.



Fixings to structure based on Project Engineers
Calculations and Pull Out tests for sub structure

Existing Glazed Tile Wall to be cleaned

Existing window and frame to be cleaned

[illegible]

1. The contractor is responsible for checking dimensions. Any discrepancy to be verified with the architects before proceeding with any works.
2. Where an item is covered by different scales the larger scale applies.
3. Do not scale drawings.
4. Flaired dimensions to be worked in all cases.

SPPARC

20 GOLDEN SQUARE
LONDON W1F 9JL
T +44 (0) 20 7734 4100
F +44 (0) 20 7534 9930
W www.spparcstudio.com

Job Title **DENNING HOUSE, 90 CHANCERY LANE**

Drawing Title

**LIGHT WELL CLADDING
DETAIL S**

Scale (@A1)	Date	Drawn
1:2.5	10.04.2012	CE

1.2.5	10.04.2012	GP
Checked		
TDM		

Client

CORDEA SAVILLS

Project No.	Dwg No.	Rev.
1101	DH-P-70-MF-801	P1

PLANNING

GENERAL ARRANGEMENT