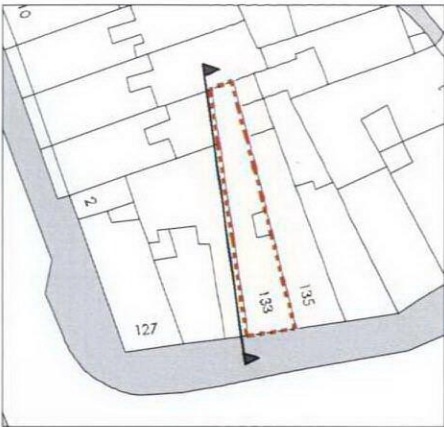


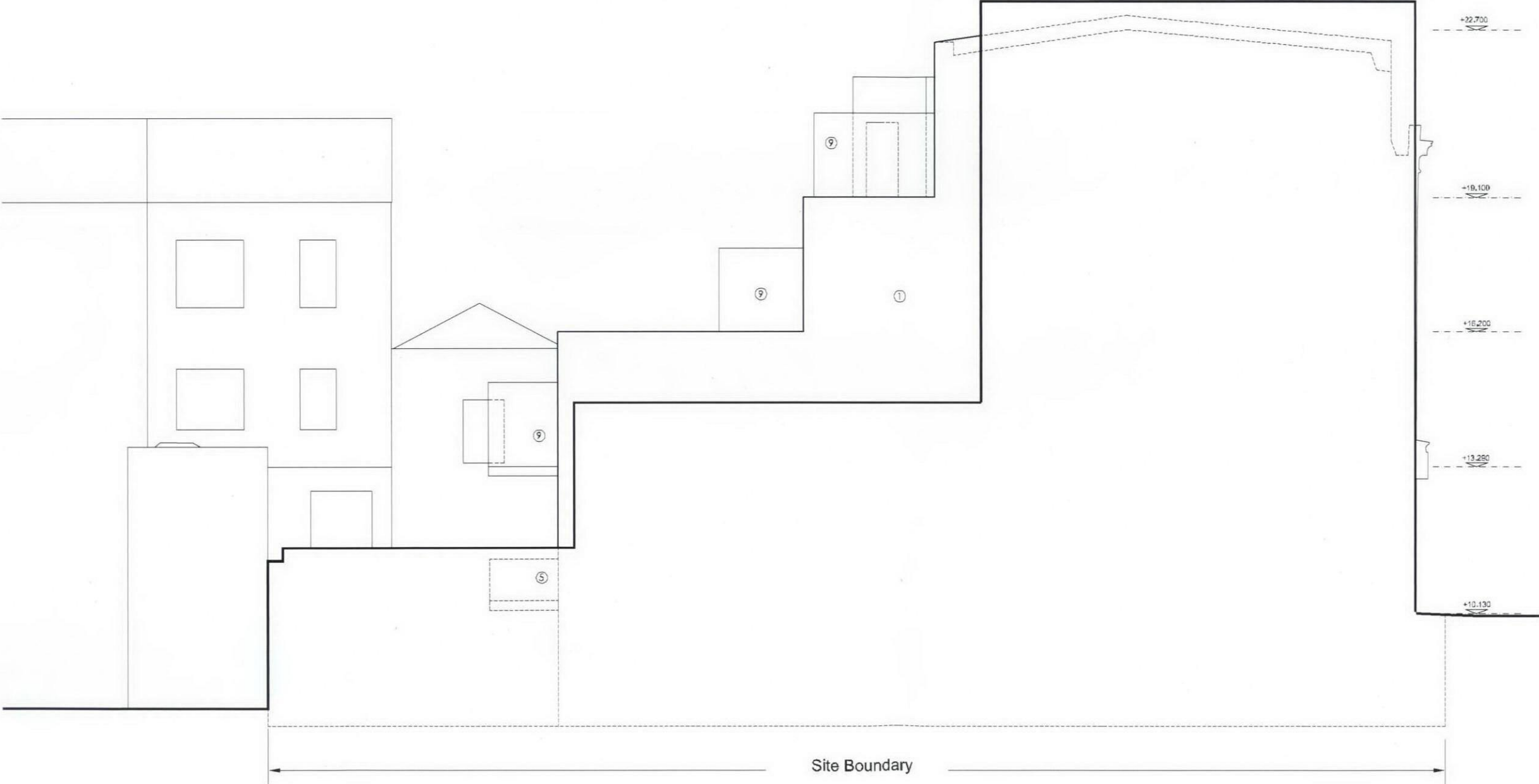
Notes

1. Copyright of this drawing remains the sole property of Bellis Cooley Architects unless otherwise assigned in writing.
2. Do not scale from this drawing. Figured dimensions are to be used in all cases with any discrepancies reported to the Architect prior to commencement of any work.
3. Setting out is based on the survey only. All dimensions to be checked on site prior to construction/erection.



Extend of neighbouring building as per Approved Planning Application
Ref No: 2011/3058/P

- Material Schedule**
- ① Facing Brick to Approved Sample
 - ② Tripartite sash timber dormer window
 - ③ Dark Grey Aluminium PC Glazing system to Approved Sample
 - ④ Dark grey (painted) timber glazing system to approved sample
 - ⑤ Glass Balustrade Balcony
 - ⑥ Translucent film applied on glass for privacy
 - ⑦ Dark Grey Render
 - ⑧ Timber Door
 - ⑨ 84% transmittance translucent glass privacy screen



① Elevation South

Approved Variation submitted for Planning		AT	06-04-17
Rev.	Description	By	Date

Bellis Cooley Architects

Studio 201 16 Baldevins Gardens London EC1N 7TU
t: 020 3178 4448 www.bellis.co.uk

CONTRACT

Redevelopment of
133 Kings Cross Road WC1X 9BJ

DRAWING TITLE

Proposed Elevation South

DRAWN BY	DATE	CHECKED
AT	Feb 2012	RC
SCALE	SIZE	STATUS
1:50	A1	Planning

DRAWING No. 0548 - 202 REV 8