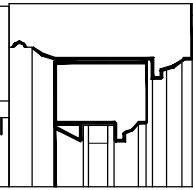


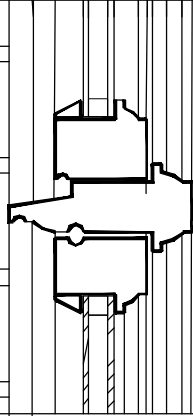
head detail to match
existing

mastic sealant to all
external joining surfaces

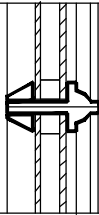


transom detail to match
existing

sepele joinery white
painted as specification



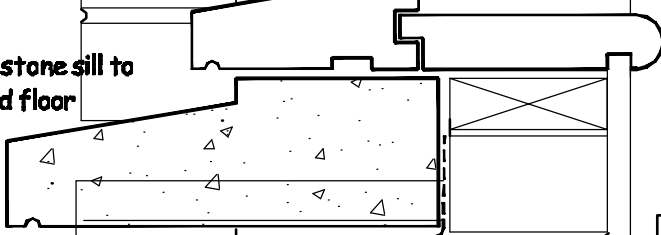
double glazed window
units timber sections to
match existing detail
moulding's but adapted
in thickness to allow for
double glazing



casement window sill
detail

concrete or stone sill to
match ground floor
sill

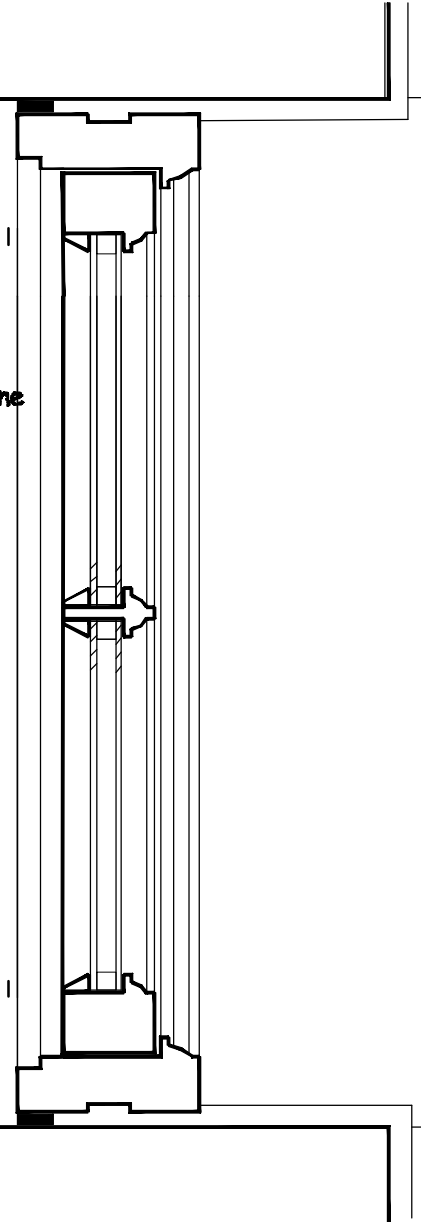
sill to sit on code 4 lead
flashings turned up at
ends



**Proposed section
through new window
joinery and sill @ scale 1:5**

**Typical proposed plan
through new window joinery
and sill scale @ 1:5**

concrete or stone
sill to match
ground floor sill



**3 Rosecroft Avenue
Hampstead
London NW3 7QA**

**proposed window details
020312/W/20**