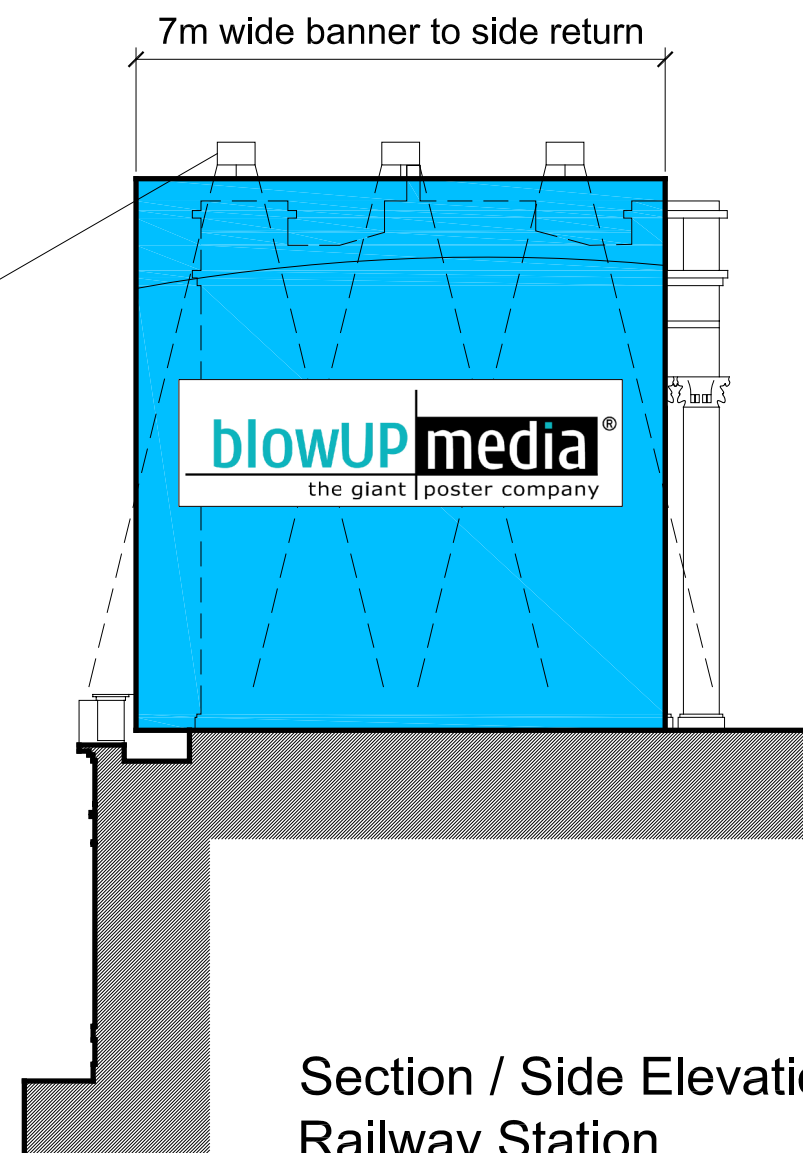


Front Elevation to Pentonville Road
Elevations as Proposed



Section / Side Elevation to
Railway Station

New external down lighting to illuminate banner location / extent only.

Banner to be secured to new scaffold structure set over projecting ground floor / behind lower level parapet.

Banner area to achieve an overall display of 21m wide x 7m high, wrapping around the two available elevations. This will be split approximately 14m to the principle elevation and 7m to the secondary / side elevation.

Existing building facade.

Scaffold design and structural assessment by others.

blowUP media®
the giant poster company

A3

The Media Centre, 6th Floor,
3-8 Carburton Street, London,
W1W 5AJ
tel. +44 (0) 20 7307 70 20
fax. +44 (0) 20 7307 70 30

www.blowup-media.co.uk

PROJECT:
257-259 Pentonville Road
London
Scale: 1:100 DATE: Mar2012
DRAWING NO. 005