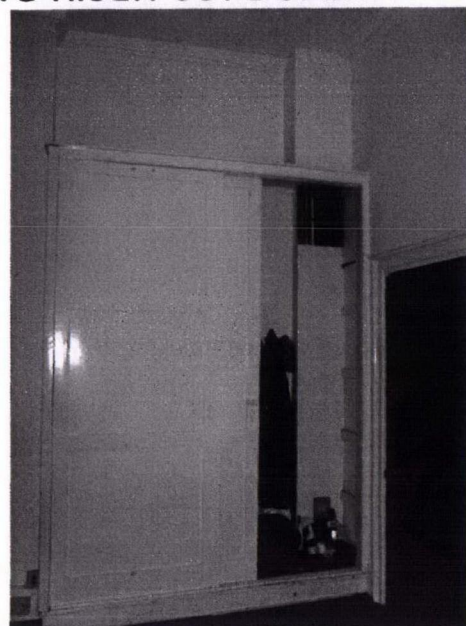
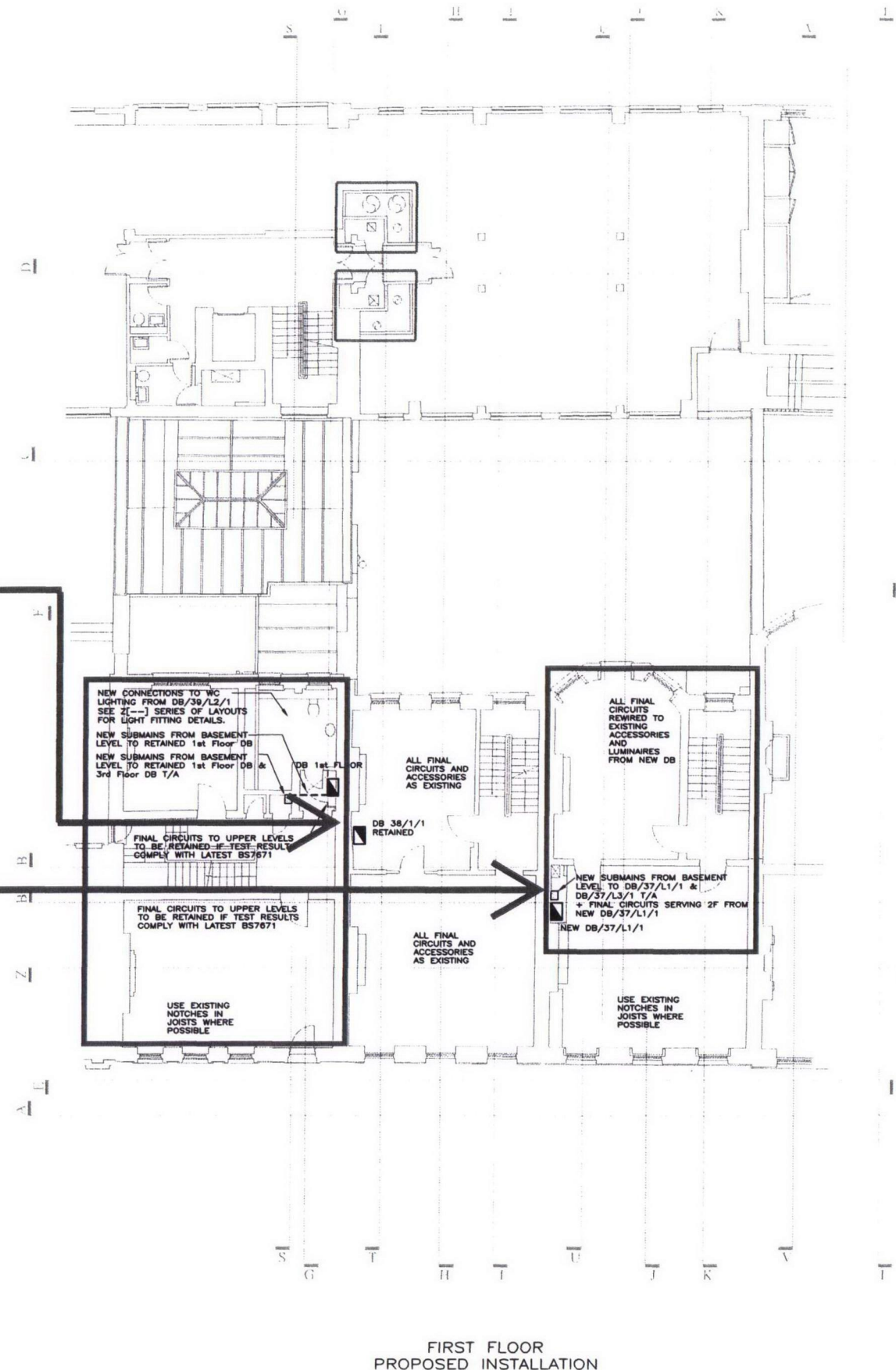




DISTRIBUTION BOARD RETAINED WITHIN EXISTING RISER CUPBOARD



NEW ELECTRICAL SUBMAINS & DISTRIBUTION BOARDS WITHIN EXISTING RISER CUPBOARD



NOTES:

1. THE ENTIRE LV DISTRIBUTION SYSTEM SHALL BE DESIGNED, INSTALLED, TESTED AND COMMISSIONED IN ACCORDANCE WITH THE REQUIREMENTS OF THE IEE WIRING REGULATIONS (17TH EDITION BS 7671:2001).
2. READ IN CONJUNCTION WITH STAGE C REPORT AND V[20]23- SCHEMATIC LAYOUTS.
3. LOCATIONS OF EXISTING SERVICES TO BE CONFIRMED BY SURVEY.
4. DO NOT SCALE FROM THIS DRAWING. SETTING OUT OF BUILDERSWORK AND ARCHITECTURAL ELEMENTS TO BE TAKEN FROM ARCHITECT'S DRAWINGS.
5. M&E CONTRACTOR TO PRODUCE FABRICATION DRAWINGS IN ADVANCE OF COMMENCEMENT ON SITE DESCRIBING EXACT ROUTES OF NEW INSTALLATION.

LEGEND:

- EXISTING SERVICES TO BE RETAINED
- EXISTING SERVICES TO BE REMOVED
- NEW SERVICES RUNNING ALONG EXISTING ROUTES AT LOW LEVEL
- NEW SERVICES RUNNING ALONG EXISTING ROUTES AT HIGH LEVEL
- NEW SERVICES CONCEALED AT LOW LEVEL IN FLOOR
- T/A NEW SERVICES RISING TO ABOVE
- T/B NEW SERVICES DROPPING TO BELOW
- DISTRIBUTION BOARD

2012/ 1785/L

PHASE 1B

C	30/01/12	FOR PLANNING - PHASE 1B
B	15/08/11	FOR PRICING - PHASE 1B
A	24/08/11	FOR PRICING
*	20/08/11	INFORMATION
rev	date	description

MAX FORDHAM

Max Fordham LLP
42-43 Gloucester Crescent
London
NW1 7PE
T: +44 (0) 20 7267 5161
F: +44 (0) 20 7482 0329
maxfordham.com

Registered in England No. 03080206
Registered Office 42-43 Gloucester Crescent London NW1 7PE

architect
**WRIGHT AND WRIGHT
ARCHITECTS**

job title
**ARCHITECTURAL ASSOCIATION
WORKSHOP PROJECTS**

project leader	date	scale (at A1)
MCG	JUN 2011	1:100

drawing title
**PROPOSED ELECTRICAL
INSTALLATION & DIVERSIONS
FIRST FLOOR nr. 37-39**

job no	dwg no	rev
4328	V[---]9321	/C