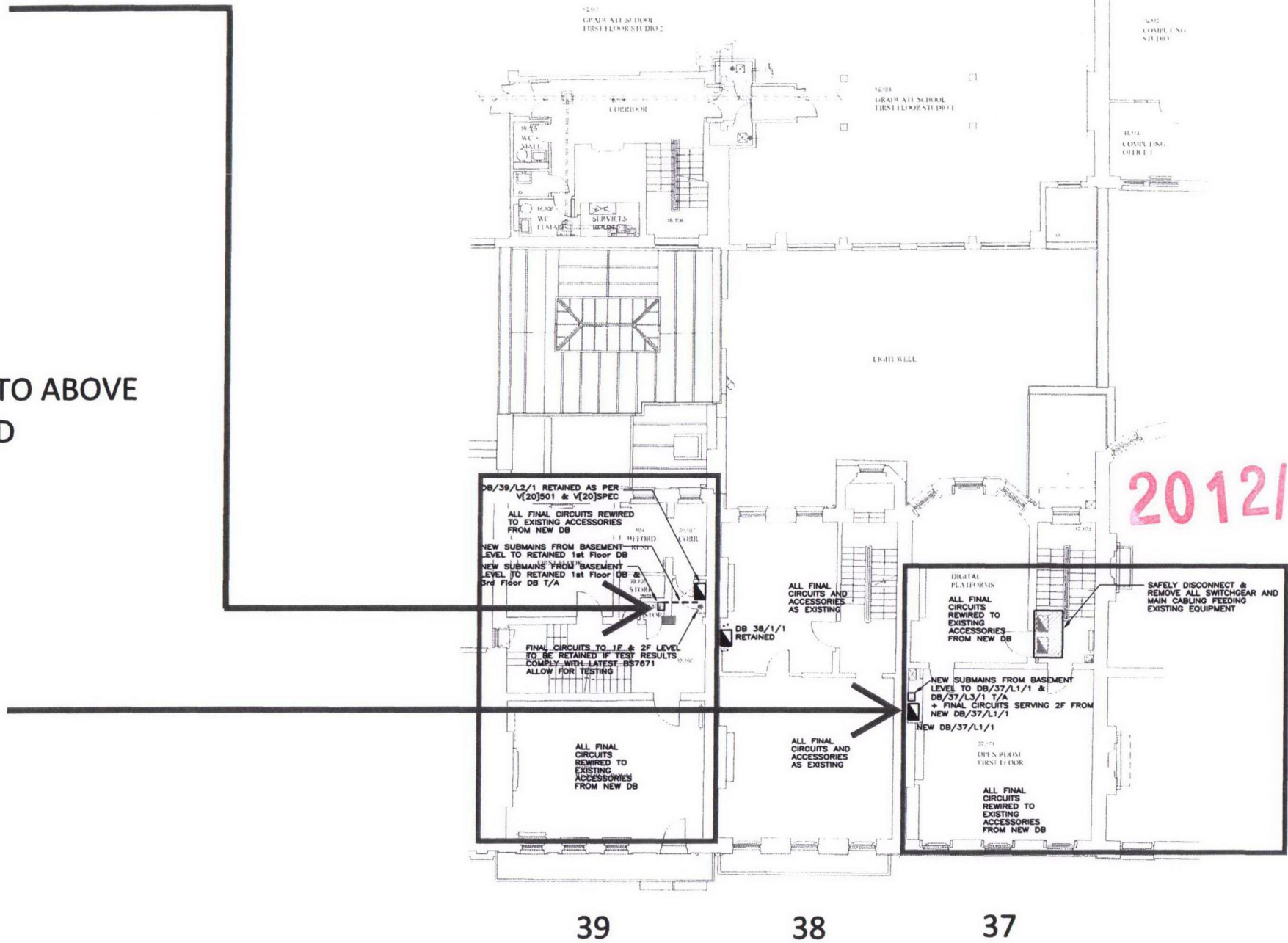




NEW ELECTRICAL SUBMAINS RISE TO ABOVE  
WITHIN EXISTING RISER CUPBOARD



NEW ELECTRICAL SUBMAINS & DISTRIBUTION BOARDS  
WITHIN EXISTING RISER CUPBOARD



- NOTES:
1. THE ENTIRE LV DISTRIBUTION SYSTEM SHALL BE DESIGNED, INSTALLED, TESTED AND COMMISSIONED IN ACCORDANCE WITH THE REQUIREMENTS OF THE IEE WIRING REGULATIONS (17TH EDITION BS 7671:2001).
  2. READ IN CONJUNCTION WITH STAGE C REPORT AND V(20)23- SCHEMATIC LAYOUTS.
  3. LOCATIONS OF EXISTING SERVICES TO BE CONFIRMED BY SURVEY.
  4. DO NOT SCALE FROM THIS DRAWING. SETTING OUT OF BUILDERSWORK AND ARCHITECTURAL ELEMENTS TO BE TAKEN FROM ARCHITECT'S DRAWINGS.
  5. MAKE CONTRACTOR TO PRODUCE FABRICATION DRAWINGS IN ADVANCE OF COMMENCEMENT ON SITE DESCRIBING EXACT ROUTES OF NEW INSTALLATION.

- LEGEND:
- EXISTING SERVICES TO BE RETAINED
  - EXISTING SERVICES TO BE REMOVED
  - NEW SERVICES RUNNING ALONG EXISTING ROUTES AT LOW LEVEL
  - NEW SERVICES RUNNING ALONG EXISTING ROUTES AT HIGH LEVEL
  - NEW SERVICES CONCEALED AT LOW LEVEL IN FLOOR
  - T/A NEW SERVICES RISING TO ABOVE
  - T/B NEW SERVICES DROPPING TO BELOW
  - DISTRIBUTION BOARD

2012/ 1785/L

PHASE  
1B

C	30/01/12	FOR PLANNING - PHASE 1B
B	15/08/11	FOR PRICING - PHASE 1B
A	24/06/11	FOR PRICING
*	20/06/11	INFORMATION
rev	date	description

MAX FORDHAM

Max Fordham LLP  
42-43 Gloucester Crescent  
London  
NW1 7PE  
T: +44 (0) 20 7267 5161  
F: +44 (0) 20 7482 0329  
maxfordham.com

Registered in England No. 06000026  
Registered Office 42-43 Gloucester Crescent London NW1 7PE  
architect  
**WRIGHT AND WRIGHT**  
ARCHITECTS

job title  
**ARCHITECTURAL ASSOCIATION  
WORKSHOP PROJECTS**

project leader date scale (at A1)  
**MCG JUN 2011 1:100**

drawing title  
**EXISTING ELECTRICAL  
INSTALLATION & DIVERSIONS  
FIRST FLOOR nr. 37-39**

job no dwg no rev  
**4328 V[-]9320 /C**

FIRST FLOOR  
ENABLING WORKS & DIVERSIONS  
SEE ARCHITECTURAL INFORMATION FOR  
FURTHER DETAILS OF DEMOLITIONS