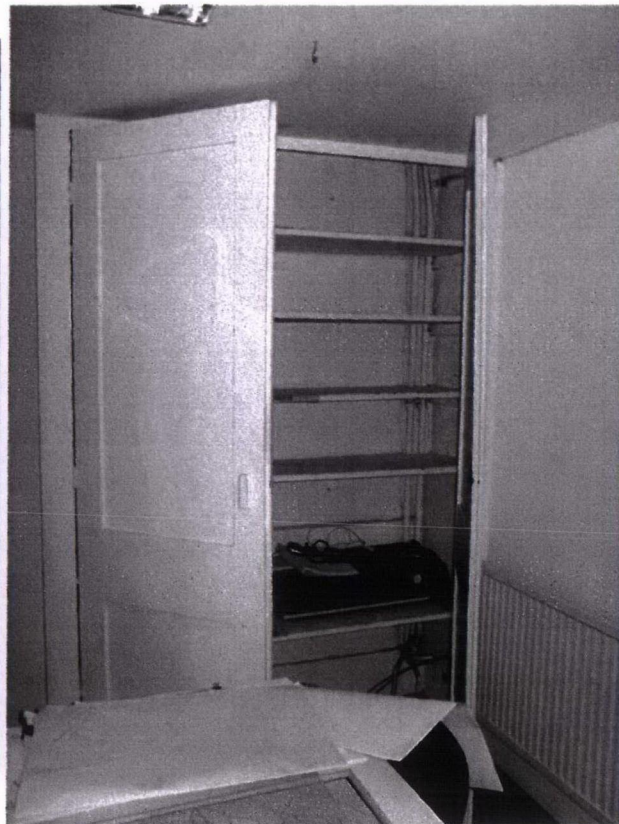
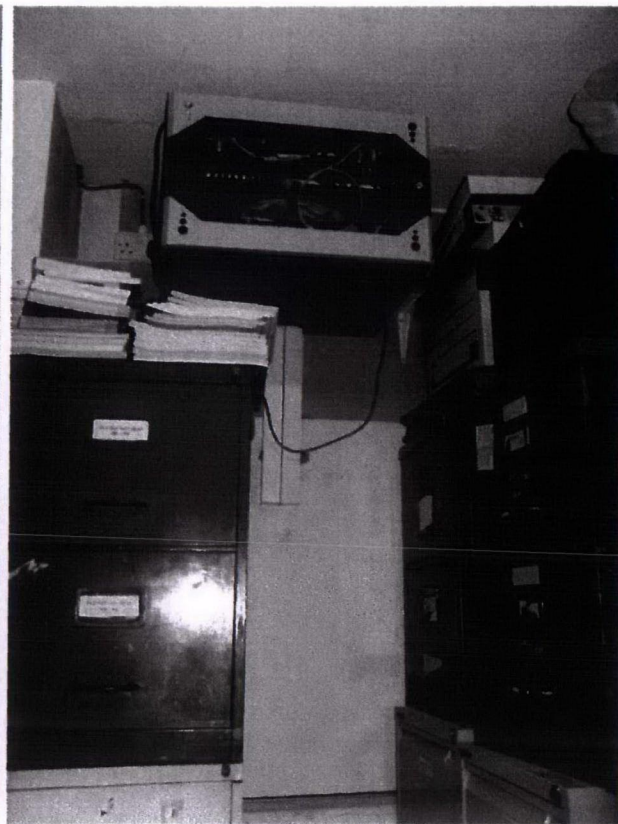




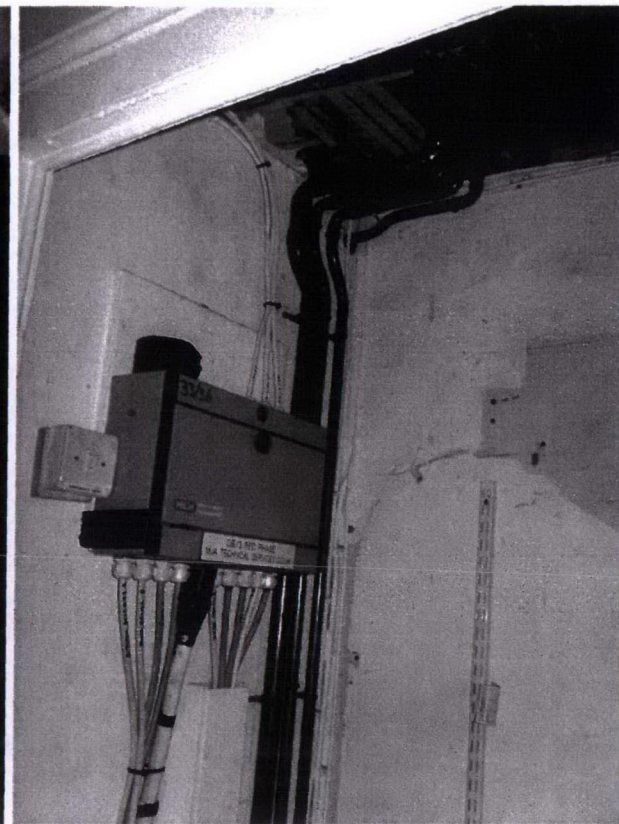
NEW DISTRIBUTION BOARD
CONCEALED WITHIN CUPBOARD



NEW DISTRIBUTION BOARD
CONCEALED WITHIN EXISTING
CUPBOARD

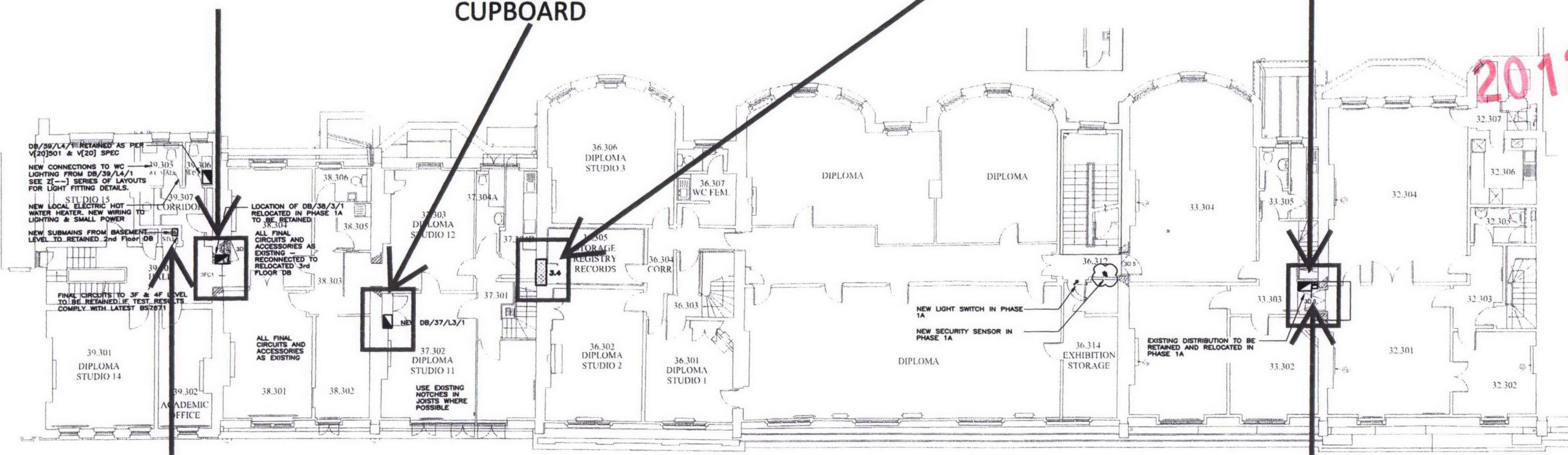


DISTRIBUTION BOARD RELOCATED AT
HIGH LEVEL WITHIN CUPBOARD LINING



- NOTES:
1. TO BE READ IN CONJUNCTION WITH ALL MF CONSTRUCTION INFORMATION
 2. DIVERSION AND RELOCATION OF EXISTING SERVICES SHOWN ARE SUBJECT TO CONFIRMATION BY M&E CONTRACTOR'S SURVEY
 3. DO NOT SCALE FROM THIS DRAWING. SETTING OUT OF BUILDERSWORK AND ARCHITECTURAL ELEMENTS TO BE TAKEN FROM ARCHITECT'S DRAWINGS
 4. M&E CONTRACTOR TO PRODUCE FABRICATION DRAWINGS IN ADVANCE OF COMMENCEMENT ON SITE DESCRIBING EXACT ROUTES OF NEW INSTALLATION
 5. LATERAL CONNECTIONS B14 & B15:
B14 - NO KNOWN SERVICES IMPLICATIONS
B15 - BT CABLEING PRESUMED REDUNDANT TO BE REMOVED REFER TO MF SPECIFICATIONS FOR FURTHER DETAILS
 6. THE ENTIRE LV DISTRIBUTION SYSTEM SHALL BE DESIGNED, INSTALLED, TESTED AND COMMISSIONED IN ACCORDANCE WITH THE REQUIREMENTS OF THE IEE WIRING REGULATIONS (17TH EDITION BS 7671:2001).
 7. READ IN CONJUNCTION WITH STAGE C REPORT AND V[20]23- SCHEMATIC LAYOUTS.

- LEGEND:
- EXISTING SERVICES TO BE RETAINED
 - EXISTING SERVICES TO BE REMOVED
 - NEW SERVICES RUNNING ALONG EXISTING ROUTES AT LOW LEVEL
 - NEW SERVICES RUNNING ALONG EXISTING ROUTES AT HIGH LEVEL
 - NEW SERVICES CONCEALED AT LOW LEVEL IN FLOOR
 - T/A NEW SERVICES RISING TO ABOVE
 - T/B NEW SERVICES DROPPING TO BELOW
 - DISTRIBUTION BOARD
 - LIGHT SWITCH



2012/1785/L

PHASE 1B

C	30/01/12	FOR PLANNING - PHASE 1B
B	06/08/11	FOR PRICING - PHASE 1B
A	24/06/11	FOR PRICING - PHASE 1B
*	20/06/11	INFORMATION
rev	date	description

MAX FORDHAM

Max Fordham LLP
42-43 Gloucester Crescent
London
NW1 7PE
T: +44 (0) 20 7657 5161
F: +44 (0) 20 7652 0329
maxfordham.com

Registered Office 42-43 Gloucester Crescent London NW1 7PE

architect
**WRIGHT AND WRIGHT
ARCHITECTS**

job title
**ARCHITECTURAL ASSOCIATION
WORKSHOP PROJECTS**

project leader date scale (at A1)
MCG JUN 2011 1:100

drawing title
**COMBINED ELECTRICAL & ELV
INSTALLATION & DIVERSIONS
THIRD FLOOR nr. 32-36**

job no. drawing no. rev
4328 V[-]9240 /C

REFER TO WW DRAWING P1A-434-LC
FOR FUTHER DETAILS

NEW ELEC SUBMAINS WITHIN EXISTING
RISER CUPBOARD
DIVERSIONS AGAINST
FUTURE LAYOUT