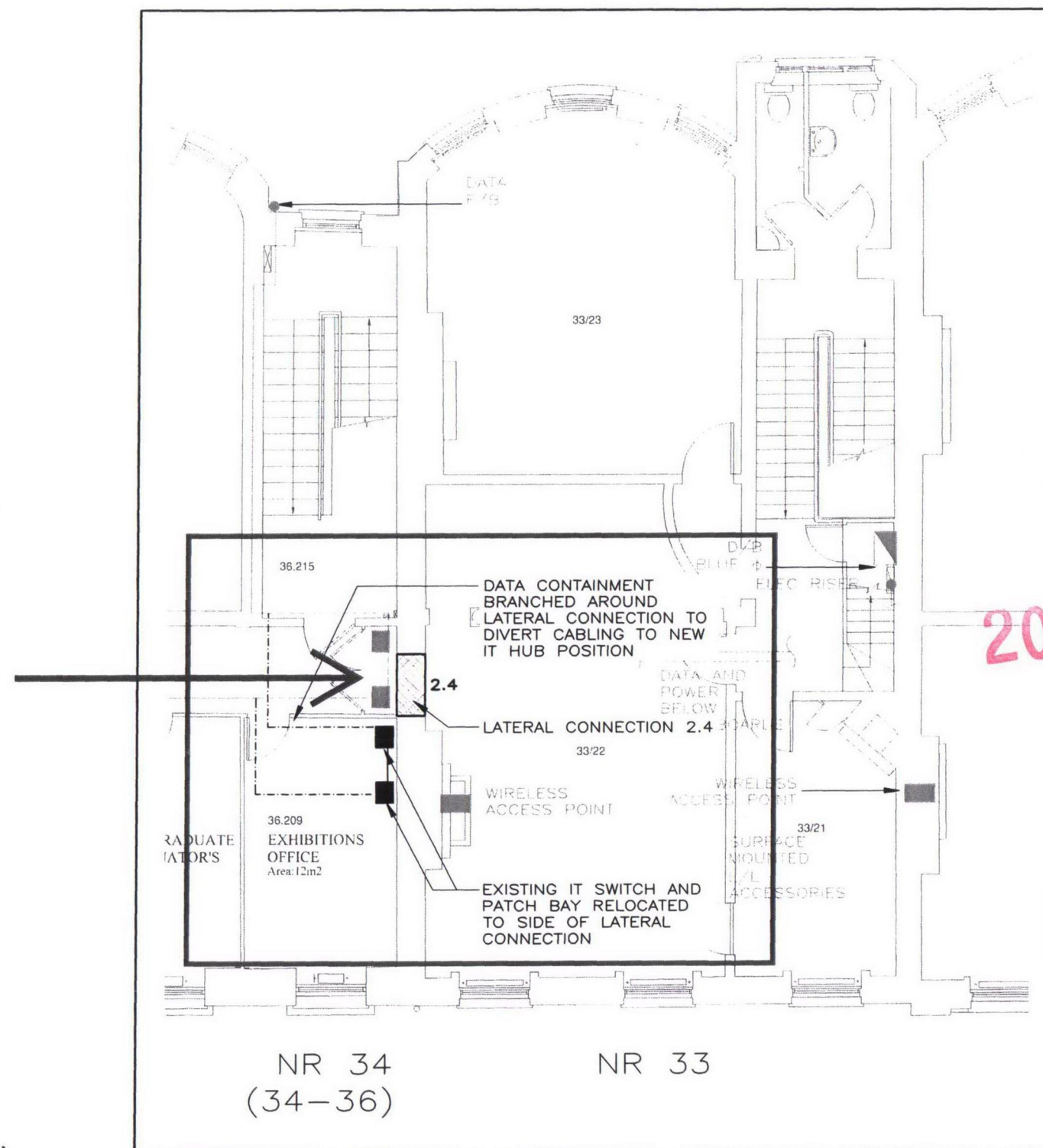




--- Indicative location of lateral connection

IMAGE 1

EXTRACT FROM WW DRAWING 429-LC
(REFER TO DRAWING FOR FURTHER INFORMATION)



DIVERSIONS AGAINST
FUTURE LAYOUT

- NOTES:
1. TO BE READ IN CONJUNCTION WITH ALL OTHER MF DOCUMENTATION ACCOMPANYING THIS DRAWING IN ISSUED PACKAGE OF INFORMATION.
 2. THE ENTIRE LV DISTRIBUTION SYSTEM SHALL BE DESIGNED, INSTALLED, TESTED AND COMMISSIONED IN ACCORDANCE WITH THE REQUIREMENTS OF THE IEE WIRING REGULATIONS (17TH EDITION BS 7671:2001).
 3. LOCATIONS OF EXISTING SERVICES TO BE CONFIRMED BY SURVEY BY CONTRACTOR.
 4. DO NOT SCALE FROM THIS DRAWING. SETTING OUT OF BUILDERSWORK AND ARCHITECTURAL ELEMENTS TO BE TAKEN FROM ARCHITECT'S DRAWINGS.
 5. MAKE CONTRACTOR TO PRODUCE FABRICATION DRAWINGS IN ADVANCE OF COMMENCEMENT ON SITE, DESCRIBING EXACT ROUTES OF NEW INSTALLATION.

- LEGEND:
- EXISTING SERVICES TO BE RETAINED
 - EXISTING SERVICES TO BE REMOVED
 - NEW SERVICES RUNNING ALONG EXISTING ROUTES AT LOW LEVEL
 - NEW SERVICES RUNNING ALONG EXISTING ROUTES AT HIGH LEVEL
 - NEW SERVICES CONCEALED AT LOW LEVEL IN FLOOR
 - T/A NEW SERVICES RISING TO ABOVE
 - T/B NEW SERVICES DROPPING TO BELOW

2012/1785/L

PHASE
1B

A 30/01/12 FOR PLANNING - PHASE 1B
* 15/08/11 FOR PRICING - PHASE 1B
rev date description eng

MAX FORDHAM

Max Fordham LLP
42-43 Gloucester Crescent
London
NW1 7PE
T: +44 (0) 20 7267 5161
F: +44 (0) 20 7482 0329
maxfordham.com

Registered in England No. 0308026
Registered Office: 42-43 Gloucester Crescent London NW1 7PE

architect
WRIGHT AND WRIGHT
ARCHITECTS

job title
ARCHITECTURAL ASSOCIATION
WORKSHOP PROJECTS

project leader date scale (at A1)
JR AUG 2011 1:50

drawing title
COMBINED ELECTRICAL & ELV
INSTALLATION & DIVERSIONS
SECOND FLOOR Nr. 33

job no. dwg no. rev
4328 V[-]J9230 /A