

- Bar Lights**
- single tube lights
 - 400mm (d) x 1500mm (l)
 - 3 x tungsten tube bulbs in each



- Bathroom Emergency Lights**
- LED
 - Aluminium finish
 - Same number and location as bathrooms lights

- Bathroom Lights**
- 4 x over Belfast sink
 - 4 x in cubicle
 - 300mm (L)
 - E27 filament bulb



- Filler lights**
- high level in ceiling
 - 80mm (d) x 130mm (l)
 - halogen birdies

PIR sensor



- Roastery Lights**
- double fluorescent tube light
 - 360mm(d) x 1500mm(l)
 - x 9 to sit in horizontal formation over roastery area

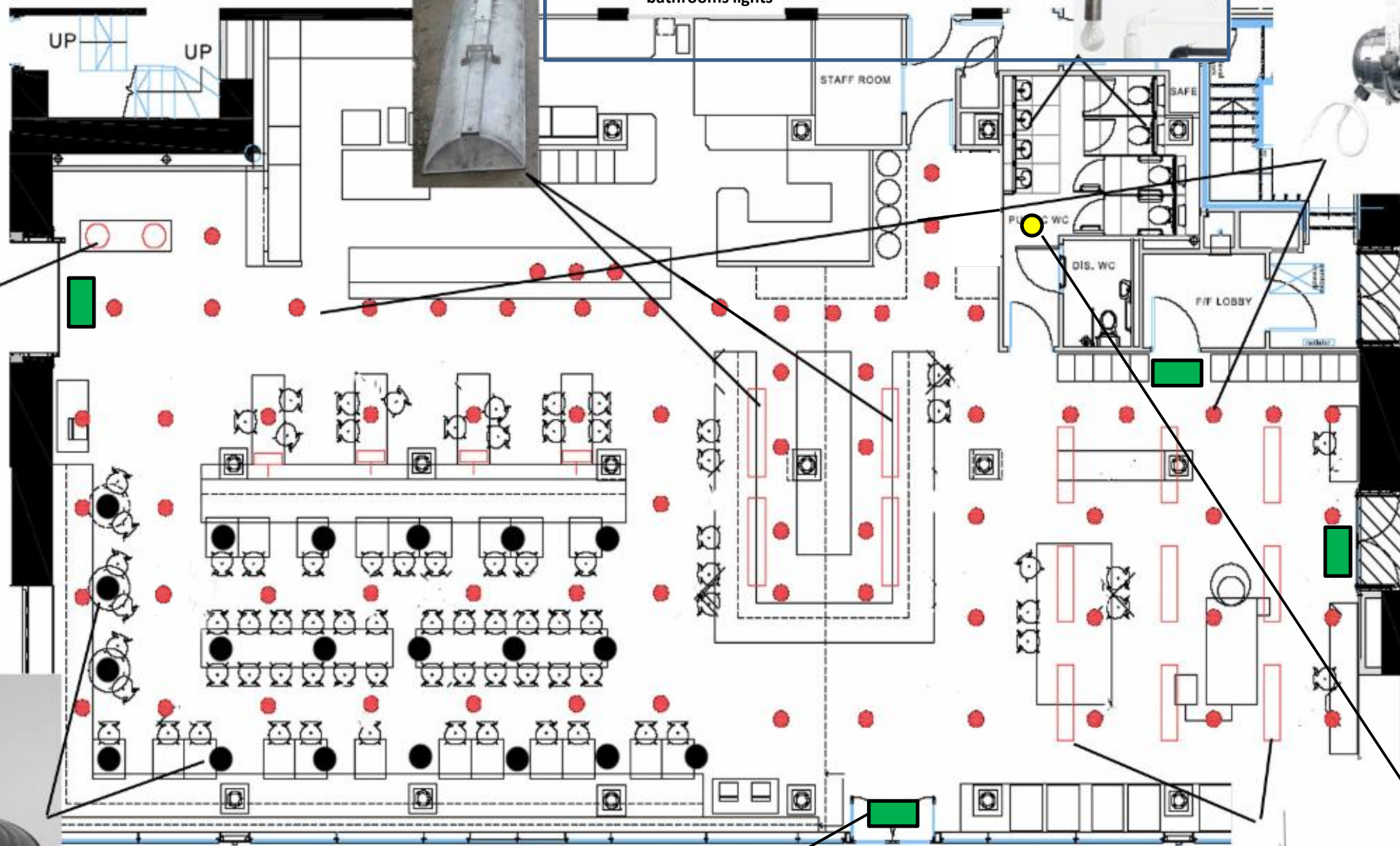
- Exit Signs**
- white aluminium trim finish



- Restaurant Lights**
- black & cream original 1930's air-force hanger shades
 - 410mm dia
 - E27 filament bulb
 - 2100mm drop from ceiling



- Reception Desk**
- Bespoke glass lights
- filament long bulb
 - 600mm(L) x 300(W)



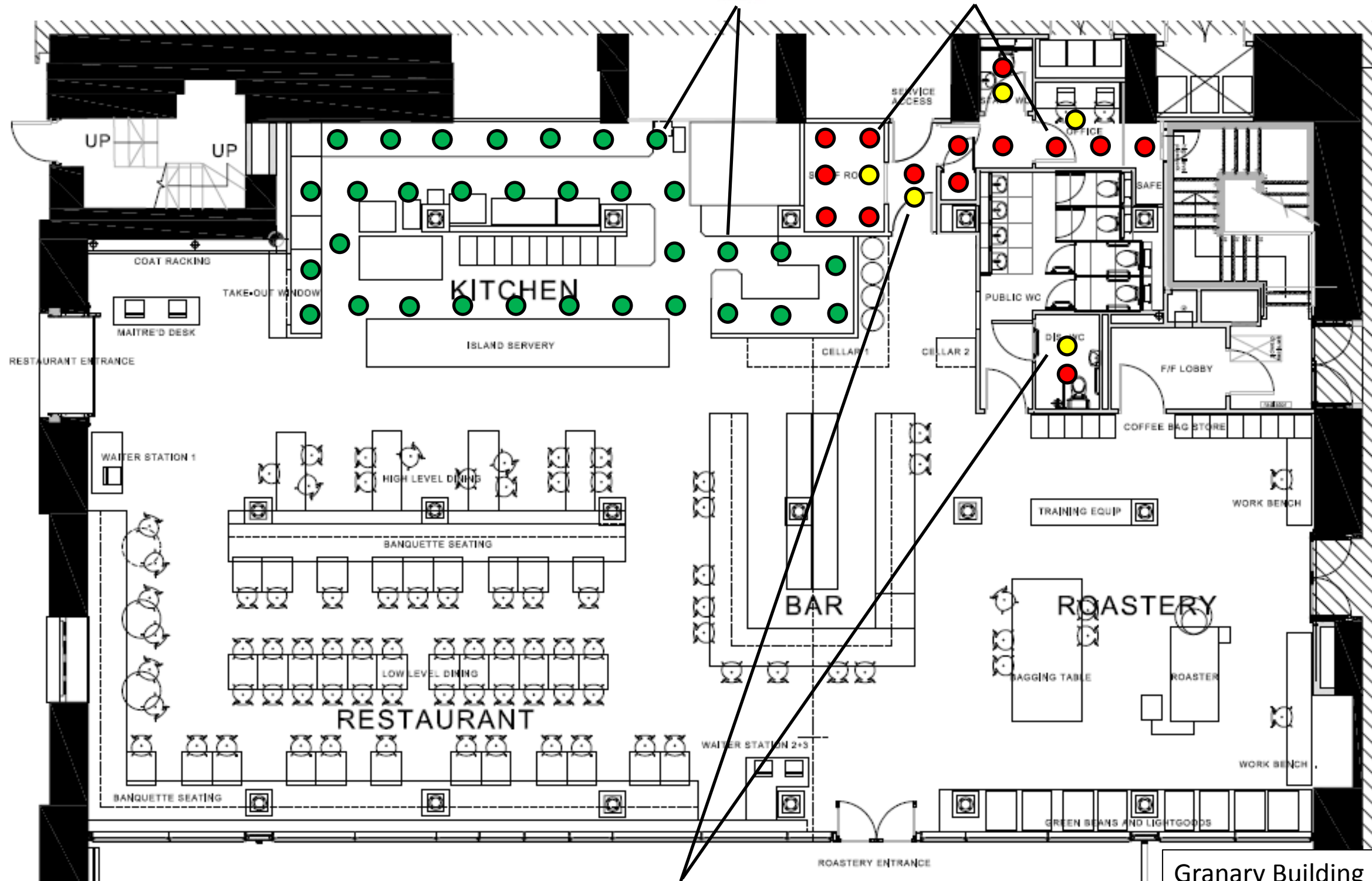
Granary Building Unit 2
Front of House Lighting
11th May 2012
(Not to scale)

NB. For kitchen, staff room and office lighting please refer to 'Back of House Lighting' drawing

- Kitchen**
- Ceiling recessed circular LED downlight (for wet environments)
 - 100mm dia



- Staff room, lobby and office**
- Ceiling recessed circular LED downlight
 - 100mm dia



PIR sensor

NB. For toilet and restaurant lighting please refer to 'Front of House Lighting' drawing

Granary Building Unit 2
Back of House Lighting
11th May 2012
(Not to scale)