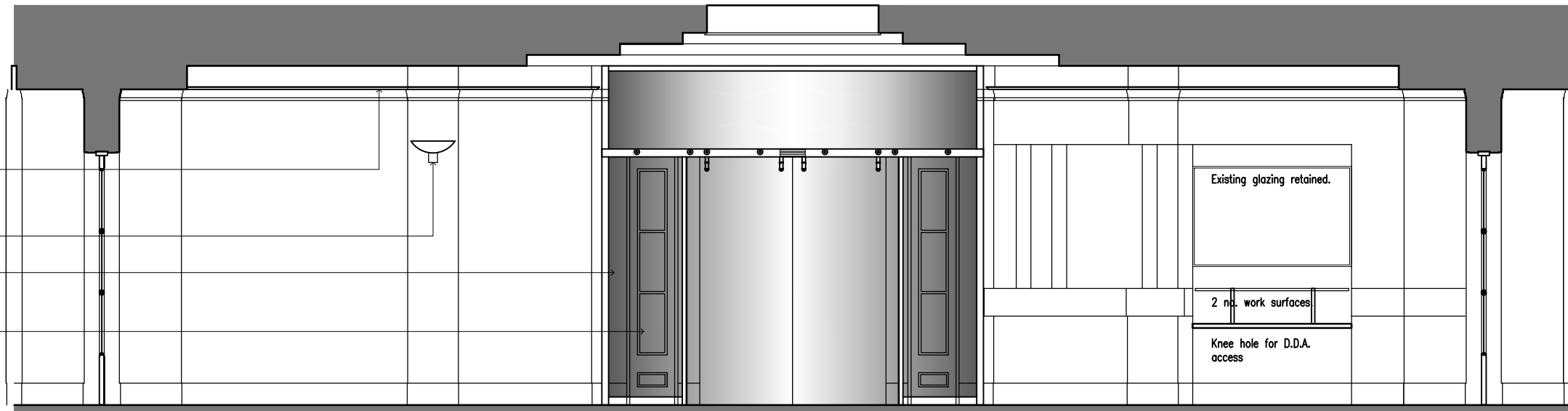


LED Linear light in flexible tubing run in bespoke with polyester power coated aluminium baffle fixed above the marble cornice.
Existing luminaires replaced with 6 no. compact fluorescent wall mounted uplighters.
Glass entrance lobby with automatic sliding doors.
Three gate glass leaf turnstiles with satin stainless steel pedestals.



INTERNAL ELEVATION 3

Service void above ceiling.

Line of existing plaster work false ceiling to be retained and redecorated with vinyl matt emulsion paint, colour white.

Existing plaster wall surface redecorated with vinyl matt emulsion paint, colour white.

LUMINAIRE TYPE L1 --- LINEARight Colormix Flex LED linear light in flexible strip size 4000 x 11.5 x 2.5 mm.

White polyester powder coated aluminium profile fixed through the plaster surface to masonry structure at 300 mm ctrs.

Reference to drawing no. 1115/CD/14 added.

Line of 75 mm high light brown marble cornice retained.

Cream marble wall cladding.

Section Through
Perimeter Lighting
scale 1:5

note

do not scale from this drawing
figured dimensions only are to be used

revisions

revision	date	item
A	12:11	Scale reduced to 1:50; annotation and dimensions added.
B	01:12	Luminaire references added.
C	02:12	Access control paddle turnstiles omitted; recessed entrance matting in the entrance lobby omitted, marble flooring retained and surface matting laid over, area of matting reduced; existing brass frame of mat well retained.
D	04:12	Warm air barrier indicated.
E	05:12	Reference to drawing no. 1115/CD/14 added.

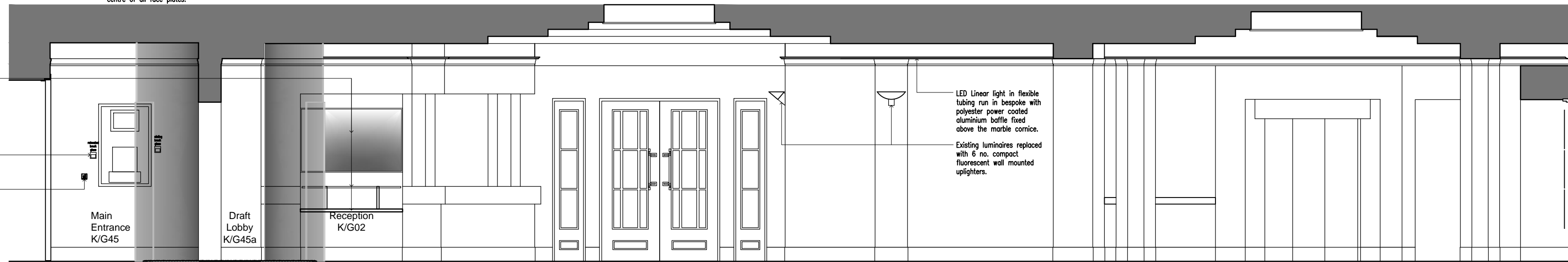
New reception desk work tops at 740 mm high with D.D.A. knee hole under and glass upper work top level to match the existing surface adjacent. Existing glass screen retained.

Existing fire alarm break glass activation button to be relocated.

Surface mounted morning entry key switch for GEZE outer doors only.

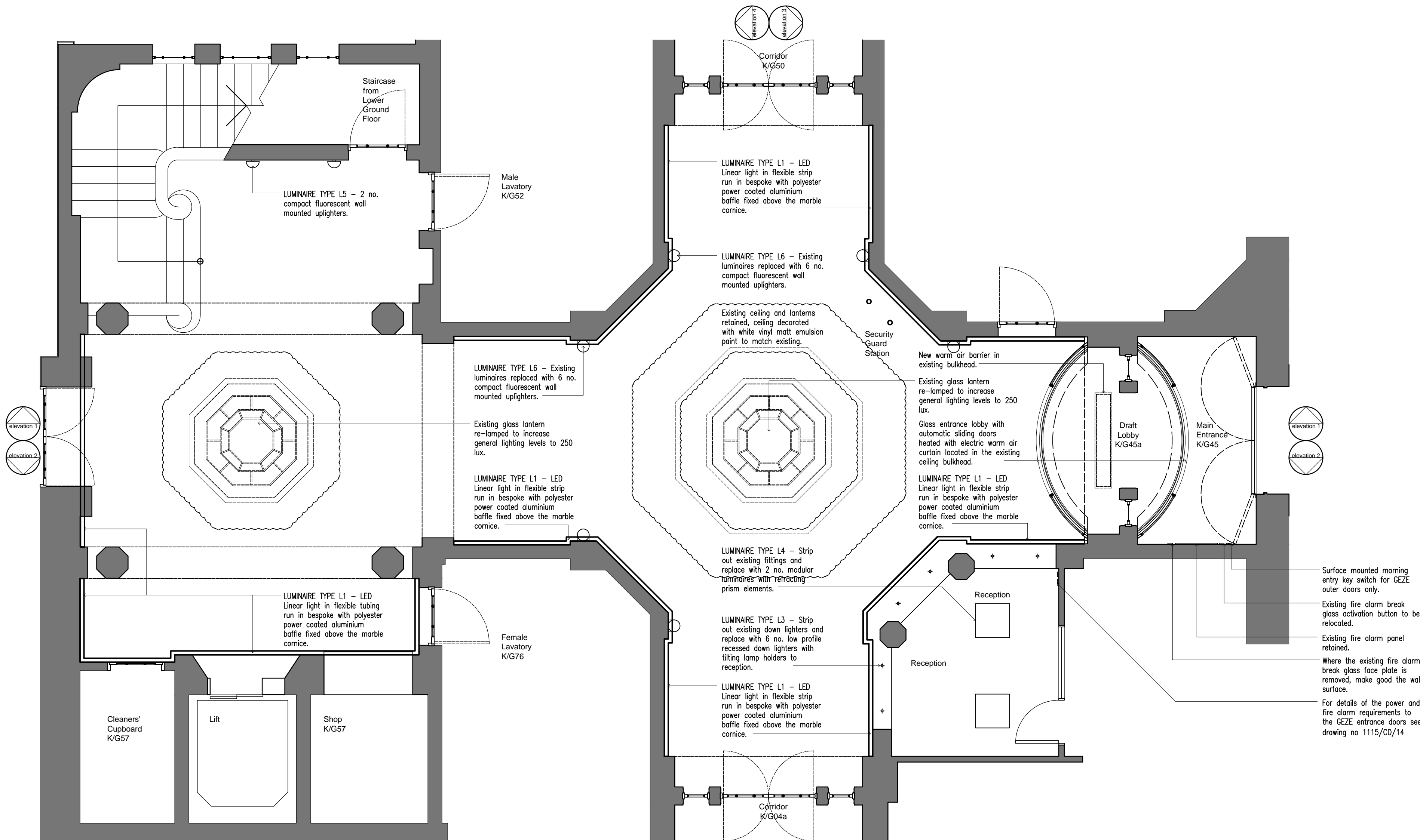
For details of the power and fire alarm requirements to the GEZE entrance doors see drawing no 1115/CD/14

75
125
Dimensions are to the centre of all face plates.



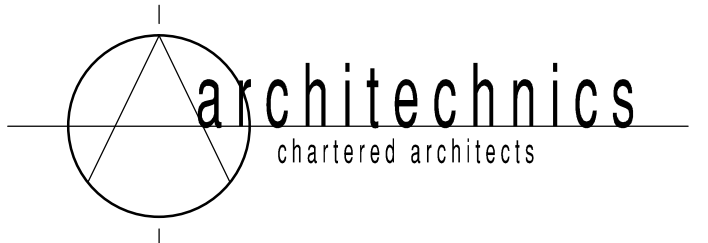
INTERNAL ELEVATION 2

LED Linear light in flexible tubing run in bespoke with polyester power coated aluminium baffle fixed above the marble cornice.
Existing luminaires replaced with 6 no. compact fluorescent wall mounted uplighters.



REFLECTED
GROUND
FLOOR
CEILING
PLAN

Surface mounted morning entry key switch for GEZE outer doors only.
Existing fire alarm break glass activation button to be relocated.
Existing fire alarm panel retained.
Where the existing fire alarm break glass face plate is removed, make good the wall surface.
For details of the power and fire alarm requirements to the GEZE entrance doors see drawing no 1115/CD/14



godstone studio, high street, godstone, surrey rh9 8dr
tel: 01883 744509 fax: 01883 744510
e-mail: info@architechnics.co.uk

client THE LONDON SCHOOL OF HYGIENE AND TROPICAL MEDICINE		
project REFURBISHMENT OF THE MAIN ENTRANCE		
location KEPPEL STREET, LONDON WC1E 7HT		
drawing PROPOSED REFLECTED CEILING PLAN INTERNAL SECTIONAL ELEVATIONS 2 AND 3	scale 1:50	revision
date 08:11	drawing no. 1115/CD/12	revision E