

This drawing is the copyright of Street Elte Associates Limited.

Do not scale from drawings. All dimensions and levels to be checked on site prior to commencement of work or manufacture of items. Notify SEA of any discrepancies.

This drawing to be read in conjunction with specifications, specialist drawings and any bill of quantities.

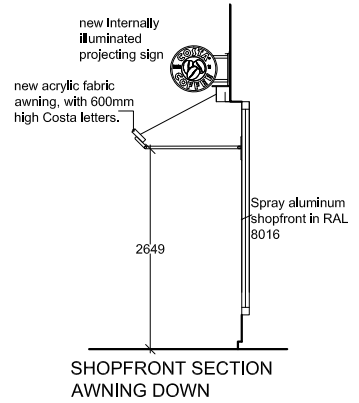
The Contractor is to comply with all relevant statutory legislation whether or not specifically stated on these drawings.



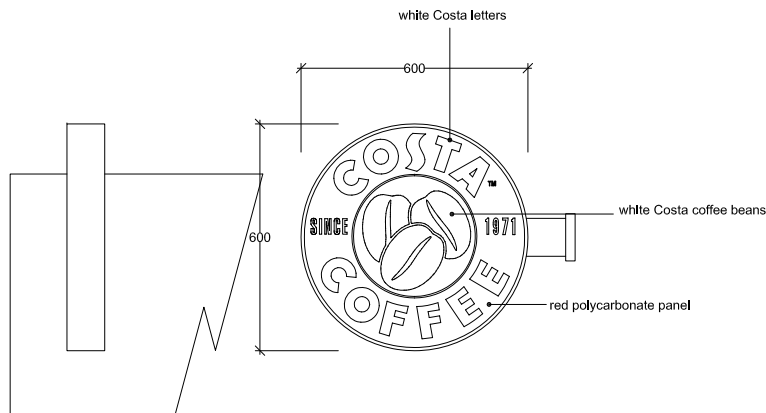
FRONT ELEVATION AWNINGS CLOSED SCALE 1:100



FRONT ELEVATION AWNINGS OPEN SCALE 1:100

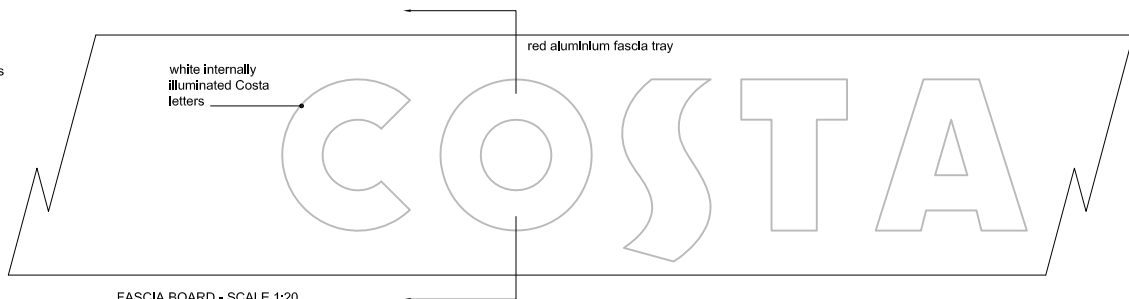


SHOPFRONT SECTION
AWNING DOWN



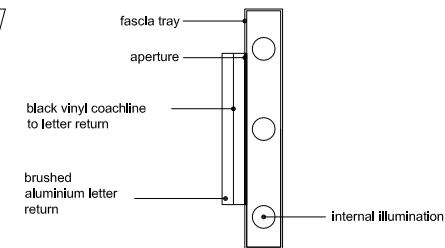
DOUBLE-SIDED 600MM DIA PROJECTING SIGN - 1:20

Screen printed polycarbonate panel fixed to a rim & return built up, mounted onto a sub-frame with de-scaled stainless steel beaded edge.
Stainless steel beans bonded to face, fixed using integral galvanised steel frame, finished in white with matching stainless steel cover plate for bracket.
Internal casing sprayed gloss white.
Internal fluorescent triphosphorous long life tubes for internal illumination with electronic starters



FASCIA BOARD - SCALE 1:20

3mm Aluminium tray fascia powder coated 'COSTA RED' with a 60mm return.
Built-up brushed stainless steel rim & return 'COSTA' letters.
200mm - 600mm in 50mm increments 'T' letter height available, depending on fascia.
All letter sizes to have a 10mm rim with a 60mm return.
Black vinyl coach line applied to centre of all letter returns.
Letters cut out of tray fascia background with letters fixed to aperture.
Internal HPF fluorescent illumination.
Inside aluminium tray finished white.
Opal perspex letter faces to illuminate



SECTION TROUGH FASCIA & LETTERING - SCALE 1:20

SEA DESIGN GROUP

Client	COSTA		
Project	257-259 Grays Inn Road London		
Drawing Title	External Elevations		
Scale	1:100/20 @ A3	Date	15.05.12
Drng No	211060/03	Rev	
Drng By	SA	Check	JS
Revisions By			

<input checked="" type="checkbox"/> UK Office Pinrose Drive, Kenilworth, Warwickshire, CV8 2FD UK	<input type="checkbox"/> UAE Office PO Box 214633, Dubai, UAE	Telephone +44 (0)1926 864440 Fax +44 (0)1926 864441 Email sea.uk@seadesigngroup.com	Telephone +971 (4) 324 5088 Fax +971 (4) 324 5087 Email sea.uae@seadesigngroup.com Website seadesigngroup.com
---	---	---	--