



**8.** Ground floor NE elevation windows  
(removed)



**9.** Ground floor rear vestibule  
Panels reused



**10.** Ground floor rear vestibule  
Panels reused



**11.** Landing 1 to rear staircase  
(removed)



**12.** Landing 1 to rear staircase  
(removed)



**13.** Ground floor NE elevation windows  
(removed)





**14.** First landing of rear staircase windows (retained)



**15.** Rear staircase (removed)



**16.** First floor rear vestibule Panels reused



**17.** First floor rear vestibule Panels reused



**18.** First floor front vestibule Panels reused



**19.** First floor front elevation window (retained)





**20.** First floor front elevation window  
(retained)



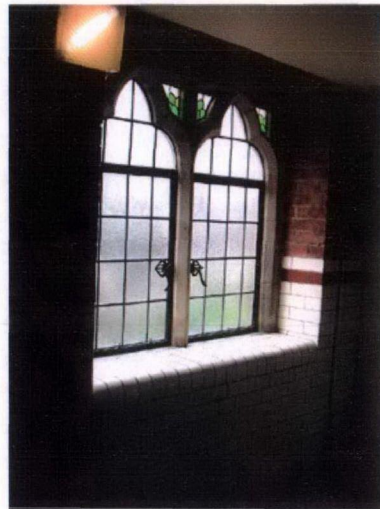
**21.** First floor front elevation window  
(retained)



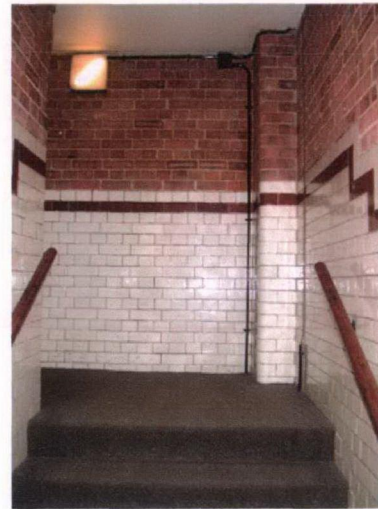
**22.** Timber boarding removed partially



**23.** Timber boarding removed partially



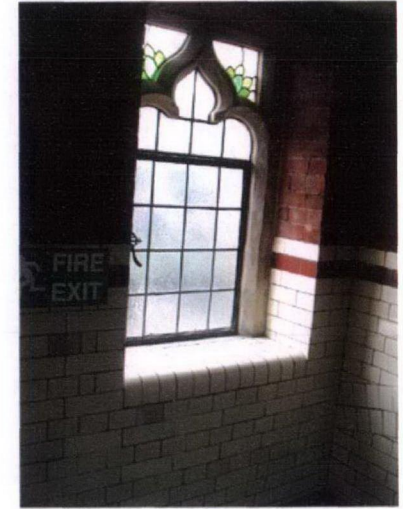
**24.** Landing 3 to front staircase window  
(retained)



**25.** Landing 4 to front staircase  
(removed)



**26.** Landing 4 to front staircase  
(removed)

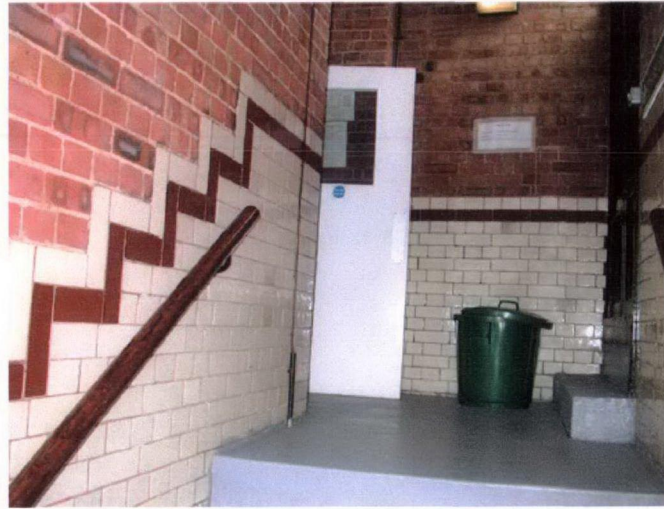


**27.** Landing 5 to front staircase window  
(retained)





**28.** Landing 6 to rear staircase  
(removed)



**29.** Landing 7 to rear staircase  
(removed)



**30.** Fireplace 1 reused



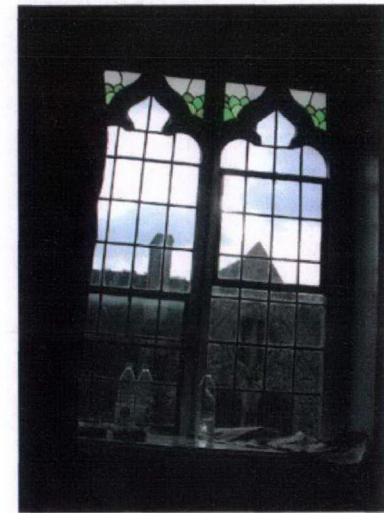
**31.** Fireplace 2 reused



**32.** Fireplace 3 reused



**33.** Fireplace 4 reused



**34.** Second floor front elevation window  
(retained)





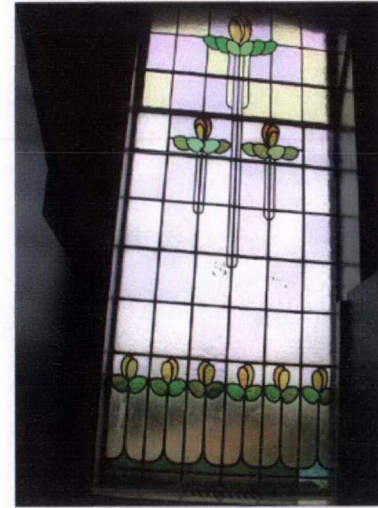
**35.** Second floor front elevation window (retained)



**36.** Fireplace 5 reused



**37.** Second floor NE elevation window to hall (retained)



**38.** Second floor NE elevation window to wc (retained)



**39.** Second floor NE elevation window to wc (retained)



**40.** Second floor NE elevation window to wc (retained)



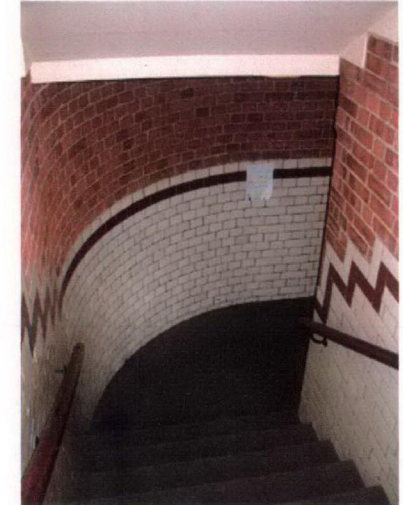
**41.** Second floor NE elevation window to wc (retained)



**42.** Landing 6 to front staircase (removed)



**43.** Landing 4 to front staircase (removed)



**44.** Landing 1 to front staircase (removed)