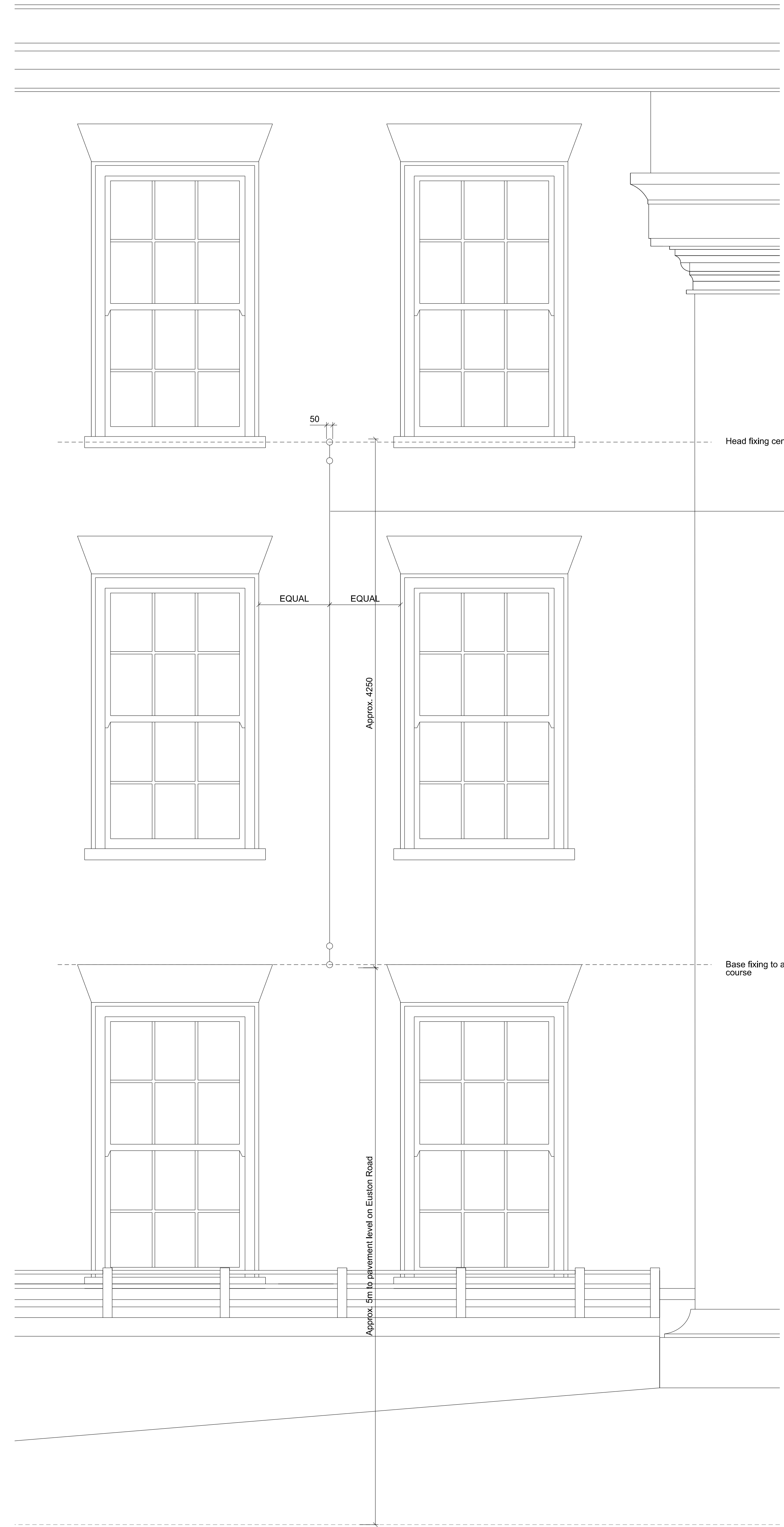
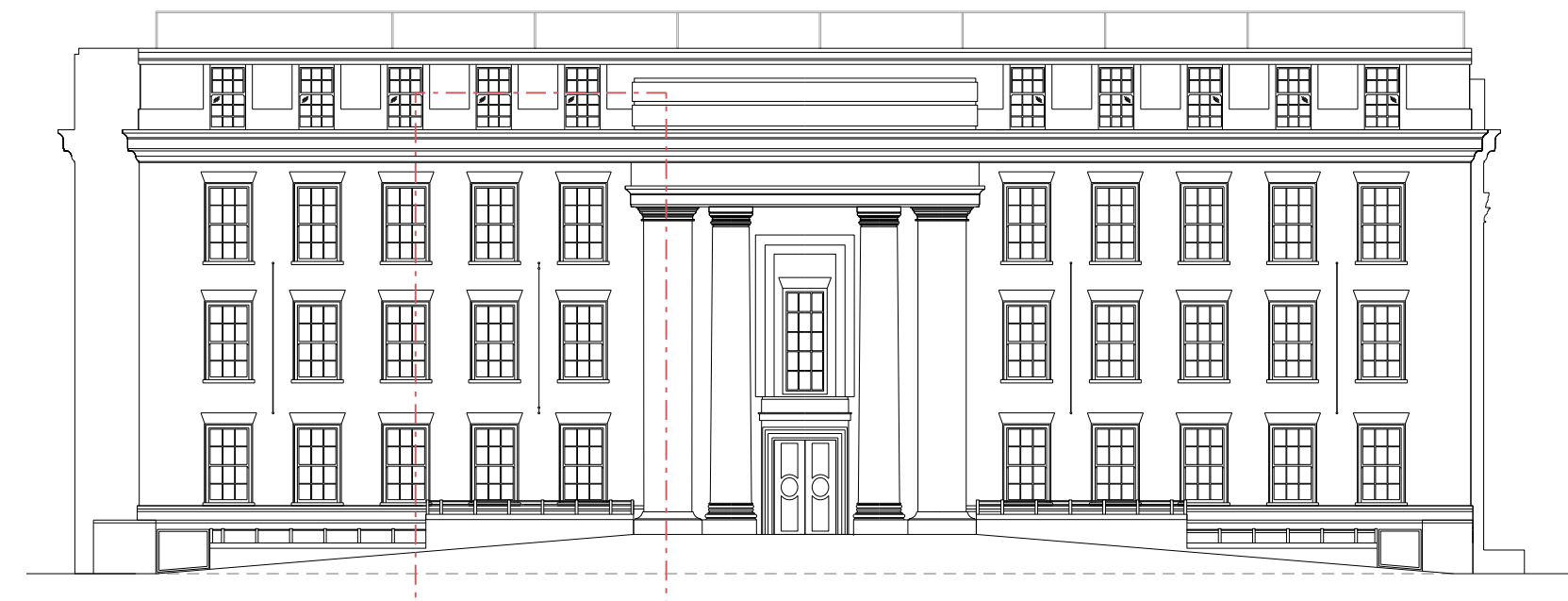


Notes  
Do not scale from this drawing.  
All dimensions are to be checked on site and any discrepancies noted in writing to the Project Manager.  
All dimensions are in millimeters unless noted otherwise.

Rev.	Date	Description	Drawn	Checked
-	09.05.12	Issued for Planning	JMP	JMP

East elevation Proposed



Typical banner elevation Proposed

Typical banner section Proposed

Head fixing centred on window cill

50mm diameter stainless steel head fixing welded to 150mm x 200mm fixing plate bolted to brickwork with proprietary cover plate to conceal fixings - all in accordance with manufacturer Signbox's detail

Proprietary stainless steel turnbuckle tensioning fixing by Signbox

Canvas banner, printed double sided with Quaker artwork, fixed at head and base in accordance with manufacturer Signbox's recommendations

EQUAL EQUAL

Approx. 4250

Base fixing to align with top of brick soldier course

Banner 'pocket' loops around concealed stability bar

50mm diameter stainless steel base fixing welded to 150mm x 200mm fixing plate bolted to brickwork with proprietary cover plate to conceal fixings - all in accordance with manufacturer Signbox's detail

Proprietary stainless steel turnbuckle tensioning fixing by Signbox

Approx. 5m to kerbside level on Euston Road

**JOHN MCISLON + PARTNERS**  
 7-9 Wilton Road  
 London NW1 3ER  
 T +44 (0)20 7313 8000  
 F +44 (0)20 7313 8001  
 www.mcislon.co.uk

Friends House, Euston  
 Detailed banner elevation and section  
 East elevation  
 Scale: As A3: 1:20 Job Number: 1371  
 Date: 08.05.12 Drawing: JMP  
 Drawing Status: Planning Application Checked: JMP  
 Drawing Number: 1371-F900-E-05-12 Revision: -