



New internally illuminated LED independently lit letters applied to rear face of glazing.
(refer to signage contractors details)

1800mm stainless steel door handle.
All door furniture to be brushed stainless steel

Frosted safety dots to inside of glazing

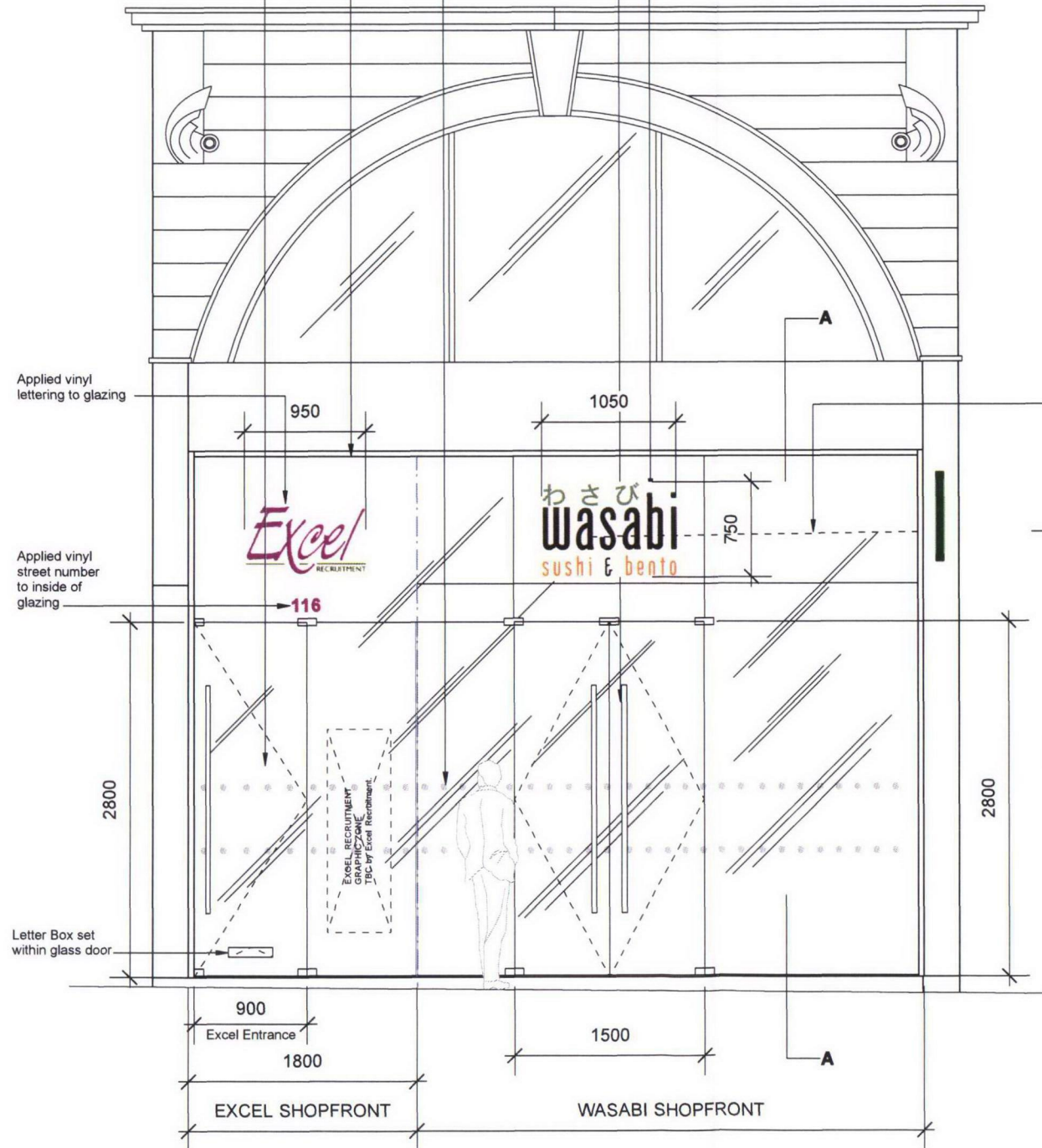
New shopfront glazing with matching silver framework

New frameless glazed door

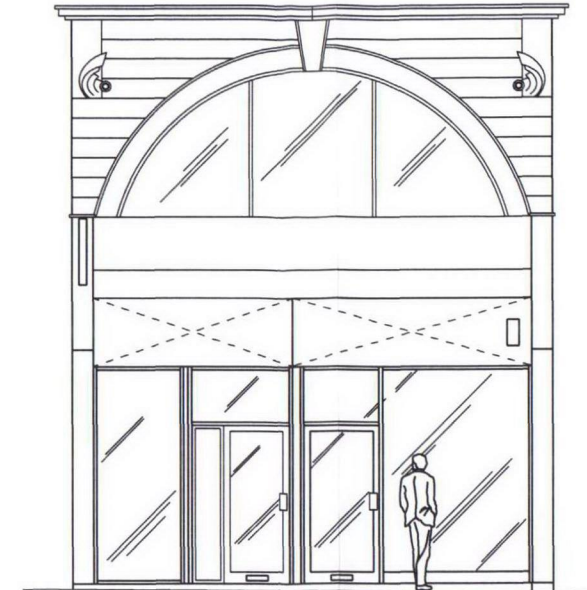
Applied vinyl lettering to glazing

Applied vinyl street number to inside of glazing

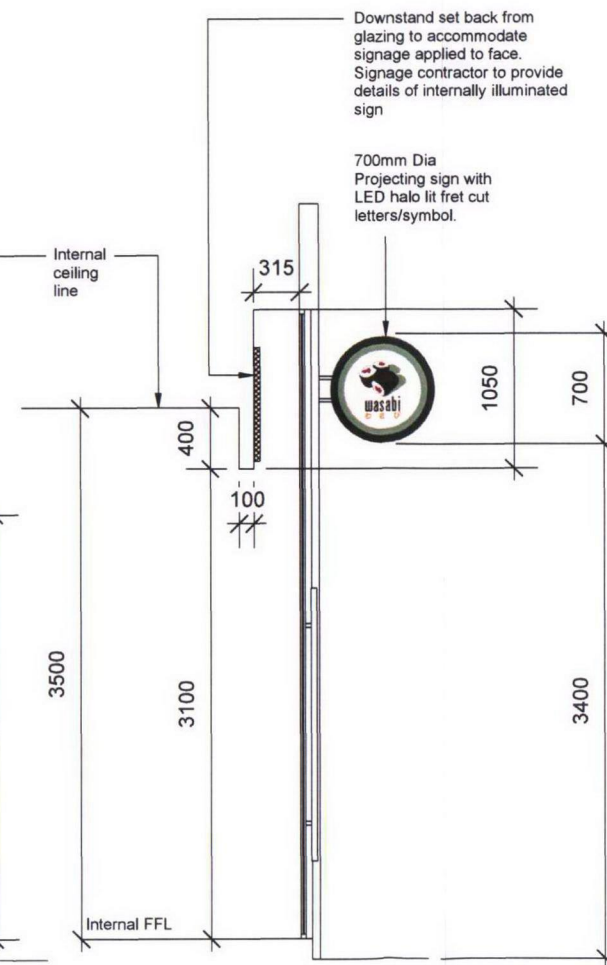
Letter Box set within glass door



Proposed Shopfront with double doors



Existing Shopfront 1:100 @ A3



Section AA

Rev N°	Description	Drawn by	Date
A	Excel entrance door reversed hung		26/03/12
B	Perimeter angled walls setting out		28/03/12
C	EXCEL ENTRANCE RECONFIGURATION		10/04/12
D	EXCEL SIGNAGE SPECIFICATION		18/04/12
E	INTERNAL SIGNAGE DOWNSTAND		19/04/12

Notes:

This drawing represents a performance guide upon which the contractor/subcontractor must base his/her working drawings & details. Include all necessary tolerances prior to manufacture and installation.

Contractors must undertake a full survey of the area to establish all dimensions & ensure accurate setting out.

Contractor to advise on suitability of all details shown to ensure structural stability, ease and economy of construction.

Refer to digital master artwork in regard to all graphic work shown.

All drawing information to be approved and formally issued to relevant parties by Wasabi Co Ltd.

Wasabi Co Ltd
Fusion House Suite 5
Rochester Mews
Camden
London
NW1 9JB
T: 0207 428 1550

Client
Wasabi

Project
Holborn Station

Description
Proposed Shopfront

FINAL

Scale
1:50 @ A3

Drawn by
SA

Drawing N°
WAS/012-600

Date
19/04/12

Revision
E

This drawing is the copyright of Wasabi Ltd. This drawing cannot be copied, reproduced, retained or disclosed to any unauthorised person without prior permission in writing from Wasabi Ltd.