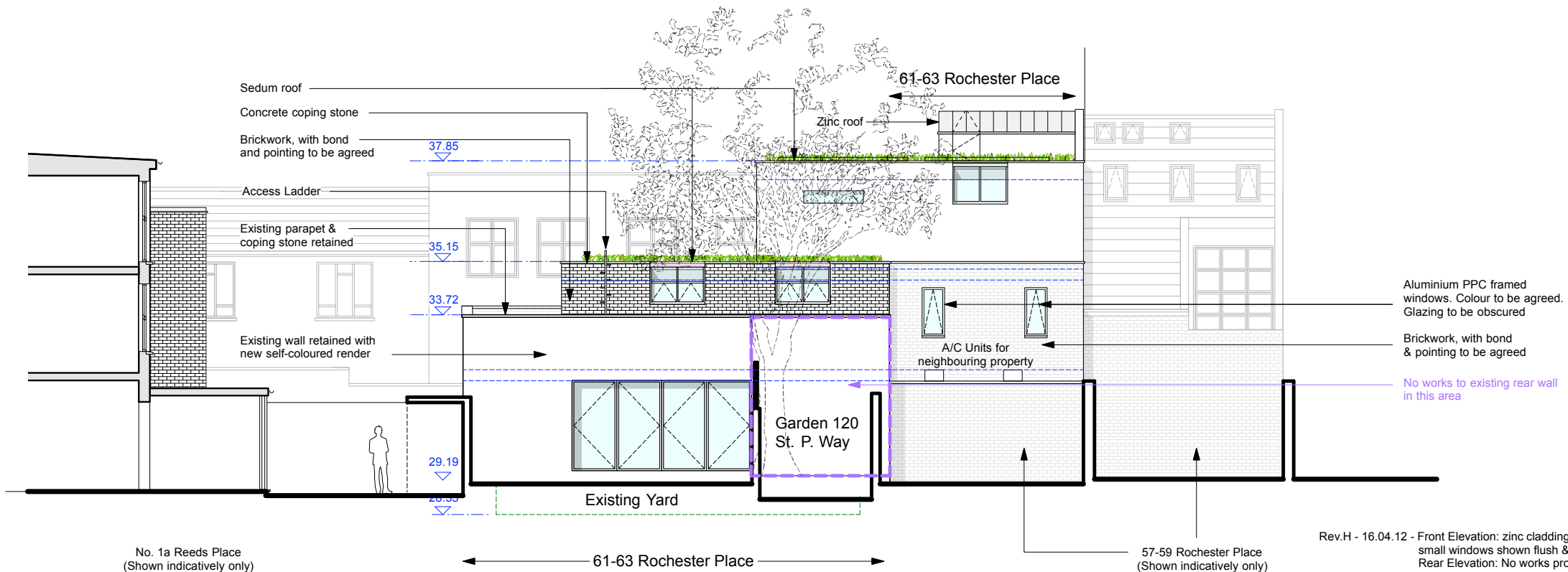


Front Elevation - North East



Rear Elevation - South West

Rev.H - 16.04.12 - Front Elevation: zinc cladding changed to brickwork & small windows shown flush & frameless. Large bay updated
Rear Elevation: No works proposed at garden of 120 SP Way
Etched glass to rear windows and wrap around window shown.
Vents shown for Mech ventilation.

Rev.F - 01.02.12 - Planning Submission Drawing
Rev.E - 23.01.12 - Draft Planning
Rev.D - 12.01.12 - Updates to suit Resident's Meeting
Rev.C - 21.10.11 - Updates as per Planning Consultation (10.10.11)
Rev.B - 30.09.11 - Finishes updated & levels checked
Rev.A - 30.08.11 - Rear Elevation added

Scale 0 1m 2m 5m 8m

Norton Ellis Architects Ltd
14 Baltic Street East
London EC1Y 0UJ
Tel: 020 7490 3142
Fax: 056 0209 3407
www.nortonellis.co.uk
mail@nortonellis.co.uk

These particulars do not constitute, nor constitute any part of, an offer or a contract. All statements contained in these particulars as to this property are made without the responsibility on the part of Norton Ellis Architects Ltd, or the Vendors or Lessors. None of the statements contained in these particulars as to this property are to be relied on as statements or representations of fact. All measurements are approximate and no responsibility is taken for any error, omission, or mis-statement and any intending purchaser or tenants must satisfy themselves by inspection or otherwise as to the correctness of each of the statements contained in these particulars/ plans.

Do not scale from this drawing. All dimensions to be checked on site and any discrepancy to be reported to the Architect prior to construction.
This drawing to be read in conjunction with all other drawings including those of other consultants.
Samples of all materials to be provided for comment/ approval prior to fabrication/construction

© 2011 Norton Ellis Architects Ltd.

Proposed Front & Rear Elevations

PURPOSE OF ISSUE
Preliminary ☐
Planning ☒
Tender ☐
Construction ☐

235-013
Rev: H
Date: 02.08.11
Scale: 1:100 @ A2

norton ellis architects nea

61-63 Rochester Place, NW1 9JU

Proposed Front & Rear Elevations